

SALES REPORT: IVECO (MOTORI) NEF67TE#KIVEO - SN 1536948 - Year 2018

This Report is a summary about observations came out from technical inspection done by our specialised technician.

GENERAL CONDITIONS

MACHINE DATA

Model: NEF67TE#KIVEO

Family: POWER SYSTEM

Serial Number: 1536948

Order Number MU/MM: EU00819188

Construction year: 2018

Hour meter: 399

General residual conditions Truck/Tyres: %

Machine main application: Basic application

Location: Stock CASERTA

Rating: ★★☆☆☆

Public price: Ask

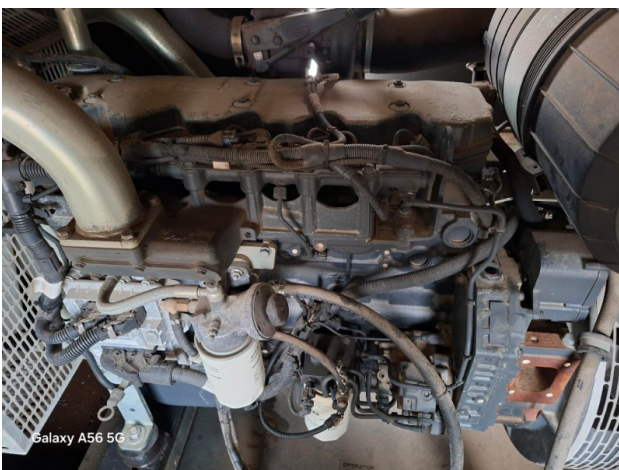
MACHINE CONFIGURATION

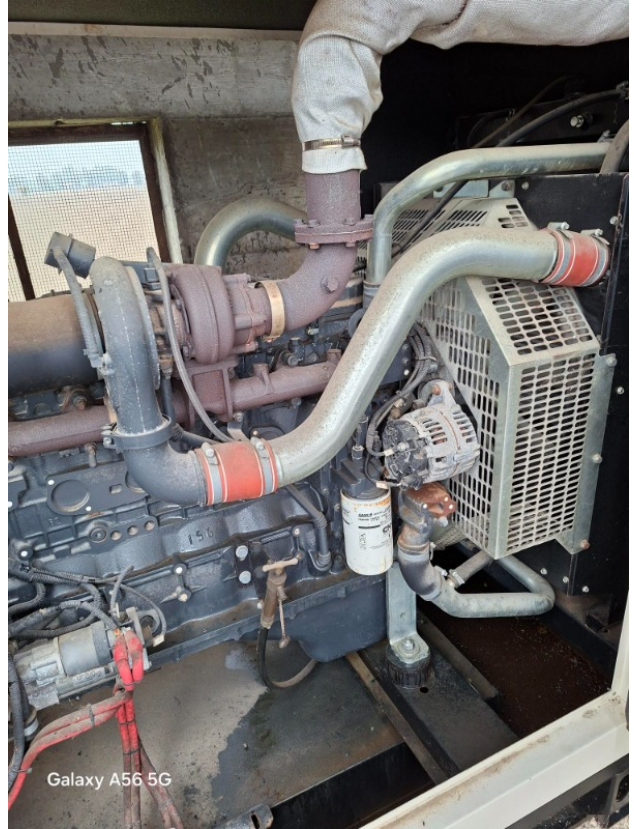
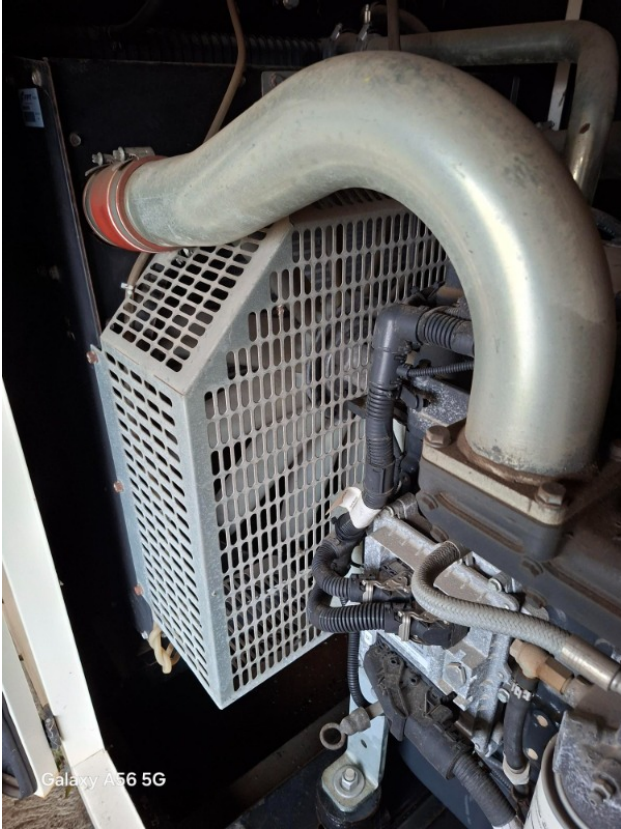
● Machine type Mass Excavator ● ● Boom type ● Stick check valves ● Boom check valves ● Truck type undefined ● kW 193 kVA 200 - kW 160 kVA 220 - kW 176 ● 1950 Kg ● CE Mark ● CE Certificate ● Use and maintenance manual

MACHINE PHOTOS

◆ Il contaore è:

Funzionante







GENERAL APPEARANCE

- ◆ Painting Conditions Very Good

- ◆ Frame/Bumper conditions: Very Good

- ◆ Door conditions (right): Very good

- ◆ Condizione Cablaggi: Molto Buono

Functionality

Engine & electrical system functionality

- ◆ In quale stato è stata visionata la macchina: Spenta e ferma

- ◆ Engine working conditions: Very good

◆ Engine with oil leaks:	No
◆ Oil-Water presence:	No
◆ Engine present smokiness:	No
◆ Radiator conditions:	Very good
◆ Hydraulic pump conditions:	Good
◆ Starter motor conditions:	Very good
◆ Door conditions (left):	Very good
◆ Spar conditions (left):	Very good
◆ Batteries/Cables conditions:	Very good
◆ Presence of electrical fault:	Not present

GENERATORE

◆ Condizioni alternatore:	Molto Buono
◆ Condizioni magneto termico di controllo:	Molto Buono
◆ Condizioni Cablaggi	Buono

Functionality drive and rotation

◆ Final drives conditions:	Good
◆ Hydraulic joint conditions:	Good
◆ Engine presents blowby:	Buono

Check 81/2008

◆ Cameras conditions:	Excellent - no needs repair
◆ Safety belt conditions:	Not present/Broken
◆ Controls been modified:	No
◆ Are Tools Functional & Visible with tag:	Yes
◆ Canopy completed and comes with keys and bolt:	Yes
◆ All Pipes with no damage e/o scratches:	Yes
◆ Batteries box shielded:	Yes
◆ Boardwalk presence:	Present and functioning

Valutazione Macchina

★ Non Funzionante (NF)

La macchina si presenta non funzionante e/o in pessime condizioni. Macchina da demolire o venduta per parti di ricambio. La macchina NON è in sicurezza.

★★ Scarso (S)

La macchina è in cattivo stato e può presentare visibili rotture e/o crepe su tutta la struttura. Per il suo ottimale funzionamento, o per essere avviata, può necessitare di importanti riparazioni a carro/gomme, perdite d'olio, riverniciatura completa, componenti principali, messa in sicurezza.

★★★ Buono (B)

La macchina si presenta in buone condizioni sia estetiche che di funzionamento. Carro/Gomme hanno orientativamente un 30/40% di vita residua. La macchina non presenta importanti rotture e/o perdite d'olio. La macchina è pronta per lavorare "AS IS" anche se potrebbe richiedere piccoli interventi di riparazione/migliorie. La macchina è in sicurezza.

★★★★ Molto Buono (O)

La macchina si presenta in condizioni molto buone, non ha più di 5 anni e/o 5000 ore lavorate. Non presenta problemi strutturali e può essere preparata esteticamente per renderla "quasi nuova". Componenti principali non inferiori al 50/60% di vita residua, macchina in sicurezza.

★★★★★ Eccellente (E)

La macchina si presenta in condizioni eccellenti, prossime al nuovo. Componenti principali non inferiori al 70/80% di vita residua, macchina in sicurezza.

Machine Rating

★ Not Working (NW)

Machine not operational or in really bad conditions. Machine has to be demolished or sold as a "parts". Machine not in security conditions.

★★ Poor (P)

Machine in bad condition, got visible cracks or repairable structural issues. Machine is operational but, in order to work properly, it may need significant repairs to tyres/truck, paint, pins and/or bushings, power train, hydraulic system.

★★★ Good (G)

Machine is in good condition and operational, with no structural issues. Tyres/Track around 30/40% of residual life. No relevant hydraulic leaks, pins/bushings with normal wear, frame may need to be repainted. Machine is ready to work "AS IS", it may need minor repairs for a better performance. Machine in security conditions or easy to be in safety condition.

★★★★ Very Good (VG)

Machine is in very good conditions, with no more of 5 years and/or 5000 working hours. No structural issues; painting condition is almost perfect. May need an easy check to be sold as "Brand New". Main components with 50/60% of life residue. Machine in security conditions.

★★★★★ Excellent (E)

Machine is in excellent condition, comparable to a new one. Main components-with 70/80% of life residue. Machine in security conditions.