

SALES REPORT: CATERPILLAR 315 NG - SN WKX10552 - Year 2021

This Report is a summary about observations came out from technical inspection done by our specialised technician.

GENERAL CONDITIONS

MACHINE DATA

Model: 315 NG

Family: SMALL EXCAVATOR

Serial Number: WKX10552

Order Number MU/MM: MM00521988

Construction year: 2021

Hour meter: 656

General residual conditions Truck/Tyres: 60 %

Machine main application: Basic application

Location: MILANO branch

Rating: ★★☆☆☆

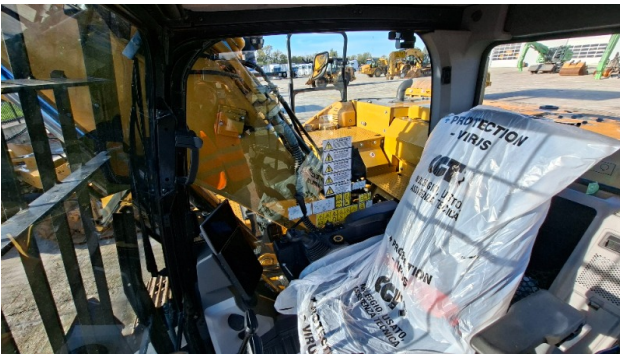
Public price: 285.000 €

MACHINE CONFIGURATION

● Machine type Demolition ● Boom type Mono boom ● Plant features Versatility ● Quick coupler Hydraulic ● Bucket Standard ● Truck type Fixed ● Blade ● General Truck Residual 60% ● Cabin type Fixed standard ● Cabin fog Front superiore ● Air Conditioning system ● Product Link ● 15000 Kg ● CE Mark ● CE Certificate ● MPKXL03.6FX1-030 EPA ● Use and maintenance manual

MACHINE PHOTOS





GENERAL APPEARANCE

◆ Painting Conditions

Very Good

◆ Counterweight conditions:

Very good

◆ Frame/Bumper conditions: Very Good

TRUCK

◆ Sprockets residual: 60

◆ Front idler wheel residual: 60

◆ Rollers upper/bottom residual: 60

◆ Chains residual: 60

Right side

◆ Door conditions (right): Very good

◆ Spar conditions: Very good

Left side

◆ Door conditions (left): Very good

◆ Door conditions (left): Very good

◆ Spar conditions (left): Very good

◆ Hood/Armor bottom conditions: Present and intact

Functionality

Engine & electrical system functionality

◆ In quale stato è stata visionata la macchina: Accesa e funzionante "al lavoro"

◆ Engine working conditions:	Very good
◆ Engine with oil leaks:	No
◆ Engine presents blowby:	No
◆ Oil-Water presence:	No
◆ Engine present smokiness:	No
◆ Radiator conditions:	Very good
◆ Starter motor conditions:	Very good
◆ Batteries/Cables conditions:	Very good
◆ Presence of electrical fault:	No

Functionality drive and rotation

◆ Hydraulic pump conditions:	Very good
◆ Engine rotation conditions:	Very good
◆ Engine travel conditions:	Very good
◆ Final drives conditions:	Very good
◆ Hydraulic joint conditions:	Very good
	Presence of leaks : No
◆ Hydraulic joint conditions:	Very good
	Presence of leaks : No

Linkage Group

◆ Hydraulic conditions linkage group:	No
---------------------------------------	----

◆ Boom structure:	Very good
	Presence of welding/cracks : No
◆ Stick structure:	Very good
	Presence of welding/cracks : No
◆ Flexible pipes conditions:	Very good
◆ Boom cylinders conditions:	Very good
	Leaks : No
◆ Stick cylinder conditions:	Very good
	Leaks : No
◆ Bucket cylinder conditions:	Very good
	Leaks : No
◆ Pins & Bushings boom conditions:	Very good
◆ Pins & Bushings stick conditions:	Very good
◆ Pins & Bushings bucket conditions:	Very good
◆ Bucket & Get conditions:	Very good
◆ Quick Coupler conditions:	Very good
◆ Auto Lube working conditions:	No

Cabin and Tools

◆ Conditions internal cabin:	Very good
◆ Flashing presents issues:	Yes
◆ Lights & Windshield present issues:	Presents and functioning
◆ Air conditioning is working:	Presente e funzionante

◆ Back & side camera conditions: Present and functioning

Check 81/2008

◆ Glass conditions: Excellent - no needs repair

◆ Lights conditions: Excellent - no needs repair

◆ Rear view mirrors conditions: Excellent - no needs repair

◆ Stepladders & handrails conditions: Very good

◆ Cameras conditions: Excellent - no needs repair

◆ Flashing conditions: Present and functioning

◆ Safety belt conditions: Present and valid

◆ Controls been modified: No

◆ Presence of Exclusion Control Lever: Yes

◆ Are Tools Functional & Visible with tag: Yes

◆ Canopy completed and comes with keys and bolt: Yes

◆ All Pipes with no damage e/o scratches: Yes

◆ Batteries box shielded: Yes

◆ Acoustic alarm works properly: Yes

◆ Boardwalk presence: Present and functioning

Valutazione Macchina

★ Non Funzionante (NF)

La macchina si presenta non funzionante e/o in pessime condizioni. Macchina da demolire o venduta per parti di ricambio. La macchina NON è in sicurezza.

★★ Scarso (S)

La macchina è in cattivo stato e può presentare visibili rotture e/o crepe su tutta la struttura. Per il suo ottimale funzionamento, o per essere avviata, può necessitare di importanti riparazioni a carro/gomme, perdite d'olio, riverniciatura completa, componenti principali, messa in sicurezza.

★★★ Buono (B)

La macchina si presenta in buone condizioni sia estetiche che di funzionamento. Carro/Gomme hanno orientativamente un 30/40% di vita residua. La macchina non presenta importanti rotture e/o perdite d'olio. La macchina è pronta per lavorare "AS IS" anche se potrebbe richiedere piccoli interventi di riparazione/migliorie. La macchina è in sicurezza.

★★★★ Molto Buono (O)

La macchina si presenta in condizioni molto buone, non ha più di 5 anni e/o 5000 ore lavorate. Non presenta problemi strutturali e può essere preparata esteticamente per renderla "quasi nuova". Componenti principali non inferiori al 50/60% di vita residua, macchina in sicurezza.

★★★★★ Eccellente (E)

La macchina si presenta in condizioni eccellenti, prossime al nuovo. Componenti principali non inferiori al 70/80% di vita residua, macchina in sicurezza.

Machine Rating

★ Not Working (NW)

Machine not operational or in really bad conditions. Machine has to be demolished or sold as a "parts". Machine not in security conditions.

★★ Poor (P)

Machine in bad condition, got visible cracks or repairable structural issues. Machine is operational but, in order to work properly, it may need significant repairs to tyres/truck, paint, pins and/or bushings, power train, hydraulic system.

★★★ Good (G)

Machine is in good condition and operational, with no structural issues. Tyres/Track around 30/40% of residual life. No relevant hydraulic leaks, pins/bushings with normal wear, frame may need to be repainted. Machine is ready to work "AS IS", it may need minor repairs for a better performance. Machine in security conditions or easy to be in safety condition.

★★★★ Very Good (VG)

Machine is in very good conditions, with no more of 5 years and/or 5000 working hours. No structural issues; painting condition is almost perfect. May need an easy check to be sold as "Brand New". Main components with 50/60% of life residue. Machine in security conditions.

★★★★★ Excellent (E)

Machine is in excellent condition, comparable to a new one. Main components-with 70/80% of life residue. Machine in security conditions.