

## SALES REPORT: CATERPILLAR 330 NG - SN XNB20110 - Year 2022

This Report is a summary about observations came out from technical inspection done by our specialised technician.

### GENERAL CONDITIONS

---

#### MACHINE DATA

---

**Model:** 330 NG

**Family:** MEDIUM EXCAVATOR

**Serial Number:** XNB20110

**Order Number MU/MM:** MM00576904

**Construction year:** 2022

**Hour meter:** 3648

**General residual conditions Truck/Tyres:** 60 %

**Machine main application:** Basic application

**Location:** Out for hire

**Rating:** ★★☆☆☆

**Public price:** 240.000 €

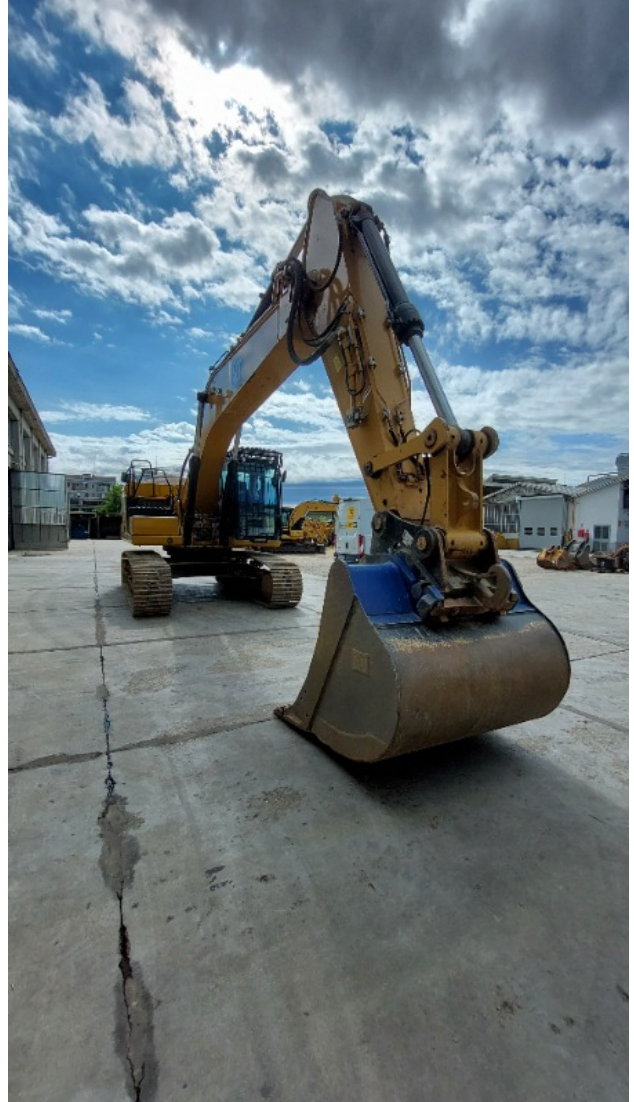
#### MACHINE CONFIGURATION

---

• Machine type Standard • Boom type Mono boom • Boom check valves • Stick check valves • Plant features Versatility • Quick coupler Hydraulic • Bucket Standard • Truck type Fixed • General Truck Residual 60% • Cabin type Fixed standard • Cabin fog Front superiore • Air Conditioning system • Product Link • 19000 Kg • CE Mark • CE Certificate • NPKXL07.0VM1-013 EPA

## MACHINE PHOTOS

---







◆ Painting Conditions Good

---

◆ Counterweight conditions: Good

---

◆ Frame/Bumper conditions: Good

---

## TRUCK

---

◆ Sprockets residual: 60

---

◆ Front idler wheel residual: 60

---

◆ Rollers upper/bottom residual: 60

---

◆ Chains residual: 60

---

## Right side

---

◆ Door conditions (right): Good

---

◆ Spar conditions: Good

---

## Left side

---

◆ Door conditions (left): Good

---

◆ Door conditions (left): Good

---

◆ Spar conditions (left): Good

---

◆ Other notes

---

◆ Hood/Armor bottom conditions: Present and intact

---

## Functionality

---

### Engine & electrical system functionality

---

◆ In quale stato è stata visionata la macchina:	Accesa e funzionante "al lavoro"
◆ Engine working conditions:	Good
◆ Engine with oil leaks:	No
◆ Engine presents blowby:	No
◆ Oil-Water presence:	No
◆ Engine present smokiness:	No
◆ Radiator conditions:	Good
◆ Starter motor conditions:	Good
◆ Batteries/Cables conditions:	Good
◆ Presence of electrical fault:	No

### Functionality drive and rotation

---

◆ Hydraulic pump conditions:	Good
◆ Engine rotation conditions:	Good
◆ Engine travel conditions:	Good
◆ Final drives conditions:	Good
◆ Hydraulic joint conditions:	Good

Presence of leaks : No

---

◆ Hydraulic joint conditions:	Good
	Presence of leaks : No

---

### Linkage Group

---

◆ Hydraulic conditions linkage group:	No
---------------------------------------	----

---

◆ Boom structure:	Good
	Presence of welding/cracks : No

---

◆ Stick structure:	Good
	Presence of welding/cracks : No

---

◆ Flexible pipes conditions:	Good
------------------------------	------

---

◆ Boom cylinders conditions:	Good
	Leaks : No

---

◆ Stick cylinder conditions:	Good
	Leaks : No

---

◆ Bucket cylinder conditions:	Good
	Leaks : No

---

◆ Pins & Bushings boom conditions:	Good
------------------------------------	------

---

◆ Pins & Bushings stick conditions:	Good
-------------------------------------	------

---

◆ Pins & Bushings bucket conditions:	Good
--------------------------------------	------

---

◆ Bucket & Get conditions:	Good
----------------------------	------

---

◆ Quick Coupler conditions:	Good
-----------------------------	------

---

◆ Auto Lube working conditions:	No
---------------------------------	----

---

### Cabin and Tools

---

◆ Conditions internal cabin:	Good
◆ Flashing presents issues:	Yes
◆ Lights & Windshield present issues:	Presents and functioning
◆ Air conditioning is working:	Presente e funzionante
◆ Back & side camera conditions:	Present and functioning

### Check 81/2008

◆ Glass conditions:	Excellent - no needs repair
◆ Lights conditions:	Excellent - no needs repair
◆ Rear view mirrors conditions:	Excellent - no needs repair
◆ Stepladders & handrails conditions:	Very good
◆ Cameras conditions:	Excellent - no needs repair
◆ Flashing conditions:	Present and functioning
◆ Safety belt conditions:	Present and valid
◆ Controls been modified:	No
◆ Presence of Exclusion Control Lever:	Yes
◆ Are Tools Functional & Visible with tag:	Yes
◆ Canopy completed and comes with keys and bolt:	Yes
◆ All Pipes with no damage e/o scratches:	Yes
◆ Batteries box shielded:	Yes

◆ Acoustic alarm works properly: Yes

---

◆ Boardwalk presence: Present and functioning

---

## Valutazione Macchina

### ★ Non Funzionante (NF)

La macchina si presenta non funzionante e/o in pessime condizioni. Macchina da demolire o venduta per parti di ricambio. La macchina NON è in sicurezza.

### ★★ Scarso (S)

La macchina è in cattivo stato e può presentare visibili rotture e/o crepe su tutta la struttura. Per il suo ottimale funzionamento, o per essere avviata, può necessitare di importanti riparazioni a carro/gomme, perdite d'olio, riverniciatura completa, componenti principali, messa in sicurezza.

### ★★★ Buono (B)

La macchina si presenta in buone condizioni sia estetiche che di funzionamento. Carro/Gomme hanno orientativamente un 30/40% di vita residua. La macchina non presenta importanti rotture e/o perdite d'olio. La macchina è pronta per lavorare "AS IS" anche se potrebbe richiedere piccoli interventi di riparazione/migliorie. La macchina è in sicurezza.

### ★★★★ Molto Buono (O)

La macchina si presenta in condizioni molto buone, non ha più di 5 anni e/o 5000 ore lavorate. Non presenta problemi strutturali e può essere preparata esteticamente per renderla "quasi nuova". Componenti principali non inferiori al 50/60% di vita residua, macchina in sicurezza.

### ★★★★★ Eccellente (E)

La macchina si presenta in condizioni eccellenti, prossime al nuovo. Componenti principali non inferiori al 70/80% di vita residua, macchina in sicurezza.

## Machine Rating

### ★ Not Working (NW)

Machine not operational or in really bad conditions. Machine has to be demolished or sold as a "parts". Machine not in security conditions.

### ★★ Poor (P)

Machine in bad condition, got visible cracks or repairable structural issues. Machine is operational but, in order to work properly, it may need significant repairs to tyres/truck, paint, pins and/or bushings, power train, hydraulic system.

### ★★★ Good (G)

Machine is in good condition and operational, with no structural issues. Tyres/Track around 30/40% of residual life. No relevant hydraulic leaks, pins/bushings with normal wear, frame may need to be repainted. Machine is ready to work "AS IS", it may need minor repairs for a better performance. Machine in security conditions or easy to be in safety condition.

### ★★★★ Very Good (VG)

Machine is in very good conditions, with no more of 5 years and/or 5000 working hours. No structural issues; painting condition is almost perfect. May need an easy check to be sold as "Brand New". Main components with 50/60% of life residue. Machine in security conditions.

### ★★★★★ Excellent (E)

Machine is in excellent condition, comparable to a new one. Main components-with 70/80% of life residue. Machine in security conditions.