

SALES REPORT: CATERPILLAR 313GC - SN RHB20214 - Year 2022

This Report is a summary about observations came out from technical inspection done by our specialised technician.

GENERAL CONDITIONS

MACHINE DATA

Model: 313GC

Family: SMALL EXCAVATOR

Serial Number: RHB20214

Order Number MU/MM: MM00616332

Construction year: 2022

Hour meter: 803

General residual conditions Truck/Tyres: 60 %

Machine main application: Basic application

Location: CAGLIARI branch

Rating: ★★☆☆☆

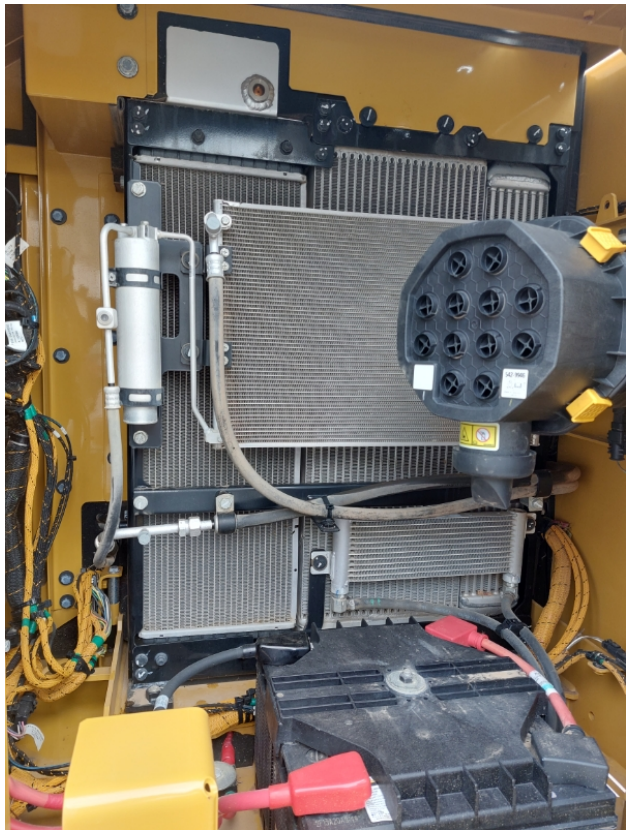
Public price: 111.500 €

MACHINE CONFIGURATION

- Machine type Standard • Boom type Mono boom • Plant features Versatility • Quick coupler Hydraulic • Bucket Standard • Truck type Fixed • Blade • General Truck Residual 60% • Cabin type Fixed standard • Cabin fog Front superiore • Air Conditioning system • Product Link • 13800 Kg • CE Mark • CE Certificate • EPA Tag
- Use and maintenance manual

MACHINE PHOTOS







GENERAL APPEARANCE

◆ Painting Conditions	Very Good
◆ Counterweight conditions:	Very good
◆ Frame/Bumper conditions:	Very Good

TRUCK

◆ Sprockets residual:	60
◆ Front idler wheel residual:	60
◆ Rollers upper/bottom residual:	60
◆ Chains residual:	60

Right side

◆ Door conditions (right):	Very good
◆ Spar conditions:	Very good

Left side

- ◆ Door conditions (left): Very good

- ◆ Door conditions (left): Very good

- ◆ Spar conditions (left): Very good

- ◆ Hood/Armor bottom conditions: Present and intact

Functionality

Engine & electrical system functionality

- ◆ In quale stato è stata visionata la macchina: Accesa e funzionante "al lavoro"

- ◆ Engine working conditions: Very good

- ◆ Engine with oil leaks: No

- ◆ Engine presents blowby: No

- ◆ Oil-Water presence: No

- ◆ Engine present smokiness: No

- ◆ Radiator conditions: Very good

- ◆ Starter motor conditions: Very good

- ◆ Batteries/Cables conditions: Very good

- ◆ Presence of electrical fault: No

Functionality drive and rotation



- ◆ Hydraulic pump conditions: Very good

- ◆ Engine rotation conditions: Very good

- ◆ Engine travel conditions: Very good

- ◆ Final drives conditions: Very good

- ◆ Hydraulic joint conditions: Very good
Presence of leaks : No

- ◆ Hydraulic joint conditions: Very good
Presence of leaks : No

Linkage Group

- ◆ Hydraulic conditions linkage group: No

- ◆ Boom structure: Very good
Presence of welding/cracks : No

- ◆ Stick structure: Very good
Presence of welding/cracks : No

- ◆ Flexible pipes conditions: Very good

- ◆ Boom cylinders conditions: Very good
Leaks : No

- ◆ Stick cylinder conditions: Very good
Leaks : No

- ◆ Bucket cylinder conditions: Very good
Leaks : No

- ◆ Pins & Bushings boom conditions: Very good

- ◆ Pins & Bushings stick conditions: Very good

- ◆ Pins & Bushings bucket conditions: Very good

- ◆ Bucket & Get conditions: Very good

- ◆ Quick Coupler conditions: Very good

- ◆ Auto Lube working conditions: No

Cabin and Tools

- ◆ Conditions internal cabin: Very good

- ◆ Flashing presents issues: Yes

- ◆ Lights & Windshield present issues: Presents and functioning

- ◆ Air conditioning is working: Presente e funzionante

- ◆ Back & side camera conditions: Present and functioning

Check 81/2008

- ◆ Glass conditions: Excellent - no needs repair

- ◆ Lights conditions: Excellent - no needs repair

- ◆ Rear view mirrors conditions: Excellent - no needs repair

- ◆ Stepladders & handrails conditions: Very good

- ◆ Cameras conditions: Excellent - no needs repair

- ◆ Flashing conditions: Present and functioning

- ◆ Safety belt conditions: Present and valid

- ◆ Controls been modified: No



- ◆ Presence of Exclusion Control Lever: Yes

- ◆ Are Tools Functional & Visible with tag: Yes

- ◆ Canopy completed and comes with keys and bolt: Yes

- ◆ All Pipes with no damage e/o scratches: Yes

- ◆ Batteries box shielded: Yes

- ◆ Acoustic alarm works properly: Yes

- ◆ Boardwalk presence: Present and functioning

Valutazione Macchina

★ Non Funzionante (NF)

La macchina si presenta non funzionante e/o in pessime condizioni. Macchina da demolire o venduta per parti di ricambio. La macchina NON è in sicurezza.

★★ Scarso (S)

La macchina è in cattivo stato e può presentare visibili rotture e/o crepe su tutta la struttura. Per il suo ottimale funzionamento, o per essere avviata, può necessitare di importanti riparazioni a carro/gomme, perdite d'olio, riverniciatura completa, componenti principali, messa in sicurezza.

★★★ Buono (B)

La macchina si presenta in buone condizioni sia estetiche che di funzionamento. Carro/Gomme hanno orientativamente un 30/40% di vita residua. La macchina non presenta importanti rotture e/o perdite d'olio. La macchina è pronta per lavorare "AS IS" anche se potrebbe richiedere piccoli interventi di riparazione/migliorie. La macchina è in sicurezza.

★★★★ Molto Buono (O)

La macchina si presenta in condizioni molto buone, non ha più di 5 anni e/o 5000 ore lavorate. Non presenta problemi strutturali e può essere preparata esteticamente per renderla "quasi nuova". Componenti principali non inferiori al 50/60% di vita residua, macchina in sicurezza.

★★★★★ Eccellente (E)

La macchina si presenta in condizioni eccellenti, prossime al nuovo. Componenti principali non inferiori al 70/80% di vita residua, macchina in sicurezza.

Machine Rating

★ Not Working (NW)

Machine not operational or in really bad conditions. Machine has to be demolished or sold as a "parts". Machine not in security conditions.

★★ Poor (P)

Machine in bad condition, got visible cracks or repairable structural issues. Machine is operational but, in order to work properly, it may need significant repairs to tyres/truck, paint, pins and/or bushings, power train, hydraulic system.

★★★ Good (G)

Machine is in good condition and operational, with no structural issues. Tyres/Track around 30/40% of residual life. No relevant hydraulic leaks, pins/bushings with normal wear, frame may need to be repainted. Machine is ready to work "AS IS", it may need minor repairs for a better performance. Machine in security conditions or easy to be in safety condition.

★★★★ Very Good (VG)

Machine is in very good conditions, with no more of 5 years and/or 5000 working hours. No structural issues; painting condition is almost perfect. May need an easy check to be sold as "Brand New". Main components with 50/60% of life residue. Machine in security conditions.

★★★★★ Excellent (E)

Machine is in excellent condition, comparable to a new one. Main components-with 70/80% of life residue. Machine in security conditions.