

SALES REPORT: CATERPILLAR 323LN - SN KPE20366 - Year 2022

This Report is a summary about observations came out from technical inspection done by our specialised technician.

GENERAL CONDITIONS

MACHINE DATA

Model: 323LN

Family: MEDIUM EXCAVATOR

Serial Number: KPE20366

Order Number MU/MM: MM00637850

Construction year: 2022

Hour meter: 4558

General residual conditions Truck/Tyres: 1 %

Machine main application: Basic application

Location: AREZZO branch

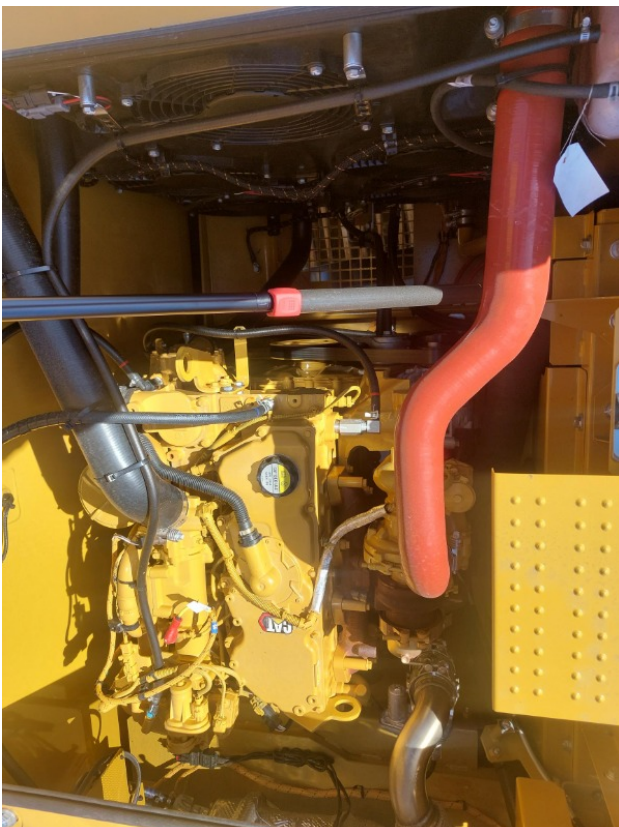
Rating: ★★☆☆☆

Public price: 127.000 €

MACHINE CONFIGURATION

• Machine type Standard • Boom type Mono boom • Boom check valves • Stick check valves • Plant features Versatility • Quick coupler Hydraulic • Bucket Standard • Truck type Fixed • Blade • General Truck Residual 1% • Cabin type Fixed standard • Cabin fog Front superiore • Air Conditioning system • Auto Lube system • Product Link • Antitheft alarm • 1 Kg • CE Mark • CE Certificate • EPA Tag • Use and maintenance manual

MACHINE PHOTOS







GENERAL APPEARANCE

◆ Painting Conditions	Very Good
-----------------------	-----------

◆ Counterweight conditions:	Very good
-----------------------------	-----------

◆ Frame/Bumper conditions:	Very Good
----------------------------	-----------

TRUCK

◆ Sprockets residual:	1
-----------------------	---

◆ Front idler wheel residual:	1
-------------------------------	---

◆ Rollers upper/bottom residual:	1
----------------------------------	---

◆ Chains residual:	1
--------------------	---

Right side

◆ Door conditions (right):	Very good
----------------------------	-----------

◆ Spar conditions:	Very good
--------------------	-----------

Left side

◆ Door conditions (left):	Very good
---------------------------	-----------

◆ Door conditions (left):	Very good
---------------------------	-----------

◆ Spar conditions (left):	Very good
---------------------------	-----------

◆ Hood/Armor bottom conditions:	Present and intact
---------------------------------	--------------------

Functionality

Engine & electrical system functionality

◆ In quale stato è stata visionata la macchina:	Accesa e funzionante "al lavoro"
◆ Engine working conditions:	Very good
◆ Engine with oil leaks:	No
◆ Engine presents blowby:	No
◆ Oil-Water presence:	No
◆ Engine present smokiness:	No
◆ Radiator conditions:	Very good
◆ Starter motor conditions:	Very good
◆ Batteries/Cables conditions:	Very good
◆ Presence of electrical fault:	No

Functionality drive and rotation

◆ Hydraulic pump conditions:	Very good
◆ Engine rotation conditions:	Very good
◆ Engine travel conditions:	Very good
◆ Final drives conditions:	Very good
◆ Hydraulic joint conditions:	Very good
	Presence of leaks : No
◆ Hydraulic joint conditions:	Very good
	Presence of leaks : No

Linkage Group

◆ Hydraulic conditions linkage group:	No
◆ Boom structure:	Very good
	Presence of welding/cracks : No
◆ Stick structure:	Very good
	Presence of welding/cracks : No
◆ Flexible pipes conditions:	Very good
◆ Boom cylinders conditions:	Very good
	Leaks : No
◆ Stick cylinder conditions:	Very good
	Leaks : No
◆ Bucket cylinder conditions:	Very good
	Leaks : No
◆ Pins & Bushings boom conditions:	Very good
◆ Pins & Bushings stick conditions:	Very good
◆ Pins & Bushings bucket conditions:	Very good
◆ Bucket & Get conditions:	Very good
◆ Quick Coupler conditions:	Very good
◆ Auto Lube working conditions:	No

Cabin and Tools

◆ Conditions internal cabin:	Very good
------------------------------	-----------

◆ Flashing presents issues:	Yes
◆ Lights & Windshield present issues:	Presents and functioning
◆ Air conditioning is working:	Presente e funzionante
◆ Back & side camera conditions:	Present and functioning

Check 81/2008

◆ Glass conditions:	Excellent - no needs repair
◆ Lights conditions:	Excellent - no needs repair
◆ Rear view mirrors conditions:	Excellent - no needs repair
◆ Stepladders & handrails conditions:	Very good
◆ Cameras conditions:	Excellent - no needs repair
◆ Flashing conditions:	Present and functioning
◆ Safety belt conditions:	Present and valid
◆ Controls been modified:	No
◆ Presence of Exclusion Control Lever:	Yes
◆ Are Tools Functional & Visible with tag:	Yes
◆ Canopy completed and comes with keys and bolt:	Yes
◆ All Pipes with no damage e/o scratches:	Yes
◆ Batteries box shielded:	Yes
◆ Acoustic alarm works properly:	Yes
◆ Boardwalk presence:	Present and functioning

Valutazione Macchina

★ Non Funzionante (NF)

La macchina si presenta non funzionante e/o in pessime condizioni. Macchina da demolire o venduta per parti di ricambio. La macchina NON è in sicurezza.

★★ Scarso (S)

La macchina è in cattivo stato e può presentare visibili rotture e/o crepe su tutta la struttura. Per il suo ottimale funzionamento, o per essere avviata, può necessitare di importanti riparazioni a carro/gomme, perdite d'olio, riverniciatura completa, componenti principali, messa in sicurezza.

★★★ Buono (B)

La macchina si presenta in buone condizioni sia estetiche che di funzionamento. Carro/Gomme hanno orientativamente un 30/40% di vita residua. La macchina non presenta importanti rotture e/o perdite d'olio. La macchina è pronta per lavorare "AS IS" anche se potrebbe richiedere piccoli interventi di riparazione/migliorie. La macchina è in sicurezza.

★★★★ Molto Buono (O)

La macchina si presenta in condizioni molto buone, non ha più di 5 anni e/o 5000 ore lavorate. Non presenta problemi strutturali e può essere preparata esteticamente per renderla "quasi nuova". Componenti principali non inferiori al 50/60% di vita residua, macchina in sicurezza.

★★★★★ Eccellente (E)

La macchina si presenta in condizioni eccellenti, prossime al nuovo. Componenti principali non inferiori al 70/80% di vita residua, macchina in sicurezza.

Machine Rating

★ Not Working (NW)

Machine not operational or in really bad conditions. Machine has to be demolished or sold as a "parts". Machine not in security conditions.

★★ Poor (P)

Machine in bad condition, got visible cracks or repairable structural issues. Machine is operational but, in order to work properly, it may need significant repairs to tyres/truck, paint, pins and/or bushings, power train, hydraulic system.

★★★ Good (G)

Machine is in good condition and operational, with no structural issues. Tyres/Track around 30/40% of residual life. No relevant hydraulic leaks, pins/bushings with normal wear, frame may need to be repainted. Machine is ready to work "AS IS", it may need minor repairs for a better performance. Machine in security conditions or easy to be in safety condition.

★★★★ Very Good (VG)

Machine is in very good conditions, with no more of 5 years and/or 5000 working hours. No structural issues; painting condition is almost perfect. May need an easy check to be sold as "Brand New". Main components with 50/60% of life residue. Machine in security conditions.

★★★★★ Excellent (E)

Machine is in excellent condition, comparable to a new one. Main components-with 70/80% of life residue. Machine in security conditions.