

SALES REPORT: CATERPILLAR 323 - SN RAZ00533 - Year 2018

This Report is a summary about observations comes out from technical inspection done by our specialised technician.

GENERAL CONDITIONS

MACHINE DATA

Model: 323

Family: MEDIUM EXCAVATOR

Serial Number: RAZ00533

Order Number MU/MM: MU00695199

Construction year: 2018

Hour meter: 8917

General residual conditions Truck/Tyres: 50 %

Machine main application: Basic application

Location: In comodato

Rating: ★★☆☆☆

Public price: 139.000 €

MACHINE CONFIGURATION

● Machine type Standard ● Boom type Mono boom ● Boom check valves ● Stick check valves ● Plant features Versatility ● Quick coupler Hydraulic Universale CAT ● Bucket Standard 1300 Get undefined ● Truck type Fixed ● General Truck Residual 50% ● Cabin type Fixed standard ● Cabin fog Front superiore ● Air Conditioning system ● Product Link ● CE Mark ● CE Certificate ● Use and maintenance manual Macchina ● EPA Family Code: HPKXL07.0BN1 ● CAT_NR_EPA/CARB_MLIT_EU_R120_China Export

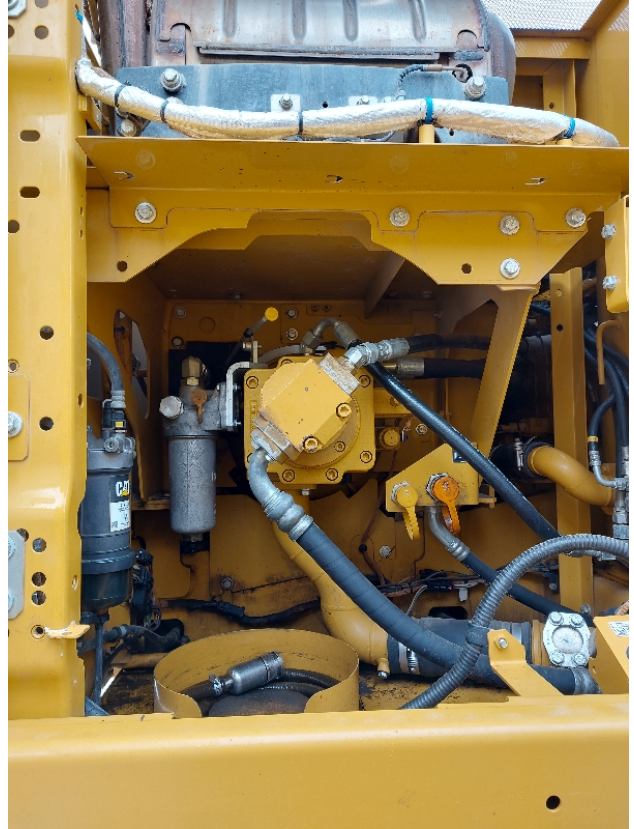
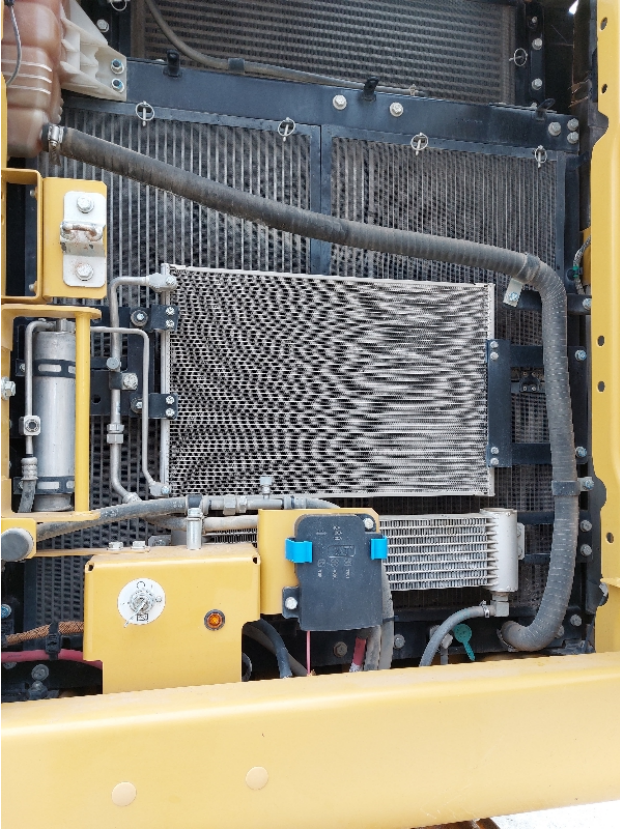
MACHINE PHOTOS

◆ Il contaore è:

Funzionante













GENERAL APPEARANCE

- | | |
|-----------------------------|-----------|
| ◆ Painting Conditions | Very Good |
| <hr/> | |
| ◆ Counterweight conditions: | Very good |
| <hr/> | |
| ◆ Frame/Bumper conditions: | Very Good |
| <hr/> | |

TRUCK

- | | |
|----------------------------------|----|
| ◆ Sprockets residual: | 50 |
| <hr/> | |
| ◆ Front idler wheel residual: | 50 |
| <hr/> | |
| ◆ Rollers upper/bottom residual: | 50 |
| <hr/> | |
| ◆ Chains residual: | 50 |
| <hr/> | |

Right side

- ◆ Door conditions (right): Very good
 - ◆ Spar conditions: Good
-

Left side

- ◆ Door conditions (left): Very good
 - ◆ Door conditions (left): Very good
 - ◆ Spar conditions (left): Good
 - ◆ Hood/Armor bottom conditions: Present and intact
-

Functionality

Engine & electrical system functionality

- ◆ In quale stato è stata visionata la macchina: Accesa e provata per ispezione
- ◆ Engine working conditions: Very good
- ◆ Engine with oil leaks: No
- ◆ Engine presents blowby: No
- ◆ Oil-Water presence: No
- ◆ Engine present smokiness: No
- ◆ Radiator conditions: Very good
- ◆ Starter motor conditions: Very good

◆ Batteries/Cables conditions: Very good

◆ Presence of electrical fault: No

Functionality drive and rotation

◆ Hydraulic pump conditions: Very good

◆ Engine rotation conditions: Very good

◆ Engine travel conditions: Very good

◆ Final drives conditions: Very good

◆ Hydraulic joint conditions: Very good

Presence of leaks : No

◆ Hydraulic joint conditions: Good

Presence of leaks : No

Linkage Group

◆ Hydraulic conditions linkage group: No

◆ Boom structure: Excellent

Presence of welding/cracks : No

◆ Stick structure: Good

Presence of welding/cracks : No

◆ Flexible pipes conditions: Very good

◆ Boom cylinders conditions: Good

Leaks : No

◆ Stick cylinder conditions: Good

Leaks : No

- ◆ Bucket cylinder conditions:
Good

- Leaks : No

- ◆ Pins & Bushings boom conditions:
Good

- ◆ Pins & Bushings stick conditions:
Good

- ◆ Pins & Bushings bucket conditions:
Good

- ◆ Bucket & Get conditions:
Good

- ◆ Quick Coupler conditions:
Very good

- ◆ Auto Lube working conditions:
No

Cabin and Tools

- ◆ Conditions internal cabin:
Excellent

- ◆ Flashing presents issues:
No

- ◆ Lights & Windshield present issues:
Presents and functioning

- ◆ Air conditioning is working:
Presente e funzionante

- ◆ Back & side camera conditions:
Present and functioning

Check 81/2008

- ◆ Glass conditions:
Excellent - no needs repair

- ◆ Lights conditions:
Excellent - no needs repair

- ◆ Rear view mirrors conditions:
Excellent - no needs repair

- ◆ Stepladders & handrails conditions:
Excellent

◆ Cameras conditions:	Excellent - no needs repair
◆ Flashing conditions:	Not functioning
◆ Safety belt conditions:	Present and valid
◆ Controls been modified:	No
◆ Presence of Exclusion Control Lever:	Yes
◆ Are Tools Functional & Visible with tag:	Yes
◆ Canopy completed and comes with keys and bolt:	Yes
◆ All Pipes with no damage e/o scratches:	Yes
◆ Batteries box shielded:	Yes
◆ Acoustic alarm works properly:	Yes
◆ Boardwalk presence:	Not present

Valutazione Macchina

★ Non Funzionante (NF)

La macchina si presenta non funzionante e/o in pessime condizioni. Macchina da demolire o venduta per parti di ricambio. La macchina NON è in sicurezza.

★★ Scarso (S)

La macchina è in cattivo stato e può presentare visibili rotture e/o crepe su tutta la struttura. Per il suo ottimale funzionamento, o per essere avviata, può necessitare di importanti riparazioni a carro/gomme, perdite d'olio, riverniciatura completa, componenti principali, messa in sicurezza.

★★★ Buono (B)

La macchina si presenta in buone condizioni sia estetiche che di funzionamento. Carro/Gomme hanno orientativamente un 30/40% di vita residua. La macchina non presenta importanti rotture e/o perdite d'olio. La macchina è pronta per lavorare "AS IS" anche se potrebbe richiedere piccoli interventi di riparazione/migliorie. La macchina è in sicurezza.

★★★★ Molto Buono (O)

La macchina si presenta in condizioni molto buone, non ha più di 5 anni e/o 5000 ore lavorate. Non presenta problemi strutturali e può essere preparata esteticamente per renderla "quasi nuova". Componenti principali non inferiori al 50/60% di vita residua, macchina in sicurezza.

★★★★★ Eccellente (E)

La macchina si presenta in condizioni eccellenti, prossime al nuovo. Componenti principali non inferiori al 70/80% di vita residua, macchina in sicurezza.

Machine Rating

★ Not Working (NW)

Machine not operational or in really bad conditions. Machine has to be demolished or sold as a "parts". Machine not in security conditions.

★★ Poor (P)

Machine in bad condition, got visible cracks or repairable structural issues. Machine is operational but, in order to work properly, it may need significant repairs to tyres/truck, paint, pins and/or bushings, power train, hydraulic system.

★★★ Good (G)

Machine is in good condition and operational, with no structural issues. Tyres/Track around 30/40% of residual life. No relevant hydraulic leaks, pins/bushings with normal wear, frame may need to be repainted. Machine is ready to work "AS IS", it may need minor repairs for a better performance. Machine in security conditions or easy to be in safety condition.

★★★★ Very Good (VG)

Machine is in very good conditions, with no more of 5 years and/or 5000 working hours. No structural issues; painting condition is almost perfect. May need an easy check to be sold as "Brand New". Main components with 50/60% of life residue. Machine in security conditions.

★★★★★ Excellent (E)

Machine is in excellent condition, comparable to a new one. Main components-with 70/80% of life residue. Machine in security conditions.