

## SALES REPORT: KOMPTECH HURRIKAN - SN 82083 - Year 2022

This Report is a summary about observations came out from technical inspection done by our specialised technician.

### GENERAL CONDITIONS

---

### MACHINE DATA

---

**Model:** HURRIKAN

**Family:** SEPARATOR

**Serial Number:** 82083

**Order Number MU/MM:** MU00699781

**Construction year:** 2022

**Hour meter:** 2320

**General residual conditions Truck/Tyres:** %

**Machine main application:** Basic application

**Location:** Out for hire

**Rating:** ★★☆☆☆

**Public price:** 185.000 €

### MACHINE CONFIGURATION

---

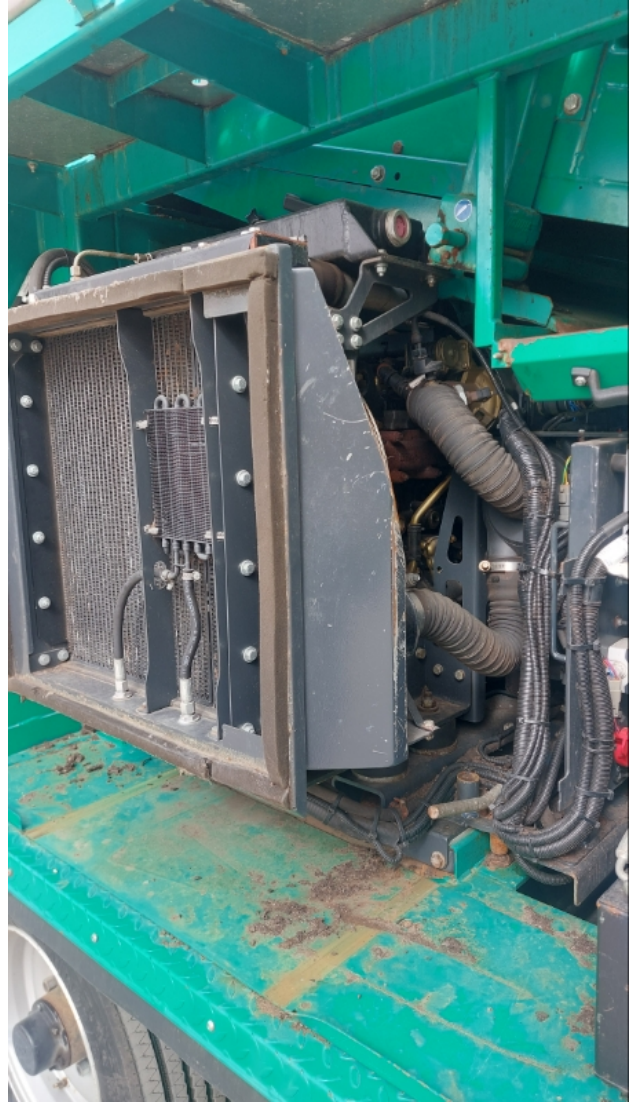
● Machine type Standard ● ● undefined ● 20000 Kg ● CE Mark ● CE Certificate ● Use and maintenance manual

**MACHINE PHOTOS**

---













## GENERAL APPEARANCE

---

◆ Telaio:	Buono
◆ Painting Conditions	Good
◆ Tramoggia:	Buono

## RETI

---

◆ Spar conditions:	Quadra
	Conditiona : Good
◆ Rete 2° piano:	Antintasante

Condizioni : Buono

---

◆ Rete 3° piano (se presente): NA - Non Applicabile

---

## NASTRI

---

◆ Nastro principale (tappeto, raschiatori, rulli): Buono

---

◆ Nastri laterali: Buono

---

◆ Deferrizzatore: Buono

---

◆ Sistema abbattimento polveri: Buono

---

## CARRO

---

◆ Condizioni generali carro Buono

---

## Functionality

---

◆ In quale stato è stata visionata la macchina: Accesa e funzionante "al lavoro"

---

### Engine & electrical system functionality

---

◆ Engine working conditions: Good

---

◆ Engine with oil leaks: No

---

◆ Engine presents blowby: No

---

◆ Engine present smokiness: No

---

◆ Radiator conditions: Good

---

◆ Starter motor conditions: Good

---

◆ Batteries/Cables conditions: Good

---

◆ Presence of electrical fault: Not present

---

**Functionality drive and rotation**

---

◆ Hydraulic pump conditions: Good

---

◆ Engine travel conditions: Good

---

**Linkage Group**

---

◆ Boom structure: Good

Presenza di perdite? Se si, specificare da dove: :-

---

◆ Stick structure: Good

Presenza di perdite? Se si, specificare da dove: :-

---

**Check 81/2008**

---

◆ Lights conditions: Excellent - no needs repair

---

◆ Condizioni specchietti: Eccellente - non necessita riparazione

---

◆ Stepladders & handrails conditions: Good

---

◆ Cameras conditions: Excellent - no needs repair

---

◆ Flashing conditions: Present and functioning

---

◆ Controls been modified: No

---

◆ Presence of Exclusion Control Lever: Yes

If No, are control levers protected to accidental functionality? : Yes

---

◆ Are Tools Functional & Visible with tag: Yes

---

◆ Canopy completed and comes with keys and bolt: Yes

---

◆ All Pipes with no damage e/o scratches: Yes

---

◆ Batteries box shielded: Yes

---

◆ Acoustic alarm works properly: Yes

---

◆ Boardwalk presence: Present and functioning

---

## Valutazione Macchina

### ★ Non Funzionante (NF)

La macchina si presenta non funzionante e/o in pessime condizioni. Macchina da demolire o venduta per parti di ricambio. La macchina NON è in sicurezza.

### ★★ Scarso (S)

La macchina è in cattivo stato e può presentare visibili rotture e/o crepe su tutta la struttura. Per il suo ottimale funzionamento, o per essere avviata, può necessitare di importanti riparazioni a carro/gomme, perdite d'olio, riverniciatura completa, componenti principali, messa in sicurezza.

### ★★★ Buono (B)

La macchina si presenta in buone condizioni sia estetiche che di funzionamento. Carro/Gomme hanno orientativamente un 30/40% di vita residua. La macchina non presenta importanti rotture e/o perdite d'olio. La macchina è pronta per lavorare "AS IS" anche se potrebbe richiedere piccoli interventi di riparazione/migliorie. La macchina è in sicurezza.

### ★★★★ Molto Buono (O)

La macchina si presenta in condizioni molto buone, non ha più di 5 anni e/o 5000 ore lavorate. Non presenta problemi strutturali e può essere preparata esteticamente per renderla "quasi nuova". Componenti principali non inferiori al 50/60% di vita residua, macchina in sicurezza.

### ★★★★★ Eccellente (E)

La macchina si presenta in condizioni eccellenti, prossime al nuovo. Componenti principali non inferiori al 70/80% di vita residua, macchina in sicurezza.

## Machine Rating

### ★ Not Working (NW)

Machine not operational or in really bad conditions. Machine has to be demolished or sold as a "parts". Machine not in security conditions.

### ★★ Poor (P)

Machine in bad condition, got visible cracks or repairable structural issues. Machine is operational but, in order to work properly, it may need significant repairs to tyres/truck, paint, pins and/or bushings, power train, hydraulic system.

### ★★★ Good (G)

Machine is in good condition and operational, with no structural issues. Tyres/Track around 30/40% of residual life. No relevant hydraulic leaks, pins/bushings with normal wear, frame may need to be repainted. Machine is ready to work "AS IS", it may need minor repairs for a better performance. Machine in security conditions or easy to be in safety condition.

### ★★★★ Very Good (VG)

Machine is in very good conditions, with no more of 5 years and/or 5000 working hours. No structural issues; painting condition is almost perfect. May need an easy check to be sold as "Brand New". Main components with 50/60% of life residue. Machine in security conditions.

### ★★★★★ Excellent (E)

Machine is in excellent condition, comparable to a new one. Main components-with 70/80% of life residue. Machine in security conditions.