

SALES REPORT: CATERPILLAR 330F - SN JFR20044 - Year 2017

This Report is a summary about observations came out from technical inspection done by our specialised technician.

GENERAL CONDITIONS

MACHINE DATA

Model: 330F

Family: MEDIUM EXCAVATOR

Serial Number: JFR20044

Order Number MU/MM: MU00728505

Construction year: 2017

Hour meter: 7321

General residual conditions Truck/Tyres: 50 %

Machine main application: Industry - corrosive field, Landfill

Location: Stock CAGLIARI

Rating: ★★☆☆☆

Public price: Ask

MACHINE CONFIGURATION

• Machine type Standard • Boom type Mono boom • Boom check valves • Stick check valves • Plant features Versatility • Quick coupler Mechanic Cat cw45s • Bucket Standard MM 1500 Get undefined Una • Truck type Fixed • General Truck Residual 50% Tendingoli bloccati. Corrosione diffusa. Recentemente sabbiato e riverniciato • Cabin type Fixed standard • Air Conditioning system • Product Link • 29073 Kg • CE Mark • CE Certificate • Use and maintenance manual COFANI E parti con ruggine sabbiato e ruverniciate salvo cofano motore. Valvola EGR nuova. Nessun allarme attivo. • EPA Family Code: HPKXL07.0BN1

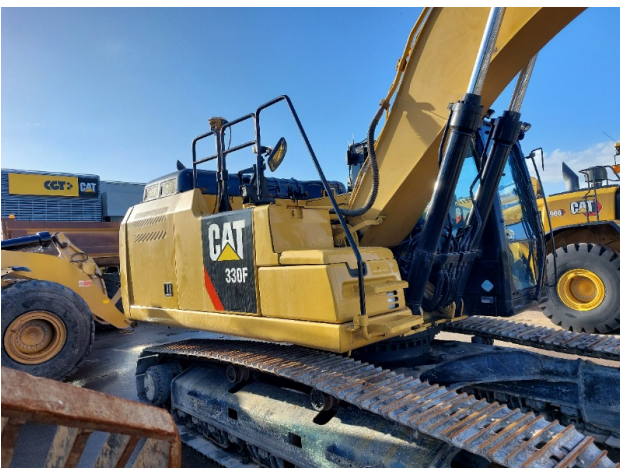
MACHINE PHOTOS

◆ Il contaore è:

Funzionante

◆ Annotazioni sul:

Contaore digitale ore 4.493. Quello analogico funziona male









GENERAL APPEARANCE

◆ Painting Conditions	Very Good
◆ Counterweight conditions:	Very good
◆ Frame/Bumper conditions:	Good

TRUCK

◆ Sprockets residual:	50
◆ Front idler wheel residual:	50
◆ Rollers upper/bottom residual:	50
◆ Chains residual:	50
◆ Altre anomalie	tendingoli appena revisionati

Right side

◆ Door conditions (right):	NA - Not applicable
◆ Spar conditions:	Very good

Left side

◆ Door conditions (left):	Poor
◆ Door conditions (left):	Good
◆ Spar conditions (left):	Very good
◆ Other notes	Parti zincate dei flessibili arrugginite
◆ Hood/Armor bottom conditions:	Present and intact

Functionality

Engine & electrical system functionality



- ◆ In quale stato è stata visionata la macchina: Accesa e provata per ispezione

- ◆ Engine working conditions: Very good

- ◆ Engine with oil leaks: No

- ◆ Engine presents blowby: No

- ◆ Oil-Water presence: No

- ◆ Engine present smokiness: No

- ◆ Radiator conditions: Good

- ◆ Starter motor conditions: Good

- ◆ Batteries/Cables conditions: Good

- ◆ Presence of electrical fault: No

Functionality drive and rotation

- ◆ Hydraulic pump conditions: Good

- ◆ Engine rotation conditions: Good

- ◆ Engine travel conditions: Good

- ◆ Final drives conditions: Good

- ◆ Hydraulic joint conditions: Good
Presence of leaks : No

- ◆ Hydraulic joint conditions: Good
Presence of leaks : No

Linkage Group

◆ Hydraulic conditions linkage group:	No
◆ Boom structure:	Good
	Presence of welding/cracks : No
◆ Stick structure:	Good
	Presence of welding/cracks : No
◆ Flexible pipes conditions:	Poor
◆ Boom cylinders conditions:	Good
	Leaks : No
◆ Stick cylinder conditions:	Good
	Leaks : No
◆ Bucket cylinder conditions:	Good
	Leaks : No
◆ Pins & Bushings boom conditions:	Good
◆ Pins & Bushings stick conditions:	Good
◆ Pins & Bushings bucket conditions:	Good
◆ Bucket & Get conditions:	Good
◆ Quick Coupler conditions:	Poor
◆ Auto Lube working conditions:	No
◆ Annotazione sul gruppo caricatore: passaggio di compressione dalla testata - lavorazione da effettuare già autorizzata- presenza di corrosione all'nterno - macchina ben riverniciata	

Cabin and Tools

◆ Conditions internal cabin:	Very good
------------------------------	-----------

◆ Flashing presents issues:	Yes
◆ Lights & Windshield present issues:	Presents and functioning
◆ Air conditioning is working:	Presente e funzionante
◆ Back & side camera conditions:	Present and functioning

Check 81/2008

◆ Glass conditions:	Excellent - no needs repair
◆ Lights conditions:	Excellent - no needs repair
◆ Rear view mirrors conditions:	Excellent - no needs repair
◆ Stepladders & handrails conditions:	Good
◆ Cameras conditions:	Excellent - no needs repair
◆ Flashing conditions:	Not functioning
◆ Safety belt conditions:	Present and expired
◆ Controls been modified:	No
◆ Presence of Exclusion Control Lever:	Yes
◆ Are Tools Functional & Visible with tag:	Yes
◆ Canopy completed and comes with keys and bolt:	Yes
◆ All Pipes with no damage e/o scratches:	Yes
◆ Batteries box shielded:	Yes
◆ Acoustic alarm works properly:	Yes
◆ Boardwalk presence:	Present and functioning

◆ Annotazioni su:

Specchietto sn mancante

Valutazione Macchina

★ Non Funzionante (NF)

La macchina si presenta non funzionante e/o in pessime condizioni. Macchina da demolire o venduta per parti di ricambio. La macchina NON è in sicurezza.

★★ Scarso (S)

La macchina è in cattivo stato e può presentare visibili rotture e/o crepe su tutta la struttura. Per il suo ottimale funzionamento, o per essere avviata, può necessitare di importanti riparazioni a carro/gomme, perdite d'olio, riverniciatura completa, componenti principali, messa in sicurezza.

★★★ Buono (B)

La macchina si presenta in buone condizioni sia estetiche che di funzionamento. Carro/Gomme hanno orientativamente un 30/40% di vita residua. La macchina non presenta importanti rotture e/o perdite d'olio. La macchina è pronta per lavorare "AS IS" anche se potrebbe richiedere piccoli interventi di riparazione/migliorie. La macchina è in sicurezza.

★★★★ Molto Buono (O)

La macchina si presenta in condizioni molto buone, non ha più di 5 anni e/o 5000 ore lavorate. Non presenta problemi strutturali e può essere preparata esteticamente per renderla "quasi nuova". Componenti principali non inferiori al 50/60% di vita residua, macchina in sicurezza.

★★★★★ Eccellente (E)

La macchina si presenta in condizioni eccellenti, prossime al nuovo. Componenti principali non inferiori al 70/80% di vita residua, macchina in sicurezza.

Machine Rating

★ Not Working (NW)

Machine not operational or in really bad conditions. Machine has to be demolished or sold as a "parts". Machine not in security conditions.

★★ Poor (P)

Machine in bad condition, got visible cracks or repairable structural issues. Machine is operational but, in order to work properly, it may need significant repairs to tyres/truck, paint, pins and/or bushings, power train, hydraulic system.

★★★ Good (G)

Machine is in good condition and operational, with no structural issues. Tyres/Track around 30/40% of residual life. No relevant hydraulic leaks, pins/bushings with normal wear, frame may need to be repainted. Machine is ready to work "AS IS", it may need minor repairs for a better performance. Machine in security conditions or easy to be in safety condition.

★★★★ Very Good (VG)

Machine is in very good conditions, with no more of 5 years and/or 5000 working hours. No structural issues; painting condition is almost perfect. May need an easy check to be sold as "Brand New". Main components with 50/60% of life residue. Machine in security conditions.

★★★★★ Excellent (E)

Machine is in excellent condition, comparable to a new one. Main components-with 70/80% of life residue. Machine in security conditions.