

SALES REPORT: CATERPILLAR 323F - SN MFY20283 - Year 2019

This Report is a summary about observations came out from technical inspection done by our specialised technician.

GENERAL CONDITIONS

MACHINE DATA

Model: 323F

Family: MEDIUM EXCAVATOR

Serial Number: MFY20283

Order Number MU/MM: MU00734791

Construction year: 2019

Hour meter: 6122

General residual conditions Truck/Tyres: 40 %

Machine main application: Basic application

Location: Stock SASSARI

Rating: ★★☆☆☆

Public price: Ask

MACHINE CONFIGURATION

• Machine type Standard • Boom type Mono boom • Boom check valves • Stick check valves • Plant features Versatility • Quick coupler Hydraulic CAT CW 40S • Bucket Rock/Stone MM1400 HD Get undefined • Truck type Fixed • General Truck Residual 40% • Cabin type Fixed standard • Cabin fog Front superiore • Air Conditioning system • Product Link • 23700 Kg • CE Mark • CE Certificate • Use and maintenance manual • KPKXL04.4MW1 EPA

MACHINE PHOTOS

◆ Il contaore è:

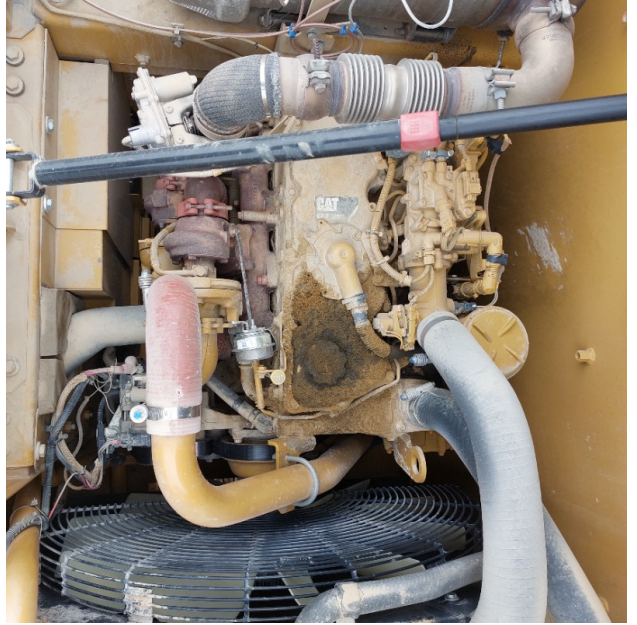
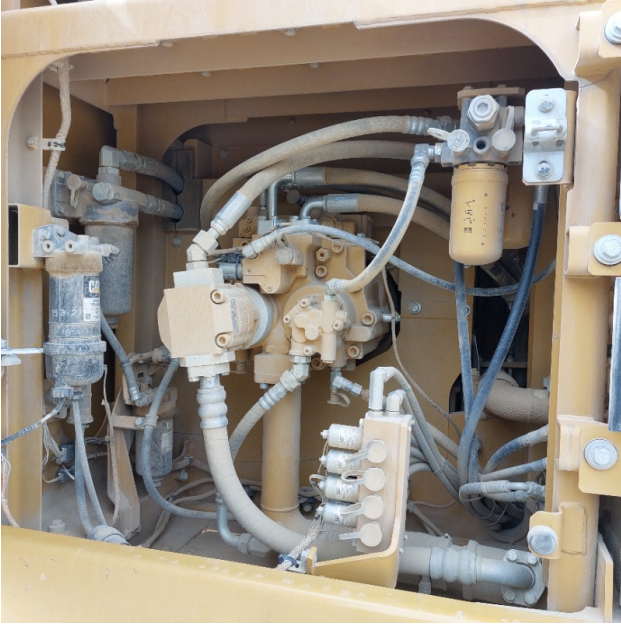
Funzionante













GENERAL APPEARANCE

◆ Painting Conditions Good

◆ Counterweight conditions: Good

◆ Frame/Bumper conditions: Good

TRUCK

- ◆ Sprockets residual: 40

- ◆ Front idler wheel residual: 50

- ◆ Rollers upper/bottom residual: 50

- ◆ Chains residual: 40

Right side

- ◆ Door conditions (right): Good

- ◆ Spar conditions: Poor

- ◆ Other issues: PICCOLE AMMACCATURE SUI LONGHERONI

Left side

- ◆ Door conditions (left): Good

- ◆ Door conditions (left): Good

- ◆ Spar conditions (left): Poor

- ◆ Other notes PICCOLE AMMACCATURE SUI LONGHERONI

- ◆ Hood/Armor bottom conditions: Present and bash

Functionality

Engine & electrical system functionality

- ◆ In quale stato è stata visionata la macchina: Accesa e provata per ispezione

- ◆ Engine working conditions: Good



◆ Engine with oil leaks: Yes

If Yes, where : GUARNIZIONE TAPPO RABOCCO OLIO

◆ Engine presents blowby: No

◆ Oil-Water presence: No

◆ Engine present smokiness: No

◆ Radiator conditions: Good

◆ Starter motor conditions: Good

◆ Batteries/Cables conditions: Good

◆ Presence of electrical fault: No

Functionality drive and rotation

◆ Hydraulic pump conditions: Good

◆ Engine rotation conditions: Good

◆ Engine travel conditions: Good

◆ Final drives conditions: Good

◆ Hydraulic joint conditions: Good

Presence of leaks : No

◆ Hydraulic joint conditions: Good

Presence of leaks : No

Linkage Group

◆ Hydraulic conditions linkage group: No



- ◆ Boom structure: Good
Presence of welding/cracks : No

- ◆ Stick structure: Good
Presence of welding/cracks : No

- ◆ Flexible pipes conditions: Good

- ◆ Boom cylinders conditions: Good
Leaks : Yes

- ◆ Stick cylinder conditions: Good
Leaks : No

- ◆ Bucket cylinder conditions: Good
Leaks : No

- ◆ Pins & Bushings boom conditions: Poor

- ◆ Pins & Bushings stick conditions: Good

- ◆ Pins & Bushings bucket conditions: Good

- ◆ Bucket & Get conditions: Poor

- ◆ Quick Coupler conditions: Good

- ◆ Auto Lube working conditions: No

Cabin and Tools

- ◆ Conditions internal cabin: Good

- ◆ Flashing presents issues: No

- ◆ Lights & Windshield present issues: Presents and functioning

- ◆ Air conditioning is working: Presente e funzionante



◆ Back & side camera conditions: Present and functioning

Check 81/2008

◆ Glass conditions: Excellent - no needs repair

◆ Lights conditions: Excellent - no needs repair

◆ Rear view mirrors conditions: Broken or Chipped - needs repair

◆ Stepladders & handrails conditions: Good

◆ Cameras conditions: Excellent - no needs repair

◆ Flashing conditions: Not functioning

◆ Safety belt conditions: Present and valid

◆ Controls been modified: No

◆ Presence of Exclusion Control Lever: Yes

If No, are control levers protected to accidental functionality? : Yes

◆ Are Tools Functional & Visible with tag: Yes

◆ Canopy completed and comes with keys and bolt: Yes

◆ All Pipes with no damage e/o scratches: Yes

◆ Batteries box shielded: Yes

◆ Acoustic alarm works properly: Yes

◆ Boardwalk presence: Present and functioning

Valutazione Macchina

★ Non Funzionante (NF)

La macchina si presenta non funzionante e/o in pessime condizioni. Macchina da demolire o venduta per parti di ricambio. La macchina NON è in sicurezza.

★★ Scarso (S)

La macchina è in cattivo stato e può presentare visibili rotture e/o crepe su tutta la struttura. Per il suo ottimale funzionamento, o per essere avviata, può necessitare di importanti riparazioni a carro/gomme, perdite d'olio, riverniciatura completa, componenti principali, messa in sicurezza.

★★★ Buono (B)

La macchina si presenta in buone condizioni sia estetiche che di funzionamento. Carro/Gomme hanno orientativamente un 30/40% di vita residua. La macchina non presenta importanti rotture e/o perdite d'olio. La macchina è pronta per lavorare "AS IS" anche se potrebbe richiedere piccoli interventi di riparazione/migliorie. La macchina è in sicurezza.

★★★★ Molto Buono (O)

La macchina si presenta in condizioni molto buone, non ha più di 5 anni e/o 5000 ore lavorate. Non presenta problemi strutturali e può essere preparata esteticamente per renderla "quasi nuova". Componenti principali non inferiori al 50/60% di vita residua, macchina in sicurezza.

★★★★★ Eccellente (E)

La macchina si presenta in condizioni eccellenti, prossime al nuovo. Componenti principali non inferiori al 70/80% di vita residua, macchina in sicurezza.

Machine Rating

★ Not Working (NW)

Machine not operational or in really bad conditions. Machine has to be demolished or sold as a "parts". Machine not in security conditions.

★★ Poor (P)

Machine in bad condition, got visible cracks or repairable structural issues. Machine is operational but, in order to work properly, it may need significant repairs to tyres/truck, paint, pins and/or bushings, power train, hydraulic system.

★★★ Good (G)

Machine is in good condition and operational, with no structural issues. Tyres/Track around 30/40% of residual life. No relevant hydraulic leaks, pins/bushings with normal wear, frame may need to be repainted. Machine is ready to work "AS IS", it may need minor repairs for a better performance. Machine in security conditions or easy to be in safety condition.

★★★★ Very Good (VG)

Machine is in very good conditions, with no more of 5 years and/or 5000 working hours. No structural issues; painting condition is almost perfect. May need an easy check to be sold as "Brand New". Main components with 50/60% of life residue. Machine in security conditions.

★★★★★ Excellent (E)

Machine is in excellent condition, comparable to a new one. Main components-with 70/80% of life residue. Machine in security conditions.