

SALES REPORT: DYNAPAC CC1300#KDYNA - SN CHA020### - Year 2017

This Report is a summary about observations came out from technical inspection done by our specialised technician.

GENERAL CONDITIONS

MACHINE DATA

Model: CC1300#KDYNA

Family: UTILITY COMPACTORS

Serial Number: CHA020###

Order Number MU/MM: MU00737913

Construction year: 2017

Hour meter: 886

General residual conditions Truck/Tyres: %

Machine main application:

Machine availability date : 31/10/2024

Location: Coming in

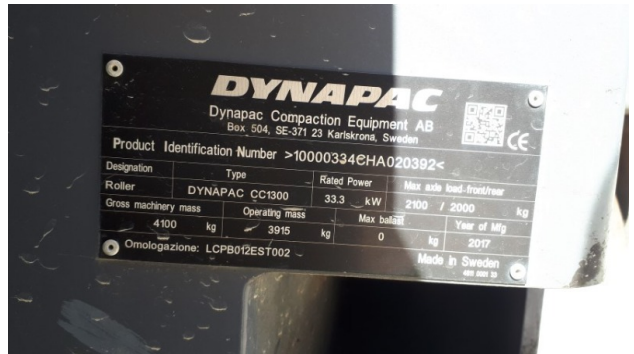
Rating: ★★☆☆☆

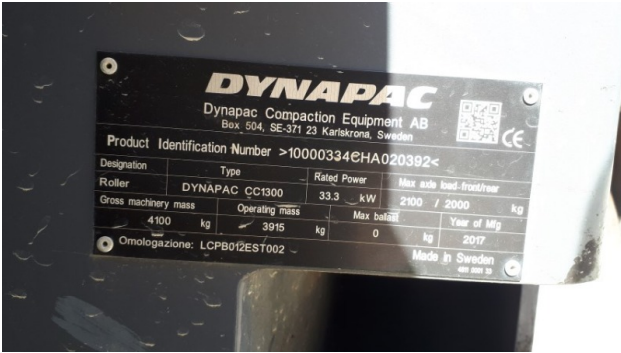
Public price: Ask

MACHINE CONFIGURATION

● Machine type Standard - GP ● Quick Coupler System ● Steering type 40 ● Tyres type undefined ● CE Mark ● CE Certificate ● Use and maintenance manual ● Registration book & Licence plate Registration book & Licence plate aft697 ● AVAILABLE FROM FEBRUARY 2025

MACHINE PHOTOS





GENERAL APPEARANCE

- ◆ Painting Conditions: Good

- ◆ Counterweight conditions: Good

- ◆ Frame/Bumper conditions: Good

- ◆ Door conditions: Good

- Note da inserire : LAVAGGIO IMPIANTO IDRAULICO EFFETTUATO DA NOSTRA OFFICINA DI ROMA

- ◆ Central joint: Good

Functionality

Engine & electrical system functionality

- ◆ In quale stato è stata visionata la macchina: Accesa e provata per ispezione

- ◆ Engine working conditions: Good

- ◆ Engine with oil leaks: No

- If Yes, where : macchina con motore idraulico REVISIONATO da cgt Roma

- ◆ Engine presents blowby: No

- ◆ Engine present smokiness: No

-
- ◆ Radiator conditions: Good
 - ◆ Batteries/Cables conditions: Good
 - ◆ Presence of electrical fault: No
-

Functionality drive and rotation

- ◆ Hydraulic pump conditions: Good
 - ◆ Engine travel conditions: Good
 - ◆ Final drives conditions: Good
 - ◆ Gear switches go/back conditions: Good
 - ◆ Annotazioni sul: controllati tutti i componenti idraulici da nostra officina Roma
-

Linkage Group

- ◆ Hydraulic conditions linkage group: Buono
 - ◆ Flexible pipes conditions: Good
-

Cabin and Tools

- ◆ Conditions internal cabin: Good
 - ◆ Lights & Windshield present issues: Present and not functioning
-

Check 81/2008



- ◆ Condizioni freni: Buono

- ◆ Condizioni freno di Stazionamento: Buono

- ◆ Lights conditions: Broken or Chipped - needs repair

- ◆ Condizioni specchietti: Mancanti

- ◆ Stepladders & handrails conditions: Good

- ◆ Flashing conditions: Not functioning

- ◆ Safety belt conditions: Present and expired

- ◆ Controls been modified: No

- ◆ Presence of Exclusion Control Lever: Yes

- If No, are control levers protected to accidental functionality? : Yes

- ◆ Are Tools Functional & Visible with tag: Yes

- ◆ Canopy completed and comes with keys and bolt: Yes

- ◆ All Pipes with no damage e/o scratches: Yes

- ◆ Batteries box shielded: Yes

- ◆ Acoustic alarm works properly: Yes

Valutazione Macchina

★ Non Funzionante (NF)

La macchina si presenta non funzionante e/o in pessime condizioni. Macchina da demolire o venduta per parti di ricambio. La macchina NON è in sicurezza.

★★ Scarso (S)

La macchina è in cattivo stato e può presentare visibili rotture e/o crepe su tutta la struttura. Per il suo ottimale funzionamento, o per essere avviata, può necessitare di importanti riparazioni a carro/gomme, perdite d'olio, riverniciatura completa, componenti principali, messa in sicurezza.

★★★ Buono (B)

La macchina si presenta in buone condizioni sia estetiche che di funzionamento. Carro/Gomme hanno orientativamente un 30/40% di vita residua. La macchina non presenta importanti rotture e/o perdite d'olio. La macchina è pronta per lavorare "AS IS" anche se potrebbe richiedere piccoli interventi di riparazione/migliorie. La macchina è in sicurezza.

★★★★ Molto Buono (O)

La macchina si presenta in condizioni molto buone, non ha più di 5 anni e/o 5000 ore lavorate. Non presenta problemi strutturali e può essere preparata esteticamente per renderla "quasi nuova". Componenti principali non inferiori al 50/60% di vita residua, macchina in sicurezza.

★★★★★ Eccellente (E)

La macchina si presenta in condizioni eccellenti, prossime al nuovo. Componenti principali non inferiori al 70/80% di vita residua, macchina in sicurezza.

Machine Rating

★ Not Working (NW)

Machine not operational or in really bad conditions. Machine has to be demolished or sold as a "parts". Machine not in security conditions.

★★ Poor (P)

Machine in bad condition, got visible cracks or repairable structural issues. Machine is operational but, in order to work properly, it may need significant repairs to tyres/truck, paint, pins and/or bushings, power train, hydraulic system.

★★★ Good (G)

Machine is in good condition and operational, with no structural issues. Tyres/Track around 30/40% of residual life. No relevant hydraulic leaks, pins/bushings with normal wear, frame may need to be repainted. Machine is ready to work "AS IS", it may need minor repairs for a better performance. Machine in security conditions or easy to be in safety condition.

★★★★ Very Good (VG)

Machine is in very good conditions, with no more of 5 years and/or 5000 working hours. No structural issues; painting condition is almost perfect. May need an easy check to be sold as "Brand New". Main components with 50/60% of life residue. Machine in security conditions.

★★★★★ Excellent (E)

Machine is in excellent condition, comparable to a new one. Main components-with 70/80% of life residue. Machine in security conditions.