

SALES REPORT: CATERPILLAR M318CMH - SN H2F00### - Year 2006

This Report is a summary about observations comes out from technical inspection done by our specialised technician.

GENERAL CONDITIONS

MACHINE DATA

Model: M318CMH

Family: WHEEL EXCAVATOR

Serial Number: H2F00###

Order Number MU/MM: MU00745461

Construction year: 2006

Hour meter: 26185

General residual conditions Truck/Tyres: 20 %

Machine main application: Industry - not corrosive field

Machine availability date : 28/10/2024

Location: Coming in

Rating: ★☆☆☆☆

Public price: Ask

MACHINE CONFIGURATION

● Machine type Material Handling MH ● Boom type Mono boom ● Boom check valves ● Stick check valves ● Tyres type Twin Wheel ● General Tyres Residual 20 10.00 20 . ● Stabilizers 4 Stabilizers ● Cabin type Hydraulic lift ● Cabin fog Front superiore ● Air Conditioning system Operation Yes ● Auto lube system Operation Yes ● Product Link ● 22000 Kg ● ● CE Mark ● CE Certificate ● EPA Family Number: 5PKXL06.0VK1 ● Use and maintenance manual ● Registration book & Licence plate No Registration book & Licence plate ● AVAILABLE FROM DECEMBER 2024

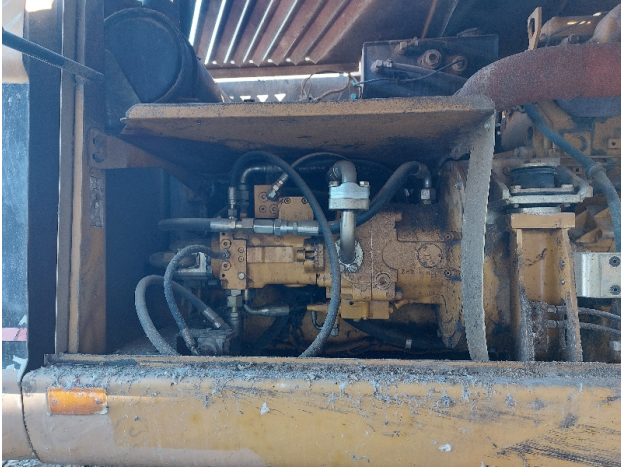
MACHINE PHOTOS

◆ Il contaore e':

Rotto













GENERAL APPEARANCE

- ◆ Painting Conditions Poor

- ◆ Counterweight conditions Poor

- Needs painting? : Yes

- ◆ Frame / Bumper conditions Good

Tyres

- ◆ Front Tyres residual 20

- ◆ Front Tyres residual 20

Right side

- ◆ Door conditions (right) Good

◆ Spar conditions (right)	Poor
---------------------------	------

Left side

◆ Door conditions (left)	Good
--------------------------	------

◆ Door conditions (left)	Good
--------------------------	------

◆ Spar conditions (left)	Poor
--------------------------	------

◆ Hood / Armor bottom conditions	Present and bash
----------------------------------	------------------

Functionality

Engine & electrical system functionality

◆ In quale stato è stata visionata la macchina:	Non funzionante
---	-----------------

◆ Engine functionality conditions	Not working
-----------------------------------	-------------

◆ Engine with oil leaks	Yes
-------------------------	-----

If Yes, where : Acqua nell'olio, motore in blocco.

◆ Engine presents blowby	No
--------------------------	----

◆ Oil-Water presence	Yes
----------------------	-----

◆ Engine present smokiness	No
----------------------------	----

◆ Radiator conditions	Good
-----------------------	------

◆ Starter motor conditions	NA - Not applicable
----------------------------	---------------------

◆ Batteries/Cables conditions	NA - Not applicable
-------------------------------	---------------------

◆ Presence of electrical fault	No
--------------------------------	----

Functionality drive and rotation

◆ Hydraulic pump conditions	Good
◆ Engine rotation conditions	Good
◆ Engine travel conditions	Good
◆ Final drives conditions	Good
◆ Hydraulic joint conditions	Good Presence of leaks : No
◆ Hydraulic joint conditions	Good Presence of leaks : No
◆ Tenuta idraulica braccio (il braccio cala):	No

Linkage Group

◆ Hydraulic conditions linkage group (Boom is lowering?)	Yes
◆ Boom structure	Good Presence of welding/cracks : No
◆ Stick structure	Good Presence of welding/cracks : No
◆ Flexible pipes conditions	Good
◆ Boom cylinders conditions	Good Leaks : No
◆ Stick cylinder conditions	Good Leaks : No
◆ Bucket / Grapple cylinder conditions	NA - Not applicable

Leaks : No

◆ Pins & Bushings boom conditions	Good
◆ Pins & Bushings stick conditions	Good
◆ Pins & Bushings bucket conditions	Good
◆ Bucket / Grapple & Get conditions	NA - Not applicable
◆ Quick Coupler conditions	NA - Not applicable
◆ Funzionamento Impianto Ingrassaggio Automatico:	Sì

Cabin and Tools

◆ Conditions internal cabin	Good
◆ Flashing presents issues	No
◆ Lights & Windshield present issues	Presents and functioning
◆ Air conditioning & Filters conditions	Presents and functioning
◆ Back & side camera conditions	Not functioning

Check 81/2008

◆ Condizioni freni:	NA - Non Applicabile
◆ Condizioni freno di Stazionamento:	NA - Non Funzionante
◆ Glass conditions	Excellent - no needs repair
◆ Lights conditions	Excellent - no needs repair
◆ Rear view mirrors conditions	Excellent - no needs repair



◆ Stepladders & handrails conditions	Good
◆ Cameras conditions	Broken or Chipped - needs repair
◆ Flashing conditions	Not functioning
◆ Safety belt conditions	Present and valid
◆ Controls been modified	No
◆ Presence of Exclusion Control Lever	Yes
	If No, are control levers protected to accidental functionality? : Yes
◆ Are Tools Functional & Visible with tag	Yes
◆ Canopy completed and comes with keys and bolt	Yes
◆ All Pipes with no damage e/o scratches	Yes
◆ Batteries box shielded	Yes
◆ Acoustic alarm works properly	Yes
◆ Boardwalk presence	Present and bashee

Valutazione Macchina

★ Non Funzionante (NF)

La macchina si presenta non funzionante e/o in pessime condizioni. Macchina da demolire o venduta per parti di ricambio. La macchina NON è in sicurezza.

★★ Scarso (S)

La macchina è in cattivo stato e può presentare visibili rotture e/o crepe su tutta la struttura. Per il suo ottimale funzionamento, o per essere avviata, può necessitare di importanti riparazioni a carro/gomme, perdite d'olio, riverniciatura completa, componenti principali, messa in sicurezza.

★★★ Buono (B)

La macchina si presenta in buone condizioni sia estetiche che di funzionamento. Carro/Gomme hanno orientativamente un 30/40% di vita residua. La macchina non presenta importanti rotture e/o perdite d'olio. La macchina è pronta per lavorare "AS IS" anche se potrebbe richiedere piccoli interventi di riparazione/migliorie. La macchina è in sicurezza.

★★★★ Molto Buono (O)

La macchina si presenta in condizioni molto buone, non ha più di 5 anni e/o 5000 ore lavorate. Non presenta problemi strutturali e può essere preparata esteticamente per renderla "quasi nuova". Componenti principali non inferiori al 50/60% di vita residua, macchina in sicurezza.

★★★★★ Eccellente (E)

La macchina si presenta in condizioni eccellenti, prossime al nuovo. Componenti principali non inferiori al 70/80% di vita residua, macchina in sicurezza.

Machine Rating

★ Not Working (NW)

Machine not operational or in really bad conditions. Machine has to be demolished or sold as a "parts". Machine not in security conditions.

★★ Poor (P)

Machine in bad condition, got visible cracks or repairable structural issues. Machine is operational but, in order to work properly, it may need significant repairs to tyres/truck, paint, pins and/or bushings, power train, hydraulic system.

★★★ Good (G)

Machine is in good condition and operational, with no structural issues. Tyres/Track around 30/40% of residual life. No relevant hydraulic leaks, pins/bushings with normal wear, frame may need to be repainted. Machine is ready to work "AS IS", it may need minor repairs for a better performance. Machine in security conditions or easy to be in safety condition.

★★★★ Very Good (VG)

Machine is in very good conditions, with no more of 5 years and/or 5000 working hours. No structural issues; painting condition is almost perfect. May need an easy check to be sold as "Brand New". Main components with 50/60% of life residue. Machine in security conditions.

★★★★★ Excellent (E)

Machine is in excellent condition, comparable to a new one. Main components-with 70/80% of life residue. Machine in security conditions.