

## SALES REPORT: CATERPILLAR 289D3 - SN BT900### - Year 2021

This Report is a summary about observations came out from technical inspection done by our specialised technician.

### GENERAL CONDITIONS

---

### MACHINE DATA

---

**Model:** 289D3

**Family:** COMPACT TRACK LOADER

**Serial Number:** BT900###

**Order Number MU/MM:** MU00746912

**Construction year:** 2021

**Hour meter:** 1936

**General residual conditions Truck/Tyres:** 80 %

**Machine main application:** Basic application

**Machine availability date :** 12/11/2024

**Location:** Coming in

**Rating:** ★★☆☆☆

**Public price:** Ask

### MACHINE CONFIGURATION

---

- Machine type Wasting configuration
- Rops Close
- Bucket Standard Get Cover Blade
- Plant features
- General Truck Residual 80%
- Air Conditioning system
- Product Link
- Antitheft alarm
- 4770 Kg
- CE Mark
- CE Certificate
- EPA Tag
- Use and maintenance manual
- undefined

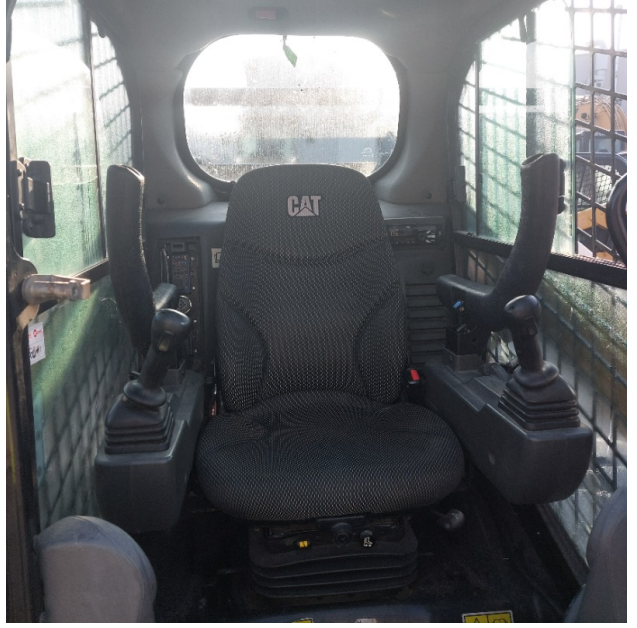
MACHINE PHOTOS

◆ Il contaore e':

Funzionante









## GENERAL APPEARANCE

◆ Painting Conditions	Good
◆ Counterweight conditions	Good
	Needs painting? : No
◆ Frame/Bumper conditions	Good
◆ Door conditions (left)	Good

## Truck

◆ Front Idler residual	80
◆ Front drive sprocket residual:	70
◆ Bottom rollers residual:	70
◆ Grousers residual:	100
◆ Chains residual:	100

## Functionality

---

### Engine & electrical system functionality

---

- ◆ In quale stato è stata visionata la macchina: Accesa e provata per ispezione

---

- ◆ Engine working conditions: Good

---

- ◆ Engine with oil leaks: No

---

- ◆ Engine presents blowby: No

---

- ◆ Oil-Water presence: No

---

- ◆ Engine present smokiness: No

---

- ◆ Radiator conditions: Good

---

- ◆ Starter motor conditions: Good

---

- ◆ Batteries/Cables conditions: Good

---

- ◆ Presence of electrical fault: No

---

### Functionality drive and rotation

---

- ◆ Hydraulic pump conditions: Good

---

- ◆ Brakes and steering cluthces conditions: Good

---

- ◆ Engine travel conditions: Good

---

- ◆ Final drives conditions: Good

---

### Linkage Group

◆ Tenuta idraulica braccio (il braccio cala): No

◆ Boom structure: Good

Photos

Presence of welding/cracks : No



◆ Flexible pipes conditions: Good

◆ Pins & Bushings boom conditions: Good

◆ Pins & Bushings stick conditions: Good

◆ Pins & Bushings bucket conditions: Good

◆ Bucket/Get conditions Good

◆ Funzionamento Impianto Ingrassaggio Automatico: No

## Cabin and Tools

◆ Conditions internal cabin: Good

◆ Lights & Windshield present issues\_ Presents and functioning

◆ Air conditioning & Filters conditions: Presents and functioning

---

◆ Back & side camera conditions: Present and functioning

---

### Check 81/2008

---

◆ Glasses conditions: Excellent - no needs repair

---

◆ Lights conditions: Excellent - no needs repair

---

◆ Condizioni specchietti: Eccellente - non necessita riparazione

---

◆ Stepladders & handrails conditions: Good

---

◆ Cameras conditions: Excellent - no needs repair

---

◆ Flashing conditions: Present and functioning

---

◆ Safety belt conditions: Present and valid

---

◆ Controls been modified: No

---

◆ Presence of Exclusion Control Lever: Yes

---

◆ Are Tools Functional & Visible with tag: Yes

---

◆ Canopy completed and comes with keys and bolt: Yes

---

◆ All Pipes with no damage e/o scratches: Yes

---

◆ Batteries box shielded: Yes

---

◆ Acoustic alarm works properly: Yes

---

◆ Boardwalk presence: Present and functioning

---



## Valutazione Macchina

### ★ Non Funzionante (NF)

La macchina si presenta non funzionante e/o in pessime condizioni. Macchina da demolire o venduta per parti di ricambio. La macchina NON è in sicurezza.

### ★★ Scarso (S)

La macchina è in cattivo stato e può presentare visibili rotture e/o crepe su tutta la struttura. Per il suo ottimale funzionamento, o per essere avviata, può necessitare di importanti riparazioni a carro/gomme, perdite d'olio, riverniciatura completa, componenti principali, messa in sicurezza.

### ★★★ Buono (B)

La macchina si presenta in buone condizioni sia estetiche che di funzionamento. Carro/Gomme hanno orientativamente un 30/40% di vita residua. La macchina non presenta importanti rotture e/o perdite d'olio. La macchina è pronta per lavorare "AS IS" anche se potrebbe richiedere piccoli interventi di riparazione/migliorie. La macchina è in sicurezza.

### ★★★★ Molto Buono (O)

La macchina si presenta in condizioni molto buone, non ha più di 5 anni e/o 5000 ore lavorate. Non presenta problemi strutturali e può essere preparata esteticamente per renderla "quasi nuova". Componenti principali non inferiori al 50/60% di vita residua, macchina in sicurezza.

### ★★★★★ Eccellente (E)

La macchina si presenta in condizioni eccellenti, prossime al nuovo. Componenti principali non inferiori al 70/80% di vita residua, macchina in sicurezza.

## Machine Rating

### ★ Not Working (NW)

Machine not operational or in really bad conditions. Machine has to be demolished or sold as a "parts". Machine not in security conditions.

### ★★ Poor (P)

Machine in bad condition, got visible cracks or repairable structural issues. Machine is operational but, in order to work properly, it may need significant repairs to tyres/truck, paint, pins and/or bushings, power train, hydraulic system.

### ★★★ Good (G)

Machine is in good condition and operational, with no structural issues. Tyres/Track around 30/40% of residual life. No relevant hydraulic leaks, pins/bushings with normal wear, frame may need to be repainted. Machine is ready to work "AS IS", it may need minor repairs for a better performance. Machine in security conditions or easy to be in safety condition.

### ★★★★ Very Good (VG)

Machine is in very good conditions, with no more of 5 years and/or 5000 working hours. No structural issues; painting condition is almost perfect. May need an easy check to be sold as "Brand New". Main components with 50/60% of life residue. Machine in security conditions.

### ★★★★★ Excellent (E)

Machine is in excellent condition, comparable to a new one. Main components-with 70/80% of life residue. Machine in security conditions.