

## SALES REPORT: CATERPILLAR 336 NG - SN JHD10### - Year 2021

This Report is a summary about observations came out from technical inspection done by our specialised technician.

### GENERAL CONDITIONS

---

#### MACHINE DATA

---

**Model:** 336 NG

**Family:** MEDIUM EXCAVATOR

**Serial Number:** JHD10###

**Order Number MU/MM:** MU00748367

**Construction year:** 2021

**Hour meter:** 3908

**General residual conditions Truck/Tyres:** 80 %

**Machine main application:** Basic application

**Machine availability date :** 31/12/2024

**Location:** Coming in

**Rating:** ★★★★★

**Public price:** Ask

#### MACHINE CONFIGURATION

---

- Machine type Standard
- Boom type Mono boom
- Boom check valves
- Stick check valves
- Plant features Versatility impianto dedicato all'attacco rapido
- Quick coupler Hydraulic Cat cw45s
- Bucket Rock/Stone 140 Get Teeth 1
- Truck type Fixed
- General Truck Residual 80%
- Cabin type Fixed standard
- Cabin fog Front superiore
- Air Conditioning system
- Auto Lube system
- Product Link
- 37400 Kg
- CE Mark
- CE Certificate
- Use and maintenance manual
- LCPXL09.3NTF EPA

MACHINE PHOTOS

◆ Il contaore è:

Funzionante







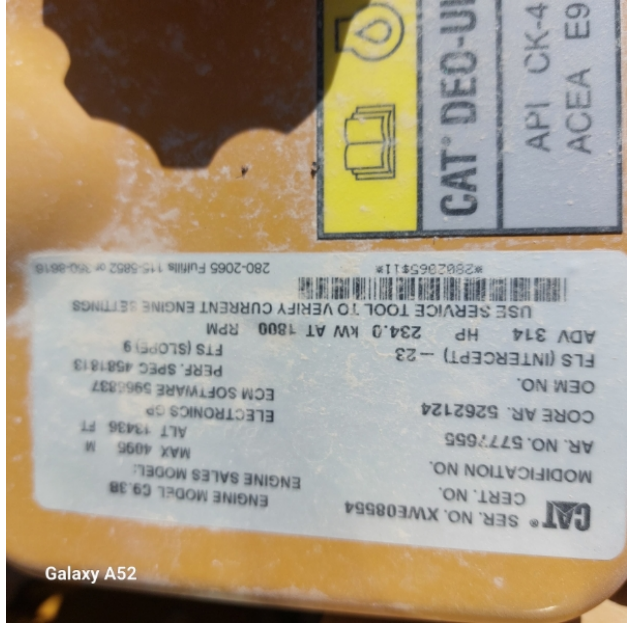








Galaxy A52



Galaxy A52

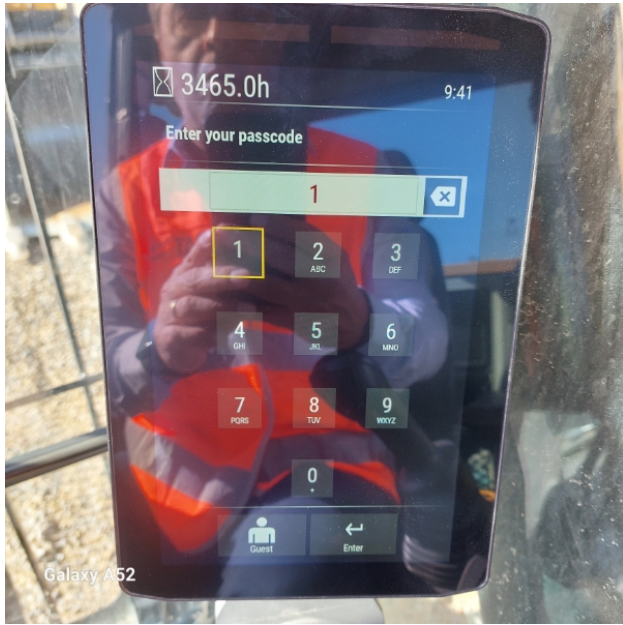


Galaxy A52



Galaxy A52









Galaxy A52



Galaxy A52



Galaxy A52



Galaxy A52





**GENERAL APPEARANCE**

◆ Painting Conditions	Excellent
◆ Counterweight conditions:	Good
◆ Frame/Bumper conditions:	Very Good

**TRUCK**



- ◆ Sprockets residual: 80

---

- ◆ Front idler wheel residual: 80

---

- ◆ Rollers upper/bottom residual: 80

---

- ◆ Chains residual: 80

---

### Right side

---

- ◆ Door conditions (right): Very good

---

- ◆ Spar conditions: Good

---

### Left side

---

- ◆ Door conditions (left): Very good

---

- ◆ Door conditions (left): Very good

---

- ◆ Spar conditions (left): Good

---

- ◆ Hood/Armor bottom conditions: Present and intact

---

## Functionality

---

### Engine & electrical system functionality

---

- ◆ In quale stato è stata visionata la macchina: Accesa e funzionante "al lavoro"

---

- ◆ Engine working conditions: Excellent

---

- ◆ Engine with oil leaks: No

---

- ◆ Engine presents blowby: No





---

◆ Oil-Water presence: No

---

◆ Engine present smokiness: No

---

◆ Radiator conditions: Very good

---

◆ Starter motor conditions: Very good

---

◆ Batteries/Cables conditions: Very good

---

◆ Presence of electrical fault: No

---

**Functionality drive and rotation**

---

◆ Hydraulic pump conditions: Very good

---

◆ Engine rotation conditions: Very good

---

◆ Engine travel conditions: Very good

---

◆ Final drives conditions: Very good

---

◆ Hydraulic joint conditions: Very good

Presence of leaks : No

---

◆ Hydraulic joint conditions: Very good

Presence of leaks : No

---

**Linkage Group**

---

◆ Hydraulic conditions linkage group: No

---

◆ Boom structure: Very good

Presence of welding/cracks : No

---

◆ Stick structure: Very good

Presence of welding/cracks : No



◆ Flexible pipes conditions:	Very good
◆ Boom cylinders conditions:	Very good Leaks : No
◆ Stick cylinder conditions:	Very good Leaks : No
◆ Bucket cylinder conditions:	Very good Leaks : No
◆ Pins & Bushings boom conditions:	Very good
◆ Pins & Bushings stick conditions:	Very good
◆ Pins & Bushings bucket conditions:	Very good
◆ Bucket & Get conditions:	Very good
◆ Quick Coupler conditions:	Very good
◆ Auto Lube working conditions:	SI

## Cabin and Tools

◆ Conditions internal cabin:	Excellent
◆ Flashing presents issues:	No
◆ Lights & Windshield present issues:	Presents and functioning
◆ Air conditioning is working:	Presente e funzionante
◆ Back & side camera conditions:	Present and functioning

◆ Glass conditions:	Excellent - no needs repair
◆ Lights conditions:	Excellent - no needs repair
◆ Rear view mirrors conditions:	Excellent - no needs repair
◆ Stepladders & handrails conditions:	Very good
◆ Cameras conditions:	Excellent - no needs repair
◆ Flashing conditions:	Not functioning
◆ Safety belt conditions:	Present and valid
◆ Controls been modified:	No
◆ Presence of Exclusion Control Lever:	Yes
◆ Are Tools Functional & Visible with tag:	Yes
◆ Canopy completed and comes with keys and bolt:	Yes
◆ All Pipes with no damage e/o scratches:	Yes
◆ Batteries box shielded:	Yes
◆ Acoustic alarm works properly:	Yes
◆ Boardwalk presence:	Present and functioning
◆ Annotazioni su:	Macchina seminuova..



## Valutazione Macchina

### ★ Non Funzionante (NF)

La macchina si presenta non funzionante e/o in pessime condizioni. Macchina da demolire o venduta per parti di ricambio. La macchina NON è in sicurezza.

### ★★ Scarso (S)

La macchina è in cattivo stato e può presentare visibili rotture e/o crepe su tutta la struttura. Per il suo ottimale funzionamento, o per essere avviata, può necessitare di importanti riparazioni a carro/gomme, perdite d'olio, riverniciatura completa, componenti principali, messa in sicurezza.

### ★★★ Buono (B)

La macchina si presenta in buone condizioni sia estetiche che di funzionamento.

Carro/Gomme hanno orientativamente un 30/40% di vita residua. La macchina non presenta importanti rotture e/o perdite d'olio. La macchina è pronta per lavorare "AS IS" anche se potrebbe richiedere piccoli interventi di riparazione/migliorie. La macchina è in sicurezza.

### ★★★★ Molto Buono (O)

La macchina si presenta in condizioni molto buone, non ha più di 5 anni e/o 5000 ore lavorate.

Non presenta problemi strutturali e può essere preparata esteticamente per renderla "quasi nuova".

Componenti principali non inferiori al 50/60% di vita residua, macchina in sicurezza.

### ★★★★★ Eccellente (E)

La macchina si presenta in condizioni eccellenti, prossime al nuovo.

Componenti principali non inferiori al 70/80% di vita residua, macchina in sicurezza.

## Machine Rating

### ★ Not Working (NW)

Machine not operational or in really bad conditions. Machine has to be demolished or sold as a "parts". Machine not in security conditions.

### ★★ Poor (P)

Machine in bad condition, got visible cracks or repairable structural issues. Machine is operational but, in order to work properly, it may need significant repairs to tyres/truck, paint, pins and/or bushings, power train, hydraulic system.

### ★★★ Good (G)

Machine is in good condition and operational, with no structural issues.

Tyres/Track around 30/40% of residual life. No relevant hydraulic leaks, pins/bushings with normal wear, frame may need to be repainted.

Machine is ready to work "AS IS", it may need minor repairs for a better performance. Machine in security conditions or easy to be in safety condition.

### ★★★★ Very Good (VG)

Machine is in very good conditions, with no more of 5 years and/or 5000 working hours.

No structural issues; painting condition is almost perfect. May need an easy check to be sold as "Brand New".

Main components with 50/60% of life residue. Machine in security conditions.

### ★★★★★ Excellent (E)

Machine is in excellent condition, comparable to a new one.

Main components-with 70/80% of life residue. Machine in security conditions.