

SALES REPORT: CATERPILLAR 926M - SN LTE07### - Year 2019

This Report is a summary about observations came out from technical inspection done by our specialised technician.

GENERAL CONDITIONS

MACHINE DATA

Model: 926M

Family: SMALL WHEEL LOADER

Serial Number: LTE07###

Order Number MU/MM: MU00750188

Construction year: 2019

Hour meter: 5002

General residual conditions Truck/Tyres: 60 %

Machine main application: Basic application

Machine availability date : 09/01/2025

Location: Coming in

Rating: ★★☆☆☆

Public price: 135.000 €

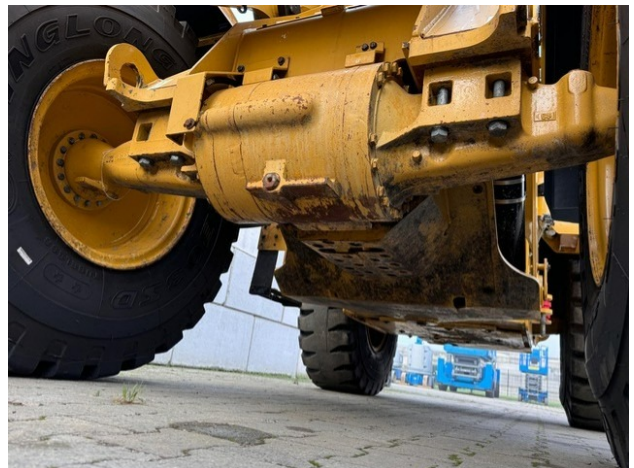
MACHINE CONFIGURATION

• Machine type Standard - GP • Steering type Command steering • Differential Type Standard • Transmission type Automatic • Quick Coupler System • Quick coupler Mechanic • Bucket Standard Benna nuova con denti CAT Get Teeth • Tyres type Standard • General Tyres Residual 60 • Rops Close • Cabin fog Front laterale/portiera • Air Conditioning system • Product Link • 12789 Kg • CE Mark • EPA Tag (KPKXL07.0BN1 EPA) • Use and maintenance manual • Registration book & Licence plate undefined

MACHINE PHOTOS

◆ Il contaore e':

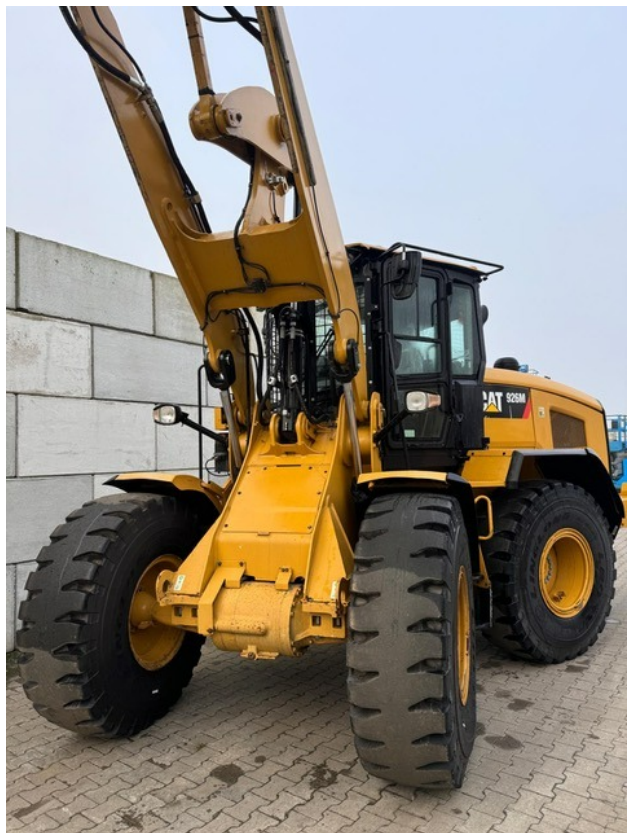
Funzionante



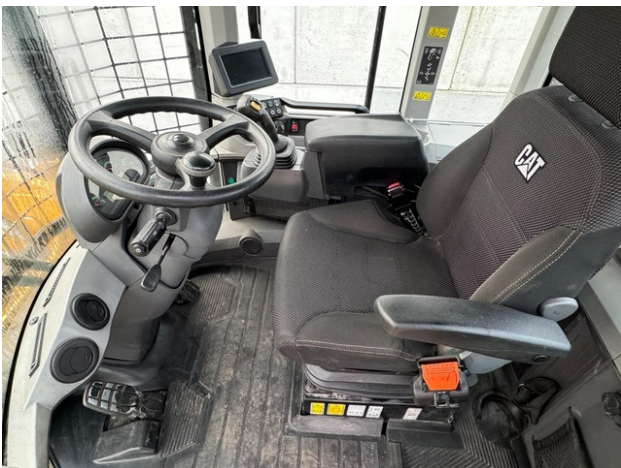
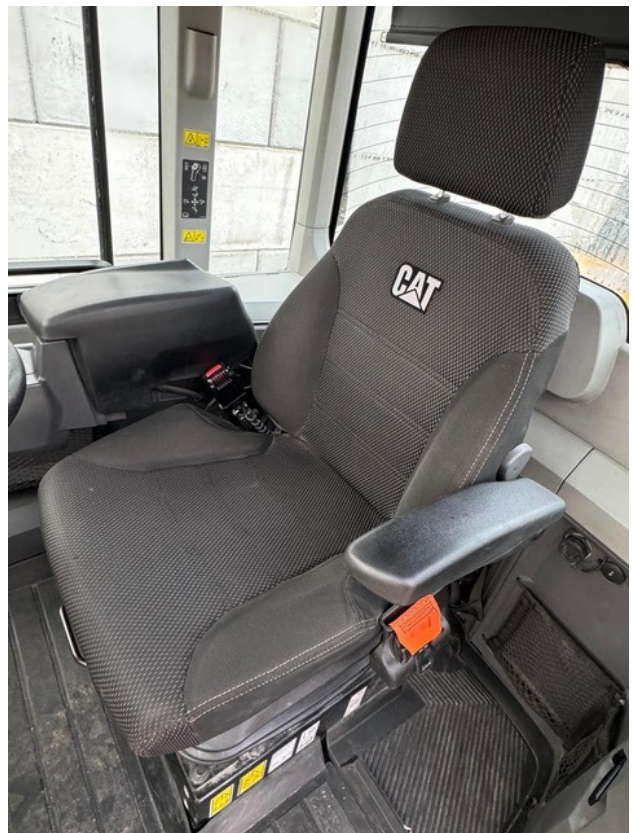














GENERAL APPEARANCE

◆ Painting Conditions:	Poor
◆ Counterweight conditions:	Good
	Needs painting? : No
◆ Frame/Bumper conditions:	Poor
◆ Door conditions:	Good

◆ Central joint: Good

◆ Fender/Mudguard conditions: Poor

Tyres

◆ Front Tyres residual: 60

◆ Front Tyres residual: 60

Functionality

Engine & electrical system functionality

◆ In quale stato è stata visionata la macchina: Accesa e funzionante "al lavoro"

◆ Engine working conditions: Good

◆ Engine with oil leaks: No

◆ Engine presents blowby: No

◆ Oil-Water presence: No

◆ Engine present smokiness: No

◆ Radiator conditions: Good

◆ Starter motor conditions: Good

◆ Batteries/Cables conditions: Good

◆ Presence of electrical fault: No

Functionality drive and rotation

- ◆ Hydraulic pump conditions: Good

- ◆ Engine travel conditions: Good

- ◆ Final drives conditions: Good

- ◆ Hydraulic joint conditions: Good

Presence of leaks : No

- ◆ Gear switches go/back conditions: Good

Engine & electrical system functionality

- ◆ Engine working conditions: Good

- ◆ Radiator conditions: Good

- ◆ Starter motor conditions: Good

Linkage Group

- ◆ Tenuta idraulica braccio (il braccio cala): No

- ◆ Boom structure: Good

Presence of welding/cracks : No

- ◆ Flexible pipes conditions: Good

- ◆ Lifting cylinders conditions: Good

- ◆ Bucket cylinder conditions: Good

- ◆ Pins & Bushings bucket conditions: Good

◆ Bucket & Get conditions: Good

◆ Quick Coupler conditions: Good

◆ Funzionamento Impianto Ingrassaggio Automatico: No

Cabin and Tools

◆ Conditions internal cabin: Good

◆ Lights & Windshield present issues: Present and not functioning

◆ Air conditioning & Filters conditions: Not functioning

◆ Back & side camera conditions: Present and functioning

Check 81/2008

◆ Condizioni freni: Buono

◆ Condizioni freno di Stazionamento: Buono

◆ Glass conditions: Excellent - no needs repair

◆ Lights conditions: Excellent - no needs repair

◆ Condizioni specchietti: Eccellente - non necessita riparazione

◆ Stepladders & handrails conditions: Poor

◆ Cameras conditions: Broken or Chipped - needs repair

◆ Flashing conditions: Present and functioning

◆ Safety belt conditions: Present and expired



- ◆ Controls been modified: No

- ◆ Presence of Exclusion Control Lever: No

If No, are control levers protected to accidental functionality? : No

- ◆ Are Tools Functional & Visible with tag: No

- ◆ Canopy completed and comes with keys and bolt: No

- ◆ All Pipes with no damage e/o scratches: No

- ◆ Batteries box shielded: No

- ◆ Acoustic alarm works properly: No

- ◆ Boardwalk presence: Present and functioning

Valutazione Macchina

★ Non Funzionante (NF)

La macchina si presenta non funzionante e/o in pessime condizioni. Macchina da demolire o venduta per parti di ricambio. La macchina NON è in sicurezza.

★★ Scarso (S)

La macchina è in cattivo stato e può presentare visibili rotture e/o crepe su tutta la struttura. Per il suo ottimale funzionamento, o per essere avviata, può necessitare di importanti riparazioni a carro/gomme, perdite d'olio, riverniciatura completa, componenti principali, messa in sicurezza.

★★★ Buono (B)

La macchina si presenta in buone condizioni sia estetiche che di funzionamento.

Carro/Gomme hanno orientativamente un 30/40% di vita residua. La macchina non presenta importanti rotture e/o perdite d'olio. La macchina è pronta per lavorare "AS IS" anche se potrebbe richiedere piccoli interventi di riparazione/migliorie. La macchina è in sicurezza.

★★★★ Molto Buono (O)

La macchina si presenta in condizioni molto buone, non ha più di 5 anni e/o 5000 ore lavorate.

Non presenta problemi strutturali e può essere preparata esteticamente per renderla "quasi nuova".

Componenti principali non inferiori al 50/60% di vita residua, macchina in sicurezza.

★★★★★ Eccellente (E)

La macchina si presenta in condizioni eccellenti, prossime al nuovo.

Componenti principali non inferiori al 70/80% di vita residua, macchina in sicurezza.

Machine Rating

★ Not Working (NW)

Machine not operational or in really bad conditions. Machine has to be demolished or sold as a "parts". Machine not in security conditions.

★★ Poor (P)

Machine in bad condition, got visible cracks or repairable structural issues. Machine is operational but, in order to work properly, it may need significant repairs to tyres/truck, paint, pins and/or bushings, power train, hydraulic system.

★★★ Good (G)

Machine is in good condition and operational, with no structural issues.

Tyres/Track around 30/40% of residual life. No relevant hydraulic leaks, pins/bushings with normal wear, frame may need to be repainted.

Machine is ready to work "AS IS", it may need minor repairs for a better performance. Machine in security conditions or easy to be in safety condition.

★★★★ Very Good (VG)

Machine is in very good conditions, with no more of 5 years and/or 5000 working hours.

No structural issues; painting condition is almost perfect. May need an easy check to be sold as "Brand New".

Main components with 50/60% of life residue. Machine in security conditions.

★★★★★ Excellent (E)

Machine is in excellent condition, comparable to a new one.

Main components-with 70/80% of life residue. Machine in security conditions.