

SALES REPORT: BOMAG BW211D-3#KBOMA - SN 101582401159 - Year 2006

This Report is a summary about observations came out from technical inspection done by our specialised technician.

GENERAL CONDITIONS

MACHINE DATA

Model: BW211D-3#KBOMA

Family: COMPACTOR

Serial Number: 101582401159

Order Number MU/MM: MU00750804

Construction year: 2006

Hour meter: 633

General residual conditions Truck/Tyres: %

Machine main application:

Location: Stock Milano Usato

Rating: ★★☆☆☆

Public price: Ask

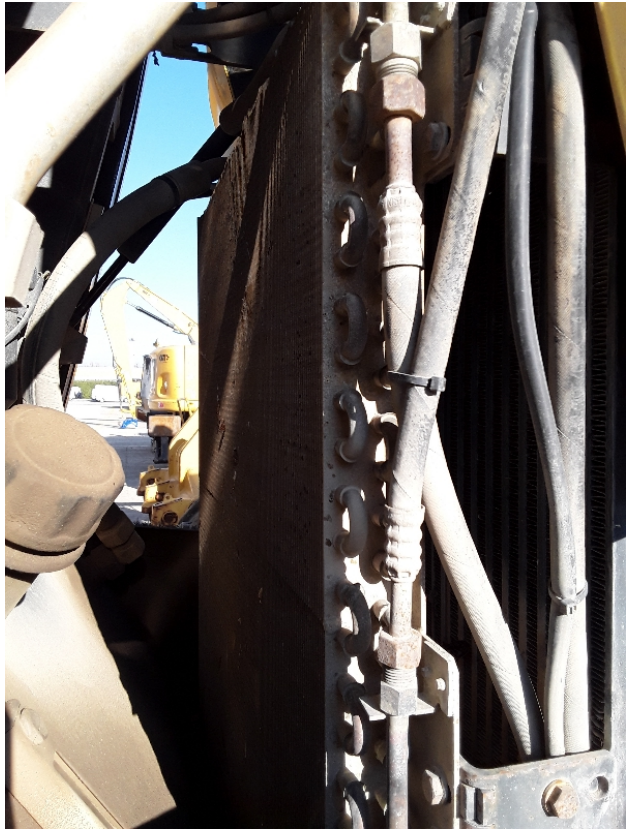
MACHINE CONFIGURATION

● Machine type Standard - GP ● Quick Coupler System undefined ● Steering type 110 ● Tyres type Standard ● General Tyres Residual 50 Mitas ● Air Conditioning system ● 10950 Kg ● CE Mark ● CE Certificate ● EPA Tag undefined ● Use and maintenance manual ● Registration book & Licence plate undefined

MACHINE PHOTOS











GENERAL APPEARANCE

| | |
|-------------------------------|----------------------|
| ◆ Painting Conditions: | Poor |
| ◆ Counterweight conditions: | Good |
| ◆ Frame/Bumper conditions: | Good |
| ◆ Door conditions: | Good |
| ◆ Central joint: | Good |
| ◆ Fender/Mudguard conditions: | NA - Non Applicabile |

Functionality

Engine & electrical system functionality

◆ In quale stato è stata visionata la macchina: Accesa e provata per ispezione

◆ Engine working conditions: Good

◆ Engine with oil leaks: No

◆ Engine presents blowby: No

◆ Engine present smokiness: No

◆ Radiator conditions: Good

◆ Batteries/Cables conditions: Excellent

◆ Presence of electrical fault: No

Functionality drive and rotation

◆ Hydraulic pump conditions: Good

◆ Engine travel conditions: NA - Not applicable

◆ Final drives conditions: NA - Not applicable

◆ Gear switches go/back conditions: Good

Linkage Group

◆ Hydraulic conditions linkage group: Buono

◆ Flexible pipes conditions: Good

◆ Funzionamento Impianto Ingrassaggio Automatico: No

Cabin and Tools

- ◆ Conditions internal cabin: Poor

- ◆ Lights & Windshield present issues: Presents and functioning

- ◆ Air contidioning & Filters conditions: Presents and functioning

- ◆ Back & side camera conditions: Not functioning

Check 81/2008

- ◆ Condizioni freni: Buono

- ◆ Condizioni freno di Stazionamento: Buono

- ◆ Glass conditions: Excellent - no needs repair

- ◆ Lights conditions: Excellent - no needs repair

- ◆ Condizioni specchietti: Eccellente - non necessita riparazione

- ◆ Stepladders & handrails conditions: Good

- ◆ Cameras conditions: Broken or Chipped - needs repair

- ◆ Flashing conditions: Present and functioning

- ◆ Safety belt conditions: Present and expired

- ◆ Controls been modified: No

- ◆ Presence of Exclusion Control Lever: No

- If No, are control levers protected to accidental funcionality? : Yes

- ◆ Are Tools Functional & Visible with tag: Yes



- ◆ Canopy completed and comes with keys and bolt: Yes

- ◆ All Pipes with no damage e/o scratches: Yes

- ◆ Batteries box shielded: Yes

- ◆ Acoustic alarm works properly: Yes

- ◆ Boardwalk presence: Not present

Valutazione Macchina

★ Non Funzionante (NF)

La macchina si presenta non funzionante e/o in pessime condizioni. Macchina da demolire o venduta per parti di ricambio. La macchina NON è in sicurezza.

★★ Scarso (S)

La macchina è in cattivo stato e può presentare visibili rotture e/o crepe su tutta la struttura. Per il suo ottimale funzionamento, o per essere avviata, può necessitare di importanti riparazioni a carro/gomme, perdite d'olio, riverniciatura completa, componenti principali, messa in sicurezza.

★★★ Buono (B)

La macchina si presenta in buone condizioni sia estetiche che di funzionamento. Carro/Gomme hanno orientativamente un 30/40% di vita residua. La macchina non presenta importanti rotture e/o perdite d'olio. La macchina è pronta per lavorare "AS IS" anche se potrebbe richiedere piccoli interventi di riparazione/migliorie. La macchina è in sicurezza.

★★★★ Molto Buono (O)

La macchina si presenta in condizioni molto buone, non ha più di 5 anni e/o 5000 ore lavorate. Non presenta problemi strutturali e può essere preparata esteticamente per renderla "quasi nuova". Componenti principali non inferiori al 50/60% di vita residua, macchina in sicurezza.

★★★★★ Eccellente (E)

La macchina si presenta in condizioni eccellenti, prossime al nuovo. Componenti principali non inferiori al 70/80% di vita residua, macchina in sicurezza.

Machine Rating

★ Not Working (NW)

Machine not operational or in really bad conditions. Machine has to be demolished or sold as a "parts". Machine not in security conditions.

★★ Poor (P)

Machine in bad condition, got visible cracks or repairable structural issues. Machine is operational but, in order to work properly, it may need significant repairs to tyres/truck, paint, pins and/or bushings, power train, hydraulic system.

★★★ Good (G)

Machine is in good condition and operational, with no structural issues. Tyres/Track around 30/40% of residual life. No relevant hydraulic leaks, pins/bushings with normal wear, frame may need to be repainted. Machine is ready to work "AS IS", it may need minor repairs for a better performance. Machine in security conditions or easy to be in safety condition.

★★★★ Very Good (VG)

Machine is in very good conditions, with no more of 5 years and/or 5000 working hours. No structural issues; painting condition is almost perfect. May need an easy check to be sold as "Brand New". Main components with 50/60% of life residue. Machine in security conditions.

★★★★★ Excellent (E)

Machine is in excellent condition, comparable to a new one. Main components-with 70/80% of life residue. Machine in security conditions.