

## SALES REPORT: DOOSAN - DAEWOO DX530 - SN 1010### - Year 2022

This Report is a summary about observations came out from technical inspection done by our specialised technician.

### GENERAL CONDITIONS

---

#### MACHINE DATA

---

**Model:** DX530

**Family:** MEDIUM EXCAVATOR

**Serial Number:** 1010###

**Order Number MU/MM:** MU00752174

**Construction year:** 2022

**Hour meter:** 2470

**General residual conditions Truck/Tyres:** 70 %

**Machine main application:** Basic application

**Machine availability date :** 01/12/2024

**Location:** Coming in

**Rating:** ★★★★★☆

**Public price:** Ask

#### MACHINE CONFIGURATION

---

● Machine type Standard ● Boom type Mono boom ● Boom check valves ● Stick check valves ● Plant features Hammer line impianto dedicato all'attacco rapido ● Quick coupler Hydraulic GEITH attacco attrezzatura interasse tra perni 590mm larghezza int. 470mm diametro perni 120mm ● Bucket Heavy duty 1600 Get undefined ● Truck type Mechanic extendible ● General Truck Residual 70% ● Cabin type Fixed standard ● Cabin fog Upper ● Air Conditioning system ● Auto Lube system ● 52700 Kg ● CE Mark ● CE Certificate ● Use and maintenance manual ● AVAILABLE FROM MARCH 2025

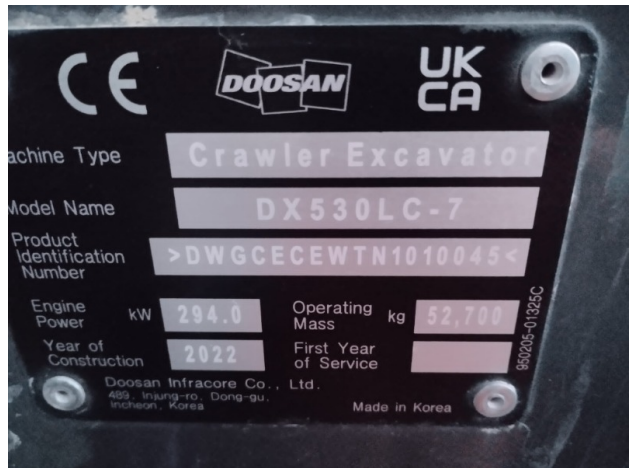
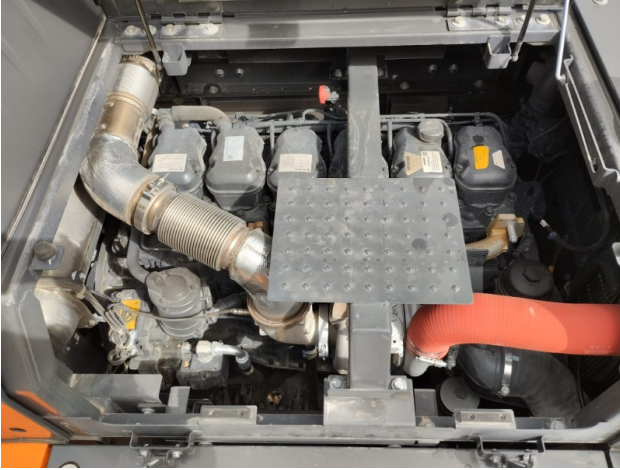
MACHINE PHOTOS

◆ Il contaore è:

Funzionante









**GENERAL APPEARANCE**

---

- ◆ Painting Conditions Very Good

---

- ◆ Counterweight conditions: Very good

---

- ◆ Frame/Bumper conditions: Very Good

---

**TRUCK**

---

- ◆ Sprockets residual: 70

---

- ◆ Front idler wheel residual: 70

---

- ◆ Rollers upper/bottom residual: 70

---

- ◆ Chains residual: 70

---

**Right side**

---

- ◆ Door conditions (right): Very good

---

- ◆ Spar conditions: Very good

---

**Left side**

---

- ◆ Door conditions (left): Very good

---

- ◆ Door conditions (left): Very good

---

- ◆ Spar conditions (left): Very good

---

- ◆ Hood/Armor bottom conditions: Present and intact

---

**Functionality**

## Engine & electrical system functionality

---

- ◆ In quale stato è stata visionata la macchina: Accesa e funzionante "al lavoro"

---

- ◆ Engine working conditions: Very good

---

- ◆ Engine with oil leaks: No

---

- ◆ Engine presents blowby: No

---

- ◆ Oil-Water presence: No

---

- ◆ Engine present smokiness: No

---

- ◆ Radiator conditions: Very good

---

- ◆ Starter motor conditions: Very good

---

- ◆ Batteries/Cables conditions: Very good

---

- ◆ Presence of electrical fault: No

---

## Functionality drive and rotation

---

- ◆ Hydraulic pump conditions: Very good

---

- ◆ Engine rotation conditions: Very good

---

- ◆ Engine travel conditions: Very good

---

- ◆ Final drives conditions: Very good

---

- ◆ Hydraulic joint conditions: Very good

---

- Presence of leaks : No

---

- ◆ Hydraulic joint conditions: Very good



Presence of leaks : No

---

### Linkage Group

---

- ◆ Hydraulic conditions linkage group: No

---

  - ◆ Boom structure: Very good  
Presence of welding/cracks : No

---

  - ◆ Stick structure: Very good  
Presence of welding/cracks : No

---

  - ◆ Flexible pipes conditions: Very good

---

  - ◆ Boom cylinders conditions: Very good  
Leaks : No

---

  - ◆ Stick cylinder conditions: Very good  
Leaks : No

---

  - ◆ Bucket cylinder conditions: Very good  
Leaks : No

---

  - ◆ Pins & Bushings boom conditions: Very good

---

  - ◆ Pins & Bushings stick conditions: Very good

---

  - ◆ Pins & Bushings bucket conditions: Very good

---

  - ◆ Bucket & Get conditions: Very good

---

  - ◆ Quick Coupler conditions: Very good

---

  - ◆ Auto Lube working conditions: SI
- 

### Cabin and Tools

---

- ◆ Conditions internal cabin: Very good

◆ Flashing presents issues:	No
◆ Lights & Windshield present issues:	Presents and functioning
◆ Air conditioning is working:	Presente e funzionante
◆ Back & side camera conditions:	Present and functioning
◆ Annotazioni su:	telecamera 360°

### Check 81/2008

◆ Glass conditions:	Excellent - no needs repair
◆ Lights conditions:	Excellent - no needs repair
◆ Rear view mirrors conditions:	Excellent - no needs repair
◆ Stepladders & handrails conditions:	Very good
◆ Cameras conditions:	Excellent - no needs repair
◆ Flashing conditions:	Not functioning
◆ Safety belt conditions:	Present and valid
◆ Controls been modified:	No
◆ Presence of Exclusion Control Lever:	Yes
◆ Are Tools Functional & Visible with tag:	Yes
◆ Canopy completed and comes with keys and bolt:	Yes
◆ All Pipes with no damage e/o scratches:	Yes
◆ Batteries box shielded:	Yes





◆ Acoustic alarm works properly: Yes

---

◆ Boardwalk presence: Present and functioning

---

## Valutazione Macchina

### ★ Non Funzionante (NF)

La macchina si presenta non funzionante e/o in pessime condizioni. Macchina da demolire o venduta per parti di ricambio. La macchina NON è in sicurezza.

### ★★ Scarso (S)

La macchina è in cattivo stato e può presentare visibili rotture e/o crepe su tutta la struttura. Per il suo ottimale funzionamento, o per essere avviata, può necessitare di importanti riparazioni a carro/gomme, perdite d'olio, riverniciatura completa, componenti principali, messa in sicurezza.

### ★★★ Buono (B)

La macchina si presenta in buone condizioni sia estetiche che di funzionamento. Carro/Gomme hanno orientativamente un 30/40% di vita residua. La macchina non presenta importanti rotture e/o perdite d'olio. La macchina è pronta per lavorare "AS IS" anche se potrebbe richiedere piccoli interventi di riparazione/migliorie. La macchina è in sicurezza.

### ★★★★ Molto Buono (O)

La macchina si presenta in condizioni molto buone, non ha più di 5 anni e/o 5000 ore lavorate. Non presenta problemi strutturali e può essere preparata esteticamente per renderla "quasi nuova". Componenti principali non inferiori al 50/60% di vita residua, macchina in sicurezza.

### ★★★★★ Eccellente (E)

La macchina si presenta in condizioni eccellenti, prossime al nuovo. Componenti principali non inferiori al 70/80% di vita residua, macchina in sicurezza.

## Machine Rating

### ★ Not Working (NW)

Machine not operational or in really bad conditions. Machine has to be demolished or sold as a "parts". Machine not in security conditions.

### ★★ Poor (P)

Machine in bad condition, got visible cracks or repairable structural issues. Machine is operational but, in order to work properly, it may need significant repairs to tyres/truck, paint, pins and/or bushings, power train, hydraulic system.

### ★★★ Good (G)

Machine is in good condition and operational, with no structural issues. Tyres/Track around 30/40% of residual life. No relevant hydraulic leaks, pins/bushings with normal wear, frame may need to be repainted. Machine is ready to work "AS IS", it may need minor repairs for a better performance. Machine in security conditions or easy to be in safety condition.

### ★★★★ Very Good (VG)

Machine is in very good conditions, with no more of 5 years and/or 5000 working hours. No structural issues; painting condition is almost perfect. May need an easy check to be sold as "Brand New". Main components with 50/60% of life residue. Machine in security conditions.

### ★★★★★ Excellent (E)

Machine is in excellent condition, comparable to a new one. Main components-with 70/80% of life residue. Machine in security conditions.