

SALES REPORT: CATERPILLAR 323F - SN YEC10029 - Year 2017

This Report is a summary about observations came out from technical inspection done by our specialised technician.

GENERAL CONDITIONS

MACHINE DATA

Model: 323F

Family: MEDIUM EXCAVATOR

Serial Number: YEC10029

Order Number MU/MM: MU00755027

Construction year: 2017

Hour meter: 9155

General residual conditions Truck/Tyres: 50 %

Machine main application: Basic application

Location: Stock CAGLIARI

Rating: ★★☆☆☆

Public price: Ask

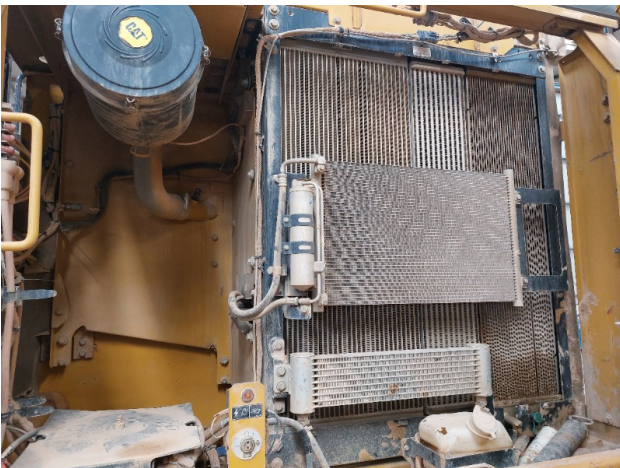
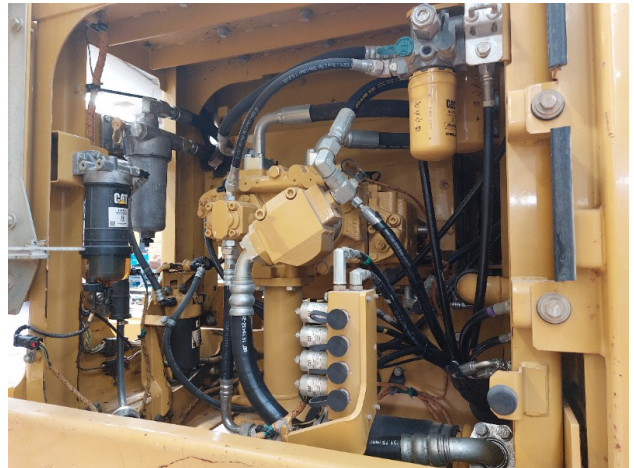
MACHINE CONFIGURATION

• Machine type Standard • Boom type Mono boom • Boom check valves • Stick check valves • Plant features Versatility linea drenaggio • Bucket Standard 1,2 Get Teeth Get undefined • Truck type Fixed • General Truck Residual 50% • Cabin type Fixed standard • Air Conditioning system • Product Link • 23000 Kg • CE Mark • CE Certificate • Use and maintenance manual

MACHINE PHOTOS

◆ Il contaore è:

Funzionante







GENERAL APPEARANCE

◆ Painting Conditions	Poor
<hr/>	
◆ Counterweight conditions:	Good
<hr/>	
◆ Frame/Bumper conditions:	Good

TRUCK

◆ Sprockets residual:	50
<hr/>	
◆ Front idler wheel residual:	50
<hr/>	
◆ Rollers upper/bottom residual:	50
<hr/>	
◆ Chains residual:	50

Right side

- ◆ Door conditions (right): Poor

- ◆ Spar conditions: Good

Left side

- ◆ Door conditions (left): Good

- ◆ Door conditions (left): Good

- ◆ Spar conditions (left): Poor

- ◆ Hood/Armor bottom conditions: Present and intact

Functionality

Engine & electrical system functionality

- ◆ In quale stato è stata visionata la macchina: Spenta e ferma

- ◆ Engine working conditions: Not working

- ◆ Engine with oil leaks: No
If Yes, where : macchina in off.na con rottura motore - prev. € 20.000.

- ◆ Engine presents blowby: No

- ◆ Oil-Water presence: No

- ◆ Engine present smokiness: No

- ◆ Radiator conditions: Good



◆ Starter motor conditions: Good

◆ Batteries/Cables conditions: Good

◆ Presence of electrical fault: No

SE SI, AGGIUNGERE DETTAGLI : macchina non provata ma proveniente da lavoro quotidiano

Functionality drive and rotation

◆ Hydraulic pump conditions: Good

◆ Engine rotation conditions: Good

◆ Engine travel conditions: Good

◆ Final drives conditions: Good

◆ Hydraulic joint conditions: Good

Presence of leaks : No

◆ Hydraulic joint conditions: Poor

Presence of leaks : Yes

Linkage Group

◆ Hydraulic conditions linkage group: Yes

◆ Boom structure: Good

Presence of welding/cracks : No

◆ Stick structure: Good

Presence of welding/cracks : No

◆ Flexible pipes conditions: Good

◆ Boom cylinders conditions: Good

Leaks : No



- ◆ Stick cylinder conditions: Good
Leaks : No

- ◆ Bucket cylinder conditions: Good
Leaks : No

- ◆ Pins & Bushings boom conditions: Poor

- ◆ Pins & Bushings stick conditions: Poor

- ◆ Pins & Bushings bucket conditions: Poor

- ◆ Bucket & Get conditions: Poor

- ◆ Quick Coupler conditions: Good

- ◆ Auto Lube working conditions: No

Cabin and Tools

- ◆ Conditions internal cabin: Good

- ◆ Flashing presents issues: No

- ◆ Lights & Windshield present issues: Presents and functioning

- ◆ Air conditioning is working: Non funzionante

- ◆ Back & side camera conditions: Present and functioning

Check 81/2008

- ◆ Glass conditions: Excellent - no needs repair

- ◆ Lights conditions: Excellent - no needs repair

- ◆ Rear view mirrors conditions: Broken or Chipped - needs repair



◆ Stepladders & handrails conditions:	Poor
◆ Cameras conditions:	Excellent - no needs repair
◆ Flashing conditions:	Not functioning
◆ Safety belt conditions:	Present and expired
◆ Controls been modified:	No
◆ Presence of Exclusion Control Lever:	Yes
◆ Are Tools Functional & Visible with tag:	Yes
◆ Canopy completed and comes with keys and bolt:	Yes
◆ All Pipes with no damage e/o scratches:	Yes
◆ Batteries box shielded:	Yes
◆ Acoustic alarm works properly:	Yes
◆ Boardwalk presence:	Present and functioning

Valutazione Macchina

★ Non Funzionante (NF)

La macchina si presenta non funzionante e/o in pessime condizioni. Macchina da demolire o venduta per parti di ricambio. La macchina NON è in sicurezza.

★★ Scarso (S)

La macchina è in cattivo stato e può presentare visibili rotture e/o crepe su tutta la struttura. Per il suo ottimale funzionamento, o per essere avviata, può necessitare di importanti riparazioni a carro/gomme, perdite d'olio, riverniciatura completa, componenti principali, messa in sicurezza.

★★★ Buono (B)

La macchina si presenta in buone condizioni sia estetiche che di funzionamento. Carro/Gomme hanno orientativamente un 30/40% di vita residua. La macchina non presenta importanti rotture e/o perdite d'olio. La macchina è pronta per lavorare "AS IS" anche se potrebbe richiedere piccoli interventi di riparazione/migliorie. La macchina è in sicurezza.

★★★★ Molto Buono (O)

La macchina si presenta in condizioni molto buone, non ha più di 5 anni e/o 5000 ore lavorate. Non presenta problemi strutturali e può essere preparata esteticamente per renderla "quasi nuova". Componenti principali non inferiori al 50/60% di vita residua, macchina in sicurezza.

★★★★★ Eccellente (E)

La macchina si presenta in condizioni eccellenti, prossime al nuovo. Componenti principali non inferiori al 70/80% di vita residua, macchina in sicurezza.

Machine Rating

★ Not Working (NW)

Machine not operational or in really bad conditions. Machine has to be demolished or sold as a "parts". Machine not in security conditions.

★★ Poor (P)

Machine in bad condition, got visible cracks or repairable structural issues. Machine is operational but, in order to work properly, it may need significant repairs to tyres/truck, paint, pins and/or bushings, power train, hydraulic system.

★★★ Good (G)

Machine is in good condition and operational, with no structural issues. Tyres/Track around 30/40% of residual life. No relevant hydraulic leaks, pins/bushings with normal wear, frame may need to be repainted. Machine is ready to work "AS IS", it may need minor repairs for a better performance. Machine in security conditions or easy to be in safety condition.

★★★★ Very Good (VG)

Machine is in very good conditions, with no more of 5 years and/or 5000 working hours. No structural issues; painting condition is almost perfect. May need an easy check to be sold as "Brand New". Main components with 50/60% of life residue. Machine in security conditions.

★★★★★ Excellent (E)

Machine is in excellent condition, comparable to a new one. Main components-with 70/80% of life residue. Machine in security conditions.