

SALES REPORT: CATERPILLAR 246C ZDC - SN JAY09103 - Year 2013

This Report is a summary about observations came out from technical inspection done by our specialised technician.

GENERAL CONDITIONS

MACHINE DATA

Model: 246C ZDC

Family: SKID STEER LOADER

Serial Number: JAY09103

Order Number MU/MM: MU00756005

Construction year: 2013

Hour meter: 3075

General residual conditions Truck/Tyres: 60 %

Machine main application: Basic application

Location: Stock Off.Buniotto

Rating: ★★☆☆☆

Public price: Ask

MACHINE CONFIGURATION

• Machine type Wasting configuration • Rops Close • Bucket Standard 0,40/1676mm. Get Cover Blade • Plant features • General Truck Residual 60% • Air Conditioning system • 3438 Kg • CE Mark • CE Certificate • Use and maintenance manual • undefined AJD787 FRESA SIMEX ESCLUSA

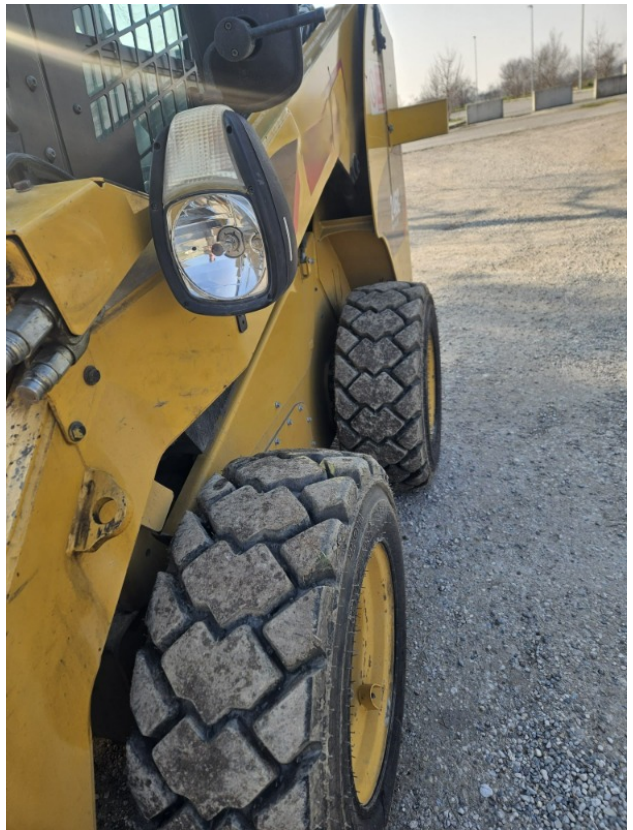
MACHINE PHOTOS

◆ Il contaore e':

Funzionante











GENERAL APPEARANCE

| | |
|----------------------------|----------------------|
| ◆ Painting Conditions | Good |
| ◆ Counterweight conditions | Good |
| | Needs painting? : No |
| ◆ Frame/Bumper conditions | Good |



◆ Door conditions (left) Good

◆ Other notes Pistoncino porta anteriore da sostituire

Truck

◆ Front Idler residual 60

◆ Front drive sprocket residual: 60

Functionality

Engine & electrical system functionality

◆ In quale stato è stata visionata la macchina: Accesa e provata per ispezione

◆ Engine working conditions: Good

◆ Engine with oil leaks: No

◆ Engine presents blowby: No

◆ Oil-Water presence: No

◆ Engine present smokiness: No

◆ Radiator conditions: Good

◆ Starter motor conditions: Good

◆ Batteries/Cables conditions: Poor

◆ Presence of electrical fault: Sì

If present, add details : FARI NON FUNZIONANTI

Functionality drive and rotation

- ◆ Hydraulic pump conditions: Good

- ◆ Brakes and steering clutches conditions: Good

- ◆ Engine travel conditions: Good

- ◆ Final drives conditions: Good

Linkage Group

- ◆ Tenuta idraulica braccio (il braccio cala): No

- ◆ Boom structure: Good

Photos

Presence of welding/cracks : No



- ◆ Flexible pipes conditions: Good

| | |
|---|------|
| ◆ Pins & Bushings boom conditions: | Good |
| ◆ Pins & Bushings stick conditions: | Good |
| ◆ Pins & Bushings bucket conditions: | Good |
| ◆ Bucket/Get conditions | Good |
| ◆ Funzionamento Impianto Ingrassaggio Automatico: | No |

Cabin and Tools

| | |
|--|-----------------------------|
| ◆ Conditions internal cabin: | Good |
| ◆ Lights & Windshield present issues_ | Present and not functioning |
| ◆ Air contidioning & Filters conditions: | Present and not functioning |
| ◆ Back & side camera conditions: | Not functioning |

Check 81/2008

| | |
|---------------------------------------|--|
| ◆ Glasses conditions: | Excellent - no needs repair |
| ◆ Lights conditions: | Broken or Chipped - needs repair |
| ◆ Condizioni specchietti: | Rotto o Scheggiato - necessita riparazione |
| ◆ Stepladders & handrails conditions: | Good |
| ◆ Cameras conditions: | Non presente |
| ◆ Flashing conditions: | Not functioning |
| ◆ Safety belt conditions: | Present and expired |



- ◆ Controls been modified: No

- ◆ Presence of Exclusion Control Lever: Yes
If No, are control levers protected to accidental functionality? : Yes

- ◆ Are Tools Functional & Visible with tag: Yes

- ◆ Canopy completed and comes with keys and bolt: Yes

- ◆ All Pipes with no damage e/o scratches: No

- ◆ Batteries box shielded: Yes

- ◆ Acoustic alarm works properly: No

- ◆ Boardwalk presence: Present and functioning

Valutazione Macchina

★ Non Funzionante (NF)

La macchina si presenta non funzionante e/o in pessime condizioni. Macchina da demolire o venduta per parti di ricambio. La macchina NON è in sicurezza.

★★ Scarso (S)

La macchina è in cattivo stato e può presentare visibili rotture e/o crepe su tutta la struttura. Per il suo ottimale funzionamento, o per essere avviata, può necessitare di importanti riparazioni a carro/gomme, perdite d'olio, riverniciatura completa, componenti principali, messa in sicurezza.

★★★ Buono (B)

La macchina si presenta in buone condizioni sia estetiche che di funzionamento. Carro/Gomme hanno orientativamente un 30/40% di vita residua. La macchina non presenta importanti rotture e/o perdite d'olio. La macchina è pronta per lavorare "AS IS" anche se potrebbe richiedere piccoli interventi di riparazione/migliorie. La macchina è in sicurezza.

★★★★ Molto Buono (O)

La macchina si presenta in condizioni molto buone, non ha più di 5 anni e/o 5000 ore lavorate. Non presenta problemi strutturali e può essere preparata esteticamente per renderla "quasi nuova". Componenti principali non inferiori al 50/60% di vita residua, macchina in sicurezza.

★★★★★ Eccellente (E)

La macchina si presenta in condizioni eccellenti, prossime al nuovo. Componenti principali non inferiori al 70/80% di vita residua, macchina in sicurezza.

Machine Rating

★ Not Working (NW)

Machine not operational or in really bad conditions. Machine has to be demolished or sold as a "parts". Machine not in security conditions.

★★ Poor (P)

Machine in bad condition, got visible cracks or repairable structural issues. Machine is operational but, in order to work properly, it may need significant repairs to tyres/truck, paint, pins and/or bushings, power train, hydraulic system.

★★★ Good (G)

Machine is in good condition and operational, with no structural issues. Tyres/Track around 30/40% of residual life. No relevant hydraulic leaks, pins/bushings with normal wear, frame may need to be repainted. Machine is ready to work "AS IS", it may need minor repairs for a better performance. Machine in security conditions or easy to be in safety condition.

★★★★ Very Good (VG)

Machine is in very good conditions, with no more of 5 years and/or 5000 working hours. No structural issues; painting condition is almost perfect. May need an easy check to be sold as "Brand New". Main components with 50/60% of life residue. Machine in security conditions.

★★★★★ Excellent (E)

Machine is in excellent condition, comparable to a new one. Main components-with 70/80% of life residue. Machine in security conditions.