

## SALES REPORT: POWERSCREEN WARR1200 - SN 95491 - Year 2017

This Report is a summary about observations came out from technical inspection done by our specialised technician.

### GENERAL CONDITIONS

---

#### MACHINE DATA

---

**Model:** WARR1200

**Family:** SCREENING PLANTS

**Serial Number:** 95491

**Order Number MU/MM:** MU00756237

**Construction year:** 2017

**Hour meter:** 1423

**General residual conditions Truck/Tyres:** %

**Machine main application:** Basic application

**Location:** Stock ROMA

**Rating:** ★★☆☆☆

**Public price:** Ask

#### MACHINE CONFIGURATION

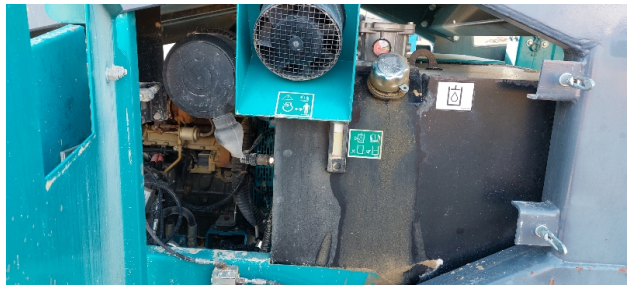
---

● Machine type Standard ● ● ● CE Mark ● CE Certificate ● Il cliente riferisce essere macchina in ordine, funzionante, con usure compatibili con le ori attuali.

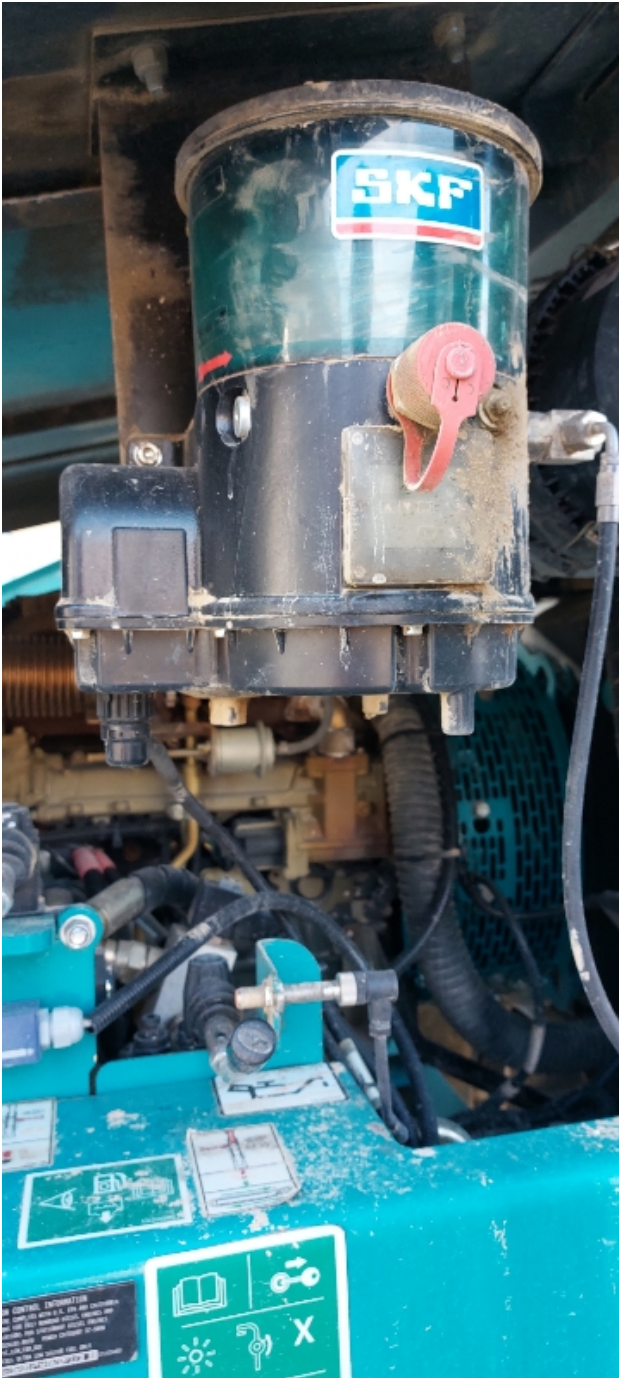
MACHINE PHOTOS

---









**GENERAL APPEARANCE**

◆ Telaio:	Buono
◆ Painting Conditions	Good
◆ Tramoggia:	Buono

## RETI

---

- ◆ Spar conditions: Quadra  
Luce mm : .Conditiona : Good

---

- ◆ Rete 2° piano: Antintasante  
Luce mm : .Condizioni : Buono

---

- ◆ Rete 3° piano (se presente): NA - Non Applicabile  
Luce mm : .

## NASTRI

---

- ◆ Nastro principale (tappeto, raschiatori, rulli): Buono

---

- ◆ Nastri laterali: Buono

---

- ◆ Deferrizzatore: NA - Non Applicabile

---

- ◆ Sistema abbattimento polveri: NA - Non Applicabile

## CARRO

---

- ◆ Condizioni generali carro Buono

## Functionality

---

- ◆ In quale stato è stata visionata la macchina: Spenta e ferma

## Engine & electrical system functionality

---

- ◆ Engine working conditions: Good



- ◆ Engine with oil leaks: No

---

- ◆ Engine presents blowby: No

---

- ◆ Engine present smokiness: No

---

- ◆ Radiator conditions: Good

---

- ◆ Starter motor conditions: Good

---

- ◆ Batteries/Cables conditions: Good

---

- ◆ Presence of electrical fault: Not present

---

### Functionality drive and rotation

---

- ◆ Hydraulic pump conditions: Good

---

- ◆ Engine travel conditions: Good

---

### Linkage Group

---

- ◆ Boom structure: Good  
Presenza di perdite? Se si, specificare da dove: : no

---

- ◆ Stick structure: Good  
Presenza di perdite? Se si, specificare da dove: : no

---

### Check 81/2008

---

- ◆ Lights conditions: Excellent - no needs repair

---

- ◆ Condizioni specchietti: Mancanti

---

- ◆ Stepladders & handrails conditions: Good

---



◆ Cameras conditions:	Broken or Chipped - needs repair
◆ Flashing conditions:	Not functioning
◆ Controls been modified:	No
◆ Presence of Exclusion Control Lever:	Yes
◆ Are Tools Functional & Visible with tag:	Yes
◆ Canopy completed and comes with keys and bolt:	Yes
◆ All Pipes with no damage e/o scratches:	Yes
◆ Batteries box shielded:	Yes
◆ Acoustic alarm works properly:	No
◆ Boardwalk presence:	Present and functioning

## Valutazione Macchina

### ★ Non Funzionante (NF)

La macchina si presenta non funzionante e/o in pessime condizioni. Macchina da demolire o venduta per parti di ricambio. La macchina NON è in sicurezza.

### ★★ Scarso (S)

La macchina è in cattivo stato e può presentare visibili rotture e/o crepe su tutta la struttura. Per il suo ottimale funzionamento, o per essere avviata, può necessitare di importanti riparazioni a carro/gomme, perdite d'olio, riverniciatura completa, componenti principali, messa in sicurezza.

### ★★★ Buono (B)

La macchina si presenta in buone condizioni sia estetiche che di funzionamento. Carro/Gomme hanno orientativamente un 30/40% di vita residua. La macchina non presenta importanti rotture e/o perdite d'olio. La macchina è pronta per lavorare "AS IS" anche se potrebbe richiedere piccoli interventi di riparazione/migliorie. La macchina è in sicurezza.

### ★★★★ Molto Buono (O)

La macchina si presenta in condizioni molto buone, non ha più di 5 anni e/o 5000 ore lavorate. Non presenta problemi strutturali e può essere preparata esteticamente per renderla "quasi nuova". Componenti principali non inferiori al 50/60% di vita residua, macchina in sicurezza.

### ★★★★★ Eccellente (E)

La macchina si presenta in condizioni eccellenti, prossime al nuovo. Componenti principali non inferiori al 70/80% di vita residua, macchina in sicurezza.

## Machine Rating

### ★ Not Working (NW)

Machine not operational or in really bad conditions. Machine has to be demolished or sold as a "parts". Machine not in security conditions.

### ★★ Poor (P)

Machine in bad condition, got visible cracks or repairable structural issues. Machine is operational but, in order to work properly, it may need significant repairs to tyres/truck, paint, pins and/or bushings, power train, hydraulic system.

### ★★★ Good (G)

Machine is in good condition and operational, with no structural issues. Tyres/Track around 30/40% of residual life. No relevant hydraulic leaks, pins/bushings with normal wear, frame may need to be repainted. Machine is ready to work "AS IS", it may need minor repairs for a better performance. Machine in security conditions or easy to be in safety condition.

### ★★★★ Very Good (VG)

Machine is in very good conditions, with no more of 5 years and/or 5000 working hours. No structural issues; painting condition is almost perfect. May need an easy check to be sold as "Brand New". Main components with 50/60% of life residue. Machine in security conditions.

### ★★★★★ Excellent (E)

Machine is in excellent condition, comparable to a new one. Main components-with 70/80% of life residue. Machine in security conditions.