

## SALES REPORT: CATERPILLAR 318F - SN HCP20### - Year 2019

This Report is a summary about observations came out from technical inspection done by our specialised technician.

### GENERAL CONDITIONS

---

#### MACHINE DATA

---

**Model:** 318F

**Family:** SMALL EXCAVATOR

**Serial Number:** HCP20###

**Order Number MU/MM:** MU00758300

**Construction year:** 2019

**Hour meter:** 3130

**General residual conditions Truck/Tyres:** 70 %

**Machine main application:** Basic application

**Machine availability date :** 17/03/2025

**Location:** Coming in

**Rating:** ★★☆☆☆

**Public price:** Ask

#### MACHINE CONFIGURATION

---

- Machine type Standard
- Boom type Mono boom
- Boom check valves
- Stick check valves
- Plant features Versatility impianto dedicato all'attacco rapido
- Quick coupler Hydraulic cat cw 30 s
- Bucket Standard mm 1200
- Get undefined
- Truck type Fixed
- General Truck Residual 70%
- Cabin type Fixed standard
- Cabin fog Front
- Air Conditioning system
- Product Link
- 17000 Kg
- CE Mark
- CE Certificate
- Use and maintenance manual

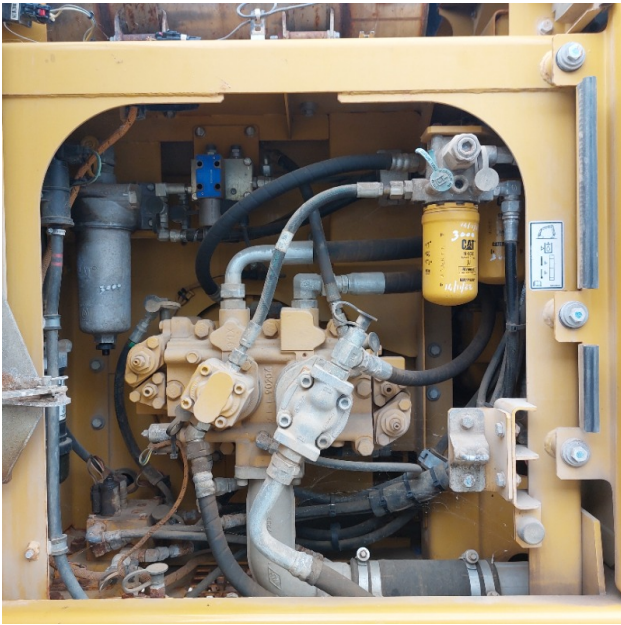
MACHINE PHOTOS

◆ Il contaore è:

Funzionante









**GENERAL APPEARANCE**

---

◆ Painting Conditions	Poor
◆ Counterweight conditions:	Good
◆ Frame/Bumper conditions:	Good

**TRUCK**

---

- ◆ Sprockets residual: 70

---

- ◆ Front idler wheel residual: 70

---

- ◆ Rollers upper/bottom residual: 70

---

- ◆ Chains residual: 70

---

- ◆ Altre anomalie sostituiti da cgt cagliari i tendi cingoli compresi molloni di entrambe le parti carro

---

### Right side

---

- ◆ Door conditions (right): Good

---

- ◆ Spar conditions: Good

---

- ◆ Other issues: verniciatura da rifare perche' ruggine con forte presenza

---

### Left side

---

- ◆ Door conditions (left): Good

---

- ◆ Door conditions (left): Good

---

- ◆ Spar conditions (left): Good

---

- ◆ Hood/Armor bottom conditions: Present and intact

---

## Functionality

---

### Engine & electrical system functionality

---

- ◆ In quale stato è stata visionata la macchina: Accesa e provata per ispezione

---

- ◆ Engine working conditions: Good

- ◆ Engine with oil leaks: No

---

- ◆ Engine presents blowby: No

---

- ◆ Oil-Water presence: No

---

- ◆ Engine present smokiness: No

---

- ◆ Radiator conditions: Good

---

- ◆ Starter motor conditions: Good

---

- ◆ Batteries/Cables conditions: Good

---

- ◆ Presence of electrical fault: No

---

### Functionality drive and rotation

---

- ◆ Hydraulic pump conditions: Good

---

- ◆ Engine rotation conditions: Good

---

- ◆ Engine travel conditions: Good

---

- ◆ Final drives conditions: Good

---

- ◆ Hydraulic joint conditions: Good  
Presence of leaks : No

---

- ◆ Hydraulic joint conditions: Good  
Presence of leaks : No

---

### Linkage Group

---

- ◆ Hydraulic conditions linkage group: No

---

- ◆ Boom structure: Good



Presence of welding/cracks : No

◆ Stick structure: Good

Presence of welding/cracks : No

◆ Flexible pipes conditions: Good

◆ Boom cylinders conditions: Good

Leaks : No

◆ Stick cylinder conditions: Good

Leaks : No

◆ Bucket cylinder conditions: Good

Leaks : No

◆ Pins & Bushings boom conditions: Good

◆ Pins & Bushings stick conditions: Good

◆ Pins & Bushings bucket conditions: Poor

◆ Bucket & Get conditions: Good

◆ Quick Coupler conditions: Good

◆ Auto Lube working conditions: No

## Cabin and Tools

◆ Conditions internal cabin: Good

◆ Flashing presents issues: No

◆ Lights & Windshield present issues: Presents and functioning

◆ Air conditioning is working: Presente e funzionante

◆ Back & side camera conditions: Present and functioning



## Check 81/2008

---

◆ Glass conditions:	Broken or Chipped - needs repair
◆ Lights conditions:	Broken or Chipped - needs repair
◆ Rear view mirrors conditions:	Excellent - no needs repair
◆ Stepladders & handrails conditions:	Good
◆ Cameras conditions:	Excellent - no needs repair
◆ Flashing conditions:	Not functioning
◆ Safety belt conditions:	Present and valid
◆ Controls been modified:	No
◆ Presence of Exclusion Control Lever:	Yes
	If No, are control levers protected to accidental functionality? : Yes
◆ Are Tools Functional & Visible with tag:	Yes
◆ Canopy completed and comes with keys and bolt:	Yes
◆ All Pipes with no damage e/o scratches:	Yes
◆ Batteries box shielded:	Yes
◆ Acoustic alarm works properly:	Yes
◆ Boardwalk presence:	Present and functioning

## Valutazione Macchina

### ★ Non Funzionante (NF)

La macchina si presenta non funzionante e/o in pessime condizioni. Macchina da demolire o venduta per parti di ricambio. La macchina NON è in sicurezza.

### ★★ Scarso (S)

La macchina è in cattivo stato e può presentare visibili rotture e/o crepe su tutta la struttura. Per il suo ottimale funzionamento, o per essere avviata, può necessitare di importanti riparazioni a carro/gomme, perdite d'olio, riverniciatura completa, componenti principali, messa in sicurezza.

### ★★★ Buono (B)

La macchina si presenta in buone condizioni sia estetiche che di funzionamento. Carro/Gomme hanno orientativamente un 30/40% di vita residua. La macchina non presenta importanti rotture e/o perdite d'olio. La macchina è pronta per lavorare "AS IS" anche se potrebbe richiedere piccoli interventi di riparazione/migliorie. La macchina è in sicurezza.

### ★★★★ Molto Buono (O)

La macchina si presenta in condizioni molto buone, non ha più di 5 anni e/o 5000 ore lavorate. Non presenta problemi strutturali e può essere preparata esteticamente per renderla "quasi nuova". Componenti principali non inferiori al 50/60% di vita residua, macchina in sicurezza.

### ★★★★★ Eccellente (E)

La macchina si presenta in condizioni eccellenti, prossime al nuovo. Componenti principali non inferiori al 70/80% di vita residua, macchina in sicurezza.

## Machine Rating

### ★ Not Working (NW)

Machine not operational or in really bad conditions. Machine has to be demolished or sold as a "parts". Machine not in security conditions.

### ★★ Poor (P)

Machine in bad condition, got visible cracks or repairable structural issues. Machine is operational but, in order to work properly, it may need significant repairs to tyres/truck, paint, pins and/or bushings, power train, hydraulic system.

### ★★★ Good (G)

Machine is in good condition and operational, with no structural issues. Tyres/Track around 30/40% of residual life. No relevant hydraulic leaks, pins/bushings with normal wear, frame may need to be repainted. Machine is ready to work "AS IS", it may need minor repairs for a better performance. Machine in security conditions or easy to be in safety condition.

### ★★★★ Very Good (VG)

Machine is in very good conditions, with no more of 5 years and/or 5000 working hours. No structural issues; painting condition is almost perfect. May need an easy check to be sold as "Brand New". Main components with 50/60% of life residue. Machine in security conditions.

### ★★★★★ Excellent (E)

Machine is in excellent condition, comparable to a new one. Main components-with 70/80% of life residue. Machine in security conditions.