

SALES REPORT: CATERPILLAR M318D MH - SN W8R00### - Year 2007

This Report is a summary about observations came out from technical inspection done by our specialised technician.

GENERAL CONDITIONS

MACHINE DATA

Model: M318D MH

Family: WHEEL EXCAVATOR

Serial Number: W8R00###

Order Number MU/MM: MU00758341

Construction year: 2007

Hour meter: 20450

General residual conditions Truck/Tyres: 10 %

Machine main application: Industry - not corrosive field

Machine availability date : 01/04/2025

Location: Coming in

Rating: ★★☆☆☆

Public price: Ask

MACHINE CONFIGURATION

- Machine type Material Handling MH
- Boom type Mono boom
- Boom check valves
- Stick check valves
- Plant features Hammer/Crusher line
- Tyres type Twin Wheel
- General Tyres Residual 10 10.00-20 10.00-20
- Blade
- Stabilizers 4 Stabilizers
- Cabin type Hydraulic lift
- Cabin fog Front superiore
- Air Conditioning system Operation Yes
- Auto lube system Operation Yes
- 220000 Kg
- CE Mark
- CE Certificate
- Use and maintenance manual
- Registration book & Licence plate No Registration book & Licence plate

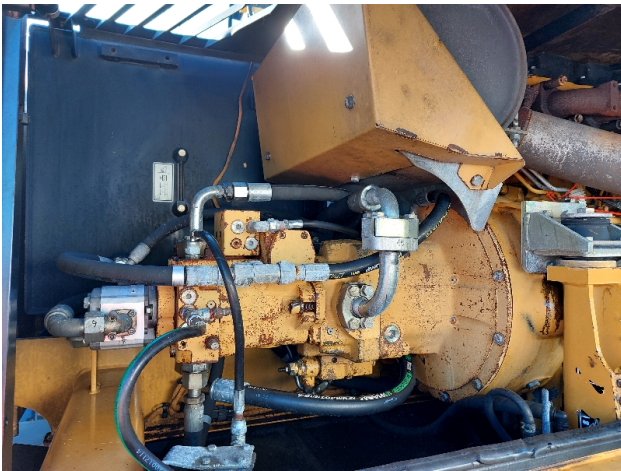
MACHINE PHOTOS

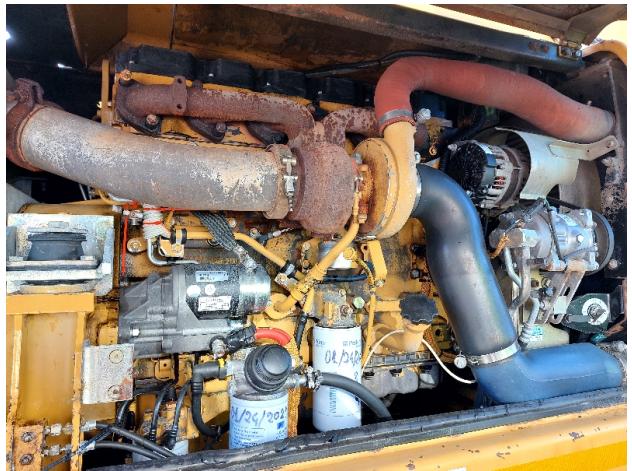
◆ Il contaore e':

Sostituito

Letture di sostituzione : 20450









GENERAL APPEARANCE

◆ Painting Conditions	Good
◆ Counterweight conditions	Good
	Needs painting? : Yes
◆ Frame / Bumper conditions	Good

Tyres

◆ Front Tyres residual	10
◆ Front Tyres residual	10

Right side

◆ Door conditions (right)	Good
◆ Spar conditions (right)	Good
◆ Other issues	Presenza di lieve ruggine sui parte dei cofani superiore.

Left side

◆ Door conditions (left)	Good
<hr/>	
◆ Door conditions (left)	Good
<hr/>	
◆ Spar conditions (left)	Good
<hr/>	
◆ Hood / Armor bottom conditions	Present and intact
<hr/>	

Functionality

Engine & electrical system functionality

◆ In quale stato è stata visionata la macchina:	Accesa e provata per ispezione
<hr/>	
◆ Engine functionality conditions	Good
<hr/>	
◆ Engine with oil leaks	No
<hr/>	
◆ Engine presents blowby	No
<hr/>	
◆ Oil-Water presence	No
<hr/>	
◆ Engine present smokiness	No
<hr/>	
◆ Radiator conditions	Good
<hr/>	
◆ Starter motor conditions	Good
<hr/>	
◆ Batteries/Cables conditions	Good
<hr/>	
◆ Presence of electrical fault	No
<hr/>	

Functionality drive and rotation

◆ Hydraulic pump conditions	Good
-----------------------------	------

◆ Engine rotation conditions	Good
◆ Engine travel conditions	Good
◆ Final drives conditions	Good
◆ Hydraulic joint conditions	Good
	Presence of leaks : No
◆ Hydraulic joint conditions	Good
	Presence of leaks : No
◆ Tenuta idraulica braccio (il braccio cala):	No

Linkage Group

◆ Hydraulic conditions linkage group (Boom is lowering?)	Yes
◆ Boom structure	Good
	Presence of welding/cracks : No
◆ Stick structure	Good
	Presence of welding/cracks : No
◆ Flexible pipes conditions	Good
◆ Boom cylinders conditions	Good
	Leaks : No
◆ Stick cylinder conditions	Good
	Leaks : No
◆ Bucket / Grapple cylinder conditions	Good
	Leaks : No
◆ Pins & Bushings boom conditions	Good
◆ Pins & Bushings stick conditions	Good

◆ Pins & Bushings bucket conditions	Good
◆ Bucket / Grapple & Get conditions	NA - Not applicable
◆ Quick Coupler conditions	NA - Not applicable
◆ Funzionamento Impianto Ingrassaggio Automatico:	Sì

Cabin and Tools

◆ Conditions internal cabin	Good
◆ Flashing presents issues	Yes
◆ Lights & Windshield present issues	Presents and functioning
◆ Air conditioning & Filters conditions	Presents and functioning
◆ Back & side camera conditions	Not functioning

Check 81/2008

◆ Condizioni freni:	Buono
◆ Condizioni freno di Stazionamento:	Buono
◆ Glass conditions	Broken or Chipped - needs repair
◆ Lights conditions	Excellent - no needs repair
◆ Rear view mirrors conditions	Broken or Chipped - needs repair
◆ Stepladders & handrails conditions	Good
◆ Cameras conditions	Broken or Chipped - needs repair



◆ Flashing conditions	Not functioning
◆ Safety belt conditions	Present and expired
◆ Controls been modified	No
◆ Presence of Exclusion Control Lever	Yes
	If No, are control levers protected to accidental functionality? : Yes
◆ Are Tools Functional & Visible with tag	Yes
◆ Canopy completed and comes with keys and bolt	Yes
◆ All Pipes with no damage e/o scratches	Yes
◆ Batteries box shielded	Yes
◆ Acoustic alarm works properly	Yes
◆ Boardwalk presence	Present and functioning

Valutazione Macchina

★ Non Funzionante (NF)

La macchina si presenta non funzionante e/o in pessime condizioni. Macchina da demolire o venduta per parti di ricambio. La macchina NON è in sicurezza.

★★ Scarso (S)

La macchina è in cattivo stato e può presentare visibili rotture e/o crepe su tutta la struttura. Per il suo ottimale funzionamento, o per essere avviata, può necessitare di importanti riparazioni a carro/gomme, perdite d'olio, riverniciatura completa, componenti principali, messa in sicurezza.

★★★ Buono (B)

La macchina si presenta in buone condizioni sia estetiche che di funzionamento. Carro/Gomme hanno orientativamente un 30/40% di vita residua. La macchina non presenta importanti rotture e/o perdite d'olio. La macchina è pronta per lavorare "AS IS" anche se potrebbe richiedere piccoli interventi di riparazione/migliorie. La macchina è in sicurezza.

★★★★ Molto Buono (O)

La macchina si presenta in condizioni molto buone, non ha più di 5 anni e/o 5000 ore lavorate. Non presenta problemi strutturali e può essere preparata esteticamente per renderla "quasi nuova". Componenti principali non inferiori al 50/60% di vita residua, macchina in sicurezza.

★★★★★ Eccellente (E)

La macchina si presenta in condizioni eccellenti, prossime al nuovo. Componenti principali non inferiori al 70/80% di vita residua, macchina in sicurezza.

Machine Rating

★ Not Working (NW)

Machine not operational or in really bad conditions. Machine has to be demolished or sold as a "parts". Machine not in security conditions.

★★ Poor (P)

Machine in bad condition, got visible cracks or repairable structural issues. Machine is operational but, in order to work properly, it may need significant repairs to tyres/truck, paint, pins and/or bushings, power train, hydraulic system.

★★★ Good (G)

Machine is in good condition and operational, with no structural issues. Tyres/Track around 30/40% of residual life. No relevant hydraulic leaks, pins/bushings with normal wear, frame may need to be repainted. Machine is ready to work "AS IS", it may need minor repairs for a better performance. Machine in security conditions or easy to be in safety condition.

★★★★ Very Good (VG)

Machine is in very good conditions, with no more of 5 years and/or 5000 working hours. No structural issues; painting condition is almost perfect. May need an easy check to be sold as "Brand New". Main components with 50/60% of life residue. Machine in security conditions.

★★★★★ Excellent (E)

Machine is in excellent condition, comparable to a new one. Main components-with 70/80% of life residue. Machine in security conditions.