

SALES REPORT: CATERPILLAR 301.7 - SN JH700626 - Year 2019

This Report is a summary about observations comes out from technical inspection done by our specialised technician.

GENERAL CONDITIONS

MACHINE DATA

Model: 301.7

Family: MINI EXCAVATOR

Serial Number: JH700626

Order Number MU/MM: MU00760858

Construction year: 2019

Hour meter: 2650

General residual conditions Truck/Tyres: 60 %

Machine main application: Basic application

Location: Stock Off.Buniotto

Rating: ★★☆☆☆

Public price: Ask

MACHINE CONFIGURATION

• Machine type Standard • Boom type Mono boom • Plant features Versatility • Quick coupler Mechanic Cangini CR 15 • Bucket Ditch Cleaning Bucket Get Cover Blade 1200 • Truck type Hydraulic extendible • Blade • General Truck Residual 60% • Cabin type Fixed standard • Cabin fog Upper • 1700 Kg • CE Mark • CE Certificate • Use and maintenance manual

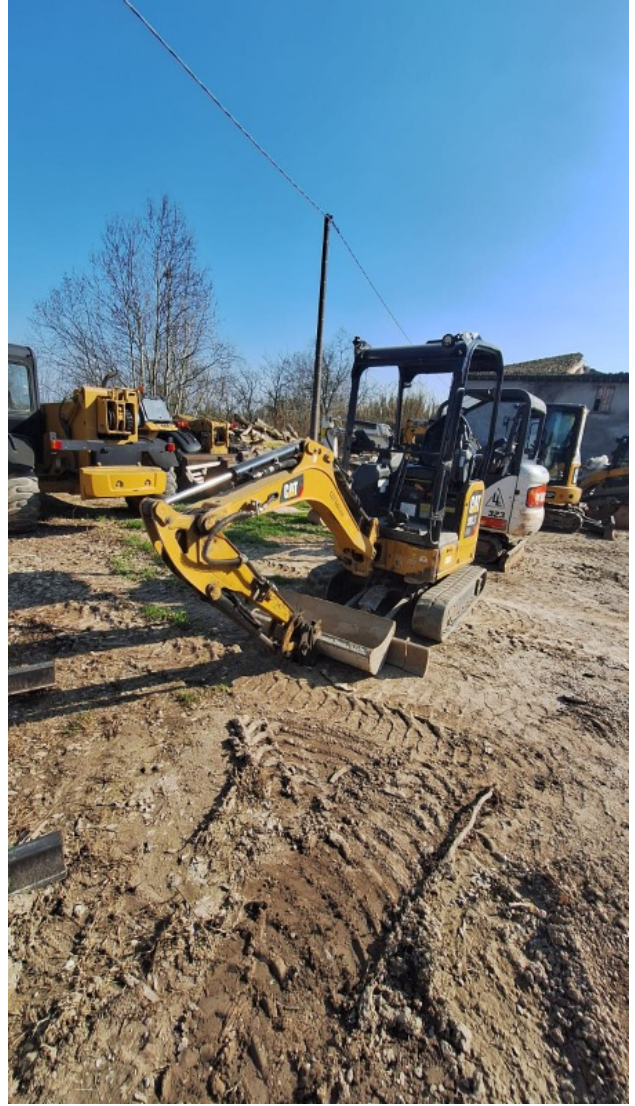
MACHINE PHOTOS

◆ Il contaore è:

Funzionante









GENERAL APPEARANCE

- ◆ Painting Conditions Poor

- ◆ Counterweight conditions: Poor

- ◆ Frame/Bumper conditions: Poor

TRUCK

- ◆ Sprockets residual: 60

- ◆ Front idler wheel residual: 60

◆ Rollers upper/bottom residual: 60

◆ Chains residual: 30

Right side

◆ Door conditions (right): Good

◆ Spar conditions: Good

Left side

◆ Door conditions (left): Good

◆ Door conditions (left): Good

◆ Spar conditions (left): Good

◆ Hood/Armor bottom conditions: Present and bash

Functionality

Engine & electrical system functionality

◆ In quale stato è stata visionata la macchina: Accesa e provata per ispezione

◆ Engine working conditions: Good

◆ Engine with oil leaks: No

◆ Engine presents blowby: No

◆ Oil-Water presence: No

◆ Engine present smokiness: No

- ◆ Radiator conditions: Good

- ◆ Starter motor conditions: Good

- ◆ Batteries/Cables conditions: Good

- ◆ Presence of electrical fault: Si

SE SI, AGGIUNGERE DETTAGLI : DA CONTROLLARE IMPIANTO ELETTRICO

Functionality drive and rotation

- ◆ Hydraulic pump conditions: Good

- ◆ Engine rotation conditions: Good

- ◆ Engine travel conditions: Good

- ◆ Final drives conditions: Good

- ◆ Hydraulic joint conditions: Good
Presence of leaks : No

- ◆ Hydraulic joint conditions: Good
Presence of leaks : No

Linkage Group

- ◆ Hydraulic conditions linkage group: No

- ◆ Boom structure: Good
Presence of welding/cracks : No

- ◆ Stick structure: Good
Presence of welding/cracks : No

- ◆ Flexible pipes conditions: Poor



- ◆ Boom cylinders conditions: Good
Leaks : No

- ◆ Stick cylinder conditions: Good
Leaks : No

- ◆ Bucket cylinder conditions: Good
Leaks : No

- ◆ Pins & Bushings boom conditions: Poor

- ◆ Pins & Bushings stick conditions: Poor

- ◆ Pins & Bushings bucket conditions: Poor

- ◆ Bucket & Get conditions: Poor

- ◆ Quick Coupler conditions: Good

- ◆ Auto Lube working conditions: No

Cabin and Tools

- ◆ Conditions internal cabin: Poor

- ◆ Flashing presents issues: No

- ◆ Lights & Windshield present issues: Not presents

- ◆ Air conditioning is working: Non Presente

- ◆ Back & side camera conditions: Not functioning

Check 81/2008

- ◆ Glass conditions: Excellent - no needs repair



◆ Lights conditions:	Broken or Chipped - needs repair
◆ Rear view mirrors conditions:	Mancanti
◆ Stepladders & handrails conditions:	NA - Not applicable
◆ Cameras conditions:	Broken or Chipped - needs repair
◆ Flashing conditions:	Not functioning
◆ Safety belt conditions:	Present and valid
◆ Controls been modified:	No
◆ Presence of Exclusion Control Lever:	Yes
◆ Are Tools Functional & Visible with tag:	Yes
◆ Canopy completed and comes with keys and bolt:	Yes
◆ All Pipes with no damage e/o scratches:	Yes
◆ Batteries box shielded:	Yes
◆ Acoustic alarm works properly:	Yes
◆ Boardwalk presence:	Not present

Valutazione Macchina

★ Non Funzionante (NF)

La macchina si presenta non funzionante e/o in pessime condizioni. Macchina da demolire o venduta per parti di ricambio. La macchina NON è in sicurezza.

★★ Scarso (S)

La macchina è in cattivo stato e può presentare visibili rotture e/o crepe su tutta la struttura. Per il suo ottimale funzionamento, o per essere avviata, può necessitare di importanti riparazioni a carro/gomme, perdite d'olio, riverniciatura completa, componenti principali, messa in sicurezza.

★★★ Buono (B)

La macchina si presenta in buone condizioni sia estetiche che di funzionamento. Carro/Gomme hanno orientativamente un 30/40% di vita residua. La macchina non presenta importanti rotture e/o perdite d'olio. La macchina è pronta per lavorare "AS IS" anche se potrebbe richiedere piccoli interventi di riparazione/migliorie. La macchina è in sicurezza.

★★★★ Molto Buono (O)

La macchina si presenta in condizioni molto buone, non ha più di 5 anni e/o 5000 ore lavorate. Non presenta problemi strutturali e può essere preparata esteticamente per renderla "quasi nuova". Componenti principali non inferiori al 50/60% di vita residua, macchina in sicurezza.

★★★★★ Eccellente (E)

La macchina si presenta in condizioni eccellenti, prossime al nuovo. Componenti principali non inferiori al 70/80% di vita residua, macchina in sicurezza.

Machine Rating

★ Not Working (NW)

Machine not operational or in really bad conditions. Machine has to be demolished or sold as a "parts". Machine not in security conditions.

★★ Poor (P)

Machine in bad condition, got visible cracks or repairable structural issues. Machine is operational but, in order to work properly, it may need significant repairs to tyres/truck, paint, pins and/or bushings, power train, hydraulic system.

★★★ Good (G)

Machine is in good condition and operational, with no structural issues. Tyres/Track around 30/40% of residual life. No relevant hydraulic leaks, pins/bushings with normal wear, frame may need to be repainted. Machine is ready to work "AS IS", it may need minor repairs for a better performance. Machine in security conditions or easy to be in safety condition.

★★★★ Very Good (VG)

Machine is in very good conditions, with no more of 5 years and/or 5000 working hours. No structural issues; painting condition is almost perfect. May need an easy check to be sold as "Brand New". Main components with 50/60% of life residue. Machine in security conditions.

★★★★★ Excellent (E)

Machine is in excellent condition, comparable to a new one. Main components-with 70/80% of life residue. Machine in security conditions.