

SALES REPORT: MANITOU BT420#KMANI - SN 123### - Year 1997

This Report is a summary about observations comes out from technical inspection done by our specialised technician.

GENERAL CONDITIONS

MACHINE DATA

Model: BT420#KMANI

Family: FIXED TELESCOPIC HANDLER

Serial Number: 123###

Order Number MU/MM: MU00763223

Construction year: 1997

Hour meter: 291

General residual conditions Truck/Tyres: 10 %

Machine main application: Industry - not corrosive field

Machine availability date : 18/04/2025

Location: Coming in

Rating: ★★☆☆☆

Public price: 12.500 €

MACHINE CONFIGURATION

- Machine type Standard - GP
- Boom type Mono boom
- Boom check valves
- undefined
- Tyres type
- Stabilizers No Stabilizers
- Quick coupler Mechanic
- Bucket Standard 1 Get Cover Blade
- Forks
- Tyres type Filled
- General Tyres Residual 10 x speedy hanno le posteriori nuove da sostituire
- Rops Close
- 4610 Kg
- CE Mark
- CE Certificate
- Use and maintenance manual
- Registration book & Licence plate undefined

MACHINE PHOTOS

◆ Il contaore e':

Sostituito

Ore Stimate : 10000 Lettura di sostituzione : 291





Galaxy A52



Galaxy A52



Galaxy A52



Galaxy A52



Galaxy A52



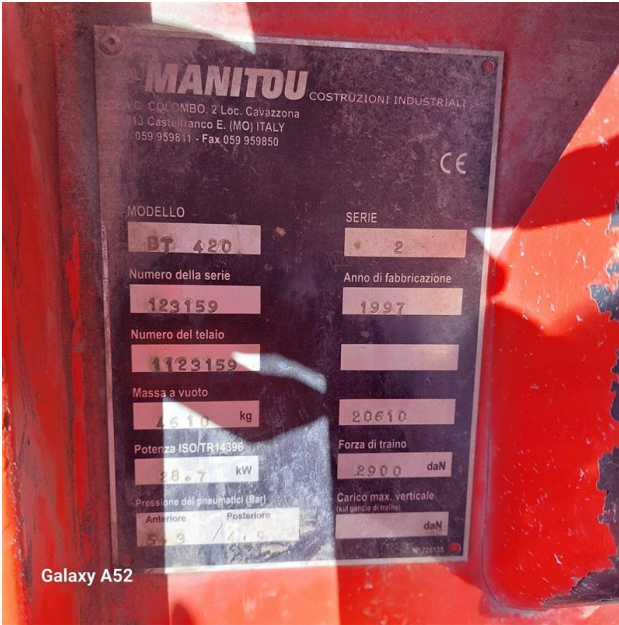
Galaxy A52



Galaxy A52



Galaxy A52



GENERAL APPEARANCE

◆ Painting Conditions:	Poor
◆ Counterweight conditions:	Poor
	Needs painting? : Yes
◆ Frame/Bumper conditions:	Good
◆ Door conditions:	Poor
◆ Fender/Mudguard conditions:	Poor

Tyres

◆ Front Tyres residual:	30
◆ Front Tyres residual:	5

Functionality

Engine & electrical system functionality

◆ In quale stato è stata visionata la macchina:	Accesa e funzionante "al lavoro"
<hr/>	
◆ Engine working conditions:	Good
<hr/>	
◆ Engine with oil leaks:	No
<hr/>	
◆ Engine presents blowby:	No
<hr/>	
◆ Oil-Water presence:	No
<hr/>	
◆ Engine present smokiness:	No
<hr/>	
◆ Radiator conditions:	Good
<hr/>	
◆ Starter motor conditions:	Good
<hr/>	
◆ Batteries/Cables conditions:	Good
<hr/>	
◆ Presence of electrical fault:	No
<hr/>	

Functionality drive and rotation

◆ Hydraulic pump conditions:	Good
<hr/>	
◆ Engine travel conditions:	Good
<hr/>	
◆ Final drives conditions:	Good
<hr/>	
◆ Hydraulic joint conditions:	NA - Not applicable
	Presence of leaks : No
<hr/>	
◆ Gear switches go/back conditions:	NA - Not Applicable
<hr/>	

Engine & electrical system functionality

◆ Engine working conditions: Good

◆ Radiator conditions: Good

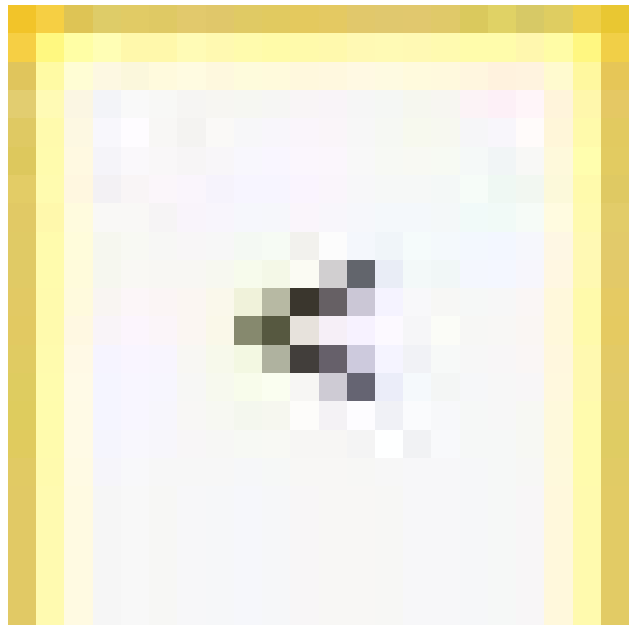
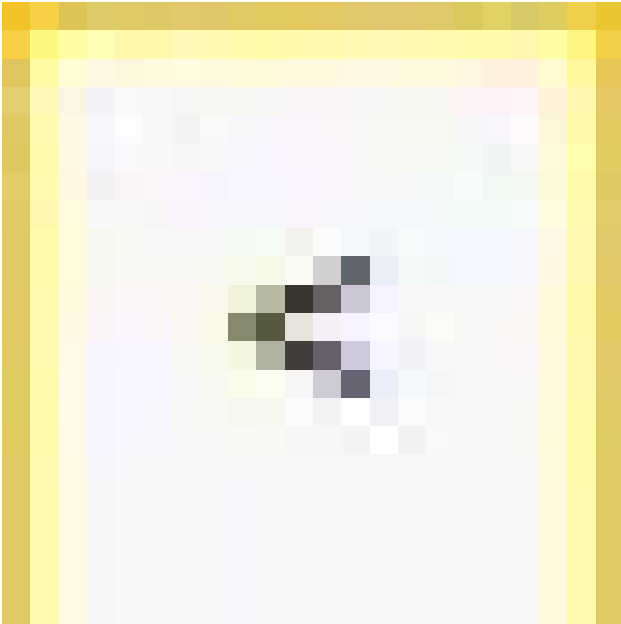
Linkage Group

◆ Tenuta idraulica braccio (il braccio cala): No

◆ Boom structure: Good

Photos

Presence of welding/cracks : No



◆ Flexible pipes conditions: Poor

◆ Lifting cylinders conditions: Poor

◆ Bucket cylinder conditions: Poor

◆ Pins & Bushings bucket conditions: Poor

◆ Bucket & Get conditions: Good

◆ Quick Coupler conditions: Good

◆ Funzionamento Impianto Ingrassaggio Automatico: No

Cabin and Tools

- ◆ Conditions internal cabin: Poor

- ◆ Lights & Windshield present issues: Present and not functioning

- ◆ Air conditioning & Filters conditions: Non Presente

- ◆ Back & side camera conditions: Not functioning

Check 81/2008

- ◆ Condizioni freni: Buono

- ◆ Condizioni freno di Stazionamento: Buono

- ◆ Glass conditions: Broken or Chipped - needs repair

- ◆ Lights conditions: Broken or Chipped - needs repair

- ◆ Condizioni specchietti: Rotto o Scheggiato - necessita riparazione

- ◆ Stepladders & handrails conditions: Good

- ◆ Cameras conditions: Broken or Chipped - needs repair

- ◆ Flashing conditions: Present and functioning

- ◆ Safety belt conditions: Present and expired

- ◆ Controls been modified: No

- ◆ Presence of Exclusion Control Lever: No

- If No, are control levers protected to accidental functionality? : Yes

- ◆ Are Tools Functional & Visible with tag: Yes



- ◆ Canopy completed and comes with keys and bolt: Yes

- ◆ All Pipes with no damage e/o scratches: No

- ◆ Batteries box shielded: Yes

- ◆ Acoustic alarm works properly: No

- ◆ Boardwalk presence: Not present

- ◆ Annotazioni sul: macchina vecchia , ma funzionante per il lavoro che fa, con certificazioni ispel

Valutazione Macchina

★ Non Funzionante (NF)

La macchina si presenta non funzionante e/o in pessime condizioni. Macchina da demolire o venduta per parti di ricambio. La macchina NON è in sicurezza.

★★ Scarso (S)

La macchina è in cattivo stato e può presentare visibili rotture e/o crepe su tutta la struttura. Per il suo ottimale funzionamento, o per essere avviata, può necessitare di importanti riparazioni a carro/gomme, perdite d'olio, riverniciatura completa, componenti principali, messa in sicurezza.

★★★ Buono (B)

La macchina si presenta in buone condizioni sia estetiche che di funzionamento.

Carro/Gomme hanno orientativamente un 30/40% di vita residua. La macchina non presenta importanti rotture e/o perdite d'olio. La macchina è pronta per lavorare "AS IS" anche se potrebbe richiedere piccoli interventi di riparazione/migliorie. La macchina è in sicurezza.

★★★★ Molto Buono (O)

La macchina si presenta in condizioni molto buone, non ha più di 5 anni e/o 5000 ore lavorate.

Non presenta problemi strutturali e può essere preparata esteticamente per renderla "quasi nuova".

Componenti principali non inferiori al 50/60% di vita residua, macchina in sicurezza.

★★★★★ Eccellente (E)

La macchina si presenta in condizioni eccellenti, prossime al nuovo.

Componenti principali non inferiori al 70/80% di vita residua, macchina in sicurezza.

Machine Rating

★ Not Working (NW)

Machine not operational or in really bad conditions. Machine has to be demolished or sold as a "parts". Machine not in security conditions.

★★ Poor (P)

Machine in bad condition, got visible cracks or repairable structural issues. Machine is operational but, in order to work properly, it may need significant repairs to tyres/truck, paint, pins and/or bushings, power train, hydraulic system.

★★★ Good (G)

Machine is in good condition and operational, with no structural issues.

Tyres/Track around 30/40% of residual life. No relevant hydraulic leaks, pins/bushings with normal wear, frame may need to be repainted.

Machine is ready to work "AS IS", it may need minor repairs for a better performance. Machine in security conditions or easy to be in safety condition.

★★★★ Very Good (VG)

Machine is in very good conditions, with no more of 5 years and/or 5000 working hours.

No structural issues; painting condition is almost perfect. May need an easy check to be sold as "Brand New".

Main components with 50/60% of life residue. Machine in security conditions.

★★★★★ Excellent (E)

Machine is in excellent condition, comparable to a new one.

Main components-with 70/80% of life residue. Machine in security conditions.