

## SALES REPORT: CATERPILLAR 330 GC - SN TML10017 - Year 2021

This Report is a summary about observations came out from technical inspection done by our specialised technician.

### GENERAL CONDITIONS

---

### MACHINE DATA

---

**Model:** 330 GC

**Family:** MEDIUM EXCAVATOR

**Serial Number:** TML10017

**Order Number MU/MM:** MU00769837

**Construction year:** 2021

**Hour meter:** 6824

**General residual conditions Truck/Tyres:** 40 %

**Machine main application:** Basic application

**Location:** Stock Villa Autotrasp

**Rating:** ★★☆☆☆

**Public price:** 165.000 €

### MACHINE CONFIGURATION

---

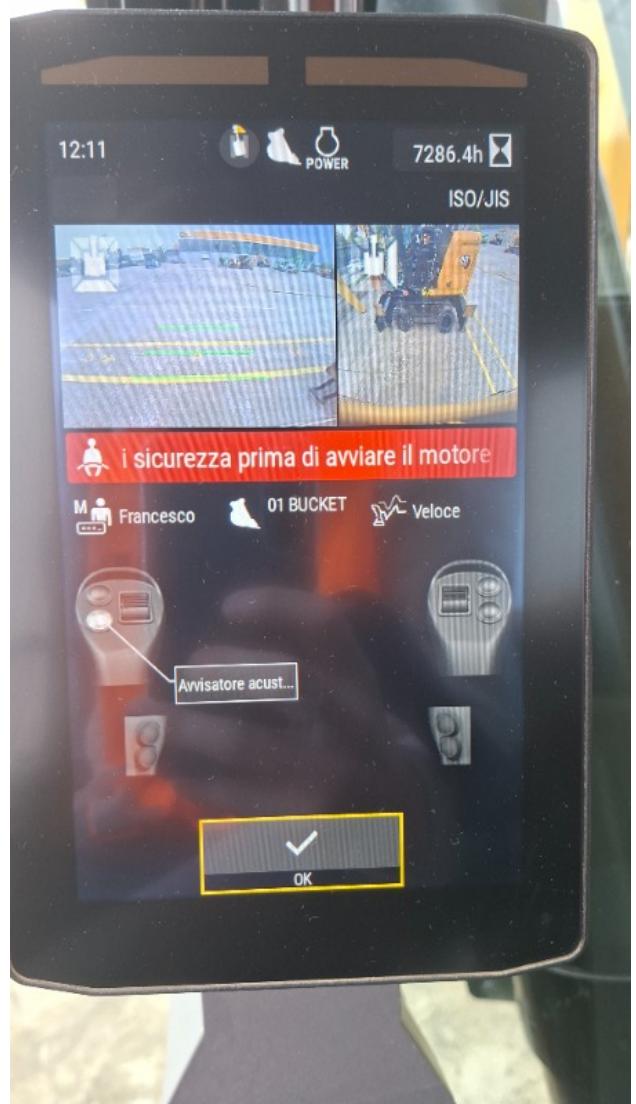
- Machine type Standard
- Boom type Mono boom
- Boom check valves
- Stick check valves
- Plant features Versatility
- Quick coupler Mechanic Cat CW45
- Bucket Standard 1.76 - 1600 Get Teeth
- Truck type Fixed
- General Truck Residual 40%
- Cabin type Fixed standard
- Air Conditioning system
- Product Link
- 29500 Kg
- CE Mark
- CE Certificate
- Use and maintenance manual

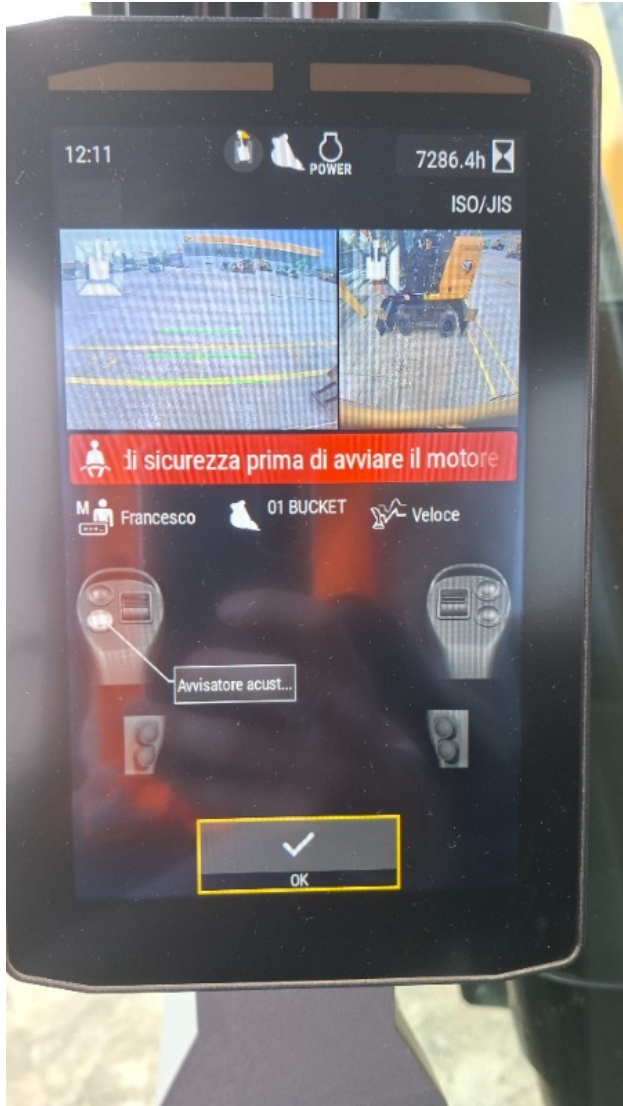
**MACHINE PHOTOS**

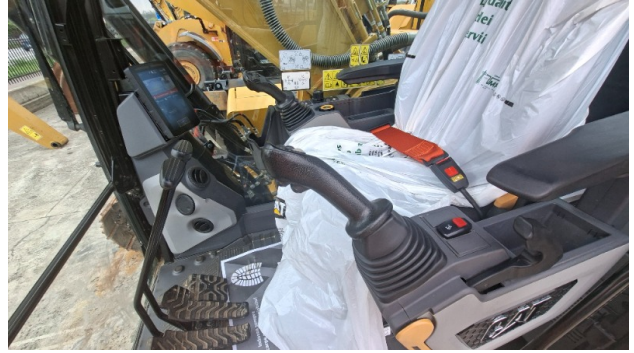
◆ Il contaore è:

Funzionante









## GENERAL APPEARANCE

◆ Painting Conditions

Very Good

◆ Counterweight conditions:

Good

---

◆ Frame/Bumper conditions: Very Good

---

**TRUCK**

---

◆ Sprockets residual: 40

---

◆ Front idler wheel residual: 40

---

◆ Rollers upper/bottom residual: 40

---

◆ Chains residual: 50

---

**Right side**

---

◆ Door conditions (right): Good

---

◆ Spar conditions: Good

---

**Left side**

---

◆ Door conditions (left): Very good

---

◆ Door conditions (left): Very good

---

◆ Spar conditions (left): Very good

---

◆ Hood/Armor bottom conditions: Present and intact

---

**Functionality**

---

**Engine & electrical system functionality**

---

◆ In quale stato è stata visionata la macchina: Accesa e funzionante "al lavoro"

- 
- ◆ Engine working conditions: Very good

---

  - ◆ Engine with oil leaks: No

---

  - ◆ Engine presents blowby: No

---

  - ◆ Oil-Water presence: No

---

  - ◆ Engine present smokiness: No

---

  - ◆ Radiator conditions: Very good

---

  - ◆ Starter motor conditions: Very good

---

  - ◆ Batteries/Cables conditions: Very good

---

  - ◆ Presence of electrical fault: No

---

**Functionality drive and rotation**

---

- ◆ Hydraulic pump conditions: Very good

---

- ◆ Engine rotation conditions: Very good

---

- ◆ Engine travel conditions: Very good

---

- ◆ Final drives conditions: Very good

---

- ◆ Hydraulic joint conditions: Very good

---

- Presence of leaks : No

---

- ◆ Hydraulic joint conditions: Good

---

- Presence of leaks : No

---

**Linkage Group**

---

- ◆ Hydraulic conditions linkage group: No

◆ Boom structure:	Good
	Presence of welding/cracks : No
◆ Stick structure:	Good
	Presence of welding/cracks : No
◆ Flexible pipes conditions:	Good
◆ Boom cylinders conditions:	Good
	Leaks : No
◆ Stick cylinder conditions:	Good
	Leaks : No
◆ Bucket cylinder conditions:	Good
	Leaks : No
◆ Pins & Bushings boom conditions:	Good
◆ Pins & Bushings stick conditions:	Good
◆ Pins & Bushings bucket conditions:	Good
◆ Bucket & Get conditions:	Poor
◆ Quick Coupler conditions:	Good
◆ Auto Lube working conditions:	No

## Cabin and Tools

◆ Conditions internal cabin:	Very good
◆ Flashing presents issues:	No
◆ Lights & Windshield present issues:	Presents and functioning
◆ Air conditioning is working:	Presente e funzionante

---

◆ Back & side camera conditions: Present and functioning

---

**Check 81/2008**

---

◆ Glass conditions: Excellent - no needs repair

---

◆ Lights conditions: Excellent - no needs repair

---

◆ Rear view mirrors conditions: Excellent - no needs repair

---

◆ Stepladders & handrails conditions: Very good

---

◆ Cameras conditions: Excellent - no needs repair

---

◆ Flashing conditions: Not functioning

---

◆ Safety belt conditions: Present and valid

---

◆ Controls been modified: No

---

◆ Presence of Exclusion Control Lever: Yes

---

If No, are control levers protected to accidental functionality? : Yes

---

◆ Are Tools Functional & Visible with tag: Yes

---

◆ Canopy completed and comes with keys and bolt: Yes

---

◆ All Pipes with no damage e/o scratches: Yes

---

◆ Batteries box shielded: Yes

---

◆ Acoustic alarm works properly: Yes

---

◆ Boardwalk presence: Present and functioning

---

## Valutazione Macchina

### ★ Non Funzionante (NF)

La macchina si presenta non funzionante e/o in pessime condizioni. Macchina da demolire o venduta per parti di ricambio. La macchina NON è in sicurezza.

### ★★ Scarso (S)

La macchina è in cattivo stato e può presentare visibili rotture e/o crepe su tutta la struttura. Per il suo ottimale funzionamento, o per essere avviata, può necessitare di importanti riparazioni a carro/gomme, perdite d'olio, riverniciatura completa, componenti principali, messa in sicurezza.

### ★★★ Buono (B)

La macchina si presenta in buone condizioni sia estetiche che di funzionamento. Carro/Gomme hanno orientativamente un 30/40% di vita residua. La macchina non presenta importanti rotture e/o perdite d'olio. La macchina è pronta per lavorare "AS IS" anche se potrebbe richiedere piccoli interventi di riparazione/migliorie. La macchina è in sicurezza.

### ★★★★ Molto Buono (O)

La macchina si presenta in condizioni molto buone, non ha più di 5 anni e/o 5000 ore lavorate. Non presenta problemi strutturali e può essere preparata esteticamente per renderla "quasi nuova". Componenti principali non inferiori al 50/60% di vita residua, macchina in sicurezza.

### ★★★★★ Eccellente (E)

La macchina si presenta in condizioni eccellenti, prossime al nuovo. Componenti principali non inferiori al 70/80% di vita residua, macchina in sicurezza.

## Machine Rating

### ★ Not Working (NW)

Machine not operational or in really bad conditions. Machine has to be demolished or sold as a "parts". Machine not in security conditions.

### ★★ Poor (P)

Machine in bad condition, got visible cracks or repairable structural issues. Machine is operational but, in order to work properly, it may need significant repairs to tyres/truck, paint, pins and/or bushings, power train, hydraulic system.

### ★★★ Good (G)

Machine is in good condition and operational, with no structural issues. Tyres/Track around 30/40% of residual life. No relevant hydraulic leaks, pins/bushings with normal wear, frame may need to be repainted. Machine is ready to work "AS IS", it may need minor repairs for a better performance. Machine in security conditions or easy to be in safety condition.

### ★★★★ Very Good (VG)

Machine is in very good conditions, with no more of 5 years and/or 5000 working hours. No structural issues; painting condition is almost perfect. May need an easy check to be sold as "Brand New". Main components with 50/60% of life residue. Machine in security conditions.

### ★★★★★ Excellent (E)

Machine is in excellent condition, comparable to a new one. Main components-with 70/80% of life residue. Machine in security conditions.