

## SALES REPORT: CATERPILLAR 323F - SN MFY20288 - Year 2019

This Report is a summary about observations came out from technical inspection done by our specialised technician.

### GENERAL CONDITIONS

---

#### MACHINE DATA

---

**Model:** 323F

**Family:** MEDIUM EXCAVATOR

**Serial Number:** MFY20288

**Order Number MU/MM:** MU00778767

**Construction year:** 2019

**Hour meter:** 6816

**General residual conditions Truck/Tyres:** 70 %

**Machine main application:** Basic application

**Location:** Stock BARI

**Rating:** ★★☆☆☆

**Public price:** Ask

#### MACHINE CONFIGURATION

---

● Machine type Standard ● Boom type Triple boom ● Boom check valves ● Stick check valves ● Plant features Versatility ● Bucket Heavy duty 1.3 Get undefined 1 ● Truck type Fixed ● General Truck Residual 80% ● Cabin type Fixed standard ● Air Conditioning system ● Auto Lube system ● Product Link ● CE Mark ● CE Certificate ● KPKXL04.4MW1 EPA ● Use and maintenance manual ● AVAILABLE FROM MARCH

## MACHINE PHOTOS

---

◆ Il contaore è:

Funzionante









## GENERAL APPEARANCE

◆ Painting Conditions	Very Good
◆ Counterweight conditions:	Very good
◆ Frame/Bumper conditions:	Very Good

## TRUCK

◆ Sprockets residual:	80
◆ Front idler wheel residual:	70
◆ Rollers upper/bottom residual:	70
◆ Chains residual:	70

### Right side

---

- ◆ Door conditions (right): Very good
  - ◆ Spar conditions: Very good
- 

### Left side

---

- ◆ Door conditions (left): Very good
  - ◆ Door conditions (left): Very good
  - ◆ Spar conditions (left): Very good
  - ◆ Hood/Armor bottom conditions: Present and intact
- 

### Functionality

---

#### Engine & electrical system functionality

---

- ◆ In quale stato è stata visionata la macchina: Accesa e provata per ispezione
- ◆ Engine working conditions: Excellent
- ◆ Engine with oil leaks: No
- ◆ Engine presents blowby: No
- ◆ Oil-Water presence: No
- ◆ Engine present smokiness: No
- ◆ Radiator conditions: Very good
- ◆ Starter motor conditions: Very good

---

◆ Batteries/Cables conditions: Very good

---

◆ Presence of electrical fault: No

---

**Functionality drive and rotation**

---

◆ Hydraulic pump conditions: Very good

---

◆ Engine rotation conditions: Very good

---

◆ Engine travel conditions: Very good

---

◆ Final drives conditions: Very good

---

◆ Hydraulic joint conditions: Very good

Presence of leaks : No

---

◆ Hydraulic joint conditions: Very good

Presence of leaks : No

---

**Linkage Group**

---

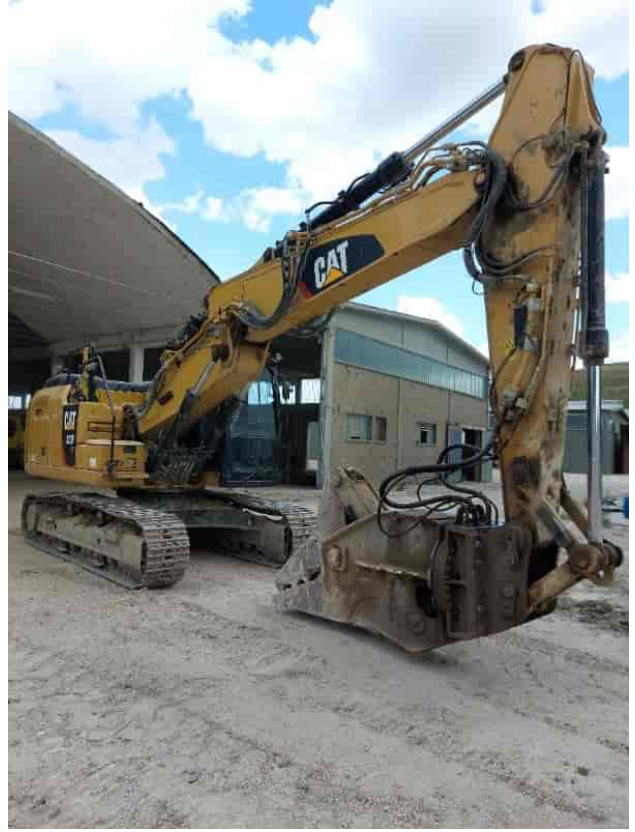
◆ Hydraulic conditions linkage group: No

---

◆ Boom structure: Very good

Photos

Presence of welding/cracks : No



◆ Stick structure:

Very good

Photos

Presence of welding/cracks : No





◆ Flexible pipes conditions:	Very good
◆ Boom cylinders conditions:	Very good Leaks : No
◆ Stick cylinder conditions:	Very good Leaks : No
◆ Bucket cylinder conditions:	Very good Leaks : No
◆ Pins & Bushings boom conditions:	Very good
◆ Pins & Bushings stick conditions:	Very good
◆ Pins & Bushings bucket conditions:	Very good
◆ Bucket & Get conditions:	Very good
◆ Quick Coupler conditions:	NA - Not applicable
◆ Auto Lube working conditions:	SI

---

## Cabin and Tools

---

- ◆ Conditions internal cabin: Very good

---

- ◆ Flashing presents issues: No

---

- ◆ Lights & Windshield present issues: Presents and functioning

---

- ◆ Air conditioning is working: Presente e funzionante

---

- ◆ Back & side camera conditions: Present and functioning

---

## Check 81/2008

---

- ◆ Glass conditions: Excellent - no needs repair

---

- ◆ Lights conditions: Excellent - no needs repair

---

- ◆ Rear view mirrors conditions: Excellent - no needs repair

---

- ◆ Stepladders & handrails conditions: Very good

---

- ◆ Cameras conditions: Excellent - no needs repair

---

- ◆ Flashing conditions: Not functioning

---

- ◆ Safety belt conditions: Present and valid

---

- ◆ Controls been modified: No

---

- ◆ Presence of Exclusion Control Lever: Yes

---

- ◆ Are Tools Functional & Visible with tag: Yes

---

- ◆ Canopy completed and comes with keys and bolt: Yes

---

- ◆ All Pipes with no damage e/o scratches: Yes

---
- ◆ Batteries box shielded: Yes

---
- ◆ Acoustic alarm works properly: Yes

---
- ◆ Boardwalk presence: Present and functioning

---

## Valutazione Macchina

### ★ Non Funzionante (NF)

La macchina si presenta non funzionante e/o in pessime condizioni. Macchina da demolire o venduta per parti di ricambio. La macchina NON è in sicurezza.

### ★★ Scarso (S)

La macchina è in cattivo stato e può presentare visibili rotture e/o crepe su tutta la struttura. Per il suo ottimale funzionamento, o per essere avviata, può necessitare di importanti riparazioni a carro/gomme, perdite d'olio, riverniciatura completa, componenti principali, messa in sicurezza.

### ★★★ Buono (B)

La macchina si presenta in buone condizioni sia estetiche che di funzionamento. Carro/Gomme hanno orientativamente un 30/40% di vita residua. La macchina non presenta importanti rotture e/o perdite d'olio. La macchina è pronta per lavorare "AS IS" anche se potrebbe richiedere piccoli interventi di riparazione/migliorie. La macchina è in sicurezza.

### ★★★★ Molto Buono (O)

La macchina si presenta in condizioni molto buone, non ha più di 5 anni e/o 5000 ore lavorate. Non presenta problemi strutturali e può essere preparata esteticamente per renderla "quasi nuova". Componenti principali non inferiori al 50/60% di vita residua, macchina in sicurezza.

### ★★★★★ Eccellente (E)

La macchina si presenta in condizioni eccellenti, prossime al nuovo. Componenti principali non inferiori al 70/80% di vita residua, macchina in sicurezza.

## Machine Rating

### ★ Not Working (NW)

Machine not operational or in really bad conditions. Machine has to be demolished or sold as a "parts". Machine not in security conditions.

### ★★ Poor (P)

Machine in bad condition, got visible cracks or repairable structural issues. Machine is operational but, in order to work properly, it may need significant repairs to tyres/truck, paint, pins and/or bushings, power train, hydraulic system.

### ★★★ Good (G)

Machine is in good condition and operational, with no structural issues. Tyres/Track around 30/40% of residual life. No relevant hydraulic leaks, pins/bushings with normal wear, frame may need to be repainted. Machine is ready to work "AS IS", it may need minor repairs for a better performance. Machine in security conditions or easy to be in safety condition.

### ★★★★ Very Good (VG)

Machine is in very good conditions, with no more of 5 years and/or 5000 working hours. No structural issues; painting condition is almost perfect. May need an easy check to be sold as "Brand New". Main components with 50/60% of life residue. Machine in security conditions.

### ★★★★★ Excellent (E)

Machine is in excellent condition, comparable to a new one. Main components-with 70/80% of life residue. Machine in security conditions.