

SALES REPORT: CATERPILLAR 323F - SN MFY20282 - Year 2019

This Report is a summary about observations comes out from technical inspection done by our specialised technician.

GENERAL CONDITIONS

MACHINE DATA

Model: 323F

Family: MEDIUM EXCAVATOR

Serial Number: MFY20282

Order Number MU/MM: MU00780422

Construction year: 2019

Hour meter: 9011

General residual conditions Truck/Tyres: 50 %

Machine main application: Basic application

Location: Stock CAGLIARI

Rating: ★★☆☆☆

Public price: 105.000 €

MACHINE CONFIGURATION

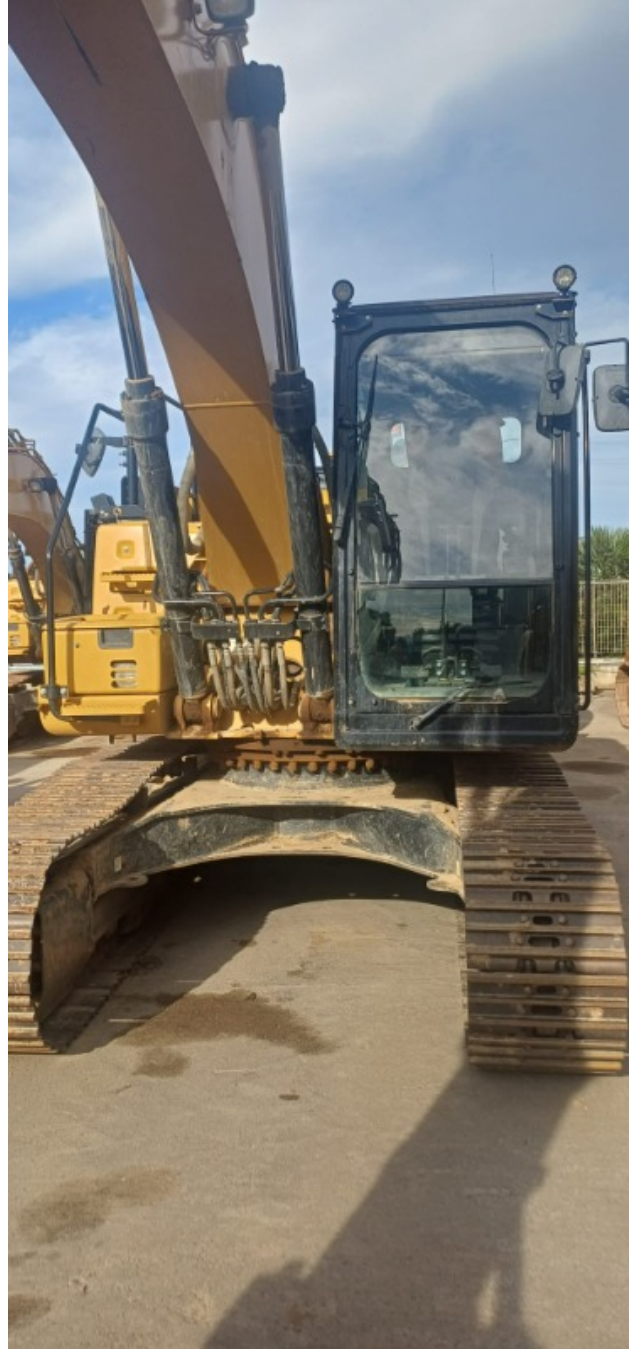
● Machine type Standard ● Boom type Mono boom ● Boom check valves ● Stick check valves ● Plant features Versatility ● Bucket Standard 1,4 mc. 1,3 Get undefined ● Truck type Fixed ● General Truck Residual 50% ● Cabin type Fixed standard ● Air Conditioning system ● Product Link ● 23000 Kg ● CE Mark ● CE Certificate ● Use and maintenance manual

MACHINE PHOTOS

◆ Il contaore è:

Funzionante











GENERAL APPEARANCE

- ◆ Painting Conditions Good

- ◆ Counterweight conditions: Good

- ◆ Frame/Bumper conditions: Good

TRUCK

◆ Sprockets residual:	50
◆ Front idler wheel residual:	50
◆ Rollers upper/bottom residual:	50
◆ Chains residual:	50
◆ Altre anomalie	Pattini al 40%

Right side

◆ Door conditions (right):	Good
◆ Spar conditions:	Good

Left side

◆ Door conditions (left):	Good
◆ Door conditions (left):	Good
◆ Spar conditions (left):	Good
◆ Hood/Armor bottom conditions:	Present and intact

Functionality

Engine & electrical system functionality

◆ In quale stato è stata visionata la macchina:	Accesa e funzionante "al lavoro"
◆ Engine working conditions:	Good

- ◆ Engine with oil leaks: No

- ◆ Engine presents blowby: No

- ◆ Oil-Water presence: No

- ◆ Engine present smokiness: No

- ◆ Radiator conditions: Good

- ◆ Starter motor conditions: Good

- ◆ Batteries/Cables conditions: Good

- ◆ Presence of electrical fault: No

Functionality drive and rotation

- ◆ Hydraulic pump conditions: Good

- ◆ Engine rotation conditions: Good

- ◆ Engine travel conditions: Good

- ◆ Final drives conditions: Good

- ◆ Hydraulic joint conditions: Good

Presence of leaks : No

- ◆ Hydraulic joint conditions: Good

Presence of leaks : No

Linkage Group

- ◆ Hydraulic conditions linkage group: No

- ◆ Boom structure: Good

Presence of welding/cracks : No

◆ Stick structure: Good

Presence of welding/cracks : No

◆ Flexible pipes conditions: Good

◆ Boom cylinders conditions: Good

Leaks : No

◆ Stick cylinder conditions: Good

Leaks : No

◆ Bucket cylinder conditions: Good

Leaks : No

◆ Pins & Bushings boom conditions: Good

◆ Pins & Bushings stick conditions: Good

◆ Pins & Bushings bucket conditions: Good

◆ Bucket & Get conditions: Good

◆ Quick Coupler conditions: NA - Not applicable

◆ Auto Lube working conditions: No

Cabin and Tools

◆ Conditions internal cabin: Good

◆ Flashing presents issues: No

◆ Lights & Windshield present issues: Presents and functioning

◆ Air conditioning is working: Presente e funzionante

◆ Back & side camera conditions: Present and functioning

Check 81/2008

◆ Glass conditions:	Broken or Chipped - needs repair
◆ Lights conditions:	Excellent - no needs repair
◆ Rear view mirrors conditions:	Excellent - no needs repair
◆ Stepladders & handrails conditions:	Good
◆ Cameras conditions:	Excellent - no needs repair
◆ Flashing conditions:	Not functioning
◆ Safety belt conditions:	Present and expired
◆ Controls been modified:	No
◆ Presence of Exclusion Control Lever:	Yes
	If No, are control levers protected to accidental functionality? : Yes
◆ Are Tools Functional & Visible with tag:	Yes
◆ Canopy completed and comes with keys and bolt:	Yes
◆ All Pipes with no damage e/o scratches:	Yes
◆ Batteries box shielded:	Yes
◆ Acoustic alarm works properly:	Yes
◆ Boardwalk presence:	Not present

Valutazione Macchina

★ Non Funzionante (NF)

La macchina si presenta non funzionante e/o in pessime condizioni. Macchina da demolire o venduta per parti di ricambio. La macchina NON è in sicurezza.

★★ Scarso (S)

La macchina è in cattivo stato e può presentare visibili rotture e/o crepe su tutta la struttura. Per il suo ottimale funzionamento, o per essere avviata, può necessitare di importanti riparazioni a carro/gomme, perdite d'olio, riverniciatura completa, componenti principali, messa in sicurezza.

★★★ Buono (B)

La macchina si presenta in buone condizioni sia estetiche che di funzionamento. Carro/Gomme hanno orientativamente un 30/40% di vita residua. La macchina non presenta importanti rotture e/o perdite d'olio. La macchina è pronta per lavorare "AS IS" anche se potrebbe richiedere piccoli interventi di riparazione/migliorie. La macchina è in sicurezza.

★★★★ Molto Buono (O)

La macchina si presenta in condizioni molto buone, non ha più di 5 anni e/o 5000 ore lavorate. Non presenta problemi strutturali e può essere preparata esteticamente per renderla "quasi nuova". Componenti principali non inferiori al 50/60% di vita residua, macchina in sicurezza.

★★★★★ Eccellente (E)

La macchina si presenta in condizioni eccellenti, prossime al nuovo. Componenti principali non inferiori al 70/80% di vita residua, macchina in sicurezza.

Machine Rating

★ Not Working (NW)

Machine not operational or in really bad conditions. Machine has to be demolished or sold as a "parts". Machine not in security conditions.

★★ Poor (P)

Machine in bad condition, got visible cracks or repairable structural issues. Machine is operational but, in order to work properly, it may need significant repairs to tyres/truck, paint, pins and/or bushings, power train, hydraulic system.

★★★ Good (G)

Machine is in good condition and operational, with no structural issues. Tyres/Track around 30/40% of residual life. No relevant hydraulic leaks, pins/bushings with normal wear, frame may need to be repainted. Machine is ready to work "AS IS", it may need minor repairs for a better performance. Machine in security conditions or easy to be in safety condition.

★★★★ Very Good (VG)

Machine is in very good conditions, with no more of 5 years and/or 5000 working hours. No structural issues; painting condition is almost perfect. May need an easy check to be sold as "Brand New". Main components with 50/60% of life residue. Machine in security conditions.

★★★★★ Excellent (E)

Machine is in excellent condition, comparable to a new one. Main components-with 70/80% of life residue. Machine in security conditions.