

SALES REPORT: CATERPILLAR 374F - SN DNM00266 - Year 2014

This Report is a summary about observations comes out from technical inspection done by our specialised technician.

GENERAL CONDITIONS

MACHINE DATA

Model: 374F

Family: MEDIUM EXCAVATOR

Serial Number: DNM00266

Order Number MU/MM: MU00787923

Construction year: 2014

Hour meter: 17945

General residual conditions Truck/Tyres: 30 %

Machine main application: Basic application

Location: Conto deposito c/o Fornitore

Rating: ★★☆☆☆

Public price: Ask

MACHINE CONFIGURATION

● Machine type Mass Excavator ● Boom type Mono boom ● Boom check valves ● Stick check valves ● Bucket Rock/Stone 4,5m3 Get Teeth ● Truck type Mechanic extendible ● General Truck Residual 30% ● Cabin type Fixed standard ● Cabin fog Front superiore ● Air Conditioning system ● Product Link ● 73100 Kg ● CE Mark ● CE Certificate ● Use and maintenance manual

MACHINE PHOTOS

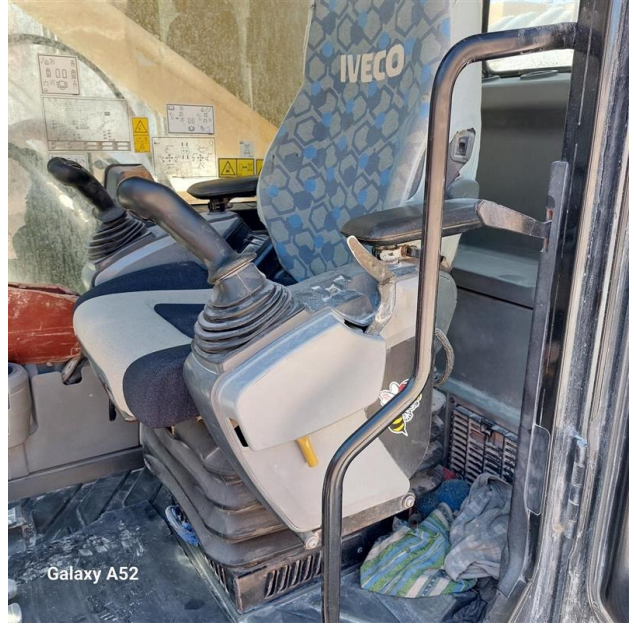
◆ Il contaore è:

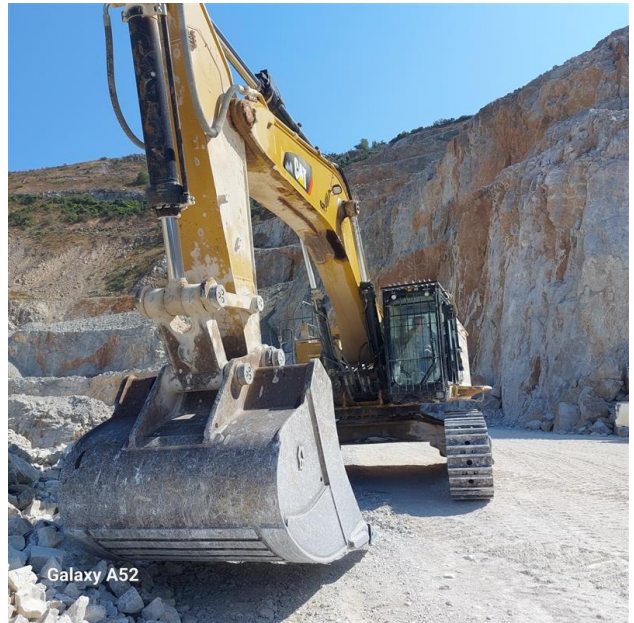
Funzionante

◆ Annotazioni sul:

Macchina smontata per riparazione , rottura sella macchina su attacco boom . Faremo riparazione secondo specifiche cat













GENERAL APPEARANCE

◆ Painting Conditions	Good
◆ Counterweight conditions:	Good
◆ Frame/Bumper conditions:	Good

TRUCK

◆ Sprockets residual:	30
◆ Front idler wheel residual:	40
◆ Rollers upper/bottom residual:	30
◆ Chains residual:	40

Right side

◆ Door conditions (right):	Good
----------------------------	------

◆ Spar conditions: Good

Left side

◆ Door conditions (left): Good

◆ Door conditions (left): Good

◆ Spar conditions (left): Good

◆ Hood/Armor bottom conditions: Present and intact

Functionality

Engine & electrical system functionality

◆ In quale stato è stata visionata la macchina: Spenta e ferma

◆ Engine working conditions: Good

◆ Engine with oil leaks: Yes

If Yes, where : Ttasudamenti piccoli visti con tecnico su motore

◆ Engine presents blowby: No

◆ Oil-Water presence: No

◆ Engine present smokiness: No

◆ Radiator conditions: Good

◆ Starter motor conditions: Good

◆ Batteries/Cables conditions: Good

◆ Presence of electrical fault: No

Functionality drive and rotation

◆ Hydraulic pump conditions:	Good
<hr/>	
◆ Engine rotation conditions:	Good
<hr/>	
◆ Engine travel conditions:	Good
<hr/>	
◆ Final drives conditions:	Good
<hr/>	
◆ Hydraulic joint conditions:	Good
	Presence of leaks : No
<hr/>	
◆ Hydraulic joint conditions:	Good
	Presence of leaks : No
<hr/>	

Linkage Group

◆ Hydraulic conditions linkage group:	No
<hr/>	
◆ Boom structure:	Good
	Presence of welding/cracks : No
<hr/>	
◆ Stick structure:	Good
	Presence of welding/cracks : No
<hr/>	
◆ Flexible pipes conditions:	Good
<hr/>	
◆ Boom cylinders conditions:	Good
	Leaks : No
<hr/>	
◆ Stick cylinder conditions:	Good
	Leaks : No
<hr/>	
◆ Bucket cylinder conditions:	Good
	Leaks : No
<hr/>	
◆ Pins & Bushings boom conditions:	Good

-
- ◆ Pins & Bushings stick conditions: Good

 - ◆ Pins & Bushings bucket conditions: Good

 - ◆ Bucket & Get conditions: Good

 - ◆ Quick Coupler conditions: NA - Not applicable

 - ◆ Auto Lube working conditions: No

 - ◆ Annotazione sul gruppo caricatore: Rotta la sella di attacco boom come già scritto
-

Cabin and Tools

- ◆ Conditions internal cabin: Good

 - ◆ Flashing presents issues: No

 - ◆ Lights & Windshield present issues: Presents and functioning

 - ◆ Air conditioning is working: Presente e funzionante

 - ◆ Back & side camera conditions: Present and functioning
-

Check 81/2008

- ◆ Glass conditions: Broken or Chipped - needs repair

 - ◆ Lights conditions: Excellent - no needs repair

 - ◆ Rear view mirrors conditions: Excellent - no needs repair

 - ◆ Stepladders & handrails conditions: Good

 - ◆ Cameras conditions: Excellent - no needs repair
-

◆ Flashing conditions:	Not functioning
◆ Safety belt conditions:	Present and expired
◆ Controls been modified:	No
◆ Presence of Exclusion Control Lever:	Yes
◆ Are Tools Functional & Visible with tag:	Yes
◆ Canopy completed and comes with keys and bolt:	Yes
◆ All Pipes with no damage e/o scratches:	No
◆ Batteries box shielded:	Yes
◆ Acoustic alarm works properly:	Yes
◆ Boardwalk presence:	Present and functioning

Valutazione Macchina

★ Non Funzionante (NF)

La macchina si presenta non funzionante e/o in pessime condizioni. Macchina da demolire o venduta per parti di ricambio. La macchina NON è in sicurezza.

★★ Scarso (S)

La macchina è in cattivo stato e può presentare visibili rotture e/o crepe su tutta la struttura. Per il suo ottimale funzionamento, o per essere avviata, può necessitare di importanti riparazioni a carro/gomme, perdite d'olio, riverniciatura completa, componenti principali, messa in sicurezza.

★★★ Buono (B)

La macchina si presenta in buone condizioni sia estetiche che di funzionamento. Carro/Gomme hanno orientativamente un 30/40% di vita residua. La macchina non presenta importanti rotture e/o perdite d'olio. La macchina è pronta per lavorare "AS IS" anche se potrebbe richiedere piccoli interventi di riparazione/migliorie. La macchina è in sicurezza.

★★★★ Molto Buono (O)

La macchina si presenta in condizioni molto buone, non ha più di 5 anni e/o 5000 ore lavorate. Non presenta problemi strutturali e può essere preparata esteticamente per renderla "quasi nuova". Componenti principali non inferiori al 50/60% di vita residua, macchina in sicurezza.

★★★★★ Eccellente (E)

La macchina si presenta in condizioni eccellenti, prossime al nuovo. Componenti principali non inferiori al 70/80% di vita residua, macchina in sicurezza.

Machine Rating

★ Not Working (NW)

Machine not operational or in really bad conditions. Machine has to be demolished or sold as a "parts". Machine not in security conditions.

★★ Poor (P)

Machine in bad condition, got visible cracks or repairable structural issues. Machine is operational but, in order to work properly, it may need significant repairs to tyres/truck, paint, pins and/or bushings, power train, hydraulic system.

★★★ Good (G)

Machine is in good condition and operational, with no structural issues. Tyres/Track around 30/40% of residual life. No relevant hydraulic leaks, pins/bushings with normal wear, frame may need to be repainted. Machine is ready to work "AS IS", it may need minor repairs for a better performance. Machine in security conditions or easy to be in safety condition.

★★★★ Very Good (VG)

Machine is in very good conditions, with no more of 5 years and/or 5000 working hours. No structural issues; painting condition is almost perfect. May need an easy check to be sold as "Brand New". Main components with 50/60% of life residue. Machine in security conditions.

★★★★★ Excellent (E)

Machine is in excellent condition, comparable to a new one. Main components-with 70/80% of life residue. Machine in security conditions.