

SALES REPORT: CATERPILLAR 323F SA - SN FA210### - Year 2020

This Report is a summary about observations came out from technical inspection done by our specialised technician.

GENERAL CONDITIONS

MACHINE DATA

Model: 323F SA

Family: MEDIUM EXCAVATOR

Serial Number: FA210###

Order Number MU/MM: MU00796987

Construction year: 2020

Hour meter: 5643

General residual conditions Truck/Tyres: 40 %

Machine main application: Basic application

Machine availability date : 15/11/2025

Location: Coming in

Rating: ★★☆☆☆

Public price: 145.000 €

MACHINE CONFIGURATION

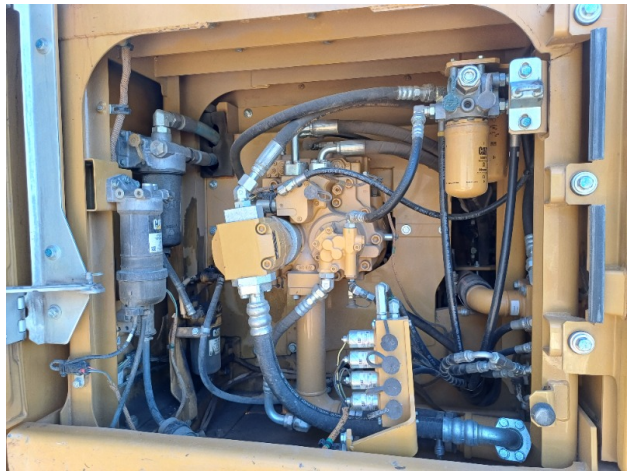
- Machine type Standard
- Boom type Triple boom
- Boom check valves
- Stick check valves
- Plant features Versatility
- Quick coupler Hydraulic VTN tipo LIEBHERR SW48 - Perdita di olio dal cilindro di blocco, gancio di sicurezza escluso
- Bucket Standard 1300 Get Teeth
- Truck type SA/HD (heavy)
- General Truck Residual 40%
- Cabin type Fixed standard
- Cabin fog Front superiore
- Air Conditioning system
- Product Link
- 25600 Kg
- CE Mark
- CE Certificate
- Use and maintenance manual

MACHINE PHOTOS

◆ Il contaore è:

Funzionante









GENERAL APPEARANCE

◆ Painting Conditions	Poor
◆ Counterweight conditions:	Poor
◆ Frame/Bumper conditions:	Poor

TRUCK

◆ Sprockets residual:	40
◆ Front idler wheel residual:	50
◆ Rollers upper/bottom residual:	40
◆ Chains residual:	50

Right side

◆ Door conditions (right):	Good
◆ Spar conditions:	Good
◆ Other issues:	BOTTA SU COFANATURA DX

Left side

- ◆ Door conditions (left): Good

- ◆ Door conditions (left): Good

- ◆ Spar conditions (left): Good

- ◆ Hood/Armor bottom conditions: Present and bash

Functionality

Engine & electrical system functionality

- ◆ In quale stato è stata visionata la macchina: Accesa e funzionante "al lavoro"

- ◆ Engine working conditions: Very good

- ◆ Engine with oil leaks: Yes
If Yes, where : Attacco rapido, cilindro di chiusura

- ◆ Engine presents blowby: No

- ◆ Oil-Water presence: No

- ◆ Engine present smokiness: No

- ◆ Radiator conditions: Excellent

- ◆ Starter motor conditions: Excellent

- ◆ Batteries/Cables conditions: Excellent

- ◆ Presence of electrical fault: No

Functionality drive and rotation

- ◆ Hydraulic pump conditions:
Very good

- ◆ Engine rotation conditions:
Good

- ◆ Engine travel conditions:
Good

- ◆ Final drives conditions:
Good

- ◆ Hydraulic joint conditions:
Good

- Presence of leaks : No

- ◆ Hydraulic joint conditions:
Good

- Presence of leaks : No

Linkage Group

- ◆ Hydraulic conditions linkage group:
No

- ◆ Boom structure:
Good

- Presence of welding/cracks : No

- ◆ Stick structure:
Good

- Presence of welding/cracks : No

- ◆ Flexible pipes conditions:
Good

- ◆ Boom cylinders conditions:
Good

- Leaks : No

- ◆ Stick cylinder conditions:
Good

- Leaks : No

- ◆ Bucket cylinder conditions:
Good

- Leaks : No

- ◆ Pins & Bushings boom conditions:
Good

◆ Pins & Bushings stick conditions:	Poor
◆ Pins & Bushings bucket conditions:	Poor
◆ Bucket & Get conditions:	Good
◆ Quick Coupler conditions:	Poor
◆ Auto Lube working conditions:	No

Cabin and Tools

◆ Conditions internal cabin:	Very good
◆ Flashing presents issues:	No
◆ Lights & Windshield present issues:	Presents and functioning
◆ Air conditioning is working:	Presente e funzionante
◆ Back & side camera conditions:	Present and functioning

Check 81/2008

◆ Glass conditions:	Excellent - no needs repair
◆ Lights conditions:	Excellent - no needs repair
◆ Rear view mirrors conditions:	Excellent - no needs repair
◆ Stepladders & handrails conditions:	Very good
◆ Cameras conditions:	Excellent - no needs repair
◆ Flashing conditions:	Not functioning

◆ Safety belt conditions:	Present and expired
◆ Controls been modified:	No
◆ Presence of Exclusion Control Lever:	Yes
	If No, are control levers protected to accidental functionality? : Yes
◆ Are Tools Functional & Visible with tag:	Yes
◆ Canopy completed and comes with keys and bolt:	Yes
◆ All Pipes with no damage e/o scratches:	Yes
◆ Batteries box shielded:	Yes
◆ Acoustic alarm works properly:	Yes
◆ Boardwalk presence:	Present and functioning

Valutazione Macchina

★ Non Funzionante (NF)

La macchina si presenta non funzionante e/o in pessime condizioni. Macchina da demolire o venduta per parti di ricambio. La macchina NON è in sicurezza.

★★ Scarso (S)

La macchina è in cattivo stato e può presentare visibili rotture e/o crepe su tutta la struttura. Per il suo ottimale funzionamento, o per essere avviata, può necessitare di importanti riparazioni a carro/gomme, perdite d'olio, riverniciatura completa, componenti principali, messa in sicurezza.

★★★ Buono (B)

La macchina si presenta in buone condizioni sia estetiche che di funzionamento. Carro/Gomme hanno orientativamente un 30/40% di vita residua. La macchina non presenta importanti rotture e/o perdite d'olio. La macchina è pronta per lavorare "AS IS" anche se potrebbe richiedere piccoli interventi di riparazione/migliorie. La macchina è in sicurezza.

★★★★ Molto Buono (O)

La macchina si presenta in condizioni molto buone, non ha più di 5 anni e/o 5000 ore lavorate. Non presenta problemi strutturali e può essere preparata esteticamente per renderla "quasi nuova". Componenti principali non inferiori al 50/60% di vita residua, macchina in sicurezza.

★★★★★ Eccellente (E)

La macchina si presenta in condizioni eccellenti, prossime al nuovo. Componenti principali non inferiori al 70/80% di vita residua, macchina in sicurezza.

Machine Rating

★ Not Working (NW)

Machine not operational or in really bad conditions. Machine has to be demolished or sold as a "parts". Machine not in security conditions.

★★ Poor (P)

Machine in bad condition, got visible cracks or repairable structural issues. Machine is operational but, in order to work properly, it may need significant repairs to tyres/truck, paint, pins and/or bushings, power train, hydraulic system.

★★★ Good (G)

Machine is in good condition and operational, with no structural issues. Tyres/Track around 30/40% of residual life. No relevant hydraulic leaks, pins/bushings with normal wear, frame may need to be repainted. Machine is ready to work "AS IS", it may need minor repairs for a better performance. Machine in security conditions or easy to be in safety condition.

★★★★ Very Good (VG)

Machine is in very good conditions, with no more of 5 years and/or 5000 working hours. No structural issues; painting condition is almost perfect. May need an easy check to be sold as "Brand New". Main components with 50/60% of life residue. Machine in security conditions.

★★★★★ Excellent (E)

Machine is in excellent condition, comparable to a new one. Main components-with 70/80% of life residue. Machine in security conditions.