

## SALES REPORT: ATLAS 2502C#KATLS - SN M301### - Year 2021

This Report is a summary about observations comes out from technical inspection done by our specialised technician.

### GENERAL CONDITIONS

---

### MACHINE DATA

---

**Model:** 2502C#KATLS

**Family:** MEDIUM EXCAVATOR

**Serial Number:** M301###

**Order Number MU/MM:** MU00802931

**Construction year:** 2021

**Hour meter:** 5207

**General residual conditions Truck/Tyres:** 80 %

**Machine main application:** Industry - not corrosive field

**Machine availability date :** 27/12/2025

**Location:** Coming in

**Rating:** ★★☆☆☆

**Public price:** Ask

### MACHINE CONFIGURATION

---

• Machine type Material Handling MH • Boom type Mono boom • Boom check valves • Stick check valves • Plant features Hammer/Crusher line • Truck type Fixed • General Truck Residual 80% Il cliente NON rende il polipo • Cabin type Hydraulic lift • Cabin fog Front superiore • 26400 Kg • CE Mark • CE Certificate • Use and maintenance manual

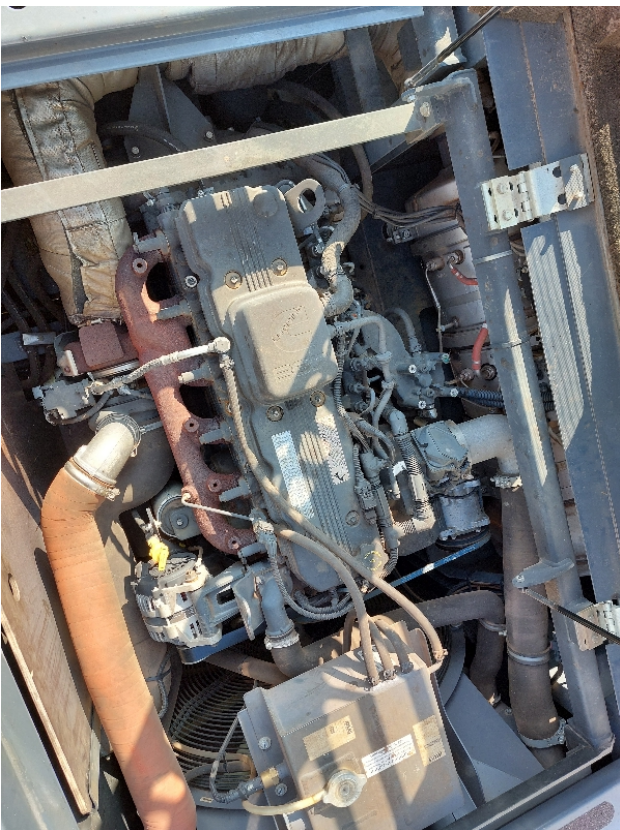
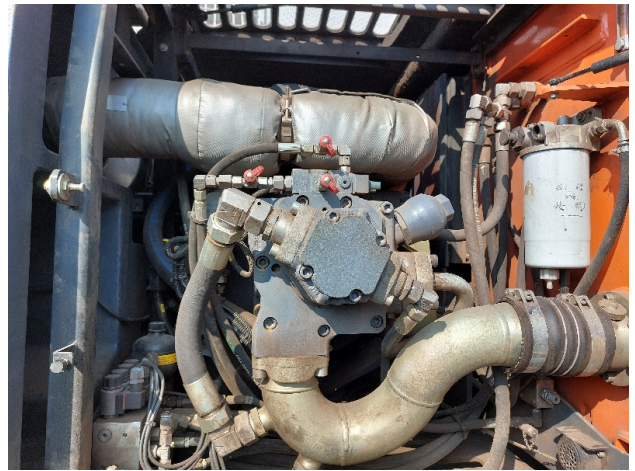
**MACHINE PHOTOS**

---

◆ Il contaore è:

Funzionante







## GENERAL APPEARANCE

◆ Painting Conditions	Very Good
◆ Counterweight conditions:	Very good
◆ Frame/Bumper conditions:	Very Good

## TRUCK

---

◆ Sprockets residual:	80
◆ Front idler wheel residual:	1
◆ Rollers upper/bottom residual:	1
◆ Chains residual:	1

---

### Right side

---

◆ Door conditions (right):	Very good
◆ Spar conditions:	Very good

---

### Left side

---

◆ Door conditions (left):	Very good
◆ Door conditions (left):	Very good
◆ Spar conditions (left):	Very good
◆ Hood/Armor bottom conditions:	Present and intact

---

### Functionality

---

#### Engine & electrical system functionality

---

◆ In quale stato è stata visionata la macchina:	Accesa e funzionante "al lavoro"
◆ Engine working conditions:	Very good
◆ Engine with oil leaks:	No

---

- ◆ Engine presents blowby: No

---
- ◆ Oil-Water presence: No

---
- ◆ Engine present smokiness: No

---
- ◆ Radiator conditions: Very good

---
- ◆ Starter motor conditions: Very good

---
- ◆ Batteries/Cables conditions: Very good

---
- ◆ Presence of electrical fault: No

---
- ◆ Annotazioni su Verificare impianto aria condizionata

---

**Functionality drive and rotation**

---

- ◆ Hydraulic pump conditions: Good

---
- ◆ Engine rotation conditions: Good

---
- ◆ Engine travel conditions: Good

---
- ◆ Final drives conditions: Good

---
- ◆ Hydraulic joint conditions: Good  
Presence of leaks : No

---
- ◆ Hydraulic joint conditions: Good  
Presence of leaks : No

---

**Linkage Group**

---

- ◆ Hydraulic conditions linkage group: No

---
- ◆ Boom structure: Good

Presence of welding/cracks : No

◆ Stick structure: Good

Presence of welding/cracks : No

◆ Flexible pipes conditions: Good

◆ Boom cylinders conditions: Good

Leaks : No

◆ Stick cylinder conditions: Good

Leaks : No

◆ Bucket cylinder conditions: NA - Not applicable

Leaks : No

◆ Pins & Bushings boom conditions: Good

◆ Pins & Bushings stick conditions: Good

◆ Pins & Bushings bucket conditions: NA - Not applicable

◆ Bucket & Get conditions: NA - Not applicable

◆ Quick Coupler conditions: NA - Not applicable

◆ Auto Lube working conditions: No

## Cabin and Tools

◆ Conditions internal cabin: Good

◆ Flashing presents issues: Yes

◆ Lights & Windshield present issues: Presents and functioning

◆ Air conditioning is working: Presente e non funzionante

◆ Back & side camera conditions: Present and functioning

### Check 81/2008

◆ Glass conditions:	Excellent - no needs repair
◆ Lights conditions:	Excellent - no needs repair
◆ Rear view mirrors conditions:	Excellent - no needs repair
◆ Stepladders & handrails conditions:	Good
◆ Cameras conditions:	Excellent - no needs repair
◆ Flashing conditions:	Present and functioning
◆ Safety belt conditions:	Present and expired
◆ Controls been modified:	No
◆ Presence of Exclusion Control Lever:	Yes
	If No, are control levers protected to accidental functionality? : Yes
◆ Are Tools Functional & Visible with tag:	Yes
◆ Canopy completed and comes with keys and bolt:	Yes
◆ All Pipes with no damage e/o scratches:	No
◆ Batteries box shielded:	Yes
◆ Acoustic alarm works properly:	Yes
◆ Boardwalk presence:	Present and functioning
◆ Annotazioni su:	Cambia per motivi fiscali

## Valutazione Macchina

### ★ Non Funzionante (NF)

La macchina si presenta non funzionante e/o in pessime condizioni. Macchina da demolire o venduta per parti di ricambio. La macchina NON è in sicurezza.

### ★★ Scarso (S)

La macchina è in cattivo stato e può presentare visibili rotture e/o crepe su tutta la struttura. Per il suo ottimale funzionamento, o per essere avviata, può necessitare di importanti riparazioni a carro/gomme, perdite d'olio, riverniciatura completa, componenti principali, messa in sicurezza.

### ★★★ Buono (B)

La macchina si presenta in buone condizioni sia estetiche che di funzionamento. Carro/Gomme hanno orientativamente un 30/40% di vita residua. La macchina non presenta importanti rotture e/o perdite d'olio. La macchina è pronta per lavorare "AS IS" anche se potrebbe richiedere piccoli interventi di riparazione/migliorie. La macchina è in sicurezza.

### ★★★★ Molto Buono (O)

La macchina si presenta in condizioni molto buone, non ha più di 5 anni e/o 5000 ore lavorate. Non presenta problemi strutturali e può essere preparata esteticamente per renderla "quasi nuova". Componenti principali non inferiori al 50/60% di vita residua, macchina in sicurezza.

### ★★★★★ Eccellente (E)

La macchina si presenta in condizioni eccellenti, prossime al nuovo. Componenti principali non inferiori al 70/80% di vita residua, macchina in sicurezza.

## Machine Rating

### ★ Not Working (NW)

Machine not operational or in really bad conditions. Machine has to be demolished or sold as a "parts". Machine not in security conditions.

### ★★ Poor (P)

Machine in bad condition, got visible cracks or repairable structural issues. Machine is operational but, in order to work properly, it may need significant repairs to tyres/truck, paint, pins and/or bushings, power train, hydraulic system.

### ★★★ Good (G)

Machine is in good condition and operational, with no structural issues. Tyres/Track around 30/40% of residual life. No relevant hydraulic leaks, pins/bushings with normal wear, frame may need to be repainted. Machine is ready to work "AS IS", it may need minor repairs for a better performance. Machine in security conditions or easy to be in safety condition.

### ★★★★ Very Good (VG)

Machine is in very good conditions, with no more of 5 years and/or 5000 working hours. No structural issues; painting condition is almost perfect. May need an easy check to be sold as "Brand New". Main components with 50/60% of life residue. Machine in security conditions.

### ★★★★★ Excellent (E)

Machine is in excellent condition, comparable to a new one. Main components-with 70/80% of life residue. Machine in security conditions.