

SALES REPORT: CATERPILLAR 249D - SN GWR03036 - Year 2019

This Report is a summary about observations came out from technical inspection done by our specialised technician.

GENERAL CONDITIONS

MACHINE DATA

Model: 249D

Family: COMPACT TRACK LOADER

Serial Number: GWR03036

Order Number MU/MM: MU00805459

Construction year: 2019

Hour meter: 1584

General residual conditions Truck/Tyres: 80 %

Machine main application: Basic application

Location: Stock Off.Buniotto

Rating: ★★☆☆☆

Public price: Ask

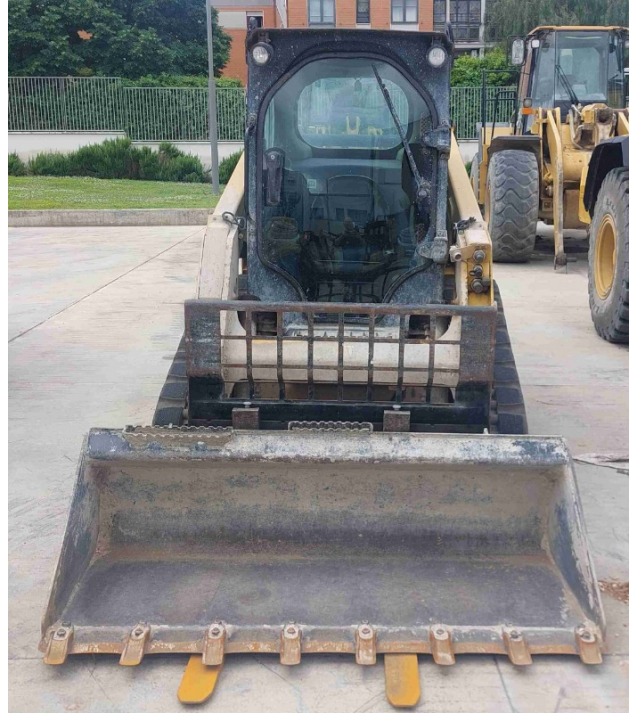
MACHINE CONFIGURATION

● Machine type Wasting configuration ● Rops Close ● Bucket Standard 0.33 Get Get ● Plant features ● General Truck Residual 80% ● Air Conditioning system ● Product Link ● Antitheft alarm ● 3500 Kg ● ● CE Mark ● CE Certificate ● Use and maintenance manual ● undefined ALH847 la macchina è in officina per un tagliando, fotografia senza benna, ma la macchina ha la benna std

MACHINE PHOTOS

◆ Il contaore e':

Funzionante







GENERAL APPEARANCE

- ◆ Painting Conditions Good

- ◆ Counterweight conditions Good

Needs painting? : No

- ◆ Frame/Bumper conditions Good

- ◆ Door conditions (left) Good

Truck

◆ Front Idler residual	80
◆ Front drive sprocket residual:	80
◆ Bottom rollers residual:	80
◆ Grousers residual:	60
◆ Chains residual:	60

Functionality

Engine & electrical system functionality

◆ In quale stato è stata visionata la macchina:	Accesa e provata per ispezione
◆ Engine working conditions:	Good
◆ Engine with oil leaks:	No
◆ Engine presents blowby:	No
◆ Oil-Water presence:	No
◆ Engine present smokiness:	No
◆ Radiator conditions:	Good
◆ Starter motor conditions:	Good
◆ Batteries/Cables conditions:	Good
◆ Presence of electrical fault:	Si

Functionality drive and rotation

- ◆ Hydraulic pump conditions: Good

- ◆ Brakes and steering clutches conditions: Good

- ◆ Engine travel conditions: Good

- ◆ Final drives conditions: Good

Linkage Group

- ◆ Tenuta idraulica braccio (il braccio cala): No

- ◆ Boom structure: Good

Photos

Presence of welding/cracks : No



- ◆ Flexible pipes conditions: Good

- ◆ Pins & Bushings boom conditions: Good

- ◆ Pins & Bushings stick conditions: Good

- ◆ Pins & Bushings bucket conditions: Good

- ◆ Bucket/Get conditions Good

- ◆ Funzionamento Impianto Ingrassaggio Automatico: No

Cabin and Tools

- ◆ Conditions internal cabin: Good

- ◆ Lights & Windshield present issues_ Presents and functioning

- ◆ Air contidioning & Filters conditions: Present and not functioning

- ◆ Back & side camera conditions: Present and functioning

Check 81/2008

- ◆ Glasses conditions: Excellent - no needs repair

- ◆ Lights conditions: Excellent - no needs repair

- ◆ Condizioni specchietti: Mancanti

- ◆ Stepladders & handrails conditions: Good

- ◆ Cameras conditions: Excellent - no needs repair

- ◆ Flashing conditions: Not functioning

- ◆ Safety belt conditions: Present and valid

- ◆ Controls been modified: No

- ◆ Presence of Exclusion Control Lever: Yes

- ◆ Are Tools Functional & Visible with tag: Yes

- ◆ Canopy completed and comes with keys and bolt: Yes

- ◆ All Pipes with no damage e/o scratches: Yes

- ◆ Batteries box shielded: Yes

- ◆ Acustic alarm works properly: Yes

- ◆ Boardwalk presence: Present and functioning

Valutazione Macchina

★ Non Funzionante (NF)

La macchina si presenta non funzionante e/o in pessime condizioni. Macchina da demolire o venduta per parti di ricambio. La macchina NON è in sicurezza.

★★ Scarso (S)

La macchina è in cattivo stato e può presentare visibili rotture e/o crepe su tutta la struttura. Per il suo ottimale funzionamento, o per essere avviata, può necessitare di importanti riparazioni a carro/gomme, perdite d'olio, riverniciatura completa, componenti principali, messa in sicurezza.

★★★ Buono (B)

La macchina si presenta in buone condizioni sia estetiche che di funzionamento. Carro/Gomme hanno orientativamente un 30/40% di vita residua. La macchina non presenta importanti rotture e/o perdite d'olio. La macchina è pronta per lavorare "AS IS" anche se potrebbe richiedere piccoli interventi di riparazione/migliorie. La macchina è in sicurezza.

★★★★ Molto Buono (O)

La macchina si presenta in condizioni molto buone, non ha più di 5 anni e/o 5000 ore lavorate. Non presenta problemi strutturali e può essere preparata esteticamente per renderla "quasi nuova". Componenti principali non inferiori al 50/60% di vita residua, macchina in sicurezza.

★★★★★ Eccellente (E)

La macchina si presenta in condizioni eccellenti, prossime al nuovo. Componenti principali non inferiori al 70/80% di vita residua, macchina in sicurezza.

Machine Rating

★ Not Working (NW)

Machine not operational or in really bad conditions. Machine has to be demolished or sold as a "parts". Machine not in security conditions.

★★ Poor (P)

Machine in bad condition, got visible cracks or repairable structural issues. Machine is operational but, in order to work properly, it may need significant repairs to tyres/truck, paint, pins and/or bushings, power train, hydraulic system.

★★★ Good (G)

Machine is in good condition and operational, with no structural issues. Tyres/Track around 30/40% of residual life. No relevant hydraulic leaks, pins/bushings with normal wear, frame may need to be repainted. Machine is ready to work "AS IS", it may need minor repairs for a better performance. Machine in security conditions or easy to be in safety condition.

★★★★ Very Good (VG)

Machine is in very good conditions, with no more of 5 years and/or 5000 working hours. No structural issues; painting condition is almost perfect. May need an easy check to be sold as "Brand New". Main components with 50/60% of life residue. Machine in security conditions.

★★★★★ Excellent (E)

Machine is in excellent condition, comparable to a new one. Main components-with 70/80% of life residue. Machine in security conditions.