

SALES REPORT: CATERPILLAR 242D3 - SN ME600776 - Year 2021

This Report is a summary about observations comes out from technical inspection done by our specialised technician.

GENERAL CONDITIONS

MACHINE DATA

Model: 242D3

Family: SKID STEER LOADER

Serial Number: ME600776

Order Number MU/MM: MU00812986

Construction year: 2021

Hour meter: 2930

General residual conditions Truck/Tyres: 80 %

Machine main application: Basic application

Location: Stock Off.Buniotto

Rating: ★★☆☆☆

Public price: Ask

MACHINE CONFIGURATION

- Machine type Wasting configuration • Rops Close • Bucket Standard 0,300 Get Get 1 BENNA • Plant features
- General Truck Residual 80% • Air Conditioning system • Product Link • Antitheft alarm • 3400 Kg • • CE Mark • CE Certificate • EPA Tag • Use and maintenance manual • undefined ALH990

MACHINE PHOTOS

◆ Il contaore e':

Funzionante







GENERAL APPEARANCE

- ◆ Painting Conditions Good

- ◆ Counterweight conditions Good

- Needs painting? : No

- ◆ Frame/Bumper conditions Good

- ◆ Door conditions (left) Good

Truck

- ◆ Front Idler residual 20

◆ Front drive sprocket residual: 20

Functionality

Engine & electrical system functionality

◆ In quale stato è stata visionata la macchina: Accesa e provata per ispezione

◆ Engine working conditions: Good

◆ Engine with oil leaks: No

◆ Engine presents blowby: No

◆ Oil-Water presence: No

◆ Engine present smokiness: No

◆ Radiator conditions: Good

◆ Starter motor conditions: Good

◆ Batteries/Cables conditions: Good

◆ Presence of electrical fault: Sì

Functionality drive and rotation

◆ Hydraulic pump conditions: Good

◆ Brakes and steering cluthces conditions: Good

◆ Engine travel conditions: Good

◆ Final drives conditions: Good

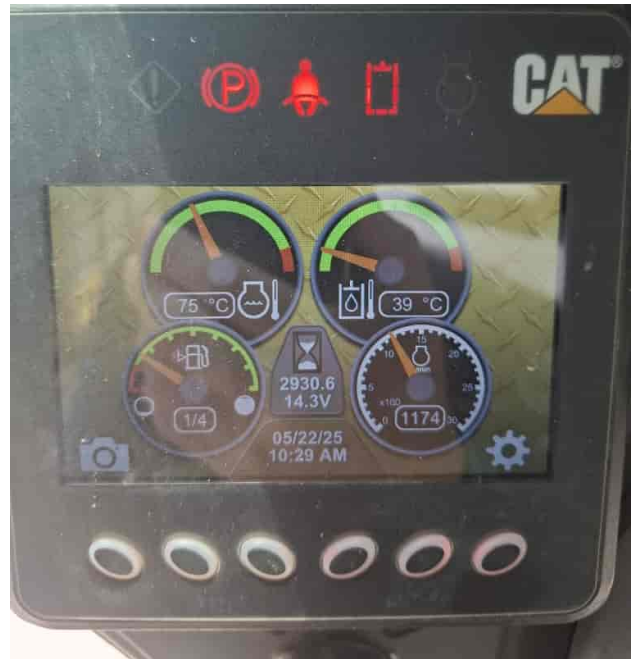
Linkage Group

◆ Tenuta idraulica braccio (il braccio cala): No

◆ Boom structure: Good

Photos

Presence of welding/cracks : No



◆ Flexible pipes conditions: Good

◆ Pins & Bushings boom conditions: Good

◆ Pins & Bushings stick conditions: Good

◆ Pins & Bushings bucket conditions: Good

◆ Bucket/Get conditions Good

◆ Funzionamento Impianto Ingrassaggio Automatico: No

Cabin and Tools

◆ Conditions internal cabin: Good

-
- ◆ Lights & Windshield present issues_ Present and not functioning

 - ◆ Air conditioning & Filters conditions: Presents and functioning

 - ◆ Back & side camera conditions: Present and functioning

Check 81/2008

- ◆ Glasses conditions: Excellent - no needs repair

- ◆ Lights conditions: Broken or Chipped - needs repair

- ◆ Condizioni specchietti: Eccellente - non necessita riparazione

- ◆ Stepladders & handrails conditions: Excellent

- ◆ Cameras conditions: Excellent - no needs repair

- ◆ Flashing conditions: Present and functioning

- ◆ Safety belt conditions: Present and valid

- ◆ Controls been modified: No

- ◆ Presence of Exclusion Control Lever: Yes

- ◆ Are Tools Functional & Visible with tag: Yes

- ◆ Canopy completed and comes with keys and bolt: Yes

- ◆ All Pipes with no damage e/o scratches: Yes

- ◆ Batteries box shielded: Yes

- ◆ Acoustic alarm works properly: Yes

- ◆ Boardwalk presence: Present and functioning

Valutazione Macchina

★ Non Funzionante (NF)

La macchina si presenta non funzionante e/o in pessime condizioni. Macchina da demolire o venduta per parti di ricambio. La macchina NON è in sicurezza.

★★ Scarso (S)

La macchina è in cattivo stato e può presentare visibili rotture e/o crepe su tutta la struttura. Per il suo ottimale funzionamento, o per essere avviata, può necessitare di importanti riparazioni a carro/gomme, perdite d'olio, riverniciatura completa, componenti principali, messa in sicurezza.

★★★ Buono (B)

La macchina si presenta in buone condizioni sia estetiche che di funzionamento. Carro/Gomme hanno orientativamente un 30/40% di vita residua. La macchina non presenta importanti rotture e/o perdite d'olio. La macchina è pronta per lavorare "AS IS" anche se potrebbe richiedere piccoli interventi di riparazione/migliorie. La macchina è in sicurezza.

★★★★ Molto Buono (O)

La macchina si presenta in condizioni molto buone, non ha più di 5 anni e/o 5000 ore lavorate. Non presenta problemi strutturali e può essere preparata esteticamente per renderla "quasi nuova". Componenti principali non inferiori al 50/60% di vita residua, macchina in sicurezza.

★★★★★ Eccellente (E)

La macchina si presenta in condizioni eccellenti, prossime al nuovo. Componenti principali non inferiori al 70/80% di vita residua, macchina in sicurezza.

Machine Rating

★ Not Working (NW)

Machine not operational or in really bad conditions. Machine has to be demolished or sold as a "parts". Machine not in security conditions.

★★ Poor (P)

Machine in bad condition, got visible cracks or repairable structural issues. Machine is operational but, in order to work properly, it may need significant repairs to tyres/truck, paint, pins and/or bushings, power train, hydraulic system.

★★★ Good (G)

Machine is in good condition and operational, with no structural issues. Tyres/Track around 30/40% of residual life. No relevant hydraulic leaks, pins/bushings with normal wear, frame may need to be repainted. Machine is ready to work "AS IS", it may need minor repairs for a better performance. Machine in security conditions or easy to be in safety condition.

★★★★ Very Good (VG)

Machine is in very good conditions, with no more of 5 years and/or 5000 working hours. No structural issues; painting condition is almost perfect. May need an easy check to be sold as "Brand New". Main components with 50/60% of life residue. Machine in security conditions.

★★★★★ Excellent (E)

Machine is in excellent condition, comparable to a new one. Main components-with 70/80% of life residue. Machine in security conditions.