

## SALES REPORT: CATERPILLAR 313FGC - SN GJD10099 - Year 2017

This Report is a summary about observations came out from technical inspection done by our specialised technician.

### GENERAL CONDITIONS

---

#### MACHINE DATA

---

**Model:** 313FGC

**Family:** SMALL EXCAVATOR

**Serial Number:** GJD10099

**Order Number MU/MM:** MU00814808

**Construction year:** 2017

**Hour meter:** 9971

**General residual conditions Truck/Tyres:** 30 %

**Machine main application:** Basic application

**Location:** Stock Bologna

**Rating:** ★★☆☆☆

**Public price:** Ask

#### MACHINE CONFIGURATION

---

● Machine type Standard ● Boom type Mono boom ● Boom check valves ● Stick check valves ● Plant features Hammer line ● Quick coupler Hydraulic ● Bucket Ditch Cleaning Bucket Get Cover Blade ● Truck type Fixed ● Blade ● General Truck Residual 30% ● Cabin type Fixed standard ● Air Conditioning system ● Product Link ● 13200 Kg ● CE Mark ● CE Certificate ● Use and maintenance manual

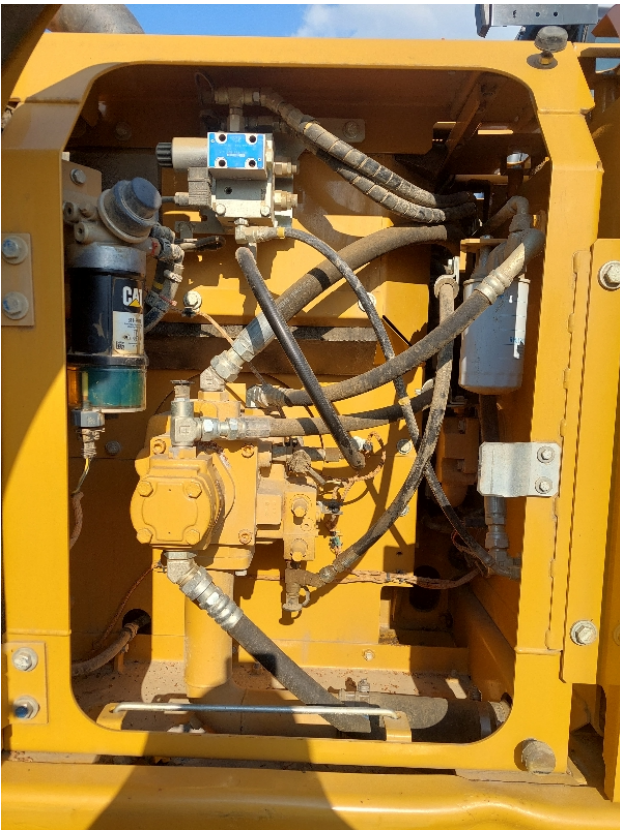
**MACHINE PHOTOS**

---

◆ Il contaore è:

Funzionante















**GENERAL APPEARANCE**

---

◆ Painting Conditions	Good
<hr/>	
◆ Counterweight conditions:	Good
<hr/>	
◆ Frame/Bumper conditions:	Good

**TRUCK**

---

◆ Sprockets residual:	30
<hr/>	
◆ Front idler wheel residual:	27
<hr/>	
◆ Rollers upper/bottom residual:	30
<hr/>	
◆ Chains residual:	30

### Right side

---

- ◆ Door conditions (right): Good
  - ◆ Spar conditions: Poor
- 

### Left side

---

- ◆ Door conditions (left): Very good
  - ◆ Door conditions (left): Good
  - ◆ Spar conditions (left): Good
  - ◆ Hood/Armor bottom conditions: Present and intact
- 

### Functionality

---

#### Engine & electrical system functionality

---

- ◆ In quale stato è stata visionata la macchina: Accesa e provata per ispezione
- ◆ Engine working conditions: Very good
- ◆ Engine with oil leaks: No
- ◆ Engine presents blowby: No
- ◆ Oil-Water presence: No
- ◆ Engine present smokiness: No
- ◆ Radiator conditions: Good
- ◆ Starter motor conditions: Very good

---

◆ Batteries/Cables conditions: Very good

---

◆ Presence of electrical fault: No

---

**Functionality drive and rotation**

---

◆ Hydraulic pump conditions: Very good

---

◆ Engine rotation conditions: Very good

---

◆ Engine travel conditions: Very good

---

◆ Final drives conditions: Very good

---

◆ Hydraulic joint conditions: Good

Presence of leaks : No

---

◆ Hydraulic joint conditions: Good

Presence of leaks : No

---

**Linkage Group**

---

◆ Hydraulic conditions linkage group: No

---

◆ Boom structure: Good

Presence of welding/cracks : No

---

◆ Stick structure: Good

Presence of welding/cracks : No

---

◆ Flexible pipes conditions: Good

---

◆ Boom cylinders conditions: Good

Leaks : No

---

◆ Stick cylinder conditions: Good

Leaks : No

---

◆ Bucket cylinder conditions:	Good
	Leaks : No
◆ Pins & Bushings boom conditions:	Poor
◆ Pins & Bushings stick conditions:	Poor
◆ Pins & Bushings bucket conditions:	Poor
◆ Bucket & Get conditions:	Good
◆ Quick Coupler conditions:	Good
◆ Auto Lube working conditions:	No

### Cabin and Tools

◆ Conditions internal cabin:	Good
◆ Flashing presents issues:	No
◆ Lights & Windshield present issues:	Presents and functioning
◆ Air conditioning is working:	Presente e funzionante
◆ Back & side camera conditions:	Present and functioning

### Check 81/2008

◆ Glass conditions:	Excellent - no needs repair
◆ Lights conditions:	Excellent - no needs repair
◆ Rear view mirrors conditions:	Excellent - no needs repair
◆ Stepladders & handrails conditions:	Very good

◆ Cameras conditions:	Excellent - no needs repair
◆ Flashing conditions:	Not functioning
◆ Safety belt conditions:	Present and valid
◆ Controls been modified:	No
◆ Presence of Exclusion Control Lever:	Yes
◆ Are Tools Functional & Visible with tag:	Yes
◆ Canopy completed and comes with keys and bolt:	Yes
◆ All Pipes with no damage e/o scratches:	Yes
◆ Batteries box shielded:	Yes
◆ Acoustic alarm works properly:	Yes
◆ Boardwalk presence:	Not present

## Valutazione Macchina

### ★ Non Funzionante (NF)

La macchina si presenta non funzionante e/o in pessime condizioni. Macchina da demolire o venduta per parti di ricambio. La macchina NON è in sicurezza.

### ★★ Scarso (S)

La macchina è in cattivo stato e può presentare visibili rotture e/o crepe su tutta la struttura. Per il suo ottimale funzionamento, o per essere avviata, può necessitare di importanti riparazioni a carro/gomme, perdite d'olio, riverniciatura completa, componenti principali, messa in sicurezza.

### ★★★ Buono (B)

La macchina si presenta in buone condizioni sia estetiche che di funzionamento. Carro/Gomme hanno orientativamente un 30/40% di vita residua. La macchina non presenta importanti rotture e/o perdite d'olio. La macchina è pronta per lavorare "AS IS" anche se potrebbe richiedere piccoli interventi di riparazione/migliorie. La macchina è in sicurezza.

### ★★★★ Molto Buono (O)

La macchina si presenta in condizioni molto buone, non ha più di 5 anni e/o 5000 ore lavorate. Non presenta problemi strutturali e può essere preparata esteticamente per renderla "quasi nuova". Componenti principali non inferiori al 50/60% di vita residua, macchina in sicurezza.

### ★★★★★ Eccellente (E)

La macchina si presenta in condizioni eccellenti, prossime al nuovo. Componenti principali non inferiori al 70/80% di vita residua, macchina in sicurezza.

## Machine Rating

### ★ Not Working (NW)

Machine not operational or in really bad conditions. Machine has to be demolished or sold as a "parts". Machine not in security conditions.

### ★★ Poor (P)

Machine in bad condition, got visible cracks or repairable structural issues. Machine is operational but, in order to work properly, it may need significant repairs to tyres/truck, paint, pins and/or bushings, power train, hydraulic system.

### ★★★ Good (G)

Machine is in good condition and operational, with no structural issues. Tyres/Track around 30/40% of residual life. No relevant hydraulic leaks, pins/bushings with normal wear, frame may need to be repainted. Machine is ready to work "AS IS", it may need minor repairs for a better performance. Machine in security conditions or easy to be in safety condition.

### ★★★★ Very Good (VG)

Machine is in very good conditions, with no more of 5 years and/or 5000 working hours. No structural issues; painting condition is almost perfect. May need an easy check to be sold as "Brand New". Main components with 50/60% of life residue. Machine in security conditions.

### ★★★★★ Excellent (E)

Machine is in excellent condition, comparable to a new one. Main components-with 70/80% of life residue. Machine in security conditions.