

SALES REPORT: KOMATSU PC450#KKOMA - SN K15### - Year 2006

This Report is a summary about observations came out from technical inspection done by our specialised technician.

GENERAL CONDITIONS

MACHINE DATA

Model: PC450#KKOMA

Family: MEDIUM EXCAVATOR

Serial Number: K15###

Order Number MU/MM: MU00817388

Construction year: 2006

Hour meter: 15621

General residual conditions Truck/Tyres: 40 %

Machine main application: Basic application

Machine availability date : 25/03/2026

Location: Coming in

Rating: ★★☆☆☆

Public price: Ask

MACHINE CONFIGURATION

● Machine type Demolition ● Boom type Demolition retrofit ● Boom check valves ● Stick check valves ● Plant features Hammer/Crusher line ● Bucket Standard 1600 Get Teeth ● Truck type Mechanic extendible ● General Truck Residual 40% ● Cabin type Hydraulic lift ● Cabin fog Front superiore ● Air Conditioning system ● 60000 Kg ● CE Mark ● CE Certificate ● Use and maintenance manual Cabina inclinabile idraulicamente, Carro allargabile meccanicamente da 3 mt a 3,60 mt Altezza braccio da demolizione mt. 30

MACHINE PHOTOS

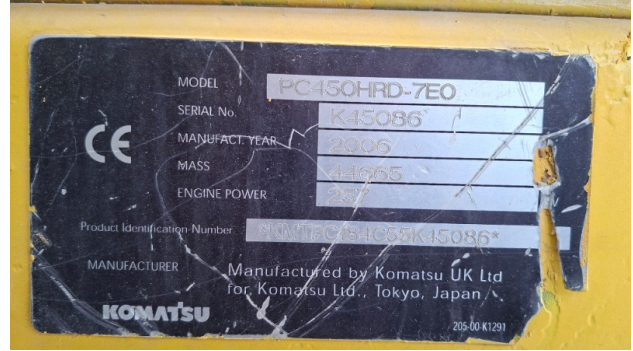
◆ Il contaore è:

Funzionante









GENERAL APPEARANCE

◆ Painting Conditions	Poor
◆ Counterweight conditions:	Poor
◆ Frame/Bumper conditions:	Good

TRUCK

◆ Sprockets residual:	30
◆ Front idler wheel residual:	40

◆ Rollers upper/bottom residual: 30

◆ Chains residual: 40

Right side

◆ Door conditions (right): Poor

◆ Spar conditions: Poor

◆ Other issues: DIVERSI GRAFFI

Left side

◆ Door conditions (left): Poor

◆ Door conditions (left): Poor

◆ Spar conditions (left): Poor

◆ Hood/Armor bottom conditions: Present and bash

Functionality

Engine & electrical system functionality

◆ In quale stato è stata visionata la macchina: Spenta e ferma

◆ Engine working conditions: Good

◆ Engine with oil leaks: No

If Yes, where : TRASUDI

◆ Engine presents blowby: No

- ◆ Oil-Water presence: No

- ◆ Engine present smokiness: No

- ◆ Radiator conditions: Good

- ◆ Starter motor conditions: Good

- ◆ Batteries/Cables conditions: Good

- ◆ Presence of electrical fault: No

SE SI, AGGIUNGERE DETTAGLI : IMPIANTO ELETTRICO DA CONTROLLARE

Functionality drive and rotation

- ◆ Hydraulic pump conditions: Good

- ◆ Engine rotation conditions: Good

- ◆ Engine travel conditions: Good

- ◆ Final drives conditions: Good

- ◆ Hydraulic joint conditions: Good

- Presence of leaks : No
- ◆ Hydraulic joint conditions: Good

- Presence of leaks : No

Linkage Group

- ◆ Hydraulic conditions linkage group: No

- ◆ Boom structure: Good

- Presence of welding/cracks : No
- ◆ Stick structure: Good

- Presence of welding/cracks : No

◆ Flexible pipes conditions:	Poor
◆ Boom cylinders conditions:	Poor Leaks : Yes
◆ Stick cylinder conditions:	Poor Leaks : Yes
◆ Bucket cylinder conditions:	Poor Leaks : Yes
◆ Pins & Bushings boom conditions:	Poor
◆ Pins & Bushings stick conditions:	Good
◆ Pins & Bushings bucket conditions:	Poor
◆ Bucket & Get conditions:	Good
◆ Quick Coupler conditions:	NA - Not applicable
◆ Auto Lube working conditions:	No

Cabin and Tools

◆ Conditions internal cabin:	Poor
	Other notes : SEDILE DA SISTEMARE
◆ Flashing presents issues:	No
◆ Lights & Windshield present issues:	Present and not functioning
◆ Air conditioning is working:	Presente e funzionante
◆ Back & side camera conditions:	Not functioning

◆ Glass conditions:	Excellent - no needs repair
◆ Lights conditions:	Broken or Chipped - needs repair
◆ Rear view mirrors conditions:	Broken or Chipped - needs repair
◆ Stepladders & handrails conditions:	Good
◆ Cameras conditions:	Broken or Chipped - needs repair
◆ Flashing conditions:	Not functioning
◆ Safety belt conditions:	Not present/Broken
◆ Controls been modified:	No
◆ Presence of Exclusion Control Lever:	Yes
◆ Are Tools Functional & Visible with tag:	Yes
◆ Canopy completed and comes with keys and bolt:	No
◆ All Pipes with no damage e/o scratches:	No
◆ Batteries box shielded:	Yes
◆ Acoustic alarm works properly:	Yes
◆ Boardwalk presence:	Not present

Valutazione Macchina

★ Non Funzionante (NF)

La macchina si presenta non funzionante e/o in pessime condizioni. Macchina da demolire o venduta per parti di ricambio. La macchina NON è in sicurezza.

★★ Scarso (S)

La macchina è in cattivo stato e può presentare visibili rotture e/o crepe su tutta la struttura. Per il suo ottimale funzionamento, o per essere avviata, può necessitare di importanti riparazioni a carro/gomme, perdite d'olio, riverniciatura completa, componenti principali, messa in sicurezza.

★★★ Buono (B)

La macchina si presenta in buone condizioni sia estetiche che di funzionamento. Carro/Gomme hanno orientativamente un 30/40% di vita residua. La macchina non presenta importanti rotture e/o perdite d'olio. La macchina è pronta per lavorare "AS IS" anche se potrebbe richiedere piccoli interventi di riparazione/migliorie. La macchina è in sicurezza.

★★★★ Molto Buono (O)

La macchina si presenta in condizioni molto buone, non ha più di 5 anni e/o 5000 ore lavorate. Non presenta problemi strutturali e può essere preparata esteticamente per renderla "quasi nuova". Componenti principali non inferiori al 50/60% di vita residua, macchina in sicurezza.

★★★★★ Eccellente (E)

La macchina si presenta in condizioni eccellenti, prossime al nuovo. Componenti principali non inferiori al 70/80% di vita residua, macchina in sicurezza.

Machine Rating

★ Not Working (NW)

Machine not operational or in really bad conditions. Machine has to be demolished or sold as a "parts". Machine not in security conditions.

★★ Poor (P)

Machine in bad condition, got visible cracks or repairable structural issues. Machine is operational but, in order to work properly, it may need significant repairs to tyres/truck, paint, pins and/or bushings, power train, hydraulic system.

★★★ Good (G)

Machine is in good condition and operational, with no structural issues. Tyres/Track around 30/40% of residual life. No relevant hydraulic leaks, pins/bushings with normal wear, frame may need to be repainted. Machine is ready to work "AS IS", it may need minor repairs for a better performance. Machine in security conditions or easy to be in safety condition.

★★★★ Very Good (VG)

Machine is in very good conditions, with no more of 5 years and/or 5000 working hours. No structural issues; painting condition is almost perfect. May need an easy check to be sold as "Brand New". Main components with 50/60% of life residue. Machine in security conditions.

★★★★★ Excellent (E)

Machine is in excellent condition, comparable to a new one. Main components-with 70/80% of life residue. Machine in security conditions.