

## SALES REPORT: HAAS HDWVD700#KHAAS - SN 33### - Year 2009

This Report is a summary about observations comes out from technical inspection done by our specialised technician.

### GENERAL CONDITIONS

---

### MACHINE DATA

---

**Model:** HDWVD700#KHAAS

**Family:** SHREDDER

**Serial Number:** 33###

**Order Number MU/MM:** MU00819127

**Construction year:** 2009

**Hour meter:** 11150

**General residual conditions Truck/Tyres:** %

**Machine main application:**

**Machine availability date :** 30/04/2026

**Location:** Coming in

**Rating:** ★★☆☆☆

**Public price:** Ask

### MACHINE CONFIGURATION

---

● Machine type Long Reach ● undefined ● undefined ● undefined ● 1 Kg ● CE Mark ● CE Certificate ● Use and maintenance manual ● AVAILABLE FROM APRIL

## ORIGINS & APPLICATION

---

◆ Machine Origins:

Trade In

## MACHINE PHOTOS

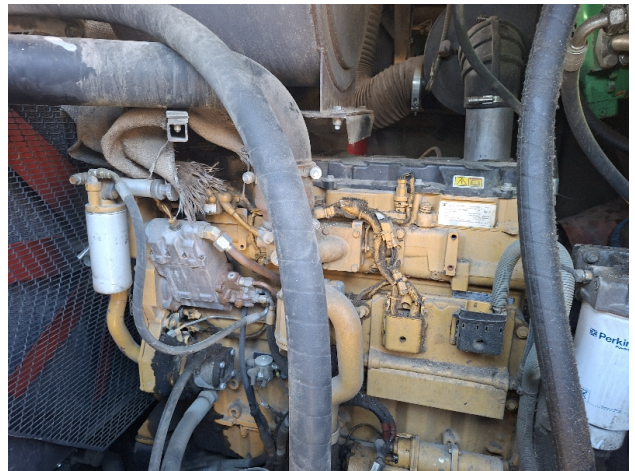
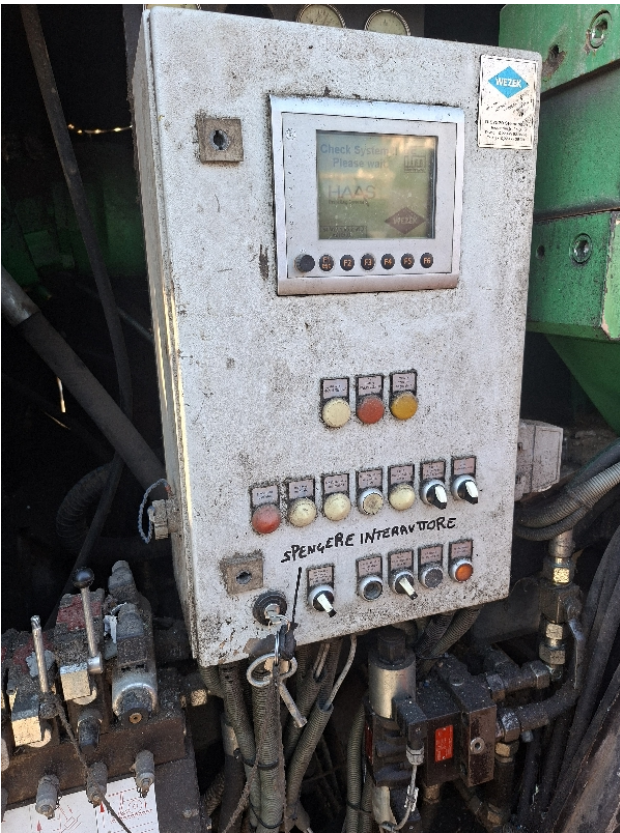
---

◆ Il contaore e':

Funzionante











## GENERAL APPEARANCE

---

◆ Painting Conditions Poor

---

## FRANTOIO

---

◆ Spar conditions: Good

---

◆ Alimentatore: NA - Non Applicabile

---

◆ Bocca del frantoio: Buono

---

◆ Usura mascelle: 30

---

◆ Scarico sotto frantoio: Buono

---

## NASTRI

---

- ◆ Nastro principale (tappeto, raschiatori, rulli): Buono

---

- ◆ Nastro laterale scarto: NA - Non Applicabile

---

- ◆ Deferrizzatore: Buono

---

- ◆ Sistema abbattimento polveri: NA - Non Applicabile

---

## CARRO

---

- ◆ Condizioni generali carro NA - Non Applicabile

---

## Functionality

---

- ◆ In quale stato è stata visionata la macchina: Accesa e provata per ispezione

---

## Engine & electrical system functionality

---

- ◆ Engine working conditions: Good

---

- ◆ Engine with oil leaks: No

---

- ◆ Engine presents blowby: No

---

- ◆ Engine present smokiness: No

---

- ◆ Radiator conditions: Good

---

- ◆ Starter motor conditions: Good

---

- ◆ Batteries/Cables conditions: Good

---

- ◆ Presence of electrical fault: Non presente

---

- ◆ Annotazioni su: Protezione radiatore rovinata

---

### Functionality drive and rotation

---

- ◆ Hydraulic pump conditions: Good

---

- ◆ Engine travel conditions: NA - Not applicable

---

- ◆ Annotazioni su Con trasudi

---

### Linkage Group

---

- ◆ Boom structure: Good

---

- ◆ Stick structure: Good

---

### Check 81/2008

---

- ◆ Lights conditions: Broken or Chipped - needs repair

---

- ◆ Condizioni specchietti: Mancanti

---

- ◆ Stepladders & handrails conditions: NA - Not applicable

---

- ◆ Cameras conditions: Broken or Chipped - needs repair

---

- ◆ Flashing conditions: Not functioning

---

- ◆ Controls been modified: No

---

- ◆ Presence of Exclusion Control Lever: Yes

---

- ◆ Are Tools Functional & Visible with tag: Yes

---

- ◆ Canopy completed and comes with keys and bolt: No

---

- ◆ All Pipes with no damage e/o scratches: Yes

---

◆ Batteries box shielded: Yes

---

◆ Acoustic alarm works properly: No

---

◆ Boardwalk presence: Not present

---

◆ Annotazioni su: Alcune cerniere degli sportelli rotti e sistemati alla meglio.

---

## Valutazione Macchina

### ★ Non Funzionante (NF)

La macchina si presenta non funzionante e/o in pessime condizioni. Macchina da demolire o venduta per parti di ricambio. La macchina NON è in sicurezza.

### ★★ Scarso (S)

La macchina è in cattivo stato e può presentare visibili rotture e/o crepe su tutta la struttura. Per il suo ottimale funzionamento, o per essere avviata, può necessitare di importanti riparazioni a carro/gomme, perdite d'olio, riverniciatura completa, componenti principali, messa in sicurezza.

### ★★★ Buono (B)

La macchina si presenta in buone condizioni sia estetiche che di funzionamento. Carro/Gomme hanno orientativamente un 30/40% di vita residua. La macchina non presenta importanti rotture e/o perdite d'olio. La macchina è pronta per lavorare "AS IS" anche se potrebbe richiedere piccoli interventi di riparazione/migliorie. La macchina è in sicurezza.

### ★★★★ Molto Buono (O)

La macchina si presenta in condizioni molto buone, non ha più di 5 anni e/o 5000 ore lavorate. Non presenta problemi strutturali e può essere preparata esteticamente per renderla "quasi nuova". Componenti principali non inferiori al 50/60% di vita residua, macchina in sicurezza.

### ★★★★★ Eccellente (E)

La macchina si presenta in condizioni eccellenti, prossime al nuovo. Componenti principali non inferiori al 70/80% di vita residua, macchina in sicurezza.

## Machine Rating

### ★ Not Working (NW)

Machine not operational or in really bad conditions. Machine has to be demolished or sold as a "parts". Machine not in security conditions.

### ★★ Poor (P)

Machine in bad condition, got visible cracks or repairable structural issues. Machine is operational but, in order to work properly, it may need significant repairs to tyres/truck, paint, pins and/or bushings, power train, hydraulic system.

### ★★★ Good (G)

Machine is in good condition and operational, with no structural issues. Tyres/Track around 30/40% of residual life. No relevant hydraulic leaks, pins/bushings with normal wear, frame may need to be repainted. Machine is ready to work "AS IS", it may need minor repairs for a better performance. Machine in security conditions or easy to be in safety condition.

### ★★★★ Very Good (VG)

Machine is in very good conditions, with no more of 5 years and/or 5000 working hours. No structural issues; painting condition is almost perfect. May need an easy check to be sold as "Brand New". Main components with 50/60% of life residue. Machine in security conditions.

### ★★★★★ Excellent (E)

Machine is in excellent condition, comparable to a new one. Main components-with 70/80% of life residue. Machine in security conditions.