

SALES REPORT: CATERPILLAR M318D MH - SN D9X00### - Year 2011

This Report is a summary about observations comes out from technical inspection done by our specialised technician.

GENERAL CONDITIONS

MACHINE DATA

Model: M318D MH

Family: WHEEL EXCAVATOR

Serial Number: D9X00###

Order Number MU/MM: MU00819299

Construction year: 2011

Hour meter: 6422

General residual conditions Truck/Tyres: 40 %

Machine main application: Industry - corrosive field

Machine availability date : 26/02/2026

Location: Coming in

Rating: ★★☆☆☆

Public price: Ask

MACHINE CONFIGURATION

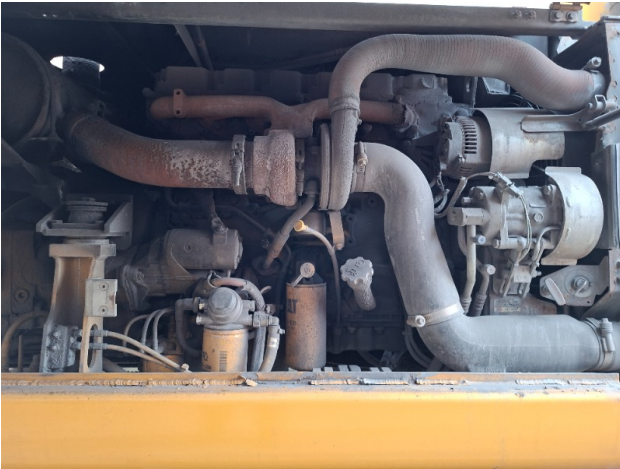
● Machine type Material Handling MH ● Boom type Mono boom ● Boom check valves ● Stick check valves ● Plant features Versatility ● Tyres type Twin Wheel ● General Tyres Residual 40 10.00 20 Master Solid ● Blade ● Stabilizers 4 Stabilizers ● Cabin type Hydraulic lift ● Cabin fog Front superiore ● Air Conditioning system ● Auto lube system ● Product Link ● 22950 Kg ● ● CE Mark ● CE Certificate ● Use and maintenance manual ● Registration book & Licence plate No Registration book & Licence plate ● AVAILABLE FROM MAY

MACHINE PHOTOS

◆ Il contaore e':

Funzionante







GENERAL APPEARANCE

◆ Painting Conditions	Good
◆ Counterweight conditions	Good
	Needs painting? : No
◆ Frame / Bumper conditions	Good

Tyres

- ◆ Front Tyres residual 40
 - ◆ Front Tyres residual 40
-

Right side

- ◆ Door conditions (right) Good
 - ◆ Spar conditions (right) Good
-

Left side

- ◆ Door conditions (left) Good
 - ◆ Door conditions (left) Good
 - ◆ Spar conditions (left) Good
 - ◆ Other notes Segni di corrosione nella parte inferiore della torretta
 - ◆ Hood / Armor bottom conditions Present and intact
-

Functionality

Engine & electrical system functionality

- ◆ In quale stato è stata visionata la macchina: Accesa e funzionante "al lavoro"
- ◆ Engine functionality conditions Good
- ◆ Engine with oil leaks No

◆ Engine presents blowby	No
◆ Oil-Water presence	No
◆ Engine present smokiness	No
◆ Radiator conditions	Very good
◆ Starter motor conditions	Good
◆ Batteries/Cables conditions	Good
◆ Presence of electrical fault	No
◆ Annotazioni sul: Sensore pressione olio rotto circa 15 gg fa. Macchina attualmente riparata con sensore nuovo, ma presenza di olio nel cablaggio elettrico	

Functionality drive and rotation

◆ Hydraulic pump conditions	Good
◆ Engine rotation conditions	Very good
◆ Engine travel conditions	Very good
◆ Final drives conditions	Very good
◆ Hydraulic joint conditions	Very good
	Presence of leaks : No
◆ Hydraulic joint conditions	Very good
	Presence of leaks : No
◆ Tenuta idraulica braccio (il braccio cala):	No

Linkage Group

◆ Hydraulic conditions linkage group (Boom is lowering?)	Yes
◆ Boom structure	Very good Presence of welding/cracks : No
◆ Stick structure	Very good Presence of welding/cracks : No
◆ Flexible pipes conditions	Very good
◆ Boom cylinders conditions	Very good Leaks : No
◆ Stick cylinder conditions	Very good Leaks : No
◆ Bucket / Grapple cylinder conditions	Good Leaks : No
◆ Pins & Bushings boom conditions	Very good
◆ Pins & Bushings stick conditions	Very good
◆ Pins & Bushings bucket conditions	Very good
◆ Bucket / Grapple & Get conditions	NA - Not applicable
◆ Quick Coupler conditions	NA - Not applicable
◆ Funzionamento Impianto Ingrassaggio Automatico:	Sì
◆ Annotazioni su:	Radiatore nuovo cambiato circa 200 ore fa.

Cabin and Tools

◆ Conditions internal cabin	Good
◆ Flashing presents issues	No

◆ Lights & Windshield present issues Presents and functioning

◆ Air conditioning & Filters conditions Presents and functioning

◆ Back & side camera conditions Not functioning

Check 81/2008

◆ Condizioni freni: Molto Buono

◆ Condizioni freno di Stazionamento: Molto Buono

◆ Glass conditions Excellent - no needs repair

◆ Lights conditions Excellent - no needs repair

◆ Rear view mirrors conditions Excellent - no needs repair

◆ Stepladders & handrails conditions Good

◆ Cameras conditions Excellent - no needs repair

◆ Flashing conditions Not functioning

◆ Safety belt conditions Present and valid

◆ Controls been modified No

◆ Presence of Exclusion Control Lever Yes

If No, are control levers protected to accidental functionality? : Yes

◆ Are Tools Functional & Visible with tag Yes

◆ Canopy completed and comes with keys and bolt Yes

◆ All Pipes with no damage e/o scratches Yes

◆ Batteries box shielded Yes

◆ Acoustic alarm works properly Yes

◆ Boardwalk presence Present and bashee

◆ Annotazioni su Presente anche copertura radiatore, smontata per sostituzione radiatore

Valutazione Macchina

★ Non Funzionante (NF)

La macchina si presenta non funzionante e/o in pessime condizioni. Macchina da demolire o venduta per parti di ricambio. La macchina NON è in sicurezza.

★★ Scarso (S)

La macchina è in cattivo stato e può presentare visibili rotture e/o crepe su tutta la struttura. Per il suo ottimale funzionamento, o per essere avviata, può necessitare di importanti riparazioni a carro/gomme, perdite d'olio, riverniciatura completa, componenti principali, messa in sicurezza.

★★★ Buono (B)

La macchina si presenta in buone condizioni sia estetiche che di funzionamento. Carro/Gomme hanno orientativamente un 30/40% di vita residua. La macchina non presenta importanti rotture e/o perdite d'olio. La macchina è pronta per lavorare "AS IS" anche se potrebbe richiedere piccoli interventi di riparazione/migliorie. La macchina è in sicurezza.

★★★★ Molto Buono (O)

La macchina si presenta in condizioni molto buone, non ha più di 5 anni e/o 5000 ore lavorate. Non presenta problemi strutturali e può essere preparata esteticamente per renderla "quasi nuova". Componenti principali non inferiori al 50/60% di vita residua, macchina in sicurezza.

★★★★★ Eccellente (E)

La macchina si presenta in condizioni eccellenti, prossime al nuovo. Componenti principali non inferiori al 70/80% di vita residua, macchina in sicurezza.

Machine Rating

★ Not Working (NW)

Machine not operational or in really bad conditions. Machine has to be demolished or sold as a "parts". Machine not in security conditions.

★★ Poor (P)

Machine in bad condition, got visible cracks or repairable structural issues. Machine is operational but, in order to work properly, it may need significant repairs to tyres/truck, paint, pins and/or bushings, power train, hydraulic system.

★★★ Good (G)

Machine is in good condition and operational, with no structural issues. Tyres/Track around 30/40% of residual life. No relevant hydraulic leaks, pins/bushings with normal wear, frame may need to be repainted. Machine is ready to work "AS IS", it may need minor repairs for a better performance. Machine in security conditions or easy to be in safety condition.

★★★★ Very Good (VG)

Machine is in very good conditions, with no more of 5 years and/or 5000 working hours. No structural issues; painting condition is almost perfect. May need an easy check to be sold as "Brand New". Main components with 50/60% of life residue. Machine in security conditions.

★★★★★ Excellent (E)

Machine is in excellent condition, comparable to a new one. Main components-with 70/80% of life residue. Machine in security conditions.