

SALES REPORT: CATERPILLAR 953D - SN LBP01### - Year 2014

This Report is a summary about observations came out from technical inspection done by our specialised technician.

GENERAL CONDITIONS

MACHINE DATA

Model: 953D

Family: LARGE TRACK LOADER

Serial Number: LBP01###

Order Number MU/MM: MU00819305

Construction year: 2014

Hour meter: 14140

General residual conditions Truck/Tyres: 40 %

Machine main application: Basic application

Machine availability date : 31/12/2040

Location: Coming in

Rating: ★★☆☆☆

Public price: Ask

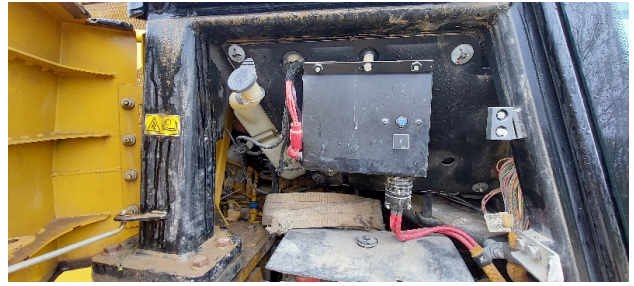
MACHINE CONFIGURATION

● Machine type Standard - GP ● Rops Close ● Bucket Standard 1,8 / 2500 Get Get 1 ● General Truck Residual 40% ● Air Conditioning system ● 14000 Kg ● CE Mark ● CE Certificate ● Use and maintenance manual ● AVAILABLE FROM JUNE

MACHINE PHOTOS









GENERAL APPEARANCE

◆ Painting Conditions	Good
◆ Counterweight conditions	Good
	Needs painting? : No
◆ Frame/Bumper conditions	Good
◆ Door conditions (left)	Very good

Truck

◆ N/D	10
◆ N/D	80
◆ N/D	10

◆	N/D	10
---	-----	----

◆	N/D	80
---	-----	----

◆	N/D	80
---	-----	----

Functionality

Engine & electrical system functionality

◆	N/D	Accesa e funzionante "al lavoro"
---	-----	----------------------------------

◆	N/D		Very good
---	-----	--	-----------

◆	N/D		No
---	-----	--	----

◆	N/D		No
---	-----	--	----

◆	N/D		No
---	-----	--	----

◆	N/D		No
---	-----	--	----

◆	N/D		Good
---	-----	--	------

◆	N/D		Good
---	-----	--	------

◆	N/D		Good
---	-----	--	------

◆	N/D		No
---	-----	--	----

Functionality drive and rotation

◆	N/D		Good
---	-----	--	------

◆	N/D		Good
---	-----	--	------

◆ N/D Good

◆ N/D Good

Linkage Group

◆ N/D No

◆ N/D Good

Presence of welding/cracks : No

◆ N/D Good

◆ N/D Good

◆ N/D Good

◆ N/D Good

◆ N/D Good

◆ N/D No

Cabin and Tools

◆ Conditions internal cabin: Good

◆ Lights & Windshield present issues_ Presents and functioning

◆ Air contidioning & Filters conditions: Presents and functioning

◆ Back & side camera conditions: Not functioning

Check 81/2008

◆ Glasses conditions:	Excellent - no needs repair
◆ Lights conditions:	Excellent - no needs repair
◆ Condizioni specchietti:	Eccellente - non necessita riparazione
◆ Stepladders & handrails conditions:	Poor
◆ Cameras conditions:	Broken or Chipped - needs repair
◆ Flashing conditions:	Not functioning
◆ Safety belt conditions:	Present and expired
◆ Controls been modified:	No
◆ Presence of Exclusion Control Lever:	Yes
◆ Are Tools Functional & Visible with tag:	Yes
◆ Canopy completed and comes with keys and bolt:	Yes
◆ All Pipes with no damage e/o scratches:	Yes
◆ Batteries box shielded:	Yes
◆ Acoustic alarm works properly:	Yes
◆ Boardwalk presence:	Present and functioning

Valutazione Macchina

★ Non Funzionante (NF)

La macchina si presenta non funzionante e/o in pessime condizioni. Macchina da demolire o venduta per parti di ricambio. La macchina NON è in sicurezza.

★★ Scarso (S)

La macchina è in cattivo stato e può presentare visibili rotture e/o crepe su tutta la struttura. Per il suo ottimale funzionamento, o per essere avviata, può necessitare di importanti riparazioni a carro/gomme, perdite d'olio, riverniciatura completa, componenti principali, messa in sicurezza.

★★★ Buono (B)

La macchina si presenta in buone condizioni sia estetiche che di funzionamento. Carro/Gomme hanno orientativamente un 30/40% di vita residua. La macchina non presenta importanti rotture e/o perdite d'olio. La macchina è pronta per lavorare "AS IS" anche se potrebbe richiedere piccoli interventi di riparazione/migliorie. La macchina è in sicurezza.

★★★★ Molto Buono (O)

La macchina si presenta in condizioni molto buone, non ha più di 5 anni e/o 5000 ore lavorate. Non presenta problemi strutturali e può essere preparata esteticamente per renderla "quasi nuova". Componenti principali non inferiori al 50/60% di vita residua, macchina in sicurezza.

★★★★★ Eccellente (E)

La macchina si presenta in condizioni eccellenti, prossime al nuovo. Componenti principali non inferiori al 70/80% di vita residua, macchina in sicurezza.

Machine Rating

★ Not Working (NW)

Machine not operational or in really bad conditions. Machine has to be demolished or sold as a "parts". Machine not in security conditions.

★★ Poor (P)

Machine in bad condition, got visible cracks or repairable structural issues. Machine is operational but, in order to work properly, it may need significant repairs to tyres/truck, paint, pins and/or bushings, power train, hydraulic system.

★★★ Good (G)

Machine is in good condition and operational, with no structural issues. Tyres/Track around 30/40% of residual life. No relevant hydraulic leaks, pins/bushings with normal wear, frame may need to be repainted. Machine is ready to work "AS IS", it may need minor repairs for a better performance. Machine in security conditions or easy to be in safety condition.

★★★★ Very Good (VG)

Machine is in very good conditions, with no more of 5 years and/or 5000 working hours. No structural issues; painting condition is almost perfect. May need an easy check to be sold as "Brand New". Main components with 50/60% of life residue. Machine in security conditions.

★★★★★ Excellent (E)

Machine is in excellent condition, comparable to a new one. Main components-with 70/80% of life residue. Machine in security conditions.