

SALES REPORT: CATERPILLAR 988K - SN TWX00### - Year 2015

This Report is a summary about observations came out from technical inspection done by our specialised technician.

GENERAL CONDITIONS

MACHINE DATA

Model: 988K

Family: LARGE WHEEL LOADER

Serial Number: TWX00###

Order Number MU/MM: MU00819682

Construction year: 2015

Hour meter: 9825

General residual conditions Truck/Tyres: 20 %

Machine main application: Basic application

Machine availability date : 27/03/2026

Location: Coming in

Rating: ★★☆☆☆

MACHINE CONFIGURATION

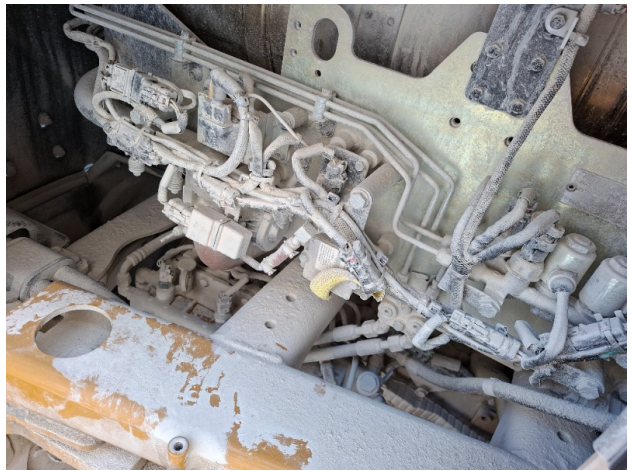
● Machine type Demolition ● Steering type Joystick ● Differential Type Standard ● Transmission type Automatic ● Quick Coupler System ● Quick coupler Hydraulic ● Bucket undefined Get Teeth ● Forks ● Tyres type Rock ● General Tyres Residual 20 35/65R33 bridgestone ● Rops Close ● Air Conditioning system ● Auto Lube system ● Weight Scale ● Product Link ● 65000 Kg ● CE Mark ● CE Certificate ● Use and maintenance manual ● Registration book & Licence plate undefined

MACHINE PHOTOS

◆ Il contaore e':

Funzionante







GENERAL APPEARANCE

- ◆ Painting Conditions: Good

- ◆ Counterweight conditions: Good

- Needs painting? : No

- ◆ Frame/Bumper conditions: Good

- ◆ Door conditions: Good

- ◆ Central joint: Good

- ◆ Fender/Mudguard conditions: Good

Tyres

◆ Front Tyres residual: 20

◆ Front Tyres residual: 20

Functionality

Engine & electrical system functionality

◆ In quale stato è stata visionata la macchina: Accesa e funzionante "al lavoro"

◆ Engine working conditions: Very good

◆ Engine with oil leaks: No

◆ Engine presents blowby: No

◆ Oil-Water presence: No

◆ Engine present smokiness: No

◆ Radiator conditions: Very good

◆ Starter motor conditions: Very good

◆ Batteries/Cables conditions: Very good

◆ Presence of electrical fault: No

Functionality drive and rotation

◆ Hydraulic pump conditions: Very good

◆ Engine travel conditions: NA - Not applicable

◆ Final drives conditions: Very good

◆ Hydraulic joint conditions: Very good

Presence of leaks : No

◆ Gear switches go/back conditions: Very Good

Engine & electrical system functionality

◆ Engine working conditions: Very good

◆ Radiator conditions: Very good

◆ Starter motor conditions: Very good

Linkage Group

◆ Tenuta idraulica braccio (il braccio cala): No

◆ Boom structure: Very good

Presence of welding/cracks : No

◆ Flexible pipes conditions: Good

◆ Lifting cylinders conditions: Good

◆ Bucket cylinder conditions: Good

◆ Pins & Bushings bucket conditions: Good

◆ Bucket & Get conditions: Good

◆ Quick Coupler conditions: Good

◆ Funzionamento Impianto Ingrassaggio Automatico: Sì

Cabin and Tools

| | |
|--|--------------------------|
| ◆ Conditions internal cabin: | Good |
| ◆ Lights & Windshield present issues: | Presents and functioning |
| ◆ Air conditioning & Filters conditions: | Presents and functioning |
| ◆ Back & side camera conditions: | Present and functioning |

Check 81/2008

| | |
|--|--|
| ◆ Condizioni freni: | Buono |
| ◆ Condizioni freno di Stazionamento: | Buono |
| ◆ Glass conditions: | Broken or Chipped - needs repair |
| ◆ Lights conditions: | Excellent - no needs repair |
| ◆ Condizioni specchietti: | Eccellente - non necessita riparazione |
| ◆ Stepladders & handrails conditions: | Poor |
| ◆ Cameras conditions: | Excellent - no needs repair |
| ◆ Flashing conditions: | Present and functioning |
| ◆ Safety belt conditions: | Present and expired |
| ◆ Controls been modified: | No |
| ◆ Presence of Exclusion Control Lever: | Yes |
| ◆ Are Tools Functional & Visible with tag: | Yes |
| ◆ Canopy completed and comes with keys and bolt: | Yes |

◆ All Pipes with no damage e/o scratches: Yes

◆ Batteries box shielded: Yes

◆ Acoustic alarm works properly: Yes

◆ Boardwalk presence: Present and bashee

◆ Annotazioni sul: Sistemazione scalette Sistemazione corrimano Sistemazione protezione ventola

Valutazione Macchina

★ Non Funzionante (NF)

La macchina si presenta non funzionante e/o in pessime condizioni. Macchina da demolire o venduta per parti di ricambio. La macchina NON è in sicurezza.

★★ Scarso (S)

La macchina è in cattivo stato e può presentare visibili rotture e/o crepe su tutta la struttura. Per il suo ottimale funzionamento, o per essere avviata, può necessitare di importanti riparazioni a carro/gomme, perdite d'olio, riverniciatura completa, componenti principali, messa in sicurezza.

★★★ Buono (B)

La macchina si presenta in buone condizioni sia estetiche che di funzionamento. Carro/Gomme hanno orientativamente un 30/40% di vita residua. La macchina non presenta importanti rotture e/o perdite d'olio. La macchina è pronta per lavorare "AS IS" anche se potrebbe richiedere piccoli interventi di riparazione/migliorie. La macchina è in sicurezza.

★★★★ Molto Buono (O)

La macchina si presenta in condizioni molto buone, non ha più di 5 anni e/o 5000 ore lavorate. Non presenta problemi strutturali e può essere preparata esteticamente per renderla "quasi nuova". Componenti principali non inferiori al 50/60% di vita residua, macchina in sicurezza.

★★★★★ Eccellente (E)

La macchina si presenta in condizioni eccellenti, prossime al nuovo. Componenti principali non inferiori al 70/80% di vita residua, macchina in sicurezza.

Machine Rating

★ Not Working (NW)

Machine not operational or in really bad conditions. Machine has to be demolished or sold as a "parts". Machine not in security conditions.

★★ Poor (P)

Machine in bad condition, got visible cracks or repairable structural issues. Machine is operational but, in order to work properly, it may need significant repairs to tyres/truck, paint, pins and/or bushings, power train, hydraulic system.

★★★ Good (G)

Machine is in good condition and operational, with no structural issues. Tyres/Track around 30/40% of residual life. No relevant hydraulic leaks, pins/bushings with normal wear, frame may need to be repainted. Machine is ready to work "AS IS", it may need minor repairs for a better performance. Machine in security conditions or easy to be in safety condition.

★★★★ Very Good (VG)

Machine is in very good conditions, with no more of 5 years and/or 5000 working hours. No structural issues; painting condition is almost perfect. May need an easy check to be sold as "Brand New". Main components with 50/60% of life residue. Machine in security conditions.

★★★★★ Excellent (E)

Machine is in excellent condition, comparable to a new one. Main components-with 70/80% of life residue. Machine in security conditions.