

## SALES REPORT: CATERPILLAR 336 NG - SN WFF00197 - Year 2019

This Report is a summary about observations comes out from technical inspection done by our specialised technician.

### GENERAL CONDITIONS

---

#### MACHINE DATA

---

**Model:** 336 NG

**Family:** MEDIUM EXCAVATOR

**Serial Number:** WFF00197

**Order Number MU/MM:** MU00820129

**Construction year:** 2019

**Hour meter:** 5062

**General residual conditions Truck/Tyres:** 60 %

**Machine main application:** Basic application

**Location:** Stock CASERTA

**Rating:** ★★☆☆☆

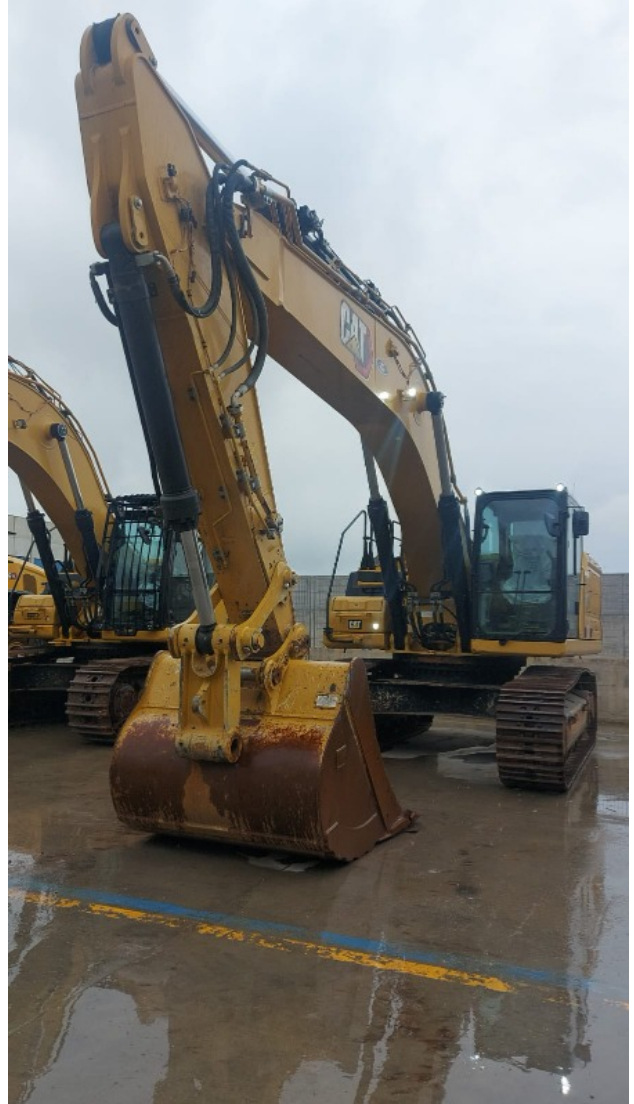
#### MACHINE CONFIGURATION

---

● Machine type Standard ● Boom type Mono boom ● Boom check valves ● Stick check valves ● Plant features Versatility ● Quick coupler Hydraulic ● Bucket Standard ● Truck type Fixed ● General Truck Residual 60% ● Cabin type Fixed standard ● Cabin fog Front superiore ● Air Conditioning system ● Product Link ● 30000 Kg ● CE Mark ● CE Certificate ● Use and maintenance manual

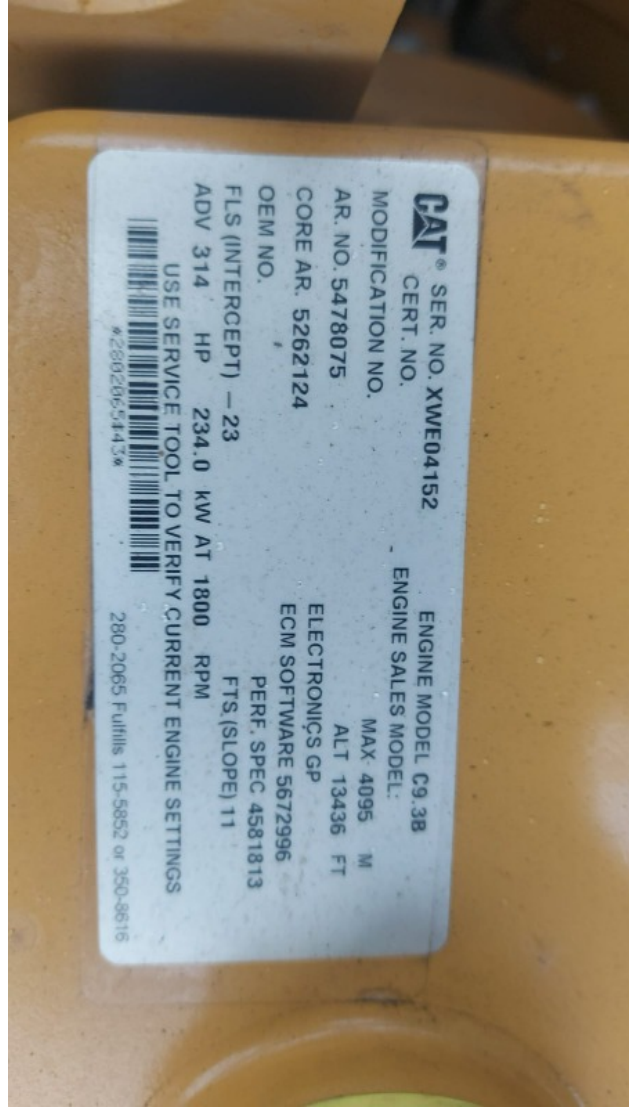
**MACHINE PHOTOS**

---











## GENERAL APPEARANCE

---

◆ Painting Conditions	Good
<hr/>	
◆ Counterweight conditions:	Good
<hr/>	
◆ Frame/Bumper conditions:	Good

## TRUCK

---

◆ Sprockets residual:	60
<hr/>	
◆ Front idler wheel residual:	60

◆ Rollers upper/bottom residual: 60

---

◆ Chains residual: 60

---

### Right side

---

◆ Door conditions (right): Good

---

◆ Spar conditions: Good

---

### Left side

---

◆ Door conditions (left): Good

---

◆ Door conditions (left): Good

---

◆ Spar conditions (left): Good

---

◆ Hood/Armor bottom conditions: Present and intact

---

### Functionality

---

#### Engine & electrical system functionality

---

◆ In quale stato è stata visionata la macchina: Accesa e funzionante "al lavoro"

---

◆ Engine working conditions: Good

---

◆ Engine with oil leaks: No

---

◆ Engine presents blowby: No

---

◆ Oil-Water presence: No

---

◆ Engine present smokiness: No

---

◆ Radiator conditions:	Good
◆ Starter motor conditions:	Good
◆ Batteries/Cables conditions:	Good
◆ Presence of electrical fault:	No

---

### Functionality drive and rotation

---

◆ Hydraulic pump conditions:	Good
◆ Engine rotation conditions:	Good
◆ Engine travel conditions:	Good
◆ Final drives conditions:	Good
◆ Hydraulic joint conditions:	Good
	Presence of leaks : No
◆ Hydraulic joint conditions:	Good
	Presence of leaks : No

---

### Linkage Group

---

◆ Hydraulic conditions linkage group:	No
◆ Boom structure:	Good
	Presence of welding/cracks : No
◆ Stick structure:	Good
	Presence of welding/cracks : No
◆ Flexible pipes conditions:	Good
◆ Boom cylinders conditions:	Good

Leaks : No

◆ Stick cylinder conditions: Good

Leaks : No

◆ Bucket cylinder conditions: Good

Leaks : No

◆ Pins & Bushings boom conditions: Good

◆ Pins & Bushings stick conditions: Good

◆ Pins & Bushings bucket conditions: Good

◆ Bucket & Get conditions: Good

◆ Quick Coupler conditions: Good

◆ Auto Lube working conditions: No

**Cabin and Tools**

◆ Conditions internal cabin: Good

◆ Flashing presents issues: No

◆ Lights & Windshield present issues: Presents and functioning

◆ Air conditioning is working: Presente e funzionante

◆ Back & side camera conditions: Present and functioning

**Check 81/2008**

◆ Glass conditions: Excellent - no needs repair

◆ Lights conditions: Excellent - no needs repair

---

◆ Rear view mirrors conditions:	Excellent - no needs repair
---------------------------------	-----------------------------

---

◆ Stepladders & handrails conditions:	Good
---------------------------------------	------

---

◆ Cameras conditions:	Excellent - no needs repair
-----------------------	-----------------------------

---

◆ Flashing conditions:	Present and functioning
------------------------	-------------------------

---

◆ Safety belt conditions:	Present and valid
---------------------------	-------------------

---

◆ Controls been modified:	No
---------------------------	----

---

◆ Presence of Exclusion Control Lever:	No
--	----

If No, are control levers protected to accidental functionality? : Yes

---

◆ Are Tools Functional & Visible with tag:	No
--	----

---

◆ Canopy completed and comes with keys and bolt:	Yes
--	-----

---

◆ All Pipes with no damage e/o scratches:	Yes
---	-----

---

◆ Batteries box shielded:	Yes
---------------------------	-----

---

◆ Acoustic alarm works properly:	Yes
----------------------------------	-----

---

◆ Boardwalk presence:	Present and functioning
-----------------------	-------------------------

---

## Valutazione Macchina

### ★ Non Funzionante (NF)

La macchina si presenta non funzionante e/o in pessime condizioni. Macchina da demolire o venduta per parti di ricambio. La macchina NON è in sicurezza.

### ★★ Scarso (S)

La macchina è in cattivo stato e può presentare visibili rotture e/o crepe su tutta la struttura. Per il suo ottimale funzionamento, o per essere avviata, può necessitare di importanti riparazioni a carro/gomme, perdite d'olio, riverniciatura completa, componenti principali, messa in sicurezza.

### ★★★ Buono (B)

La macchina si presenta in buone condizioni sia estetiche che di funzionamento. Carro/Gomme hanno orientativamente un 30/40% di vita residua. La macchina non presenta importanti rotture e/o perdite d'olio. La macchina è pronta per lavorare "AS IS" anche se potrebbe richiedere piccoli interventi di riparazione/migliorie. La macchina è in sicurezza.

### ★★★★ Molto Buono (O)

La macchina si presenta in condizioni molto buone, non ha più di 5 anni e/o 5000 ore lavorate. Non presenta problemi strutturali e può essere preparata esteticamente per renderla "quasi nuova". Componenti principali non inferiori al 50/60% di vita residua, macchina in sicurezza.

### ★★★★★ Eccellente (E)

La macchina si presenta in condizioni eccellenti, prossime al nuovo. Componenti principali non inferiori al 70/80% di vita residua, macchina in sicurezza.

## Machine Rating

### ★ Not Working (NW)

Machine not operational or in really bad conditions. Machine has to be demolished or sold as a "parts". Machine not in security conditions.

### ★★ Poor (P)

Machine in bad condition, got visible cracks or repairable structural issues. Machine is operational but, in order to work properly, it may need significant repairs to tyres/truck, paint, pins and/or bushings, power train, hydraulic system.

### ★★★ Good (G)

Machine is in good condition and operational, with no structural issues. Tyres/Track around 30/40% of residual life. No relevant hydraulic leaks, pins/bushings with normal wear, frame may need to be repainted. Machine is ready to work "AS IS", it may need minor repairs for a better performance. Machine in security conditions or easy to be in safety condition.

### ★★★★ Very Good (VG)

Machine is in very good conditions, with no more of 5 years and/or 5000 working hours. No structural issues; painting condition is almost perfect. May need an easy check to be sold as "Brand New". Main components with 50/60% of life residue. Machine in security conditions.

### ★★★★★ Excellent (E)

Machine is in excellent condition, comparable to a new one. Main components-with 70/80% of life residue. Machine in security conditions.