

SALES REPORT: HITACHI ZX490-6 - SN MCMJAG5ZT00060### - Year 2019

This Report is a summary about observations comes out from technical inspection done by our specialised technician.

GENERAL CONDITIONS

MACHINE DATA

Model: ZX490-6

Family: MEDIUM EXCAVATOR

Serial Number: MCMJAG5ZT00060###

Order Number MU/MM: MU00820171

Construction year: 2019

Hour meter: 3484

General residual conditions Truck/Tyres: 79 %

Machine main application: Basic application

Machine availability date : 10/04/2026

Location: Coming in

Rating: ★★☆☆☆

MACHINE CONFIGURATION

● Machine type Standard ● Boom type Mono boom ● Boom check valves ● Stick check valves ● Plant features Versatility ● Bucket Standard Get Teeth ● Truck type Fixed ● General Truck Residual 79% ● Cabin type Fixed standard ● Cabin fog Front superiore ● Air Conditioning system ● 49500 Kg ● CE Mark ● CE Certificate ● Use and maintenance manual

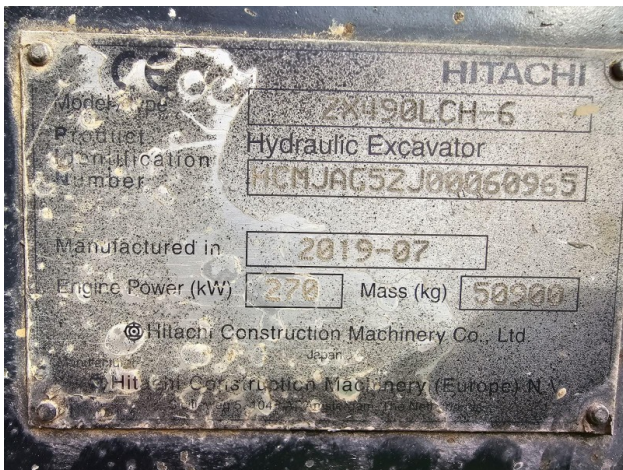
MACHINE PHOTOS

◆ Il contaore è:

Funzionante









GENERAL APPEARANCE

◆ Painting Conditions	Very Good
<hr/>	
◆ Counterweight conditions:	Very good
<hr/>	
◆ Frame/Bumper conditions:	Very Good
<hr/>	

TRUCK

◆ Sprockets residual:	79
<hr/>	
◆ Front idler wheel residual:	80
<hr/>	
◆ Rollers upper/bottom residual:	80
<hr/>	

◆ Chains residual:

79

Right side

◆ Door conditions (right):

Very good

◆ Spar conditions:

Very good

Left side

◆ Door conditions (left):

Very good

◆ Door conditions (left):

Very good

◆ Spar conditions (left):

Very good

◆ Hood/Armor bottom conditions:

Present and intact

Functionality

Engine & electrical system functionality

◆ In quale stato è stata visionata la macchina:

Accesa e funzionante "al lavoro"

◆ Engine working conditions:

Very good

◆ Engine with oil leaks:

No

◆ Engine presents blowby:

No

◆ Oil-Water presence:

No

◆ Engine present smokiness:

No

◆ Radiator conditions:

Very good

-
- ◆ Starter motor conditions: Very good

 - ◆ Batteries/Cables conditions: Very good

 - ◆ Presence of electrical fault: No

Functionality drive and rotation

- ◆ Hydraulic pump conditions: Very good

- ◆ Engine rotation conditions: Very good

- ◆ Engine travel conditions: Very good

- ◆ Final drives conditions: Very good

- ◆ Hydraulic joint conditions: Very good
Presence of leaks : No

- ◆ Hydraulic joint conditions: Very good
Presence of leaks : No

Linkage Group

- ◆ Hydraulic conditions linkage group: No

- ◆ Boom structure: Very good
Presence of welding/cracks : No

- ◆ Stick structure: Very good
Presence of welding/cracks : No

- ◆ Flexible pipes conditions: Very good

- ◆ Boom cylinders conditions: Very good
Leaks : No

- ◆ Stick cylinder conditions: Very good

- Leaks : No

- ◆ Bucket cylinder conditions: Very good

- Leaks : No

- ◆ Pins & Bushings boom conditions: Very good

- ◆ Pins & Bushings stick conditions: Very good

- ◆ Pins & Bushings bucket conditions: Very good

- ◆ Bucket & Get conditions: Good

- ◆ Quick Coupler conditions: NA - Not applicable

- ◆ Auto Lube working conditions: No

Cabin and Tools

- ◆ Conditions internal cabin: Very good

- ◆ Flashing presents issues: Yes

- ◆ Lights & Windshield present issues: Presents and functioning

- ◆ Air conditioning is working: Presente e funzionante

- ◆ Back & side camera conditions: Present and functioning

Check 81/2008

- ◆ Glass conditions: Excellent - no needs repair

- ◆ Lights conditions: Excellent - no needs repair

- ◆ Rear view mirrors conditions: Excellent - no needs repair

◆ Stepladders & handrails conditions:	Very good
◆ Cameras conditions:	Excellent - no needs repair
◆ Flashing conditions:	Present and functioning
◆ Safety belt conditions:	Present and expired
◆ Controls been modified:	No
◆ Presence of Exclusion Control Lever:	Yes
	If No, are control levers protected to accidental functionality? : Yes
◆ Are Tools Functional & Visible with tag:	Yes
◆ Canopy completed and comes with keys and bolt:	Yes
◆ All Pipes with no damage e/o scratches:	Yes
◆ Batteries box shielded:	Yes
◆ Acoustic alarm works properly:	Yes
◆ Boardwalk presence:	Present and functioning

Valutazione Macchina

★ Non Funzionante (NF)

La macchina si presenta non funzionante e/o in pessime condizioni. Macchina da demolire o venduta per parti di ricambio. La macchina NON è in sicurezza.

★★ Scarso (S)

La macchina è in cattivo stato e può presentare visibili rotture e/o crepe su tutta la struttura. Per il suo ottimale funzionamento, o per essere avviata, può necessitare di importanti riparazioni a carro/gomme, perdite d'olio, riverniciatura completa, componenti principali, messa in sicurezza.

★★★ Buono (B)

La macchina si presenta in buone condizioni sia estetiche che di funzionamento. Carro/Gomme hanno orientativamente un 30/40% di vita residua. La macchina non presenta importanti rotture e/o perdite d'olio. La macchina è pronta per lavorare "AS IS" anche se potrebbe richiedere piccoli interventi di riparazione/migliorie. La macchina è in sicurezza.

★★★★ Molto Buono (O)

La macchina si presenta in condizioni molto buone, non ha più di 5 anni e/o 5000 ore lavorate. Non presenta problemi strutturali e può essere preparata esteticamente per renderla "quasi nuova". Componenti principali non inferiori al 50/60% di vita residua, macchina in sicurezza.

★★★★★ Eccellente (E)

La macchina si presenta in condizioni eccellenti, prossime al nuovo. Componenti principali non inferiori al 70/80% di vita residua, macchina in sicurezza.

Machine Rating

★ Not Working (NW)

Machine not operational or in really bad conditions. Machine has to be demolished or sold as a "parts". Machine not in security conditions.

★★ Poor (P)

Machine in bad condition, got visible cracks or repairable structural issues. Machine is operational but, in order to work properly, it may need significant repairs to tyres/truck, paint, pins and/or bushings, power train, hydraulic system.

★★★ Good (G)

Machine is in good condition and operational, with no structural issues. Tyres/Track around 30/40% of residual life. No relevant hydraulic leaks, pins/bushings with normal wear, frame may need to be repainted. Machine is ready to work "AS IS", it may need minor repairs for a better performance. Machine in security conditions or easy to be in safety condition.

★★★★ Very Good (VG)

Machine is in very good conditions, with no more of 5 years and/or 5000 working hours. No structural issues; painting condition is almost perfect. May need an easy check to be sold as "Brand New". Main components with 50/60% of life residue. Machine in security conditions.

★★★★★ Excellent (E)

Machine is in excellent condition, comparable to a new one. Main components-with 70/80% of life residue. Machine in security conditions.