

SALES REPORT: CATERPILLAR 950M - SN J1S00### - Year 2018

This Report is a summary about observations came out from technical inspection done by our specialised technician.

GENERAL CONDITIONS

MACHINE DATA

Model: 950M

Family: MEDIUM WHEEL LOADER

Serial Number: J1S00###

Order Number MU/MM: MU00820718

Construction year: 2018

Hour meter: 8199

General residual conditions Truck/Tyres: 50 %

Machine main application: Basic application

Machine availability date : 27/04/2026

Location: Coming in

Rating: ★★☆☆☆

Public price: 115.000 €

MACHINE CONFIGURATION

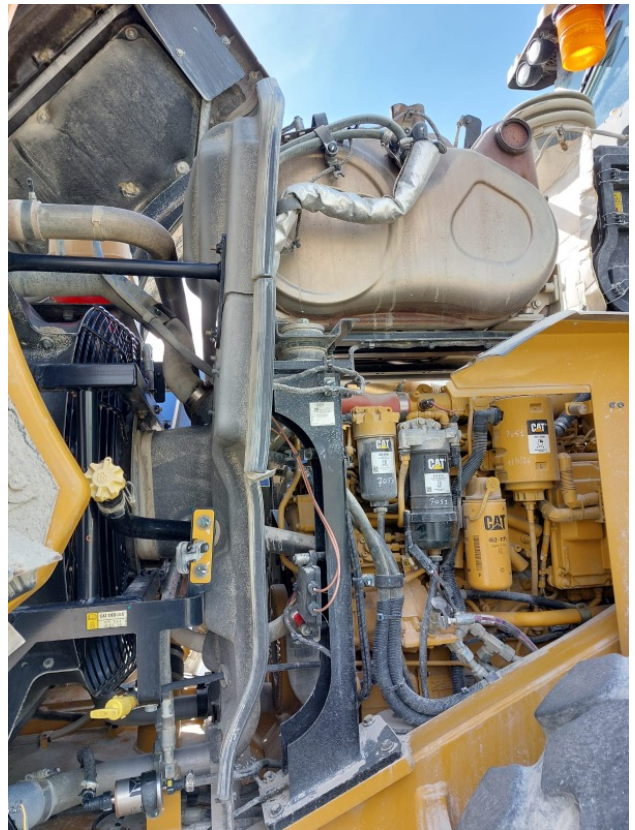
● Machine type Standard - GP ● Steering type Command steering ● Differential Type Controlled Slippage ● Transmission type Automatic ● Bucket Standard 3,3 mc Get Cover Blade ● Tyres type Standard ● General Tyres Residual 50 25,5R25 michelin XHA ● Rops Close ● Air Conditioning system ● Weight Scale ● Product Link ● 20000 Kg ● CE Mark ● CE Certificate ● EPA Tag ● Use and maintenance manual ● Registration book & Licence plate undefined

MACHINE PHOTOS

◆ Il contaore e':

Funzionante









◆ Painting Conditions: Good

◆ Counterweight conditions: Good

Needs painting? : No

◆ Frame/Bumper conditions: Good

◆ Door conditions: Good

◆ Central joint: Good

◆ Fender/Mudguard conditions: Good

Tyres

◆ Front Tyres residual: 50

◆ Front Tyres residual: 50

Functionality

Engine & electrical system functionality

◆ In quale stato è stata visionata la macchina: Accesa e provata per ispezione

◆ Engine working conditions: Good

◆ Engine with oil leaks: No

◆ Engine presents blowby: No

◆ Oil-Water presence: No

◆ Engine present smokiness: No

◆ Radiator conditions: Good

- ◆ Starter motor conditions: Good

- ◆ Batteries/Cables conditions: Good

- ◆ Presence of electrical fault: No

- ◆ Annotazioni su:
Macchina seguita da CdS CGT - sostituito scambiatore e alcuni iniettori circa 1000 ore fa - ottima manutenzione

Functionality drive and rotation

- ◆ Hydraulic pump conditions: Good

- ◆ Engine travel conditions: Good

- ◆ Final drives conditions: Good

- ◆ Hydraulic joint conditions: Good
Presence of leaks : No

- ◆ Gear switches go/back conditions: Good

- ◆ Annotazioni su SOSTITUITA TRASMISSIONE (REMAN - € 36.000) a 7300 ore (800 ore fa)

Engine & electrical system functionality

- ◆ Engine working conditions: Good

- ◆ Radiator conditions: Good

- ◆ Starter motor conditions: Good

Linkage Group

- ◆ Tenuta idraulica braccio (il braccio cala): No

- ◆ Boom structure: Good

Presence of welding/cracks : No

◆ Flexible pipes conditions:	Good
◆ Lifting cylinders conditions:	Good
◆ Bucket cylinder conditions:	Good
◆ Pins & Bushings bucket conditions:	Good
◆ Bucket & Get conditions:	Good
◆ Quick Coupler conditions:	Good
◆ Funzionamento Impianto Ingrassaggio Automatico:	No

Cabin and Tools

◆ Conditions internal cabin:	Good
◆ Lights & Windshield present issues:	Presents and functioning
◆ Air conditioning & Filters conditions:	Presents and functioning
◆ Back & side camera conditions:	Present and functioning

Check 81/2008

◆ Condizioni freni:	Buono
◆ Condizioni freno di Stazionamento:	Buono
◆ Glass conditions:	Excellent - no needs repair
◆ Lights conditions:	Excellent - no needs repair

◆ Condizioni specchiati:	Eccellente - non necessita riparazione
◆ Stepladders & handrails conditions:	Very good
◆ Cameras conditions:	Excellent - no needs repair
◆ Flashing conditions:	Present and functioning
◆ Safety belt conditions:	Present and valid
◆ Controls been modified:	No
◆ Presence of Exclusion Control Lever:	Yes
◆ Are Tools Functional & Visible with tag:	Yes
◆ Canopy completed and comes with keys and bolt:	Yes
◆ All Pipes with no damage e/o scratches:	Yes
◆ Batteries box shielded:	Yes
◆ Acoustic alarm works properly:	Yes
◆ Boardwalk presence:	Present and functioning

Valutazione Macchina

★ Non Funzionante (NF)

La macchina si presenta non funzionante e/o in pessime condizioni. Macchina da demolire o venduta per parti di ricambio. La macchina NON è in sicurezza.

★★ Scarso (S)

La macchina è in cattivo stato e può presentare visibili rotture e/o crepe su tutta la struttura. Per il suo ottimale funzionamento, o per essere avviata, può necessitare di importanti riparazioni a carro/gomme, perdite d'olio, riverniciatura completa, componenti principali, messa in sicurezza.

★★★ Buono (B)

La macchina si presenta in buone condizioni sia estetiche che di funzionamento. Carro/Gomme hanno orientativamente un 30/40% di vita residua. La macchina non presenta importanti rotture e/o perdite d'olio. La macchina è pronta per lavorare "AS IS" anche se potrebbe richiedere piccoli interventi di riparazione/migliorie. La macchina è in sicurezza.

★★★★ Molto Buono (O)

La macchina si presenta in condizioni molto buone, non ha più di 5 anni e/o 5000 ore lavorate. Non presenta problemi strutturali e può essere preparata esteticamente per renderla "quasi nuova". Componenti principali non inferiori al 50/60% di vita residua, macchina in sicurezza.

★★★★★ Eccellente (E)

La macchina si presenta in condizioni eccellenti, prossime al nuovo. Componenti principali non inferiori al 70/80% di vita residua, macchina in sicurezza.

Machine Rating

★ Not Working (NW)

Machine not operational or in really bad conditions. Machine has to be demolished or sold as a "parts". Machine not in security conditions.

★★ Poor (P)

Machine in bad condition, got visible cracks or repairable structural issues. Machine is operational but, in order to work properly, it may need significant repairs to tyres/truck, paint, pins and/or bushings, power train, hydraulic system.

★★★ Good (G)

Machine is in good condition and operational, with no structural issues. Tyres/Track around 30/40% of residual life. No relevant hydraulic leaks, pins/bushings with normal wear, frame may need to be repainted. Machine is ready to work "AS IS", it may need minor repairs for a better performance. Machine in security conditions or easy to be in safety condition.

★★★★ Very Good (VG)

Machine is in very good conditions, with no more of 5 years and/or 5000 working hours. No structural issues; painting condition is almost perfect. May need an easy check to be sold as "Brand New". Main components with 50/60% of life residue. Machine in security conditions.

★★★★★ Excellent (E)

Machine is in excellent condition, comparable to a new one. Main components-with 70/80% of life residue. Machine in security conditions.