

SALES REPORT: CATERPILLAR 325 NG - SN TEL10### - Year 2021

This Report is a summary about observations came out from technical inspection done by our specialised technician.

GENERAL CONDITIONS

MACHINE DATA

Model: 325 NG

Family: MEDIUM EXCAVATOR

Serial Number: TEL10###

Order Number MU/MM: MU00821716

Construction year: 2021

Hour meter: 8202

General residual conditions Truck/Tyres: 70 %

Machine main application: Basic application

Machine availability date : 15/04/2026

Location: Coming in

Rating: ★★☆☆☆

Public price: Ask

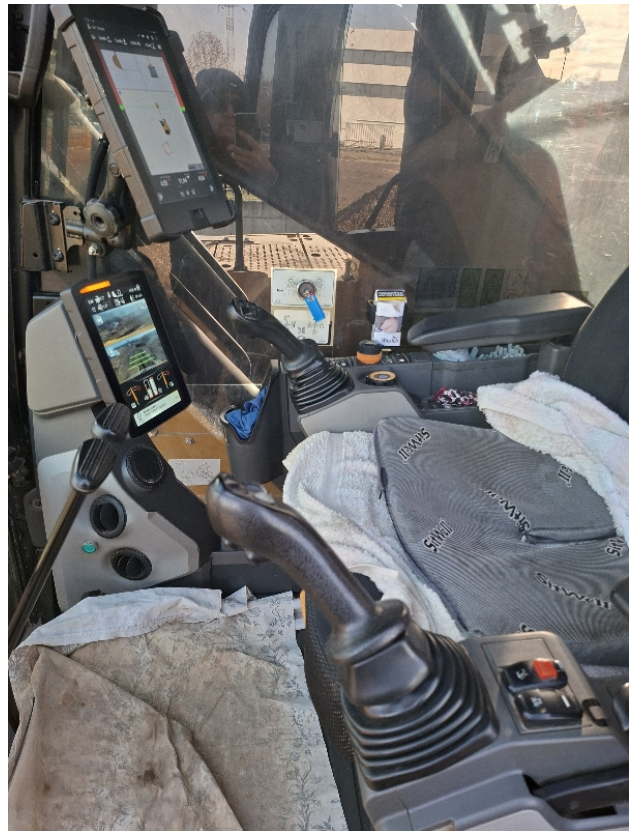
MACHINE CONFIGURATION

● Machine type Standard ● Boom type Triple boom ● Boom check valves ● Stick check valves ● Plant features Versatility linea drenaggio impianto dedicato all'attacco rapido ● Quick coupler Hydraulic Caterpillar universale ● Bucket Standard 1500mm Get Teeth Get Cover Blade ● Truck type Fixed ● General Truck Residual 70% ● Cabin type Fixed standard ● Cabin fog Front superiore ● Air Conditioning system ● Auto Lube system ● Product Link ● 25000 Kg ● CE Mark ● CE Certificate ● Use and maintenance manual Macchina molto bella completa di Sistema 3DGPS con ricevitori fissi. Completa di compressore aria 24v ● AVAILABLE FROM APRIL

MACHINE PHOTOS









GENERAL APPEARANCE

◆ Painting Conditions	Very Good
<hr/>	
◆ Counterweight conditions:	Very good
<hr/>	
◆ Frame/Bumper conditions:	Very Good
<hr/>	

TRUCK

◆ Sprockets residual:	70
<hr/>	
◆ Front idler wheel residual:	70
<hr/>	
◆ Rollers upper/bottom residual:	70
<hr/>	
◆ Chains residual:	70
<hr/>	

Right side

- ◆ Door conditions (right): Very good
 - ◆ Spar conditions: Very good
-

Left side

- ◆ Door conditions (left): Very good
 - ◆ Door conditions (left): Very good
 - ◆ Spar conditions (left): Very good
 - ◆ Hood/Armor bottom conditions: Present and intact
-

Functionality

Engine & electrical system functionality

- ◆ In quale stato è stata visionata la macchina: Accesa e funzionante "al lavoro"
- ◆ Engine working conditions: Very good
- ◆ Engine with oil leaks: No
- ◆ Engine presents blowby: No
- ◆ Oil-Water presence: No
- ◆ Engine present smokiness: No
- ◆ Radiator conditions: Very good
- ◆ Starter motor conditions: Good

◆ Batteries/Cables conditions: Good

◆ Presence of electrical fault: No

Functionality drive and rotation

◆ Hydraulic pump conditions: Very good

◆ Engine rotation conditions: Very good

◆ Engine travel conditions: Very good

◆ Final drives conditions: Very good

◆ Hydraulic joint conditions: Very good

Presence of leaks : No

◆ Hydraulic joint conditions: Very good

Presence of leaks : No

Linkage Group

◆ Hydraulic conditions linkage group: No

◆ Boom structure: Very good

Presence of welding/cracks : No

◆ Stick structure: Very good

Presence of welding/cracks : No

◆ Flexible pipes conditions: Very good

◆ Boom cylinders conditions: Very good

Leaks : No

◆ Stick cylinder conditions: Very good

Leaks : No

◆ Bucket cylinder conditions:	Very good
	Leaks : No
◆ Pins & Bushings boom conditions:	Very good
◆ Pins & Bushings stick conditions:	Good
◆ Pins & Bushings bucket conditions:	Good
◆ Bucket & Get conditions:	Good
◆ Quick Coupler conditions:	Very good
◆ Auto Lube working conditions:	SI

Cabin and Tools

◆ Conditions internal cabin:	Very good
◆ Flashing presents issues:	Yes
◆ Lights & Windshield present issues:	Presents and functioning
◆ Air conditioning is working:	Presente e funzionante
◆ Back & side camera conditions:	Present and functioning

Check 81/2008

◆ Glass conditions:	Excellent - no needs repair
◆ Lights conditions:	Excellent - no needs repair
◆ Rear view mirrors conditions:	Excellent - no needs repair
◆ Stepladders & handrails conditions:	Excellent

◆ Cameras conditions:	Excellent - no needs repair
◆ Flashing conditions:	Present and functioning
◆ Safety belt conditions:	Present and valid
◆ Controls been modified:	No
◆ Presence of Exclusion Control Lever:	Yes
◆ Are Tools Functional & Visible with tag:	Yes
◆ Canopy completed and comes with keys and bolt:	Yes
◆ All Pipes with no damage e/o scratches:	Yes
◆ Batteries box shielded:	Yes
◆ Acoustic alarm works properly:	Yes
◆ Boardwalk presence:	Not present

Valutazione Macchina

★ Non Funzionante (NF)

La macchina si presenta non funzionante e/o in pessime condizioni. Macchina da demolire o venduta per parti di ricambio. La macchina NON è in sicurezza.

★★ Scarso (S)

La macchina è in cattivo stato e può presentare visibili rotture e/o crepe su tutta la struttura. Per il suo ottimale funzionamento, o per essere avviata, può necessitare di importanti riparazioni a carro/gomme, perdite d'olio, riverniciatura completa, componenti principali, messa in sicurezza.

★★★ Buono (B)

La macchina si presenta in buone condizioni sia estetiche che di funzionamento. Carro/Gomme hanno orientativamente un 30/40% di vita residua. La macchina non presenta importanti rotture e/o perdite d'olio. La macchina è pronta per lavorare "AS IS" anche se potrebbe richiedere piccoli interventi di riparazione/migliorie. La macchina è in sicurezza.

★★★★ Molto Buono (O)

La macchina si presenta in condizioni molto buone, non ha più di 5 anni e/o 5000 ore lavorate. Non presenta problemi strutturali e può essere preparata esteticamente per renderla "quasi nuova". Componenti principali non inferiori al 50/60% di vita residua, macchina in sicurezza.

★★★★★ Eccellente (E)

La macchina si presenta in condizioni eccellenti, prossime al nuovo. Componenti principali non inferiori al 70/80% di vita residua, macchina in sicurezza.

Machine Rating

★ Not Working (NW)

Machine not operational or in really bad conditions. Machine has to be demolished or sold as a "parts". Machine not in security conditions.

★★ Poor (P)

Machine in bad condition, got visible cracks or repairable structural issues. Machine is operational but, in order to work properly, it may need significant repairs to tyres/truck, paint, pins and/or bushings, power train, hydraulic system.

★★★ Good (G)

Machine is in good condition and operational, with no structural issues. Tyres/Track around 30/40% of residual life. No relevant hydraulic leaks, pins/bushings with normal wear, frame may need to be repainted. Machine is ready to work "AS IS", it may need minor repairs for a better performance. Machine in security conditions or easy to be in safety condition.

★★★★ Very Good (VG)

Machine is in very good conditions, with no more of 5 years and/or 5000 working hours. No structural issues; painting condition is almost perfect. May need an easy check to be sold as "Brand New". Main components with 50/60% of life residue. Machine in security conditions.

★★★★★ Excellent (E)

Machine is in excellent condition, comparable to a new one. Main components-with 70/80% of life residue. Machine in security conditions.