

SALES REPORT: CATERPILLAR CS68B - SN 48800### - Year 2020

This Report is a summary about observations came out from technical inspection done by our specialised technician.

GENERAL CONDITIONS

MACHINE DATA

Model: CS68B

Family: COMPACTOR

Serial Number: 48800###

Order Number MU/MM: MU00821728

Construction year: 2020

Hour meter: 1699

General residual conditions Truck/Tyres: %

Machine main application:

Machine availability date : 27/04/2026

Location: Coming in

Rating: ★★☆☆☆

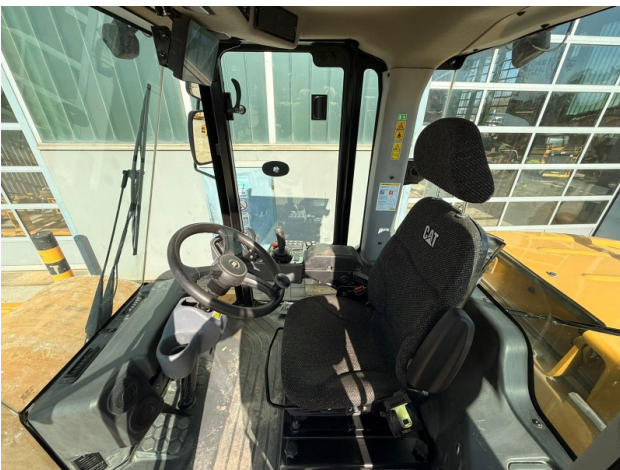
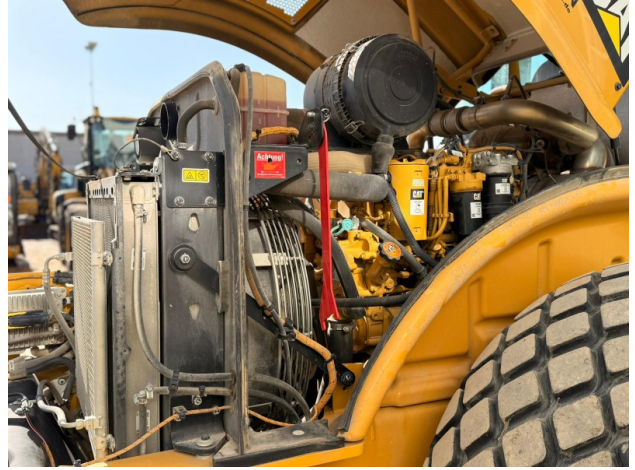
Public price: Ask

MACHINE CONFIGURATION

- Machine type Standard - GP
- Quick Coupler System cabina rops
- Steering type 14325
- Tyres type Standard
- General Tyres Residual 70
- Air Conditioning system
- Product Link
- 14325 Kg
- CE Mark
- CE Certificate
- Use and maintenance manual
- Registration book & Licence plate undefined

MACHINE PHOTOS









GENERAL APPEARANCE

◆ Painting Conditions:	Very Good
◆ Counterweight conditions:	Very good
◆ Frame/Bumper conditions:	Very Good
◆ Door conditions:	Very good
◆ Central joint:	Very good
◆ Fender/Mudguard conditions:	NA - Non Applicabile

Functionality

Engine & electrical system functionality

◆ In quale stato è stata visionata la macchina:	Accesa e provata per ispezione
◆ Engine working conditions:	Good
◆ Engine with oil leaks:	No
◆ Engine presents blowby:	No

◆ Engine present smokiness: No

◆ Radiator conditions: Good

◆ Batteries/Cables conditions: Excellent

◆ Presence of electrical fault: No

Functionality drive and rotation

◆ Hydraulic pump conditions: Good

◆ Engine travel conditions: Good

◆ Final drives conditions: Good

◆ Gear switches go/back conditions: Good

Linkage Group

◆ Hydraulic conditions linkage group: Buono

◆ Flexible pipes conditions: Good

◆ Funzionamento Impianto Ingrassaggio Automatico: No

Cabin and Tools

◆ Conditions internal cabin: Good

◆ Lights & Windshield present issues: Present and not functioning

◆ Air conditioning & Filters conditions: Presents and functioning

◆ Back & side camera conditions: Present and functioning

Check 81/2008

◆ Condizioni freni: Buono

◆ Condizioni freno di Stazionamento: Buono

◆ Glass conditions: Excellent - no needs repair

◆ Lights conditions: Excellent - no needs repair

◆ Condizioni specchietti: Eccellente - non necessita riparazione

◆ Stepladders & handrails conditions: Very good

◆ Cameras conditions: Excellent - no needs repair

◆ Flashing conditions: Not functioning

◆ Safety belt conditions: Present and valid

◆ Controls been modified: No

◆ Presence of Exclusion Control Lever: Yes

If No, are control levers protected to accidental functionality? : No

◆ Are Tools Functional & Visible with tag: Yes

◆ Canopy completed and comes with keys and bolt: Yes

◆ All Pipes with no damage e/o scratches: Yes

◆ Batteries box shielded: Yes

◆ Acoustic alarm works properly: Yes

◆ Boardwalk presence: Present and functioning

Valutazione Macchina

★ Non Funzionante (NF)

La macchina si presenta non funzionante e/o in pessime condizioni. Macchina da demolire o venduta per parti di ricambio. La macchina NON è in sicurezza.

★★ Scarso (S)

La macchina è in cattivo stato e può presentare visibili rotture e/o crepe su tutta la struttura. Per il suo ottimale funzionamento, o per essere avviata, può necessitare di importanti riparazioni a carro/gomme, perdite d'olio, riverniciatura completa, componenti principali, messa in sicurezza.

★★★ Buono (B)

La macchina si presenta in buone condizioni sia estetiche che di funzionamento. Carro/Gomme hanno orientativamente un 30/40% di vita residua. La macchina non presenta importanti rotture e/o perdite d'olio. La macchina è pronta per lavorare "AS IS" anche se potrebbe richiedere piccoli interventi di riparazione/migliorie. La macchina è in sicurezza.

★★★★ Molto Buono (O)

La macchina si presenta in condizioni molto buone, non ha più di 5 anni e/o 5000 ore lavorate. Non presenta problemi strutturali e può essere preparata esteticamente per renderla "quasi nuova". Componenti principali non inferiori al 50/60% di vita residua, macchina in sicurezza.

★★★★★ Eccellente (E)

La macchina si presenta in condizioni eccellenti, prossime al nuovo. Componenti principali non inferiori al 70/80% di vita residua, macchina in sicurezza.

Machine Rating

★ Not Working (NW)

Machine not operational or in really bad conditions. Machine has to be demolished or sold as a "parts". Machine not in security conditions.

★★ Poor (P)

Machine in bad condition, got visible cracks or repairable structural issues. Machine is operational but, in order to work properly, it may need significant repairs to tyres/truck, paint, pins and/or bushings, power train, hydraulic system.

★★★ Good (G)

Machine is in good condition and operational, with no structural issues. Tyres/Track around 30/40% of residual life. No relevant hydraulic leaks, pins/bushings with normal wear, frame may need to be repainted. Machine is ready to work "AS IS", it may need minor repairs for a better performance. Machine in security conditions or easy to be in safety condition.

★★★★ Very Good (VG)

Machine is in very good conditions, with no more of 5 years and/or 5000 working hours. No structural issues; painting condition is almost perfect. May need an easy check to be sold as "Brand New". Main components with 50/60% of life residue. Machine in security conditions.

★★★★★ Excellent (E)

Machine is in excellent condition, comparable to a new one. Main components-with 70/80% of life residue. Machine in security conditions.