

## SALES REPORT: CATERPILLAR 289D - SN TAW00### - Year 2013

This Report is a summary about observations came out from technical inspection done by our specialised technician.

### GENERAL CONDITIONS

---

### MACHINE DATA

---

**Model:** 289D

**Family:** COMPACT TRACK LOADER

**Serial Number:** TAW00###

**Order Number MU/MM:** MU00821913

**Construction year:** 2013

**Hour meter:** 6246

**General residual conditions Truck/Tyres:** 10 %

**Machine main application:** Basic application

**Machine availability date :** 10/04/2026

**Location:** Coming in

**Rating:** ★★☆☆☆

**Public price:** Ask

### MACHINE CONFIGURATION

---

- Machine type Wasting configuration
- Rops Close
- Bucket Standard No fresa
- General Truck Residual 10%
- Air Conditioning system
- Product Link
- 5000 Kg
- CE Mark
- CE Certificate
- EPA Tag
- Use and maintenance manual
- undefined

**MACHINE PHOTOS**

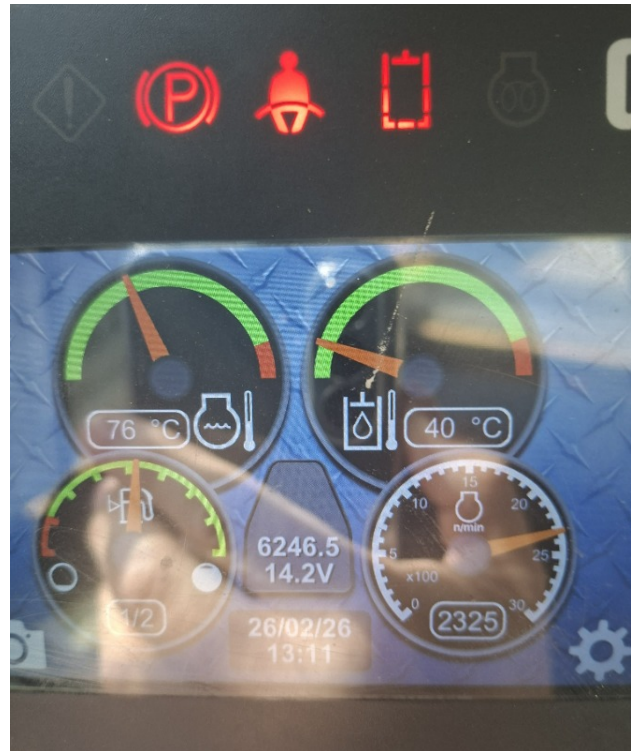
---

◆ Il contaore e':

Funzionante







**GENERAL APPEARANCE**

◆ Painting Conditions	Good
◆ Counterweight conditions	Good
	Needs painting? : No
◆ Frame/Bumper conditions	Poor
◆ Door conditions (left)	Good

**Truck**

◆ Front Idler residual	50
◆ Front drive sprocket residual:	50
◆ Bottom rollers residual:	50
◆ Grousers residual:	10
◆ Chains residual:	50

## Functionality

---

### Engine & electrical system functionality

---

◆ In quale stato è stata visionata la macchina:	Accesa e provata per ispezione
◆ Engine working conditions:	Good
◆ Engine with oil leaks:	No
◆ Engine presents blowby:	No
◆ Oil-Water presence:	No
◆ Engine present smokiness:	No
◆ Radiator conditions:	Good
◆ Starter motor conditions:	Good
◆ Batteries/Cables conditions:	Good
◆ Presence of electrical fault:	No

### Functionality drive and rotation

- ◆ Hydraulic pump conditions: Good

---

- ◆ Brakes and steering clutches conditions: Good

---

- ◆ Engine travel conditions: Good

---

- ◆ Final drives conditions: Good

---

**Linkage Group**

- ◆ Tenuta idraulica braccio (il braccio cala): No

---

- ◆ Boom structure: Good

Photos

Presence of welding/cracks : No



- ◆ Flexible pipes conditions: Good

---

- ◆ Pins & Bushings boom conditions: Good

---

- ◆ Pins & Bushings stick conditions: Good

---

- ◆ Pins & Bushings bucket conditions: Poor

---

- ◆ Bucket/Get conditions Good

---

- ◆ Funzionamento Impianto Ingrassaggio Automatico: No

---

## Cabin and Tools

---

◆ Conditions internal cabin:	Poor
◆ Lights & Windshield present issues_	Present and not functioning
◆ Air conditioning & Filters conditions:	Presents and functioning
◆ Back & side camera conditions:	Present and functioning

## Check 81/2008

---

◆ Glasses conditions:	Excellent - no needs repair
◆ Lights conditions:	Broken or Chipped - needs repair
◆ Condizioni specchietti:	Rotto o Scheggiato - necessita riparazione
◆ Stepladders & handrails conditions:	Good
◆ Cameras conditions:	Excellent - no needs repair
◆ Flashing conditions:	Present and functioning
◆ Safety belt conditions:	Present and valid
◆ Controls been modified:	No
◆ Presence of Exclusion Control Lever:	Yes
	If No, are control levers protected to accidental functionality? : Yes
◆ Are Tools Functional & Visible with tag:	Yes
◆ Canopy completed and comes with keys and bolt:	Yes
◆ All Pipes with no damage e/o scratches:	Yes

◆ Batteries box shielded: Yes

---

◆ Acoustic alarm works properly: Yes

---

◆ Boardwalk presence: Present and functioning

---

## Valutazione Macchina

### ★ Non Funzionante (NF)

La macchina si presenta non funzionante e/o in pessime condizioni. Macchina da demolire o venduta per parti di ricambio. La macchina NON è in sicurezza.

### ★★ Scarso (S)

La macchina è in cattivo stato e può presentare visibili rotture e/o crepe su tutta la struttura. Per il suo ottimale funzionamento, o per essere avviata, può necessitare di importanti riparazioni a carro/gomme, perdite d'olio, riverniciatura completa, componenti principali, messa in sicurezza.

### ★★★ Buono (B)

La macchina si presenta in buone condizioni sia estetiche che di funzionamento. Carro/Gomme hanno orientativamente un 30/40% di vita residua. La macchina non presenta importanti rotture e/o perdite d'olio. La macchina è pronta per lavorare "AS IS" anche se potrebbe richiedere piccoli interventi di riparazione/migliorie. La macchina è in sicurezza.

### ★★★★ Molto Buono (O)

La macchina si presenta in condizioni molto buone, non ha più di 5 anni e/o 5000 ore lavorate. Non presenta problemi strutturali e può essere preparata esteticamente per renderla "quasi nuova". Componenti principali non inferiori al 50/60% di vita residua, macchina in sicurezza.

### ★★★★★ Eccellente (E)

La macchina si presenta in condizioni eccellenti, prossime al nuovo. Componenti principali non inferiori al 70/80% di vita residua, macchina in sicurezza.

## Machine Rating

### ★ Not Working (NW)

Machine not operational or in really bad conditions. Machine has to be demolished or sold as a "parts". Machine not in security conditions.

### ★★ Poor (P)

Machine in bad condition, got visible cracks or repairable structural issues. Machine is operational but, in order to work properly, it may need significant repairs to tyres/truck, paint, pins and/or bushings, power train, hydraulic system.

### ★★★ Good (G)

Machine is in good condition and operational, with no structural issues. Tyres/Track around 30/40% of residual life. No relevant hydraulic leaks, pins/bushings with normal wear, frame may need to be repainted. Machine is ready to work "AS IS", it may need minor repairs for a better performance. Machine in security conditions or easy to be in safety condition.

### ★★★★ Very Good (VG)

Machine is in very good conditions, with no more of 5 years and/or 5000 working hours. No structural issues; painting condition is almost perfect. May need an easy check to be sold as "Brand New". Main components with 50/60% of life residue. Machine in security conditions.

### ★★★★★ Excellent (E)

Machine is in excellent condition, comparable to a new one. Main components-with 70/80% of life residue. Machine in security conditions.