

SALES REPORT: VENIERI 10.23#KVENI - SN 25724 - Year 2016

This Report is a summary about observations came out from technical inspection done by our specialised technician.

GENERAL CONDITIONS

MACHINE DATA

Model: 10.23#KVENI

Family: BACKHOE LOADER

Serial Number: 25724

Order Number MU/MM: MU00821915

Construction year: 2016

Hour meter: 7241

General residual conditions Truck/Tyres: %

Machine main application: Basic application

Location: Stock Off.Buniotto

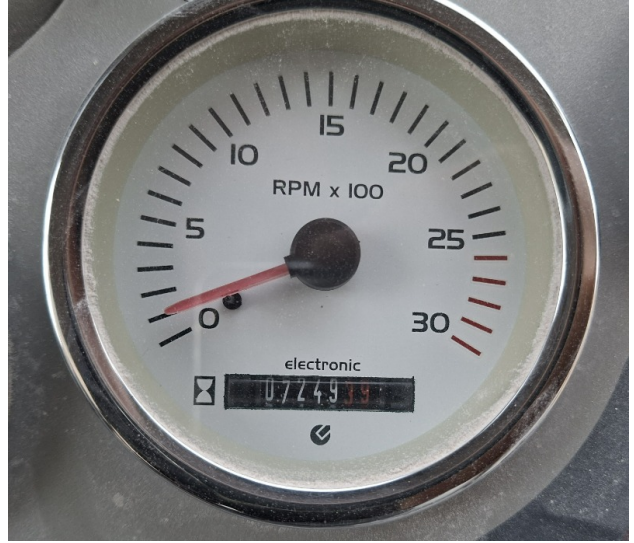
Rating: ★★☆☆☆

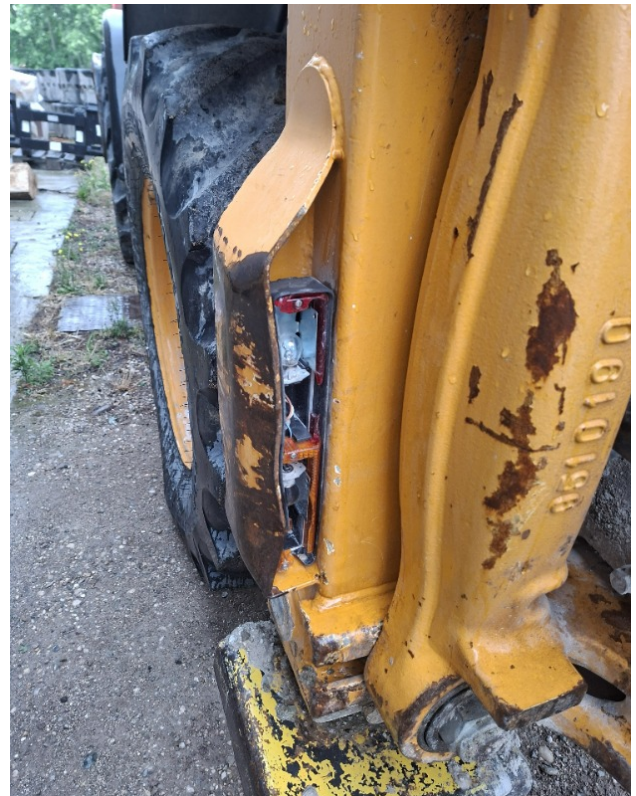
MACHINE CONFIGURATION

- Steering type Cloche • Rops Close • Transmission type Automatic • Tyres type • Quick coupler Hydraulic • Bucket Standard 1,20 mc • Differential Type Standard • Auxiliary Systems • Bucket Standard mc 1,5 • CE Mark • CE Certificate • Registration book & Licence plate undefined

MACHINE PHOTOS













GENERAL APPEARANCE

◆ Painting Conditions:	Poor
◆ Frame/Bumper conditions:	Good
◆ Door conditions:	Poor
◆ Fender/Mudguard conditions:	Good

Tyres

◆ Front Tyres residual:	30
◆ Front Tyres residual:	30

Functionality

Engine & electrical system functionality

◆ In quale stato è stata visionata la macchina:	Accesa e funzionante "al lavoro"
◆ Engine working conditions:	Good
◆ Engine with oil leaks:	Yes
◆ Engine presents blowby:	No
◆ Oil-Water presence:	No
◆ Engine present smokiness:	No
◆ Radiator conditions:	Good
◆ Starter motor conditions:	Good
◆ Batteries/Cables conditions:	Good
◆ Presence of electrical fault:	Presente

Functionality drive and rotation

◆ Hydraulic pump conditions:	Good
◆ Final drives conditions:	Good
◆ Hydraulic joint conditions:	Good
	Presence of leaks : No
◆ Gear switches go/back conditions:	Good
◆ Condizioni snodo centrale (per terna articolata):	Buono

Linkage Group

◆ Hydraulic conditions linkage group: No

◆ Boom structure: Good

Photos

Presence of welding/cracks : Yes

FOTO IN AGGIORNAMENTO



FOTO IN AGGIORNAMENTO



◆ Flexible pipes conditions: Good

◆ Boom cylinders conditions: Good

Leaks : No

◆ Bucket cylinder conditions: Good

Leaks : No

◆ Pins & Bushings boom conditions: Poor

◆ Pins & Bushings bucket conditions: Poor

◆ Quick Coupler conditions: Good

◆ Bucket & Get conditions: Good

◆ Auto Lube working conditions: No

Linkage Group

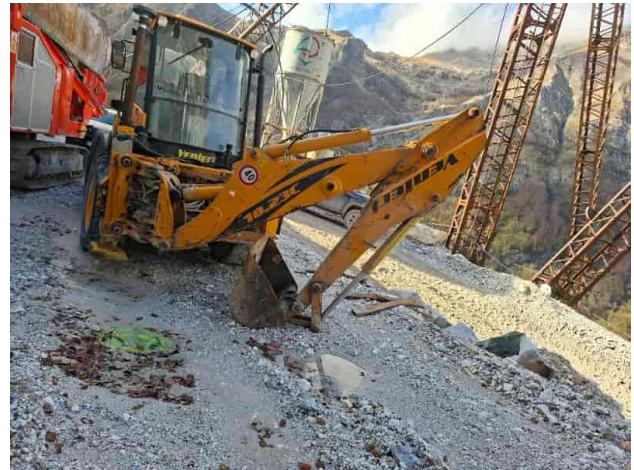
◆ Hydraulic conditions linkage group: No

◆ Condizioni snodo / brandeggio braccio: Buono

◆ Boom structure: Good

Photos

Presence of welding/cracks : Yes



◆ Flexible pipes conditions: Poor

◆ Boom cylinders conditions: Good

Leaks : No

◆ Condizioni cilindri avambraccio: Buono

◆ Bucket cylinder conditions: Good

Leaks : No

◆ Pins & Bushings boom conditions: Good

◆ Condizione perni e boccole avambraccio (verifica gioco): Buono

◆ Pins & Bushings bucket conditions: Poor

◆ Quick Coupler conditions: NA - Not applicable

◆ Bucket & Get conditions: Good

◆ Auto Lube working conditions: No

Cabin and Tools

◆ Conditions internal cabin:	Poor
◆ Lights & Windshield present issues:	Present and not functioning
◆ Air conditioning & Filters conditions:	Not functioning

Check 81/2008

◆ Condizioni freni:	Buono
◆ Condizioni freno di Stazionamento:	Scarso
◆ Glass conditions:	Excellent - no needs repair
◆ Lights conditions:	Broken or Chipped - needs repair
◆ Condizioni specchietti:	Rotto o Scheggiato - necessita riparazione
◆ Stepladders & handrails conditions:	Good
◆ Cameras conditions:	Broken or Chipped - needs repair
◆ Flashing conditions:	Not functioning
◆ Safety belt conditions:	Present and expired
◆ Controls been modified:	No
◆ Presence of Exclusion Control Lever:	Yes
◆ Are Tools Functional & Visible with tag:	Yes
◆ Canopy completed and comes with keys and bolt:	No
◆ All Pipes with no damage e/o scratches:	No
◆ Batteries box shielded:	Yes

◆ Acoustic alarm works properly: No

◆ Boardwalk presence: Present and functioning

Valutazione Macchina

★ Non Funzionante (NF)

La macchina si presenta non funzionante e/o in pessime condizioni. Macchina da demolire o venduta per parti di ricambio. La macchina NON è in sicurezza.

★★ Scarso (S)

La macchina è in cattivo stato e può presentare visibili rotture e/o crepe su tutta la struttura. Per il suo ottimale funzionamento, o per essere avviata, può necessitare di importanti riparazioni a carro/gomme, perdite d'olio, riverniciatura completa, componenti principali, messa in sicurezza.

★★★ Buono (B)

La macchina si presenta in buone condizioni sia estetiche che di funzionamento. Carro/Gomme hanno orientativamente un 30/40% di vita residua. La macchina non presenta importanti rotture e/o perdite d'olio. La macchina è pronta per lavorare "AS IS" anche se potrebbe richiedere piccoli interventi di riparazione/migliorie. La macchina è in sicurezza.

★★★★ Molto Buono (O)

La macchina si presenta in condizioni molto buone, non ha più di 5 anni e/o 5000 ore lavorate. Non presenta problemi strutturali e può essere preparata esteticamente per renderla "quasi nuova". Componenti principali non inferiori al 50/60% di vita residua, macchina in sicurezza.

★★★★★ Eccellente (E)

La macchina si presenta in condizioni eccellenti, prossime al nuovo. Componenti principali non inferiori al 70/80% di vita residua, macchina in sicurezza.

Machine Rating

★ Not Working (NW)

Machine not operational or in really bad conditions. Machine has to be demolished or sold as a "parts". Machine not in security conditions.

★★ Poor (P)

Machine in bad condition, got visible cracks or repairable structural issues. Machine is operational but, in order to work properly, it may need significant repairs to tyres/truck, paint, pins and/or bushings, power train, hydraulic system.

★★★ Good (G)

Machine is in good condition and operational, with no structural issues. Tyres/Track around 30/40% of residual life. No relevant hydraulic leaks, pins/bushings with normal wear, frame may need to be repainted. Machine is ready to work "AS IS", it may need minor repairs for a better performance. Machine in security conditions or easy to be in safety condition.

★★★★ Very Good (VG)

Machine is in very good conditions, with no more of 5 years and/or 5000 working hours. No structural issues; painting condition is almost perfect. May need an easy check to be sold as "Brand New". Main components with 50/60% of life residue. Machine in security conditions.

★★★★★ Excellent (E)

Machine is in excellent condition, comparable to a new one. Main components-with 70/80% of life residue. Machine in security conditions.