

SALES REPORT: CATERPILLAR 330 NG - SN XNB00### - Year 2020

This Report is a summary about observations comes out from technical inspection done by our specialised technician.

GENERAL CONDITIONS

MACHINE DATA

Model: 330 NG

Family: MEDIUM EXCAVATOR

Serial Number: XNB00###

Order Number MU/MM: MU00823039

Construction year: 2020

Hour meter: 6621

General residual conditions Truck/Tyres: 70 %

Machine main application: Basic application

Machine availability date : 22/04/2026

Location: Coming in

Rating: ★★☆☆☆

Public price: Ask

MACHINE CONFIGURATION

● Machine type Standard ● Boom type Mono boom ● Boom check valves ● Stick check valves ● Plant features Versatility impianto dedicato all'attacco rapido ● Bucket Standard Get undefined ● Truck type Fixed ● General Truck Residual 70% ● Cabin type Fixed standard ● Air Conditioning system ● Auto Lube system ● Product Link ● 30800 Kg ● CE Mark ● CE Certificate ● Use and maintenance manual ● AVAILABLE FROM JUNE

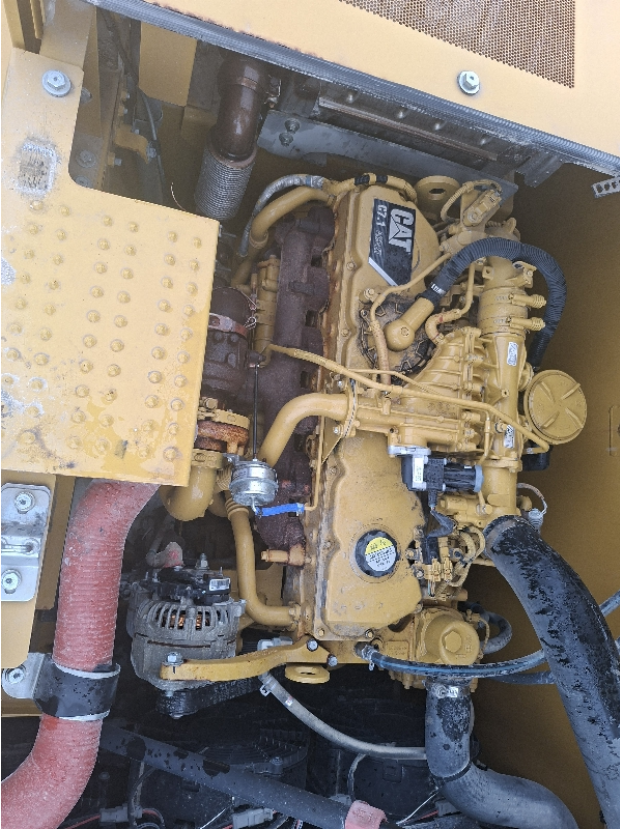
MACHINE PHOTOS

◆ Il contaore è:

Funzionante









GENERAL APPEARANCE

- ◆ Painting Conditions Very Good

- ◆ Counterweight conditions: Good

- ◆ Frame/Bumper conditions: Very Good

TRUCK

◆ Sprockets residual:	70
◆ Front idler wheel residual:	70
◆ Rollers upper/bottom residual:	70
◆ Chains residual:	70
◆ Altre anomalie	Sportello motore superiore con maniglia non funzionante.

Right side

◆ Door conditions (right):	Good
◆ Spar conditions:	Good
◆ Other issues:	Sportello filtro aria sistemato a regola con bulloni.

Left side

◆ Door conditions (left):	Good
◆ Door conditions (left):	Good
◆ Spar conditions (left):	Good
◆ Hood/Armor bottom conditions:	Present and intact

Functionality

Engine & electrical system functionality

◆ In quale stato è stata visionata la macchina:	Accesa e provata per ispezione
---	--------------------------------

- ◆ Engine working conditions: Very good

- ◆ Engine with oil leaks: No

- ◆ Engine presents blowby: No

- ◆ Oil-Water presence: No

- ◆ Engine present smokiness: No

- ◆ Radiator conditions: Very good

- ◆ Starter motor conditions: Very good

- ◆ Batteries/Cables conditions: Very good

- ◆ Presence of electrical fault: No

Functionality drive and rotation

- ◆ Hydraulic pump conditions: Very good

- ◆ Engine rotation conditions: Very good

- ◆ Engine travel conditions: Very good

- ◆ Final drives conditions: Good

- ◆ Hydraulic joint conditions: Good
Presence of leaks : No

- ◆ Hydraulic joint conditions: Good
Presence of leaks : No

Linkage Group

- ◆ Hydraulic conditions linkage group: No

◆ Boom structure:	Good
	Presence of welding/cracks : No
<hr/>	
◆ Stick structure:	Good
	Presence of welding/cracks : No
<hr/>	
◆ Flexible pipes conditions:	Very good
<hr/>	
◆ Boom cylinders conditions:	Good
	Leaks : No
<hr/>	
◆ Stick cylinder conditions:	Good
	Leaks : No
<hr/>	
◆ Bucket cylinder conditions:	Good
	Leaks : No
<hr/>	
◆ Pins & Bushings boom conditions:	Good
<hr/>	
◆ Pins & Bushings stick conditions:	Good
<hr/>	
◆ Pins & Bushings bucket conditions:	Good
<hr/>	
◆ Bucket & Get conditions:	Good
<hr/>	
◆ Quick Coupler conditions:	NA - Not applicable
<hr/>	
◆ Auto Lube working conditions:	SI
<hr/>	

Cabin and Tools

◆ Conditions internal cabin:	Good
<hr/>	
◆ Flashing presents issues:	No
<hr/>	
◆ Lights & Windshield present issues:	Presents and functioning
<hr/>	
◆ Air conditioning is working:	Presente e funzionante
<hr/>	

◆ Back & side camera conditions: Present and functioning

Check 81/2008

◆ Glass conditions: Excellent - no needs repair

◆ Lights conditions: Excellent - no needs repair

◆ Rear view mirrors conditions: Excellent - no needs repair

◆ Stepladders & handrails conditions: Very good

◆ Cameras conditions: Excellent - no needs repair

◆ Flashing conditions: Not functioning

◆ Safety belt conditions: Present and valid

◆ Controls been modified: No

◆ Presence of Exclusion Control Lever: Yes

◆ Are Tools Functional & Visible with tag: Yes

◆ Canopy completed and comes with keys and bolt: Yes

◆ All Pipes with no damage e/o scratches: Yes

◆ Batteries box shielded: Yes

◆ Acoustic alarm works properly: Yes

◆ Boardwalk presence: Present and functioning

Valutazione Macchina

★ Non Funzionante (NF)

La macchina si presenta non funzionante e/o in pessime condizioni. Macchina da demolire o venduta per parti di ricambio. La macchina NON è in sicurezza.

★★ Scarso (S)

La macchina è in cattivo stato e può presentare visibili rotture e/o crepe su tutta la struttura. Per il suo ottimale funzionamento, o per essere avviata, può necessitare di importanti riparazioni a carro/gomme, perdite d'olio, riverniciatura completa, componenti principali, messa in sicurezza.

★★★ Buono (B)

La macchina si presenta in buone condizioni sia estetiche che di funzionamento. Carro/Gomme hanno orientativamente un 30/40% di vita residua. La macchina non presenta importanti rotture e/o perdite d'olio. La macchina è pronta per lavorare "AS IS" anche se potrebbe richiedere piccoli interventi di riparazione/migliorie. La macchina è in sicurezza.

★★★★ Molto Buono (O)

La macchina si presenta in condizioni molto buone, non ha più di 5 anni e/o 5000 ore lavorate. Non presenta problemi strutturali e può essere preparata esteticamente per renderla "quasi nuova". Componenti principali non inferiori al 50/60% di vita residua, macchina in sicurezza.

★★★★★ Eccellente (E)

La macchina si presenta in condizioni eccellenti, prossime al nuovo. Componenti principali non inferiori al 70/80% di vita residua, macchina in sicurezza.

Machine Rating

★ Not Working (NW)

Machine not operational or in really bad conditions. Machine has to be demolished or sold as a "parts". Machine not in security conditions.

★★ Poor (P)

Machine in bad condition, got visible cracks or repairable structural issues. Machine is operational but, in order to work properly, it may need significant repairs to tyres/truck, paint, pins and/or bushings, power train, hydraulic system.

★★★ Good (G)

Machine is in good condition and operational, with no structural issues. Tyres/Track around 30/40% of residual life. No relevant hydraulic leaks, pins/bushings with normal wear, frame may need to be repainted. Machine is ready to work "AS IS", it may need minor repairs for a better performance. Machine in security conditions or easy to be in safety condition.

★★★★ Very Good (VG)

Machine is in very good conditions, with no more of 5 years and/or 5000 working hours. No structural issues; painting condition is almost perfect. May need an easy check to be sold as "Brand New". Main components with 50/60% of life residue. Machine in security conditions.

★★★★★ Excellent (E)

Machine is in excellent condition, comparable to a new one. Main components-with 70/80% of life residue. Machine in security conditions.