

## SALES REPORT: CATERPILLAR M315F - SN F4D00### - Year 2018

This Report is a summary about observations comes out from technical inspection done by our specialised technician.

### GENERAL CONDITIONS

---

### MACHINE DATA

---

**Model:** M315F

**Family:** WHEEL EXCAVATOR

**Serial Number:** F4D00###

**Order Number MU/MM:** MU00823929

**Construction year:** 2018

**Hour meter:** 11012

**General residual conditions Truck/Tyres:** 30 %

**Machine main application:** Basic application

**Machine availability date :** 29/05/2026

**Location:** Coming in

**Rating:** ★★☆☆☆

**Public price:** Ask

### MACHINE CONFIGURATION

---

● Machine type Standard ● Boom type Triple boom ● Boom check valves ● Stick check valves ● Plant features Versatility impianto dedicato all'attacco rapido linea drenaggio ● Quick coupler Hydraulic CAT UNIVERSALE ● Bucket / Grapple Standard Get Get 1000 ● Tyres type Twin Wheel ● General Tyres Residual 30 10.00 20 Kamso ● Blade ● Stabilizers 2 Stabilizers ● Cabin type Fixed standard ● Cabin fog Upper ● Air Conditioning system ● Auto lube system ● Product Link ● 16000 Kg ● CE Mark ● CE Certificate ● Use and maintenance manual ● Registration book & Licence plate Registration book & Licence plate AK Y720● AVAILABLE FROMY MAY

**MACHINE PHOTOS**

---

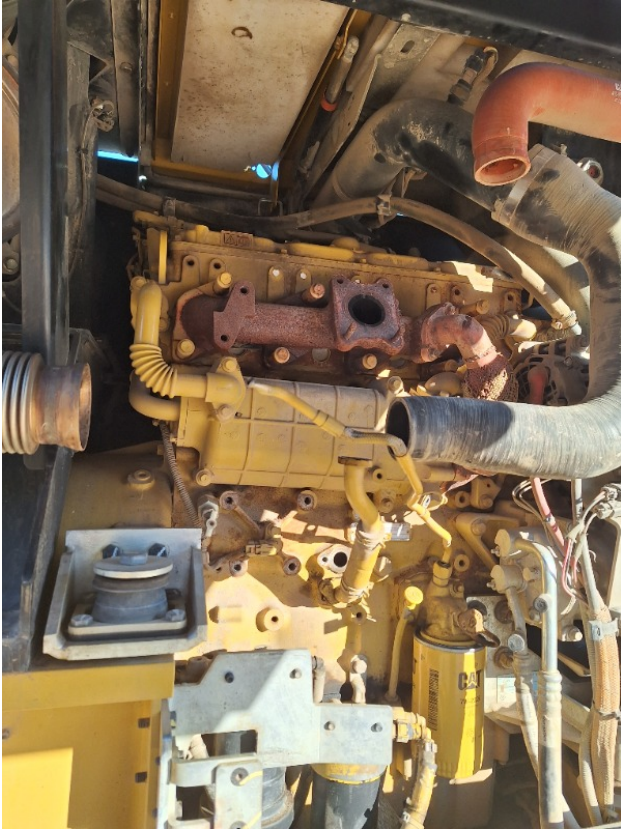
◆ Il contaore e':

Funzionante









**GENERAL APPEARANCE**

---

◆ Painting Conditions Very Good

---

◆ Counterweight conditions Good

Needs painting? : No

---

◆ Frame / Bumper conditions Good

---

### Tyres

---

◆ Front Tyres residual 30

---

◆ Front Tyres residual 30

---

### Right side

---

◆ Door conditions (right) Very good

---

◆ Spar conditions (right) Very good

---

### Left side

---

◆ Door conditions (left) Very good

---

◆ Door conditions (left) Very good

---

◆ Spar conditions (left) Very good

---

◆ Hood / Armor bottom conditions Present and intact

---

### Functionality

---

#### Engine & electrical system functionality

---

◆ In quale stato è stata visionata la macchina: Non funzionante

◆ Engine functionality conditions	Good
◆ Engine with oil leaks	No
◆ Engine presents blowby	No
◆ Oil-Water presence	No
◆ Engine present smokiness	No
◆ Radiator conditions	Very good
◆ Starter motor conditions	Good
◆ Batteries/Cables conditions	Poor
◆ Presence of electrical fault	Si

If present, add details : MACCHINA OGGETTO DI ATTO VANDALICO - PREVENTIVO DI RIPARAZIONE

### Functionality drive and rotation

◆ Hydraulic pump conditions	Good
◆ Engine rotation conditions	Good
◆ Engine travel conditions	Good
◆ Final drives conditions	Good
◆ Hydraulic joint conditions	Good
	Presence of leaks : No
◆ Hydraulic joint conditions	Good
	Presence of leaks : No
◆ Tenuta idraulica braccio (il braccio cala):	No

### Linkage Group

---

◆ Hydraulic conditions linkage group (Boom is lowering?)	Yes
<hr/>	
◆ Boom structure	Good
	Presence of welding/cracks : No
<hr/>	
◆ Stick structure	Good
	Presence of welding/cracks : No
<hr/>	
◆ Flexible pipes conditions	Good
<hr/>	
◆ Boom cylinders conditions	Good
	Leaks : No
<hr/>	
◆ Stick cylinder conditions	Good
	Leaks : No
<hr/>	
◆ Bucket / Grapple cylinder conditions	NA - Not applicable
	Leaks : No
<hr/>	
◆ Pins & Bushings boom conditions	Good
<hr/>	
◆ Pins & Bushings stick conditions	Good
<hr/>	
◆ Pins & Bushings bucket conditions	Good
<hr/>	
◆ Bucket / Grapple & Get conditions	NA - Not applicable
<hr/>	
◆ Quick Coupler conditions	Very good
<hr/>	
◆ Funzionamento Impianto Ingrassaggio Automatico:	Sì
<hr/>	

### Cabin and Tools

---

◆ Conditions internal cabin	Good
<hr/>	
◆ Flashing presents issues	Yes
<hr/>	

◆ Lights & Windshield present issues Presents and functioning

---

◆ Air conditioning & Filters conditions Presents and functioning

---

◆ Back & side camera conditions Present and functioning

---

### Check 81/2008

---

◆ Condizioni freni: Buono

---

◆ Condizioni freno di Stazionamento: Buono

---

◆ Glass conditions Excellent - no needs repair

---

◆ Lights conditions Excellent - no needs repair

---

◆ Rear view mirrors conditions Broken or Chipped - needs repair

---

◆ Stepladders & handrails conditions Good

---

◆ Cameras conditions Excellent - no needs repair

---

◆ Flashing conditions Present and functioning

---

◆ Safety belt conditions Present and expired

---

◆ Controls been modified No

---

◆ Presence of Exclusion Control Lever Yes

---

◆ Are Tools Functional & Visible with tag No

---

◆ Canopy completed and comes with keys and bolt Yes

---

◆ All Pipes with no damage e/o scratches Yes

---

◆ Batteries box shielded Yes

---

◆ Acoustic alarm works properly Yes

---

◆ Boardwalk presence

Not present

---

## Valutazione Macchina

### ★ Non Funzionante (NF)

La macchina si presenta non funzionante e/o in pessime condizioni. Macchina da demolire o venduta per parti di ricambio. La macchina NON è in sicurezza.

### ★★ Scarso (S)

La macchina è in cattivo stato e può presentare visibili rotture e/o crepe su tutta la struttura. Per il suo ottimale funzionamento, o per essere avviata, può necessitare di importanti riparazioni a carro/gomme, perdite d'olio, riverniciatura completa, componenti principali, messa in sicurezza.

### ★★★ Buono (B)

La macchina si presenta in buone condizioni sia estetiche che di funzionamento. Carro/Gomme hanno orientativamente un 30/40% di vita residua. La macchina non presenta importanti rotture e/o perdite d'olio. La macchina è pronta per lavorare "AS IS" anche se potrebbe richiedere piccoli interventi di riparazione/migliorie. La macchina è in sicurezza.

### ★★★★ Molto Buono (O)

La macchina si presenta in condizioni molto buone, non ha più di 5 anni e/o 5000 ore lavorate. Non presenta problemi strutturali e può essere preparata esteticamente per renderla "quasi nuova". Componenti principali non inferiori al 50/60% di vita residua, macchina in sicurezza.

### ★★★★★ Eccellente (E)

La macchina si presenta in condizioni eccellenti, prossime al nuovo. Componenti principali non inferiori al 70/80% di vita residua, macchina in sicurezza.

## Machine Rating

### ★ Not Working (NW)

Machine not operational or in really bad conditions. Machine has to be demolished or sold as a "parts". Machine not in security conditions.

### ★★ Poor (P)

Machine in bad condition, got visible cracks or repairable structural issues. Machine is operational but, in order to work properly, it may need significant repairs to tyres/truck, paint, pins and/or bushings, power train, hydraulic system.

### ★★★ Good (G)

Machine is in good condition and operational, with no structural issues. Tyres/Track around 30/40% of residual life. No relevant hydraulic leaks, pins/bushings with normal wear, frame may need to be repainted. Machine is ready to work "AS IS", it may need minor repairs for a better performance. Machine in security conditions or easy to be in safety condition.

### ★★★★ Very Good (VG)

Machine is in very good conditions, with no more of 5 years and/or 5000 working hours. No structural issues; painting condition is almost perfect. May need an easy check to be sold as "Brand New". Main components with 50/60% of life residue. Machine in security conditions.

### ★★★★★ Excellent (E)

Machine is in excellent condition, comparable to a new one. Main components-with 70/80% of life residue. Machine in security conditions.