

## SALES REPORT: CASE SR270 - SN LJM455169 - Year 2018

This Report is a summary about observations came out from technical inspection done by our specialised technician.

### GENERAL CONDITIONS

---

#### MACHINE DATA

---

**Model:** SR270

**Family:** SKID STEER LOADER

**Serial Number:** LJM455169

**Order Number MU/MM:** MU00823958

**Construction year:** 2018

**Hour meter:** 4580

**General residual conditions Truck/Tyres:** 60 %

**Machine main application:** Basic application

**Location:** Stock Off.Buniotto

**Rating:** ★★☆☆☆

**Public price:** Ask

#### MACHINE CONFIGURATION

---

● Machine type Wasting configuration ● Rops Close ● Bucket Standard 1800 Get Cover Blade ● Plant features ● General Truck Residual 60% ● Air Conditioning system ● 3350 Kg ● CE Mark ● CE Certificate ● EPA Tag ● undefined

**MACHINE PHOTOS**

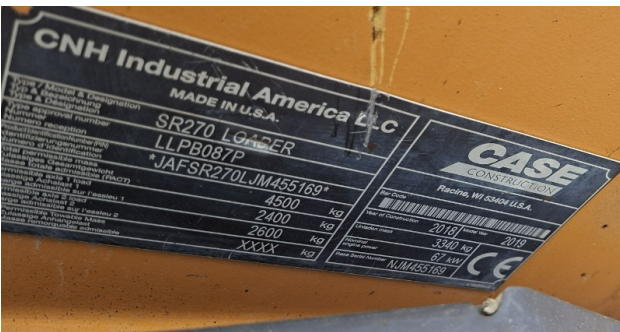
---

◆ Il contaore e':

Funzionante









## GENERAL APPEARANCE

---

◆ Painting Conditions	Good
<hr/>	
◆ Counterweight conditions	Good
	Needs painting? : No
<hr/>	
◆ Frame/Bumper conditions	Good
<hr/>	
◆ Door conditions (left)	Good
<hr/>	

## Truck

---

◆ Front Idler residual	60
<hr/>	

◆ Front drive sprocket residual: 60

---

## Functionality

---

### Engine & electrical system functionality

---

◆ In quale stato è stata visionata la macchina: Accesa e provata per ispezione

---

◆ Engine working conditions: Good

---

◆ Engine with oil leaks: No

---

◆ Engine presents blowby: No

---

◆ Oil-Water presence: No

---

◆ Engine present smokiness: No

---

◆ Radiator conditions: Good

---

◆ Starter motor conditions: Good

---

◆ Batteries/Cables conditions: Poor

---

◆ Presence of electrical fault: Sì

---

### Functionality drive and rotation

---

◆ Hydraulic pump conditions: Good

---

◆ Brakes and steering cluthces conditions: NA - Not applicable

---

◆ Engine travel conditions: Good

---

◆ Final drives conditions: Good

---

**Linkage Group**

---

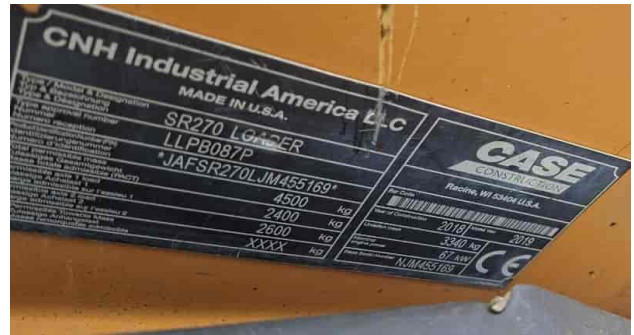
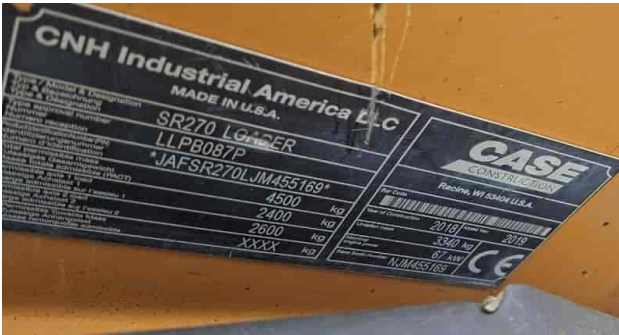
◆ Tenuta idraulica braccio (il braccio cala): No

---

◆ Boom structure: Good

Photos

Presence of welding/cracks : No



◆ Flexible pipes conditions: Poor

---

◆ Pins & Bushings boom conditions: Good

---

◆ Pins & Bushings stick conditions: Good

---

◆ Pins & Bushings bucket conditions: Poor

---

◆ Bucket/Get conditions Good

---

◆ Funzionamento Impianto Ingrassaggio Automatico: No

---

**Cabin and Tools**

---

◆ Conditions internal cabin: Good

---

◆ Lights & Windshield present issues\_ Present and not functioning

---

◆ Air contidioning & Filters conditions: Present and not functioning

---

◆ Back & side camera conditions: Not functioning

---

**Check 81/2008**

---

◆ Glasses conditions:	Excellent - no needs repair
◆ Lights conditions:	Broken or Chipped - needs repair
◆ Condizioni specchietti:	Mancanti
◆ Stepladders & handrails conditions:	NA - Not applicable
◆ Cameras conditions:	Non presente
◆ Flashing conditions:	Not functioning
◆ Safety belt conditions:	Present and valid
◆ Controls been modified:	No
◆ Presence of Exclusion Control Lever:	Yes
◆ Are Tools Functional & Visible with tag:	Yes
◆ Canopy completed and comes with keys and bolt:	Yes
◆ All Pipes with no damage e/o scratches:	Yes
◆ Batteries box shielded:	Yes
◆ Acustic alarm works properly:	Yes
◆ Boardwalk presence:	Not present

---

## Valutazione Macchina

### ★ Non Funzionante (NF)

La macchina si presenta non funzionante e/o in pessime condizioni. Macchina da demolire o venduta per parti di ricambio. La macchina NON è in sicurezza.

### ★★ Scarso (S)

La macchina è in cattivo stato e può presentare visibili rotture e/o crepe su tutta la struttura. Per il suo ottimale funzionamento, o per essere avviata, può necessitare di importanti riparazioni a carro/gomme, perdite d'olio, riverniciatura completa, componenti principali, messa in sicurezza.

### ★★★ Buono (B)

La macchina si presenta in buone condizioni sia estetiche che di funzionamento. Carro/Gomme hanno orientativamente un 30/40% di vita residua. La macchina non presenta importanti rotture e/o perdite d'olio. La macchina è pronta per lavorare "AS IS" anche se potrebbe richiedere piccoli interventi di riparazione/migliorie. La macchina è in sicurezza.

### ★★★★ Molto Buono (O)

La macchina si presenta in condizioni molto buone, non ha più di 5 anni e/o 5000 ore lavorate. Non presenta problemi strutturali e può essere preparata esteticamente per renderla "quasi nuova". Componenti principali non inferiori al 50/60% di vita residua, macchina in sicurezza.

### ★★★★★ Eccellente (E)

La macchina si presenta in condizioni eccellenti, prossime al nuovo. Componenti principali non inferiori al 70/80% di vita residua, macchina in sicurezza.

## Machine Rating

### ★ Not Working (NW)

Machine not operational or in really bad conditions. Machine has to be demolished or sold as a "parts". Machine not in security conditions.

### ★★ Poor (P)

Machine in bad condition, got visible cracks or repairable structural issues. Machine is operational but, in order to work properly, it may need significant repairs to tyres/truck, paint, pins and/or bushings, power train, hydraulic system.

### ★★★ Good (G)

Machine is in good condition and operational, with no structural issues. Tyres/Track around 30/40% of residual life. No relevant hydraulic leaks, pins/bushings with normal wear, frame may need to be repainted. Machine is ready to work "AS IS", it may need minor repairs for a better performance. Machine in security conditions or easy to be in safety condition.

### ★★★★ Very Good (VG)

Machine is in very good conditions, with no more of 5 years and/or 5000 working hours. No structural issues; painting condition is almost perfect. May need an easy check to be sold as "Brand New". Main components with 50/60% of life residue. Machine in security conditions.

### ★★★★★ Excellent (E)

Machine is in excellent condition, comparable to a new one. Main components-with 70/80% of life residue. Machine in security conditions.