

SALES REPORT: HITACHI ZX210W-MH#KHITA - SN 440001### - Year 2008

This Report is a summary about observations comes out from technical inspection done by our specialised technician.

GENERAL CONDITIONS

MACHINE DATA

Model: ZX210W-MH#KHITA

Family: WHEEL EXCAVATOR

Serial Number: 440001###

Order Number MU/MM: MU00824023

Construction year: 2008

Hour meter: 15740

General residual conditions Truck/Tyres: 80 %

Machine main application: Industry - not corrosive field

Machine availability date : 01/05/2026

Location: Coming in

Rating: ★★☆☆☆

Public price: Ask

MACHINE CONFIGURATION

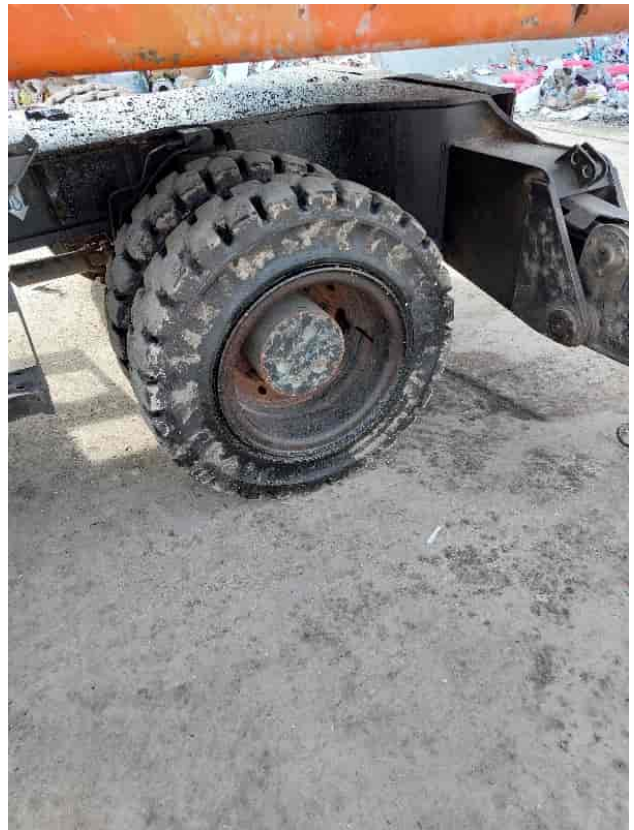
● Machine type Material Handling MH ● Boom type Mono boom ● Boom check valves ● Stick check valves ● Plant features Versatility Impianto per magneti ● Bucket / Grapple Grapple Get Get Polipo rozzi ● Tyres type Twin Wheel ● General Tyres Residual 80 10.00-20 Aaaa ● Stabilizers 4 Stabilizers ● Cabin type Hydraulic lift ● Cabin fog Front ● Air Conditioning system Operation Yes ● Auto lube system Operation Yes ● 26000 Kg ● CE Mark ● CE Certificate ● Use and maintenance manual ● Registration book & Licence plate No Registration book & Licence plate ● AVAILABLE FROM JUNE

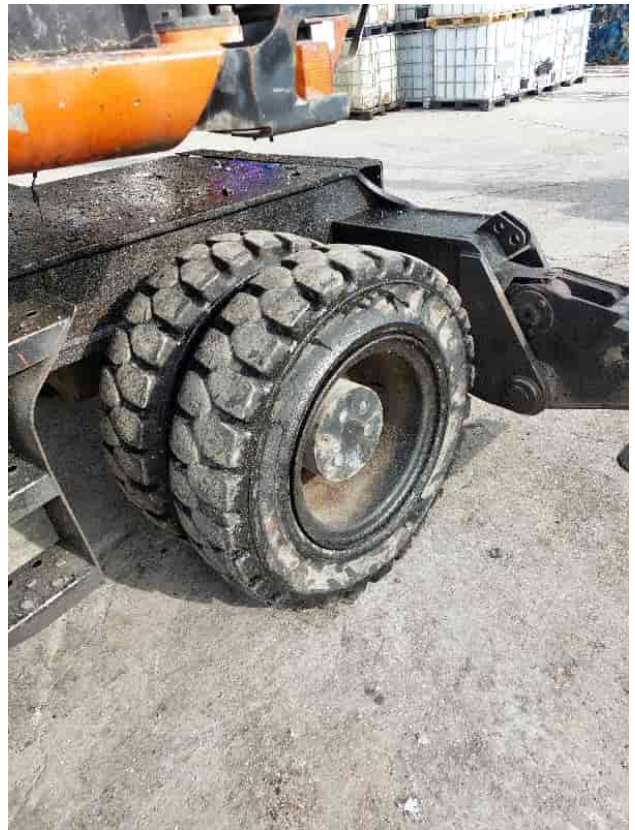
MACHINE PHOTOS

◆ Il contaore e':

Funzionante

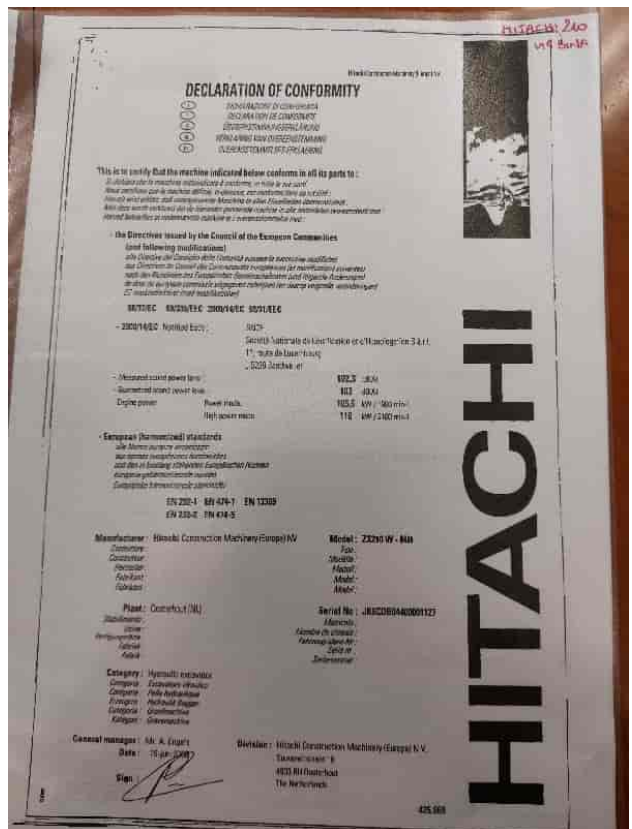














GENERAL APPEARANCE

◆ Painting Conditions Poor

◆ Counterweight conditions Good

Needs painting? : No

◆ Frame / Bumper conditions Good

Tyres

◆ N/D 80

◆ N/D 80

Right side

◆ N/D Good

◆ N/D Good

Left side

◆ N/D Good

◆ N/D Good

◆ N/D Good

◆ N/D Sportello con leggera ammaccatura

◆ Hood / Armor bottom conditions Present and intact

Functionality

Engine & electrical system functionality

◆ N/D	Accesa e funzionante "al lavoro"
◆ N/D	Good
◆ N/D	No
◆ N/D	No
◆ N/D	No
◆ N/D	No
◆ N/D	Good
◆ N/D	Good
◆ N/D	Good
◆ N/D	No

Functionality drive and rotation

◆ N/D	Good
◆ N/D	Good
◆ N/D	Good
◆ N/D	Good
◆ N/D	Good
	Presence of leaks : No
◆ N/D	Good
	Presence of leaks : No
◆ N/D	No

Linkage Group

◆ N/D	Yes
◆ N/D	Good Presence of welding/cracks : No
◆ N/D	Good Presence of welding/cracks : No
◆ N/D	Good
◆ N/D	Good Leaks : No
◆ N/D	Good Leaks : No
◆ N/D	Good Leaks : No
◆ N/D	Good
◆ N/D	Good
◆ N/D	Good
◆ N/D	Good
◆ N/D	NA - Not applicable
◆ N/D	Si

Cabin and Tools

◆ Conditions internal cabin	Good
-----------------------------	------

◆ Flashing presents issues	No
◆ Lights & Windshield present issues	Presents and functioning
◆ Air contidioning & Filters conditions	Present and not functioning
◆ Back & side camera conditions	Present and functioning
◆ Annotazioni su:	Aria condizionata da ricaricare

Check 81/2008

◆ Condizioni freni:	Buono
◆ Condizioni freno di Stazionamento:	Buono
◆ Glass conditions	Excellent - no needs repair
◆ Lights conditions	Excellent - no needs repair
◆ Rear view mirrors conditions	Excellent - no needs repair
◆ Stepladders & handrails conditions	Good
◆ Cameras conditions	Excellent - no needs repair
◆ Flashing conditions	Not functioning
◆ Safety belt conditions	Present and expired
◆ Controls been modified	No
◆ Presence of Exclusion Control Lever	Yes
◆ Are Tools Functional & Visible with tag	Yes
◆ Canopy completed and comes with keys and bolt	Yes
◆ All Pipes with no damage e/o scratches	Yes

◆ Batteries box shielded	Yes
◆ Acoustic alarm works properly	Yes
◆ Boardwalk presence	Present and functioning

Valutazione Macchina

★ Non Funzionante (NF)

La macchina si presenta non funzionante e/o in pessime condizioni. Macchina da demolire o venduta per parti di ricambio. La macchina NON è in sicurezza.

★★ Scarso (S)

La macchina è in cattivo stato e può presentare visibili rotture e/o crepe su tutta la struttura. Per il suo ottimale funzionamento, o per essere avviata, può necessitare di importanti riparazioni a carro/gomme, perdite d'olio, riverniciatura completa, componenti principali, messa in sicurezza.

★★★ Buono (B)

La macchina si presenta in buone condizioni sia estetiche che di funzionamento. Carro/Gomme hanno orientativamente un 30/40% di vita residua. La macchina non presenta importanti rotture e/o perdite d'olio. La macchina è pronta per lavorare "AS IS" anche se potrebbe richiedere piccoli interventi di riparazione/migliorie. La macchina è in sicurezza.

★★★★ Molto Buono (O)

La macchina si presenta in condizioni molto buone, non ha più di 5 anni e/o 5000 ore lavorate. Non presenta problemi strutturali e può essere preparata esteticamente per renderla "quasi nuova". Componenti principali non inferiori al 50/60% di vita residua, macchina in sicurezza.

★★★★★ Eccellente (E)

La macchina si presenta in condizioni eccellenti, prossime al nuovo. Componenti principali non inferiori al 70/80% di vita residua, macchina in sicurezza.

Machine Rating

★ Not Working (NW)

Machine not operational or in really bad conditions. Machine has to be demolished or sold as a "parts". Machine not in security conditions.

★★ Poor (P)

Machine in bad condition, got visible cracks or repairable structural issues. Machine is operational but, in order to work properly, it may need significant repairs to tyres/truck, paint, pins and/or bushings, power train, hydraulic system.

★★★ Good (G)

Machine is in good condition and operational, with no structural issues. Tyres/Track around 30/40% of residual life. No relevant hydraulic leaks, pins/bushings with normal wear, frame may need to be repainted. Machine is ready to work "AS IS", it may need minor repairs for a better performance. Machine in security conditions or easy to be in safety condition.

★★★★ Very Good (VG)

Machine is in very good conditions, with no more of 5 years and/or 5000 working hours. No structural issues; painting condition is almost perfect. May need an easy check to be sold as "Brand New". Main components with 50/60% of life residue. Machine in security conditions.

★★★★★ Excellent (E)

Machine is in excellent condition, comparable to a new one. Main components-with 70/80% of life residue. Machine in security conditions.