

## SALES REPORT: CATERPILLAR M315 - SN KE520### - Year 2022

This Report is a summary about observations comes out from technical inspection done by our specialised technician.

### GENERAL CONDITIONS

---

### MACHINE DATA

---

**Model:** M315

**Family:** WHEEL EXCAVATOR

**Serial Number:** KE520###

**Order Number MU/MM:** MU00825370

**Construction year:** 2022

**Hour meter:** 1576

**General residual conditions Truck/Tyres:** 70 %

**Machine main application:** Basic application

**Machine availability date :** 14/04/2026

**Location:** Coming in

**Rating:** ★★☆☆☆

**Public price:** Ask

### MACHINE CONFIGURATION

---

● Machine type Standard ● Boom type Triple boom ● Boom check valves ● Stick check valves ● Plant features Versatility ● Quick coupler Hydraulic ● Bucket / Grapple Standard Get Cover Blade ● Tyres type Twin Wheel ● General Tyres Residual 70 10.00-20 Apollo ● Blade ● Stabilizers 2 Stabilizers ● Cabin type Fixed standard ● Air Conditioning system Operation Yes ● Auto lube system Operation Yes ● Product Link ● 17000 Kg ● CE Mark ● CE Certificate ● EPA Tag ● Use and maintenance manual ● Registration book & Licence plate Registration book & Licence plate AMR071 ● AVAILABLE FROM JUNE

**MACHINE PHOTOS**

---

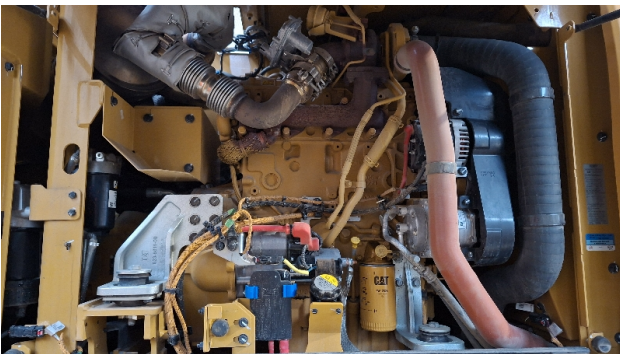
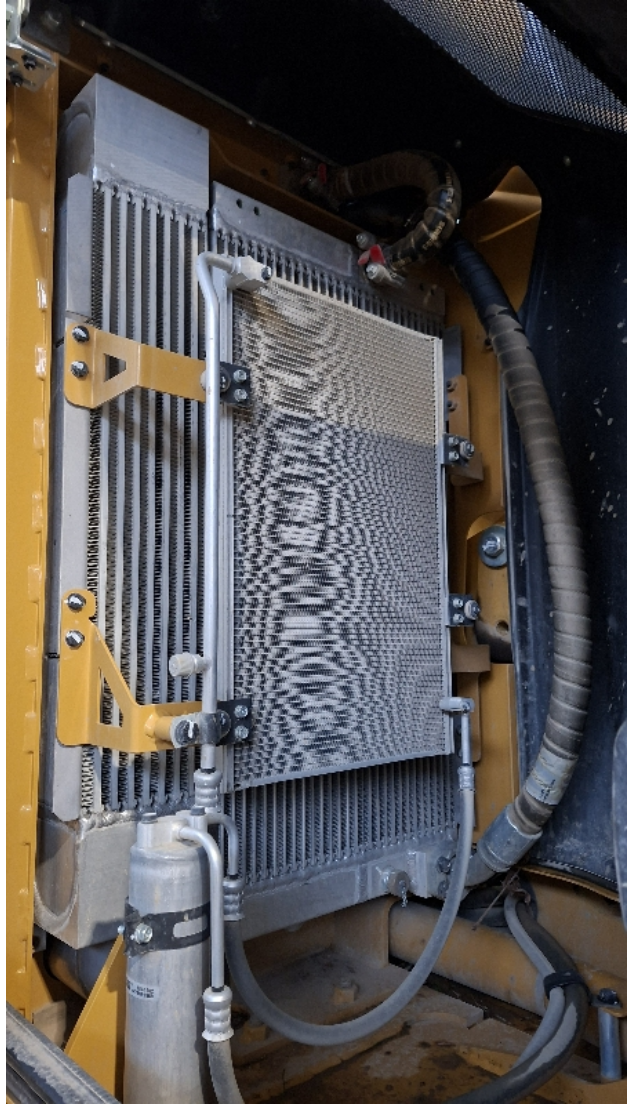
◆ Il contaore e':

Funzionante













**GENERAL APPEARANCE**

---

- ◆ Painting Conditions Very Good

---

- ◆ Counterweight conditions Very good

Needs painting? : No

---

- ◆ Frame / Bumper conditions Very Good

---

**Tyres**

---

- ◆ Front Tyres residual 70

---

◆ Front Tyres residual 70

---

### Right side

---

◆ Door conditions (right) Very good

---

◆ Spar conditions (right) Very good

---

### Left side

---

◆ Door conditions (left) Very good

---

◆ Door conditions (left) Very good

---

◆ Spar conditions (left) Very good

---

◆ Hood / Armor bottom conditions Present and intact

---

## Functionality

---

### Engine & electrical system functionality

---

◆ In quale stato è stata visionata la macchina: Accesa e provata per ispezione

---

◆ Engine functionality conditions Very good

---

◆ Engine with oil leaks No

---

◆ Engine presents blowby No

---

◆ Oil-Water presence No

---

◆ Engine present smokiness No

---

◆ Radiator conditions Very good

---

|                                |           |
|--------------------------------|-----------|
| ◆ Starter motor conditions     | Very good |
| ◆ Batteries/Cables conditions  | Very good |
| ◆ Presence of electrical fault | No        |

---

**Functionality drive and rotation**

---

|   |                                     |
|---|-------------------------------------|
| ◆ Hydraulic pump conditions                   | Very good                           |
| ◆ Engine rotation conditions                  | Very good                           |
| ◆ Engine travel conditions                    | Very good                           |
| ◆ Final drives conditions                     | Very good                           |
| ◆ Hydraulic joint conditions                  | Very good<br>Presence of leaks : No |
| ◆ Hydraulic joint conditions                  | Very good<br>Presence of leaks : No |
| ◆ Tenuta idraulica braccio (il braccio cala): | No                                  |

---

**Linkage Group**

---

|  |  |
|--|--|
| ◆ Hydraulic conditions linkage group (Boom is lowering?) | Yes  |
| ◆ Boom structure   | Very good<br>Presence of welding/cracks : No |
| ◆ Stick structure  | Very good<br>Presence of welding/cracks : No |
| ◆ Flexible pipes conditions                              | Very good                                    |
| ◆ Boom cylinders conditions                              | Very good                                    |

|   |            |
|---|------------|
|   | Leaks : No |
| ◆ Stick cylinder conditions                       | Very good  |
|   | Leaks : No |
| ◆ Bucket / Grapple cylinder conditions            | Very good  |
|   | Leaks : No |
| ◆ Pins & Bushings boom conditions                 | Very good  |
| ◆ Pins & Bushings stick conditions                | Very good  |
| ◆ Pins & Bushings bucket conditions               | Good       |
| ◆ Bucket / Grapple & Get conditions               | Very good  |
| ◆ Quick Coupler conditions                        | Very good  |
| ◆ Funzionamento Impianto Ingrassaggio Automatico: | Sì         |

### Cabin and Tools

|   |                          |
|---|--------------------------|
| ◆ Conditions internal cabin             | Very good                |
| ◆ Flashing presents issues              | Yes                      |
| ◆ Lights & Windshield present issues    | Presents and functioning |
| ◆ Air conditioning & Filters conditions | Presents and functioning |
| ◆ Back & side camera conditions         | Present and functioning  |

### Check 81/2008

|                                      |             |
|--------------------------------------|-------------|
| ◆ Condizioni freni:                  | Molto Buono |
| ◆ Condizioni freno di Stazionamento: | Molto Buono |

---

|   |                                  |
|---|----------------------------------|
| ◆ Glass conditions                              | Broken or Chipped - needs repair |
| ◆ Lights conditions                             | Excellent - no needs repair      |
| ◆ Rear view mirrors conditions                  | Excellent - no needs repair      |
| ◆ Stepladders & handrails conditions            | Very good                        |
| ◆ Cameras conditions                            | Excellent - no needs repair      |
| ◆ Flashing conditions                           | Present and functioning          |
| ◆ Safety belt conditions                        | Present and valid                |
| ◆ Controls been modified                        | No                               |
| ◆ Presence of Exclusion Control Lever           | Yes                              |
| ◆ Are Tools Functional & Visible with tag       | Yes                              |
| ◆ Canopy completed and comes with keys and bolt | Yes                              |
| ◆ All Pipes with no damage e/o scratches        | Yes                              |
| ◆ Batteries box shielded                        | Yes                              |
| ◆ Acoustic alarm works properly                 | Yes                              |
| ◆ Boardwalk presence                            | Not present                      |

---

## Valutazione Macchina

### ★ Non Funzionante (NF)

La macchina si presenta non funzionante e/o in pessime condizioni. Macchina da demolire o venduta per parti di ricambio. La macchina NON è in sicurezza.

### ★★ Scarso (S)

La macchina è in cattivo stato e può presentare visibili rotture e/o crepe su tutta la struttura. Per il suo ottimale funzionamento, o per essere avviata, può necessitare di importanti riparazioni a carro/gomme, perdite d'olio, riverniciatura completa, componenti principali, messa in sicurezza.

### ★★★ Buono (B)

La macchina si presenta in buone condizioni sia estetiche che di funzionamento. Carro/Gomme hanno orientativamente un 30/40% di vita residua. La macchina non presenta importanti rotture e/o perdite d'olio. La macchina è pronta per lavorare "AS IS" anche se potrebbe richiedere piccoli interventi di riparazione/migliorie. La macchina è in sicurezza.

### ★★★★ Molto Buono (O)

La macchina si presenta in condizioni molto buone, non ha più di 5 anni e/o 5000 ore lavorate. Non presenta problemi strutturali e può essere preparata esteticamente per renderla "quasi nuova". Componenti principali non inferiori al 50/60% di vita residua, macchina in sicurezza.

### ★★★★★ Eccellente (E)

La macchina si presenta in condizioni eccellenti, prossime al nuovo. Componenti principali non inferiori al 70/80% di vita residua, macchina in sicurezza.

## Machine Rating

### ★ Not Working (NW)

Machine not operational or in really bad conditions. Machine has to be demolished or sold as a "parts". Machine not in security conditions.

### ★★ Poor (P)

Machine in bad condition, got visible cracks or repairable structural issues. Machine is operational but, in order to work properly, it may need significant repairs to tyres/truck, paint, pins and/or bushings, power train, hydraulic system.

### ★★★ Good (G)

Machine is in good condition and operational, with no structural issues. Tyres/Track around 30/40% of residual life. No relevant hydraulic leaks, pins/bushings with normal wear, frame may need to be repainted. Machine is ready to work "AS IS", it may need minor repairs for a better performance. Machine in security conditions or easy to be in safety condition.

### ★★★★ Very Good (VG)

Machine is in very good conditions, with no more of 5 years and/or 5000 working hours. No structural issues; painting condition is almost perfect. May need an easy check to be sold as "Brand New". Main components with 50/60% of life residue. Machine in security conditions.

### ★★★★★ Excellent (E)

Machine is in excellent condition, comparable to a new one. Main components-with 70/80% of life residue. Machine in security conditions.