

SALES REPORT: CATERPILLAR 966M - SN EJA03893 - Year 2022

This Report is a summary about observations came out from technical inspection done by our specialised technician.

GENERAL CONDITIONS

MACHINE DATA

Model: 966M

Family: MEDIUM WHEEL LOADER

Serial Number: EJA03893

Order Number MU/MM: MU00825890

Construction year: 2022

Hour meter: 7403

General residual conditions Truck/Tyres: 100 %

Machine main application: Basic application

Location: Stock Milano Usato

Rating: ★★☆☆☆

Public price: Ask

MACHINE CONFIGURATION

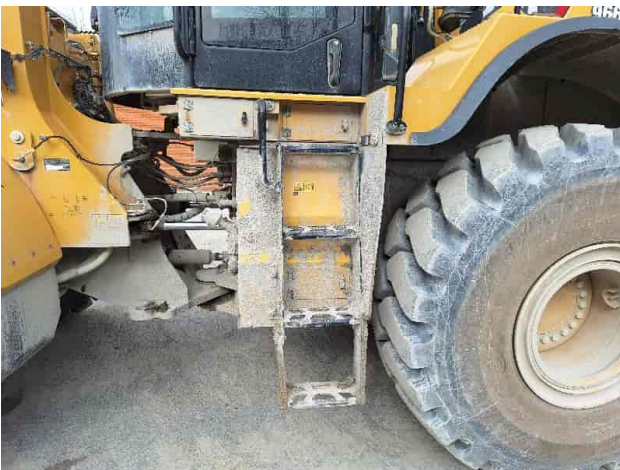
● Machine type Standard - GP ● Steering type Joystick Presence of Command Steering Yes ● Differential Type Controlled Slippage ● Transmission type Automatic ● Ride Control ● Bucket Standard 4,6 mc Get Cover Blade ● Tyres type Rock ● General Tyres Residual 100 26.5R25 Maxam ● Rops Close ● Air Conditioning system ● Auto Lube system ● Weight Scale ● Product Link ● 24000 Kg ● CE Mark ● CE Certificate ● EPA Tag ● Use and maintenance manual ● Registration book & Licence plate undefined ● AVAILABLE FROM JULY

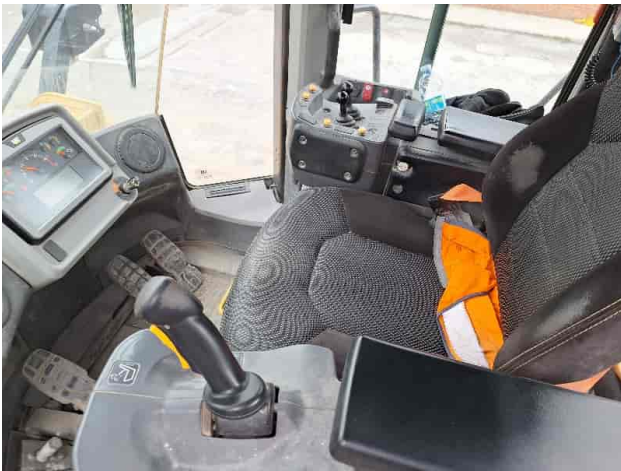
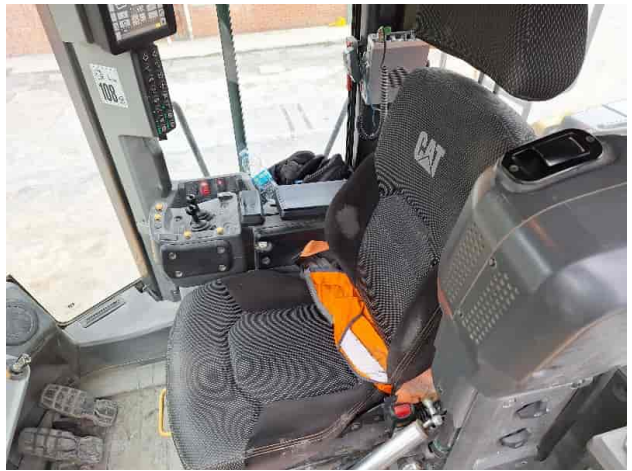
MACHINE PHOTOS

◆ Il contaore e':

Funzionante











GENERAL APPEARANCE

◆ Painting Conditions:	Very Good
<hr/>	
◆ Counterweight conditions:	Very good
	Needs painting? : No
<hr/>	
◆ Frame/Bumper conditions:	Very Good
<hr/>	
◆ Door conditions:	Very good
<hr/>	
◆ Central joint:	Very good
<hr/>	
◆ Fender/Mudguard conditions:	Good

Tyres

◆ N/D	100
<hr/>	
◆ N/D	100
<hr/>	

Functionality

Engine & electrical system functionality

◆ N/D Accesa e provata per ispezione

◆ N/D Very good

◆ N/D No

◆ N/D No

◆ N/D No

◆ N/D No

◆ N/D Very good

◆ N/D Very good

◆ N/D Very good

◆ N/D No

Functionality drive and rotation

◆ N/D Very good

◆ N/D NA - Not applicable

◆ N/D Very good

◆ N/D Very good

Presence of leaks : No

◆ N/D Very Good

Engine & electrical system functionality

◆ N/D Very good

◆ N/D Very good

◆ N/D Very good

Linkage Group

◆ N/D No

◆ N/D Very good
Presence of welding/cracks : No

◆ N/D Very good

◆ N/D Very good

◆ N/D Very good

◆ N/D Very good

◆ N/D Very good

◆ N/D NA - Not applicable

◆ N/D Si

Cabin and Tools

◆ Conditions internal cabin: Very good

◆ Lights & Windshield present issues: Presents and functioning

◆ Air conditioning & Filters conditions: Presents and functioning

◆ Back & side camera conditions: Present and functioning

Check 81/2008

◆ Condizioni freni:	Molto Buono
◆ Condizioni freno di Stazionamento:	Molto Buono
◆ Glass conditions:	Excellent - no needs repair
◆ Lights conditions:	Excellent - no needs repair
◆ Condizioni specchietti:	Eccellente - non necessita riparazione
◆ Stepladders & handrails conditions:	Very good
◆ Cameras conditions:	Excellent - no needs repair
◆ Flashing conditions:	Present and functioning
◆ Safety belt conditions:	Present and valid
◆ Controls been modified:	No
◆ Presence of Exclusion Control Lever:	Yes
◆ Are Tools Functional & Visible with tag:	Yes
◆ Canopy completed and comes with keys and bolt:	Yes
◆ All Pipes with no damage e/o scratches:	Yes
◆ Batteries box shielded:	Yes
◆ Acoustic alarm works properly:	Yes
◆ Boardwalk presence:	Present and functioning
◆ Annotazioni sul:	Vetro frontale anteriore sx venato

Valutazione Macchina

★ Non Funzionante (NF)

La macchina si presenta non funzionante e/o in pessime condizioni. Macchina da demolire o venduta per parti di ricambio. La macchina NON è in sicurezza.

★★ Scarso (S)

La macchina è in cattivo stato e può presentare visibili rotture e/o crepe su tutta la struttura. Per il suo ottimale funzionamento, o per essere avviata, può necessitare di importanti riparazioni a carro/gomme, perdite d'olio, riverniciatura completa, componenti principali, messa in sicurezza.

★★★ Buono (B)

La macchina si presenta in buone condizioni sia estetiche che di funzionamento. Carro/Gomme hanno orientativamente un 30/40% di vita residua. La macchina non presenta importanti rotture e/o perdite d'olio. La macchina è pronta per lavorare "AS IS" anche se potrebbe richiedere piccoli interventi di riparazione/migliorie. La macchina è in sicurezza.

★★★★ Molto Buono (O)

La macchina si presenta in condizioni molto buone, non ha più di 5 anni e/o 5000 ore lavorate. Non presenta problemi strutturali e può essere preparata esteticamente per renderla "quasi nuova". Componenti principali non inferiori al 50/60% di vita residua, macchina in sicurezza.

★★★★★ Eccellente (E)

La macchina si presenta in condizioni eccellenti, prossime al nuovo. Componenti principali non inferiori al 70/80% di vita residua, macchina in sicurezza.

Machine Rating

★ Not Working (NW)

Machine not operational or in really bad conditions. Machine has to be demolished or sold as a "parts". Machine not in security conditions.

★★ Poor (P)

Machine in bad condition, got visible cracks or repairable structural issues. Machine is operational but, in order to work properly, it may need significant repairs to tyres/truck, paint, pins and/or bushings, power train, hydraulic system.

★★★ Good (G)

Machine is in good condition and operational, with no structural issues. Tyres/Track around 30/40% of residual life. No relevant hydraulic leaks, pins/bushings with normal wear, frame may need to be repainted. Machine is ready to work "AS IS", it may need minor repairs for a better performance. Machine in security conditions or easy to be in safety condition.

★★★★ Very Good (VG)

Machine is in very good conditions, with no more of 5 years and/or 5000 working hours. No structural issues; painting condition is almost perfect. May need an easy check to be sold as "Brand New". Main components with 50/60% of life residue. Machine in security conditions.

★★★★★ Excellent (E)

Machine is in excellent condition, comparable to a new one. Main components-with 70/80% of life residue. Machine in security conditions.